

Welcome,
This Web Conference
Will Begin Soon



PreventConnect

A Project of



CALCASA

Why is Sexual and Domestic Violence Prevention Central to Population Health?

1

PreventConnect
1215 K Street
Suite 1850
Sacramento CA
95814

Website: preventconnect.org

Email: info@preventconnect.org

Email Group:

preventconnect.org/email-group

eLearning: learn.preventconnect.org

Wiki: wiki.preventconnect.org



preventconnect.org/Facebook

preventconnect.org/Twitter

preventconnect.org/Flickr



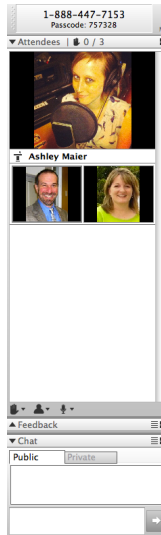
preventconnect.org/YouTube

preventconnect.org/LinkedIn

preventconnect.org/Pinterest



How to use this technology



- Raise hand
- Text chat & private chat
- PowerPoint slides
- Polling questions
- Phone
- Closed captioning
- Web conference guidelines

Please send a private chat message for help.

Call iLinc Technical Support at 800.799.4510.

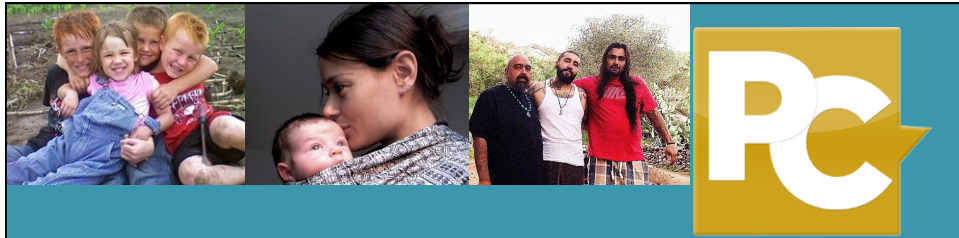
PreventConnect is a national project of the California Coalition Against Sexual Assault sponsored by U.S. Centers for Disease Control and Prevention. The views and information provided in this web conferences do not necessarily represent the official views of the U.S. government, CDC or CALCASA.



PreventConnect

- Domestic violence/intimate partner violence
- Sexual violence
- Violence across the lifespan
- Prevent before violence starts
- Connect to other forms of violence & oppression
- Connect to other prevention practitioners





Why is Sexual and Domestic Violence Prevention Central to Population Health?

June 4, 2015
11am-12:30pm PT; 2pm-3:30pm ET

Forum Objectives

- Identify at least one health issue relevant to their existing efforts
- Discuss challenges to a health approach within their work and potential solutions
- Utilize tools such as the *Collaboration Multiplier* to guide their collaboration process, increase efficiency, and expand impact
- List joint strategies ripe for partnership



About the Presenters



Lisa Fujie Parks, MPH
Program Manager
Prevention Institute



Annie Lyles, MSW
Program Manager
Prevention Institute



About the Webtechs



Casey Castaldi and Alexis Captanian
Prevention Institute



Text chat question

What is one take away from the first Peer Learning Forum (May 21)?

Or: what are you excited to explore today?

Prevention
and
equity | Institute
at the center of community well-being



Four Bridges

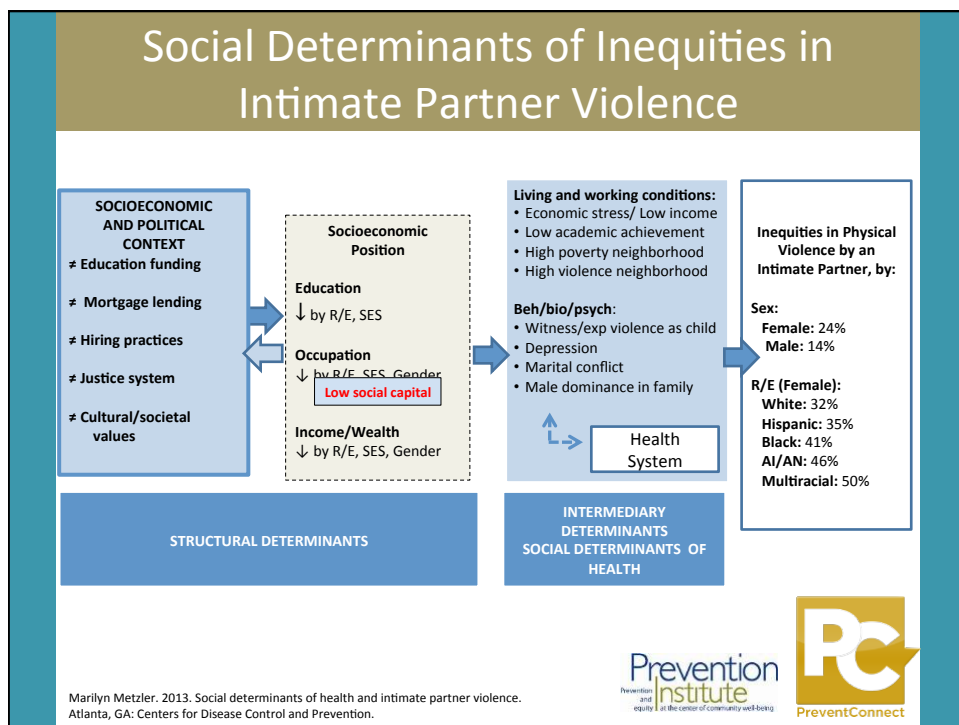
- Shared Risk & Protective Factors
- Social Determinants of Health
- Health Equity
- Joint Strategies and Outcomes

Prevention
and
equity | Institute
at the center of community well-being

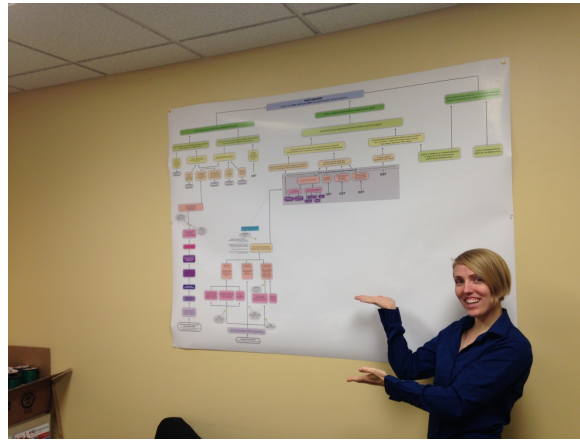


Connecting the Dots: An Overview of the Links Among Multiple Forms of Violence

A Centers for Disease Control and Prevention & Prevention Institute Publication



Indiana



Indiana Coalition Against Domestic Violence

Prevention
and
equity
institute
at the center of community well-being



Indiana



Indiana Coalition Against Domestic Violence

Prevention
and
equity
institute
at the center of community well-being



Health Equity

- Attainment of the highest level of health for all people
- Achieving HE requires valuing everyone equally with focused and ongoing societal efforts to address avoidable inequalities, historical and contemporary injustices, and the elimination of health and health care disparities

Source: A Practitioner's Guide for Advancing Health Equity

Prevention
and
equity | Institute
at the center of community well-being



Four Bridges

- Shared Risk & Protective Factors
- Social Determinants of Health
- Health Equity
- Joint Strategies and Outcomes
- Language and Framing is Key

Prevention
and
equity | Institute
at the center of community well-being



Addressing SV/DV as public health issues



Opportunities, challenges, solutions

Effective use of data

Concrete next steps



Linking sexual health and SV/IPV



<https://lipsticklifting.wordpress.com/2012/06/06/>

- A review of evaluations of 22 sex-education programs for adolescents and young adults found that 80% of sex education programs that explicitly addressed **gender and power in relationships** had lowered rates of pregnancy and STD's, compared to 17% of programs that did not.

<http://www.npr.org/sections/health-shots/2015/05/17/407063066/sex-ed-works-better-when-it-addresses-power-in-relationships>

Prevention
and
equity
Institute
at the center of community well-being



Linking sexual health and SV/IPV

“Knowing how to communicate and negotiate with sexual partners, and knowing how to distinguish between healthy and abusive sexual relationships, is as important as knowing how to put on a condom”

– Ralph DiClemente, Emory University

<http://www.npr.org/sections/health-shots/2015/05/17/407063066/sex-ed-works-better-when-it-addresses-power-in-relationships>

Prevention
and
Institute
equity | at the center of community well-being



Linking SV/DV to other public health issues:



Relevant public health issues

A health equity approach

Gender equity policies to address multiple gender inequalities in health?



equitable use of time

family

Gender equality policies

women's representation

income equality

equality in the labour market

https://www.youtube.com/watch?v=L98_NaNizGc&feature=youtu.be

Prevention Institute
Prevention and equity at the center of community well-being

PC
PreventConnect

Collaborating to Prevent Violence

- Cities with the greatest coordination across sectors had the **lowest rates of youth violence** (UNITY Assessment, 2008)

```
graph LR; Mayor[Mayor] --- Schools[Schools Superintendent]; Schools --- PH[Public Health Commissioner]; PH --- Police[Police Chief]
```

Mayor

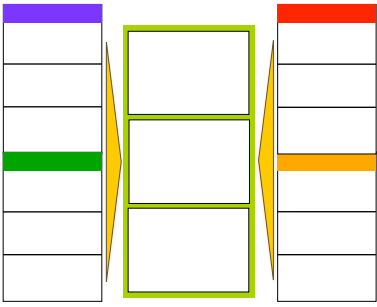
Schools Superintendent

Public Health Commissioner

Police Chief

Prevention Institute
Prevention and equity at the center of community well-being

PC
PreventConnect



Collaboration Multiplier

Prevention Prevention and equity at the center of community well-being institute
PC PreventConnect

“Every partner has a different “What’s in it for me?” that needs to be discovered. Collaboration Multiplier is a good tool because it stops to ask and answer these questions.”

— Sheila Savannah
Houston Health and
Human Services Department



Prevention Prevention and equity at the center of community well-being institute
PC PreventConnect

Collaboration Multiplier

Applications

- Delineates similarities, differences, collective resources
- Promotes understanding about diverse partners, and supports relationship- and trust-building
- Fosters shared vision, goals and language
- Identifies collective strengths and missing expertise
- Establishes joint outcomes and strategies
- Clarifies the contributions and roles of each partner

Prevention
and
equity
Institute
at the center of community well-being



Collaboration Multiplier

Two Phases

- **Information-Gathering.** Compile and share information. Learn more about your partners and their perspectives.
- **Analysis.** A facilitated conversation to discuss implications of Phase I, explore possible directions, agree on next steps

Prevention
and
equity
Institute
at the center of community well-being



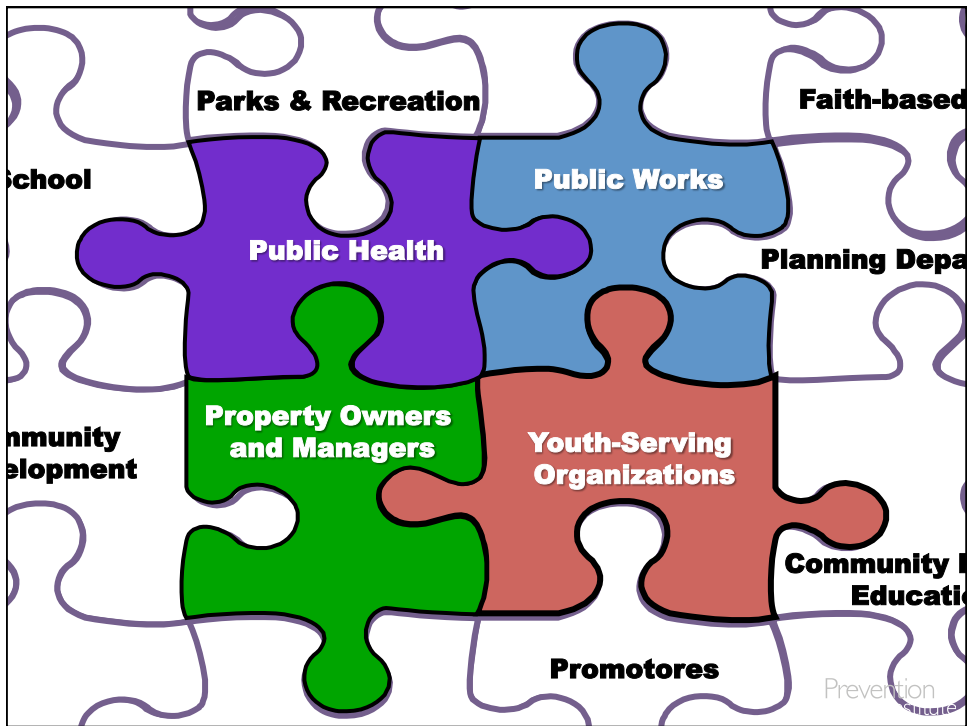
Houston Example



Martin Alcalá Jr., Houston Public Works and Engineering Department



Prevention
Institute
Prevention and equity at the center of community well-being



1

Information-Gathering Categories

- Importance of this issue
- Mandate
- Organizational goals
- Expertise, assets and strengths
- Strategies and activities
- Audience and partners
- Data
- Desired outcomes





1

Information-Gathering Data





1 **Information-Gathering Data**


Public Health	Property Owners	Public Works	Youth Groups
Statistics on causes and rates of death, mental health, injury from violence, and health behaviors.	Occupancy rates. Property value and cost of renovations. Knowledge of tenants, the neighborhood.	Number of 311 service requests, such as for dumping and flooding, by location. Number of volunteers.	Knowledge of young people and their concerns. Perceived safety around facilities.

1 **Information-Gathering Mandate**



Public Health	Property Owners	Public Works	Youth Groups
Prevent disease and injury. Create the conditions that promote health and wellness.	Maintain safe, habitable housing. Ensure the property is secure.	Design, construct, renovate and maintain public facilities and infrastructure.	Promote positive development and prepare children and youth to succeed in life.







Information-Gathering Mandate



Public Health	Property Owners	Public Works	Youth Groups
Coordinate efforts to prevent injuries and diseases.	Maintain property and increase curb appeal.	Clear ditches. Dispose of waste and recycling. Remove graffiti. Coordinate volunteers.	Develop and offer diverse programs for youth.





Information-Gathering Mandate

Public Health	Property Owners	Public Works	Youth Groups
Decreased injury, death and trauma from violence. Increased safety.	Increased property value.	Decreased litter and graffiti. Public ownership of spaces.	Improved school attendance.

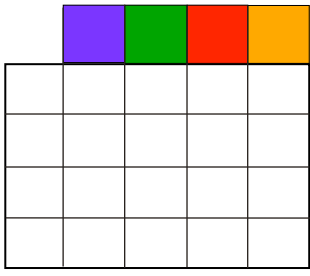



1 Information-Gathering Completed Grid

	Public Health	Property Owners	Public Works	Youth Groups
Mandate	====	====	====	====
Activities	====	====	====	====
Data	====	====	====	====
Desired Outcomes	====	====	====	====

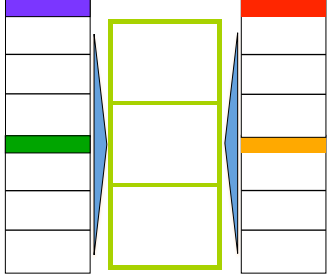





1 Information-Gathering

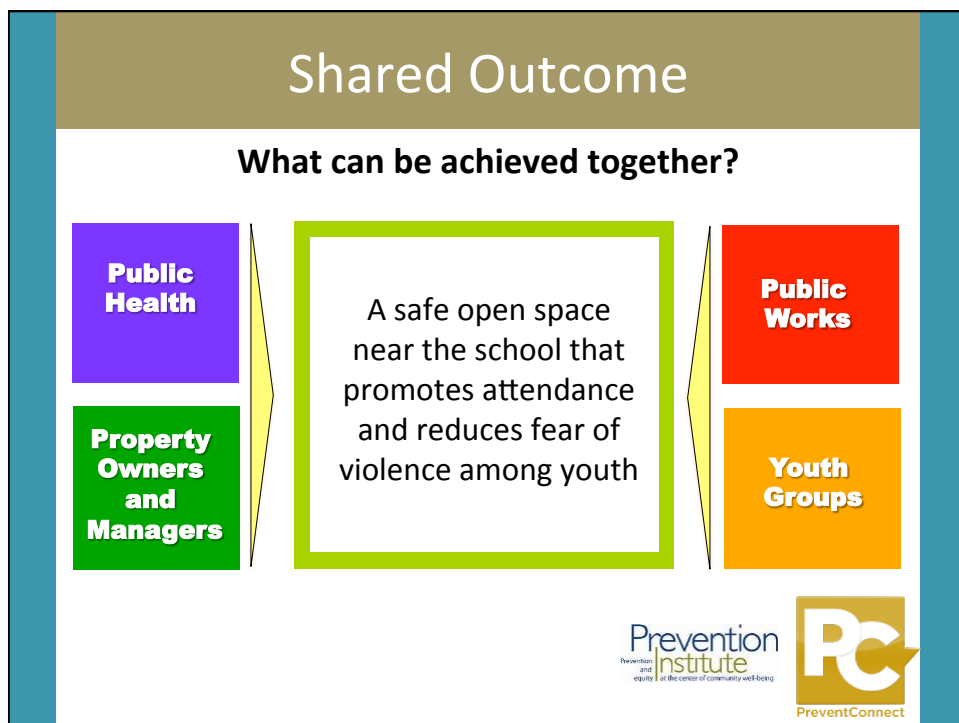
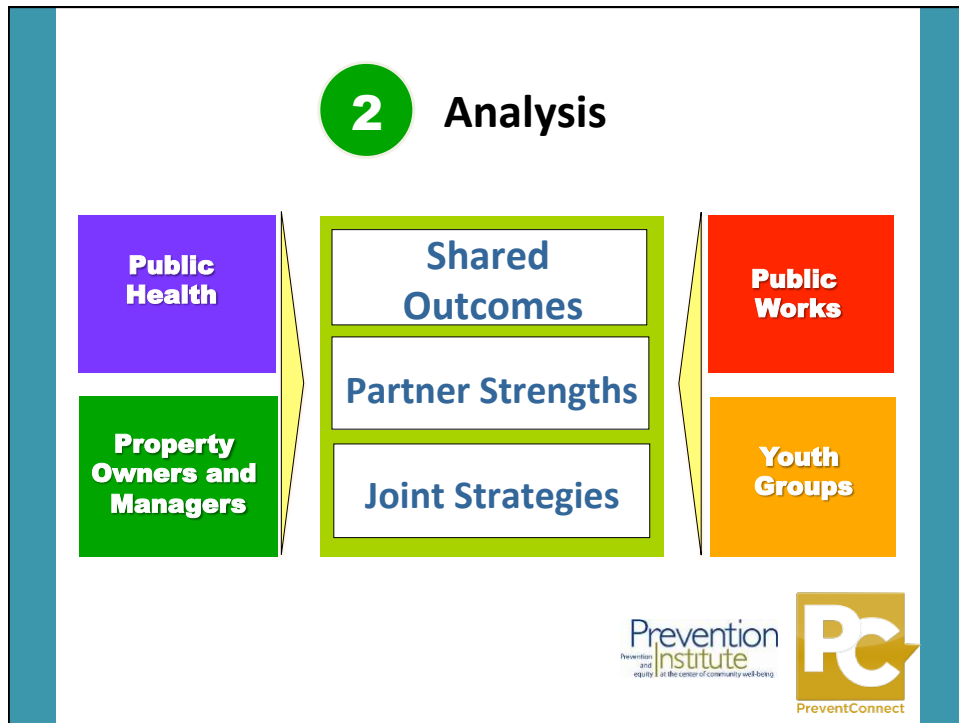


➔

2 Analysis





Collective Strengths

What partner strengths can the collaborative group utilize



Public Health

Property Owners and Managers

- Data sets that tell more when combined than separately
- Expertise to create an attractive, safe physical space
- Access to the property
- Staffing and volunteers

Public Works

Youth Groups

Joint Strategies

What strategies can two or more partners work on together?



Property Owners and Managers

Engage young people to conduct a survey of youth, and identify areas where they feel unsafe

Public Works






Joint Strategies

What strategies can two or more partners work on together?

Public Health



Engage tenants and civic organizations to maintain the land, and discourage illegal dumping and drug-dealing



Youth Groups



Joint Strategies

What strategies can two or more partners work on together?

Public Health



Utilize a shared use agreement to remove trash and clear toxins







Prevention
Institute
Prevention and equity at the center of community well-being



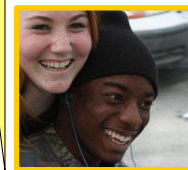
Martin Alcalá Jr., Houston Public Works and Engineering Department

Joint Strategies

What strategies can two or more partners work on together?

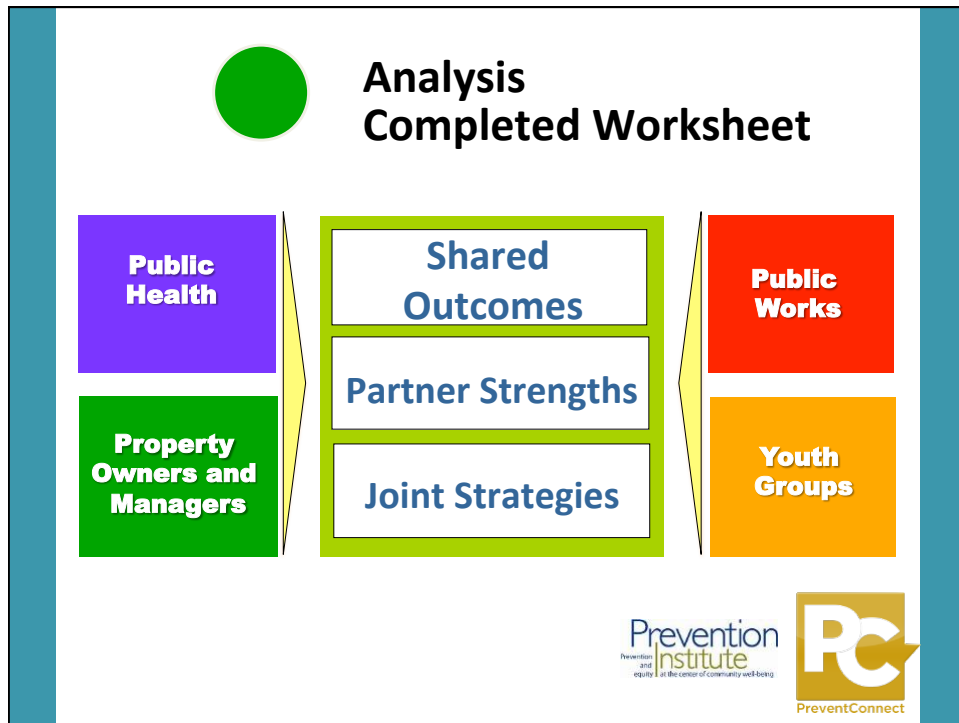


Make micro-grants and support young people in leading neighborhood clean-up projects and other community-based campaigns



Prevention
Institute
Prevention and equity at the center of community well-being





Homework – Collaboration Multiplier Information Gathering Grid

	Potential partner 1:	Potential partner 2:
Mandate		
Strategies/ Activities		
Data		
Desired Outcomes		
Expertise		
Funding Sources		
Other		

Prevention
and Institute
equity at the center of community well-being

www.preventioninstitute.org



221 Oak Street
Oakland, CA 94607
Tel: (510) 444-7738

Prevention Institute

Follow us on:

[Instagram](https://www.instagram.com/preventioninstitute) [Facebook](https://www.facebook.com/preventioninstitute) [Twitter](https://twitter.com/preventioninstitute)

annie@preventioninstitute.org