

Welcome,
This Web Conference
Will Begin Soon



Sexual Violence on Campus: Strategies for Prevention

CDC's Coordinated Effort to Sexual Violence Prevention on Campuses

PreventConnect
1215 K Street
Suite 1850
Sacramento CA
95814

Website: preventconnect.org

Email: info@preventconnect.org

Email Group:

preventconnect.org/email-group

eLearning: learn.preventconnect.org

Wiki: wiki.preventconnect.org



preventconnect.org/Facebook

preventconnect.org/Twitter

preventconnect.org/Flickr

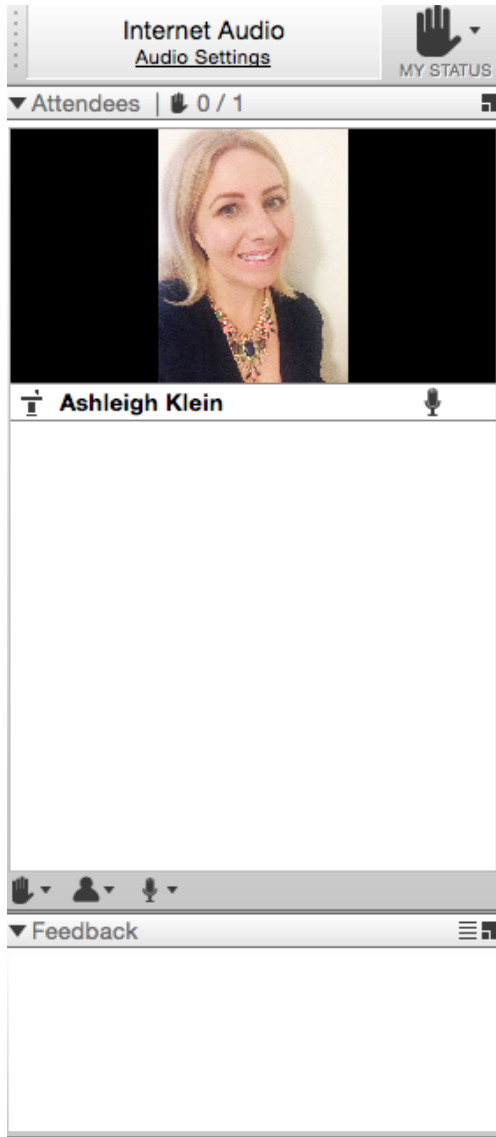
preventconnect.org/YouTube

preventconnect.org/LinkedIn

preventconnect.org/Pinterest



How to use this technology



- Raise hand
- Text chat & private chat
- Polling questions
- PowerPoint slides
- Phone
- Closed captioning
- Web conference guidelines

Please send a private chat message for help.

Call iLinc Technical Support at 800.799.4510.

PreventConnect is a national project of the California Coalition Against Sexual Assault sponsored by U.S. Centers for Disease Control and Prevention. The views and information provided in this web conferences do not necessarily represent the official views of the U.S. government, CDC or CALCASA.



PreventConnect

- Domestic violence/intimate partner violence
- Sexual violence
- Violence across the lifespan
- Prevent before violence starts
- Connect to other forms of violence & oppression
- Connect to other prevention practitioners
- Connect among campus communities



PreventConnect Campus

CAMPUS



Intentional • Strategic • Comprehensive



Past PreventConnect Campus Web Conferences

Wednesday, February 10, 2016

Comprehensive Prevention on Campus

Tuesday, March 22, 2016

Selecting the Right Online Module
for Interpersonal Violence Prevention

Tuesday, May 17

Partners in Prevention: Connecting Sexual Violence Prevention and
LGBTQ-Inclusive Campus Culture

Tuesday, June 7

Affirmative Consent Policies: Cultural Barriers and the Need for
Affirmative Sexuality

Wednesday, July 20

Community Colleges: Opportunities for
Sexual and Domestic Violence Prevention

Monday, September 19

Keeping the Climate Study Data and Other Reports Off-the-Shelf:
How to Use Data to Inform Sexual and Relationship Violence and
Stalking Prevention Strategies



PreventConnect Campus eLearning

- Online Module Selection through a Prevention Lens
- Comprehensive Prevention on Campus



The screenshot shows the PreventConnect Campus eLearning website. At the top, there is a navigation bar with the logo "Learn . PreventConnect" and the URL "Learn.PreventConnect.org". Below the navigation bar, there is a search bar and a dropdown menu for "Course categories: PreventConnect Campus". The main content area features a video player with the title "PreventConnect Introduces PreventConnect Campus" and a video thumbnail with the text "WELCOME TO PREVENTCONNECT CAMPUS". Below the video player, there is a paragraph of text: "Based on current research, experience and context, PreventConnect Campus addresses the prevention of sexual violence, domestic violence and dating violence on college and university campuses. PreventConnect Campus is part of PreventConnect, a national online community of prevention practitioners, and was developed as an online resource for practitioners working on campuses and community-based practitioners partnering with campuses. PreventConnect Campus offers a growing national community of campus prevention practitioners, web conferences, eLearning, podcasts and more." Below this text, there is a section titled "Online Module Selection through a Prevention Lens" with a description: "Welcome to Online Module through a Prevention Lens. This course is designed to build a solid foundation for selecting an online module. We hope that the principles we discuss can also build a strong foundation for selecting other types of prevention products, but we'll keep our focus on online modules. At the end of this course, we hope you will feel able to explain the current theory and research on online prevention, identify important factors and processes to consider when choosing an online module, and to apply theory to practical aspects of using the selection toolkit. More on the toolkit in a minute. At the end of this course, you will be able to:" followed by a bulleted list: "• Explain the current theory and research on online prevention", "• Identify important factors and processes to consider when choosing an online module", and "• Apply theory to practical aspects of using the selection toolkit". Below this section, there is another section titled "Comprehensive Prevention on Campus" with a description: "Welcome to Comprehensive Prevention on Campus".



PreventConnect Campus Resource Guide



<http://www.preventconnect.org/2016/01/preventconnect-campus-resource-guide-for-sexual-assault-prevention-on-college-campuses/>



CAMPUS

Intentional • Strategic • Comprehensive



PreventConnect

Sexual Violence on Campus: Strategies for Prevention

CDC's Coordinated Effort to Sexual Violence Prevention on Campuses

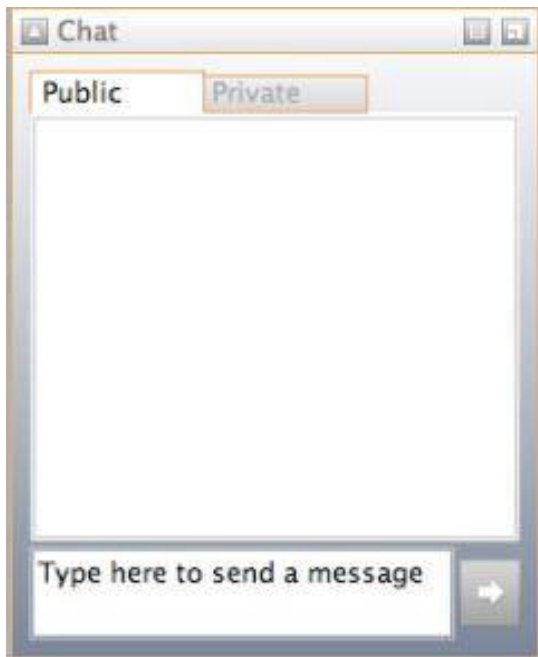
December 6, 2016

11am – 12:30 pm PT; 2pm – 3:30pm ET

PreventConnect is a National program of the California Coalition Against Sexual Assault sponsored by U.S. Centers for Disease Control and Prevention. The views and information provided in this web conference do not necessarily represent the official views of the U.S. government, CDC or CALCASA.

Text Chat Question

What specific role do you play in campus sexual violence prevention?



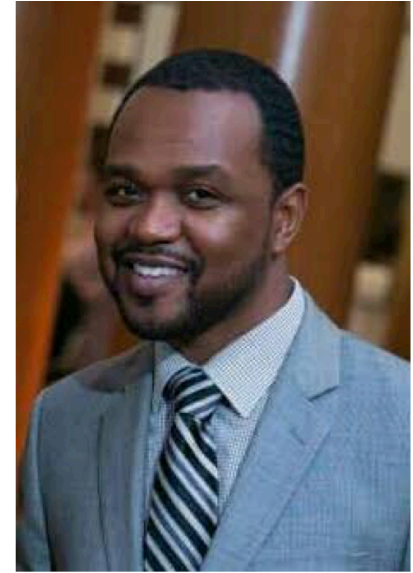
Guests



Dawn Fowler, PhD
National Center for Injury
Prevention and Control,
Centers for Disease
Control and Prevention



Jenny Dills, MPH
National Center for Injury
Prevention and Control,
Centers for Disease
Control and Prevention



Mighty Fine, MPH
American Public Health
Association



Learning Objectives

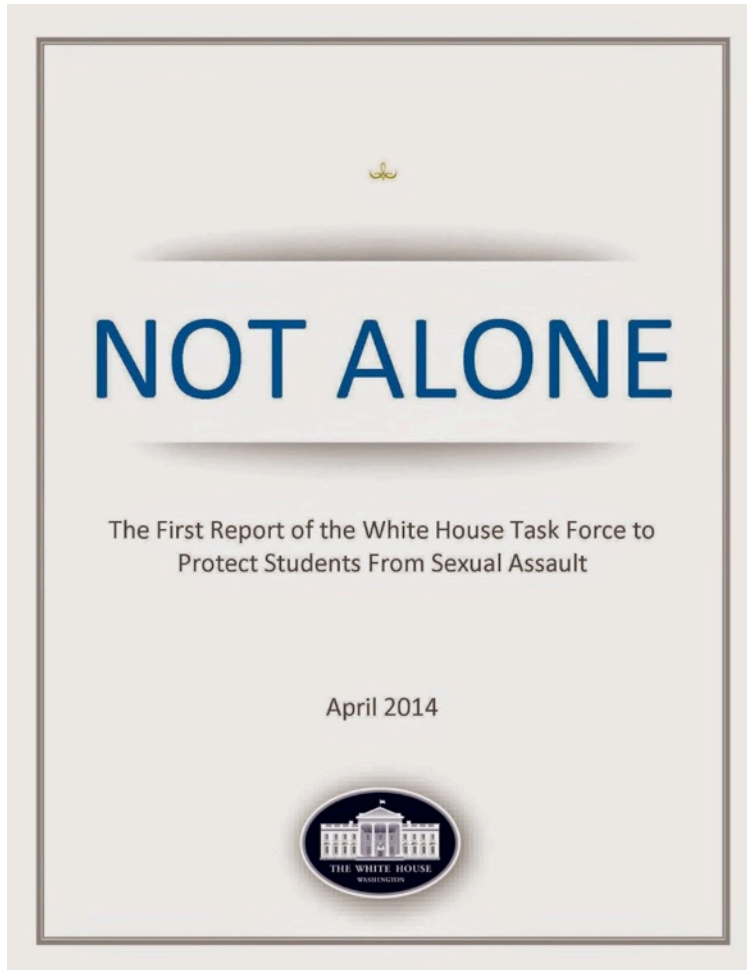
Overarching Purpose: to present CDC's Coordinated Sexual Violence Prevention Efforts

Key Objectives:

1. Describe the five components highlighted in CDC's technical assistance document
2. Identify evidence-informed strategies to prevent sexual violence on college and university campuses
3. Describe CDC's Action Planning Team process
4. Identify next steps for engaging in an action planning process



Task Force to Protect Students from Sexual Assault



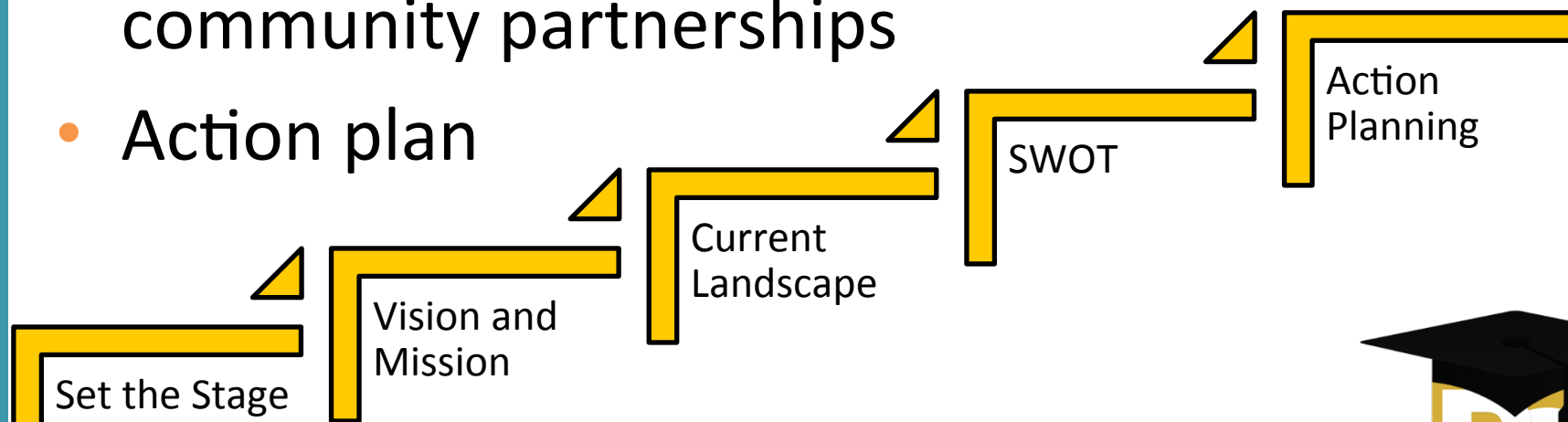
“In Fall 2014, the CDC, in collaboration with the Justice Department’s Office on Violence Against Women and the Department of Education, will convene a panel of experts to identify emerging, promising practices to prevent sexual assault on campus. CDC will then convene pilot teams to put the consensus recommendations into practice.”

<https://www.notalone.gov/assets/report.pdf>



Think Tank and Action Planning Meetings

- PreventConnect national scan of campus efforts
- Strategic brainstorming process of best practices
- Highlighting campus and community partnerships
- Action plan



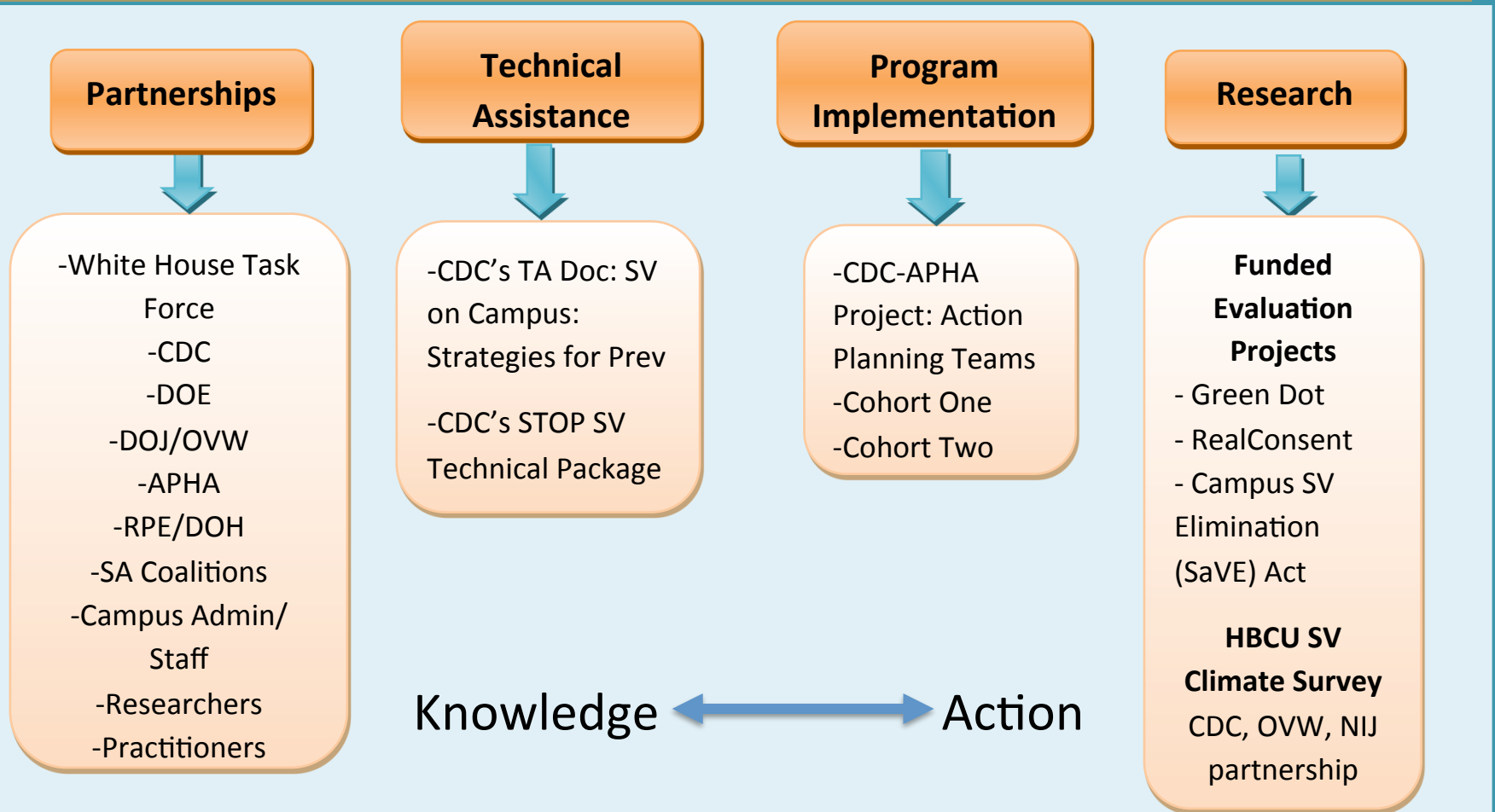
CDC's Coordinated Campus SV Prevention Efforts

- Partnerships
- Technical Assistance
- Program Implementation
- Research

Knowledge ↔ Action

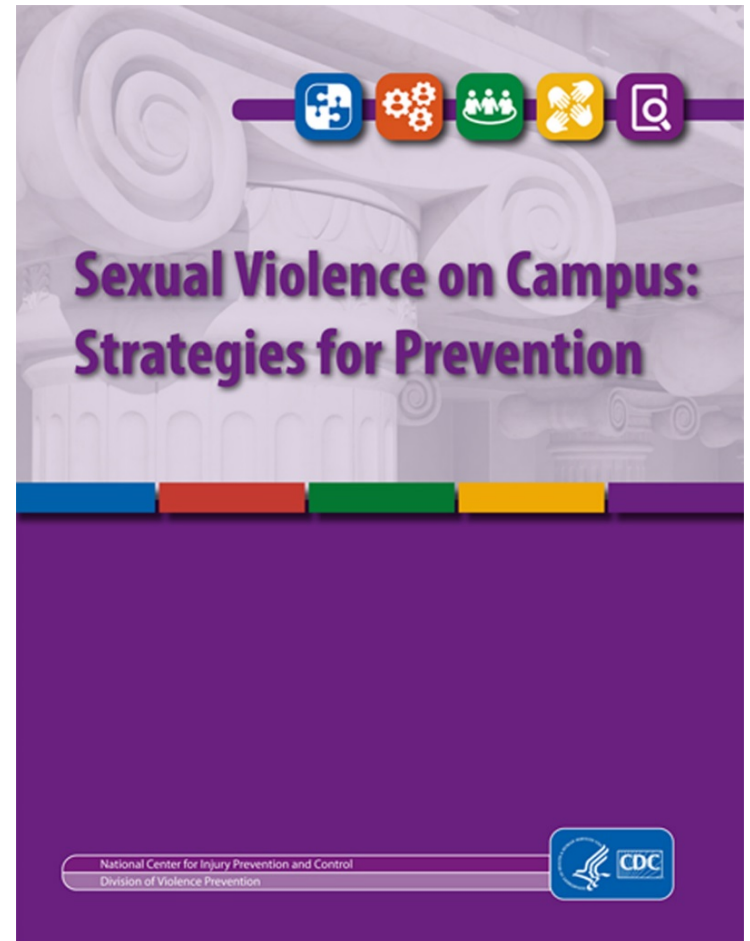


Sexual Violence Prevention on College and University Campuses: Examples of CDC Activities



Sexual Violence on Campus: Strategies for Prevention

- Combines the findings from the Think Tank and Action Planning Meetings with the best available evidence on sexual violence prevention.
- A starting place for sexual violence practitioners and their campus partners to begin planning for and implementing sexual violence prevention strategies in college or university settings.



<http://go.usa.gov/xkJ4f>



Audience Question

Have you read CDC's *Sexual Violence on Campus: Strategies for Prevention*?



Answer on the left

Feedback

0	Yes
0	No
0	No Answer



Prevention Framework



Comprehensive Prevention

- Implement prevention efforts across the social ecological model
- Incorporate principles of prevention
- Use data to make decisions
- Employ a multi-sector approach
- Coordinator efforts across prevention and response
- Partner with community organizations and rape crisis centers
- Work to address gender-based violence



Comprehensive Prevention

Individual

- Build bystander intervention and healthy relationship skills and establish positive norms about gender, sexuality, and violence with evidence-informed interactive, multi-session intervention for incoming students

Relationship

- Coach-implemented intervention for male athletes addressing hyper-masculine peer norms that support or facilitate sexual violence
- Dorm-based intervention that reinforces positive norms and skills relate to bystander behavior and healthy sexuality

Community

- Engage campus leadership to promote culture of safety and respect
- Social marketing campaign to address norms related to sexual violence, gender, sexuality
- Hot spot mapping to identify and monitor unsafe areas on campus.

Societal

- Community initiatives to implement/enforce alcohol policy
- Efforts to reduce excessive alcohol use or problem outlets
- Strengthen/support enforcement, response, and reporting policies on and off campus

Consistent messages across campus policies and programs



Infrastructure

- Use well trained staff
- Use standardized training
- Hire dedicated prevention staff
- Institutionalize prevention
- Create a team/workgroup/committee
- Foster relationships with referral services
- Incorporate violence prevention with other prevention programs
- Use a trauma-informed approach
- Work across all types of violence



Audience

- Identify champions
- Remember that the messenger matters
- Tailor prevention efforts to specific communities
- Plan for differences in types of institutions
- Engage parents as an audience
- Use proactive and social media
- Encourage active and visible bystanders



Partnerships and Sustainability

- Develop MOUs with community partners
- Ensure leadership buy-in
- Create permanent staff positions
- Engage students in planning and programming
- Partner with health services



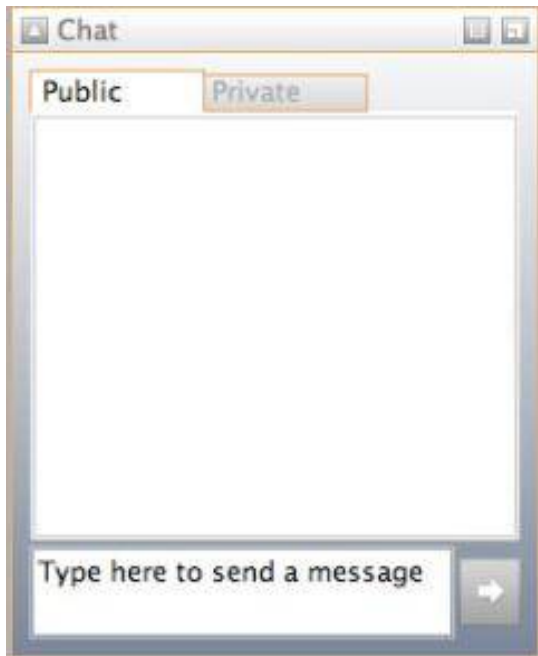
Evaluation

- Rigorously evaluate promising prevention programs, practices and policies
- Focus outcomes on reductions in perpetration
- Create capacity for evaluation
- Value participatory research
- Require logic models and theories of change

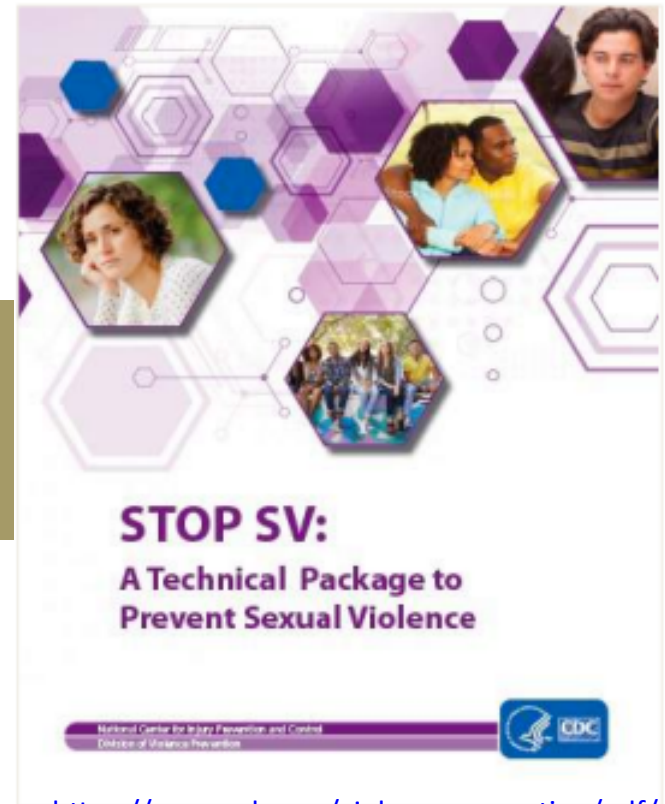


Text Chat Question

What components of the prevention framework are you most interested in?



What works to prevent sexual violence?



<https://www.cdc.gov/violenceprevention/pdf/sv-prevention-technical-package.pdf>



Audience Question

Are you familiar with *STOP SV: A Technical Package to Prevent Sexual Violence*?



Answer on the left

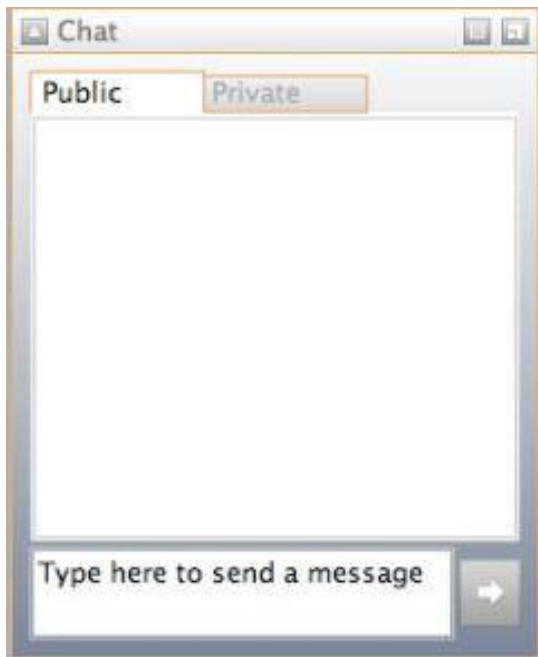
▼ Feedback 

<input type="checkbox"/>	Yes
<input type="checkbox"/>	No
<input type="checkbox"/>	No Answer



Text Chat Question

What plans do you have to use the technical package in your work?



STOP SV: A Technical Package to Prevent Sexual Violence

STOP SV		
	Strategy	Approach
S	Promote Social Norms that Protect Against Violence	<ul style="list-style-type: none"> • Bystander approaches • Mobilizing men and boys as allies
T	Teach Skills to Prevent Sexual Violence	<ul style="list-style-type: none"> • Social-emotional learning • Teaching healthy, safe dating and intimate relationship skills to adolescents • Promoting healthy sexuality • Empowerment-based training
O	Provide Opportunities to Empower and Support Girls and Women	<ul style="list-style-type: none"> • Strengthening economic supports for women and families • Strengthening leadership and opportunities for girls
P	Create Protective Environments	<ul style="list-style-type: none"> • Improving safety and monitoring in schools • Establishing and consistently applying workplace policies • Addressing community-level risks through environmental approaches
SV	Support Victims/Survivors to Lessen Harms	<ul style="list-style-type: none"> • Victim-centered services • Treatment for victims of SV • Treatment for at-risk children and families to prevent problem behavior including sex offending



Promote Social Norms that Protect Against Violence

- Bystander approaches
- Mobilizing men and boys as allies



Teach Skills to Prevent Sexual Violence

- Social-emotional learning approaches
- Teaching healthy, safe dating and intimate relationships
- Promoting healthy sexuality
- Empowerment-based training



Provide Opportunities to Empower and Support Girls and Women

- Strengthening economic supports for women and families
- Strengthening leadership and opportunities for adolescent girls



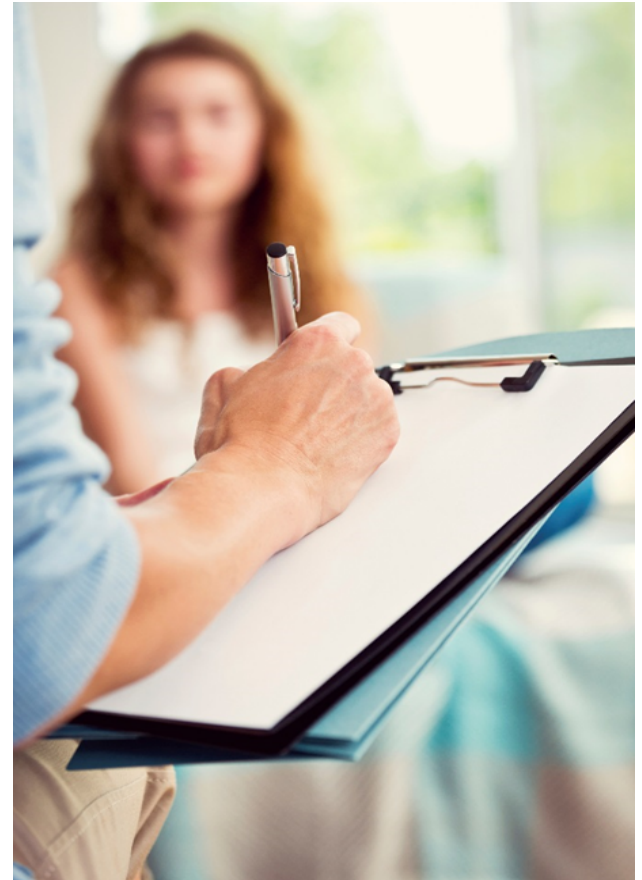
Create Protective Environments

- Improving safety and monitoring in schools
- Establishing and consistently applying workplace policies
- Addressing community-level risks through environmental approaches



Support Victims/Survivors to Lessen Harms

- Victim-centered services
- Treatment for victims of sexual violence
- Treatment for at-risk children and families to prevent problem behavior, including sexual offending



Action Planning



Cohort One: Developing a Mission Statement

Team Mission for Preventing Campus Sexual Violence

Mission Statement Criteria To Consider



Clear

What you
do and
why



Concise

Usually
one
sentence



Outcome Oriented

Goal of
team



Inclusive

Multiple
approaches

Invites
others to
join



Limiting

Define
scope

Team's Mission



Action Planning Activities

- Mini-Action Planning meetings
- Violence prevention summit
- Coalition development
- Classes on violence prevention
- Dissemination of information



Lessons Learned: Cohort One

- The necessity of educating high-level decision makers
- The critical role of campus climate surveys and other data-gathering efforts to inform program planning
- The need for each campus to take ownership of its prevention programming
- The value of student input (early on)
- The value of pooling resources
- Highlighting the importance of prevention



Upcoming Activities: Campus Sexual Assault Prevention

- Requests for Proposals
 - Existing Action Planning Teams (Cohort One):
 - Progress in current campus sexual violence prevention activities
 - Teams will track and monitor components from *Sexual Violence on Campus: Strategies for Prevention* (Technical Assistance doc)
 - Expand capacity to implement evidence-based/informed strategies
 - New 2017 Action Planning Teams (Cohort Two)



Upcoming PreventConnect Campus Web Conferences

Historically Black Colleges and Universities
(HBCU) Sexual Violence Climate Survey Project –
Early 2017



For more information please contact Centers for Disease Control and Prevention

1600 Clifton Road NE, Atlanta, GA 30333

Telephone: 1-800-CDC-INFO (232-4636)/TTY: 1-888-232-6348

Visit: www.cdc.gov | Contact CDC at: 1-800-CDC-INFO or www.cdc.gov/info.

The findings and conclusions in this report are those of the authors and do not necessarily represent the official position of the Centers for Disease Control and Prevention.



PreventConnect
1215 K Street
Suite 1850
Sacramento CA
95814

Website: preventconnect.org

Email: info@preventconnect.org

Email Group:

preventconnect.org/email-group

eLearning: learn.preventconnect.org

Wiki: wiki.preventconnect.org



preventconnect.org/Facebook

preventconnect.org/Twitter

preventconnect.org/Flickr

preventconnect.org/YouTube

preventconnect.org/LinkedIn

preventconnect.org/Pinterest

