

Welcome, this web conference will begin soon



NEW, SEASONED, OR NEEDING A REFRESHER

# **Key Concepts, Models, & Frameworks Within the Field of Sexual & Domestic Violence Prevention**

Thursday, January 30, 2020  
11AM PST | 2 PM EST

# Meet the PreventConnect Team



**Ashleigh Klein-Jimenez**

Project Manager  
she/her/hers



**Tori VandeLinde**

Project Coordinator  
she/her/hers



prevent  
connect

## **PreventConnect.org**

[info@PreventConnect.org](mailto:info@PreventConnect.org)

[PreventConnect.org/email](http://PreventConnect.org/email) – email group

[Learn.PreventConnect.org](http://Learn.PreventConnect.org) – eLearning

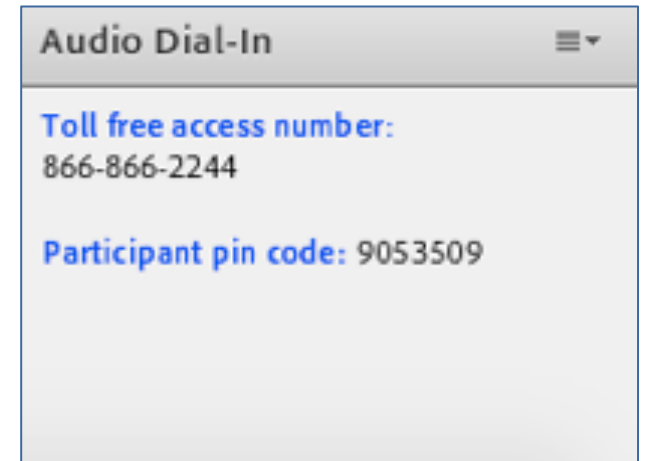
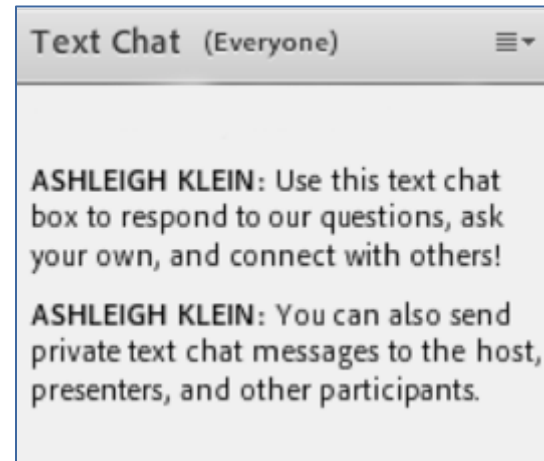
## **Follow Us**

[twitter.com/PreventConnect](https://twitter.com/PreventConnect)

[facebook.com/PreventConnect](https://facebook.com/PreventConnect)

# How to use Adobe Connect

- ▶ Text chat and private chat
  - ▶ Please send a private chat message for help.
- ▶ PowerPoint Slides
- ▶ Polling Questions
- ▶ Phone
- ▶ Closed Captioning
- ▶ Web Conference Guidelines



Contact Adobe Connect support at:

<https://helpx.adobe.com/adobe-connect/connect-support.html>



# PreventConnect

- ▶ Domestic violence/intimate partner violence
- ▶ Sexual violence
- ▶ Violence across the lifespan, including child sexual abuse
- ▶ Prevent before violence starts
- ▶ Connect to other forms of violence and oppression
- ▶ Connect to other prevention practitioners

# Past conferences/resources



<http://www.preventconnect.org/2019/01/from-foundations-to-conversations-and-innovations-applying-a-public-health-approach-to-preventing-sexual-and-domestic-violence/>



NEW, SEASONED, OR NEEDING A REFRESHER

# Key Concepts, Models, & Frameworks Within the Field of Sexual & Domestic Violence Prevention

Thursday, January 30, 2020  
11AM PST | 2 PM EST

PreventConnect is a national project of the California Coalition Against Sexual Assault sponsored by the U.S. Centers for Disease Control and Prevention. The views and information provided in this web conference do not necessarily represent the official views of the U.S. government, CDC or CALCASA.



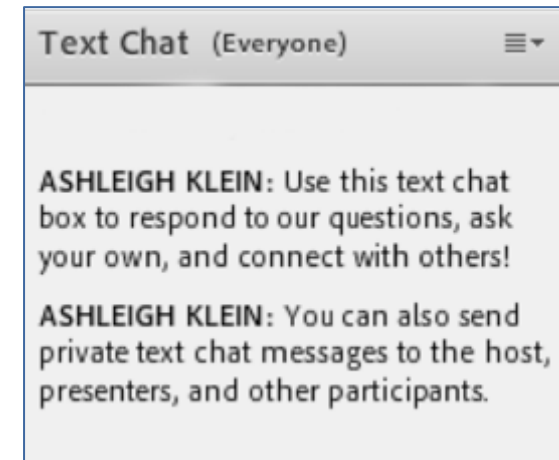
# Objectives

- ▶ Describe concepts, models, and frameworks that shape the current field of sexual and domestic violence prevention
- ▶ Identify resources for new prevention staff members to engage with in their first few months on the job
- ▶ Engage in a discussion on resources, support, and other knowledge sharing that would help new preventionists transition into their roles

How long have you  
been working in the  
sexual and domestic  
violence prevention  
field?

Text Chat Question

Use the Text Chat feature to  
answer the question.



# Meet Our Collaborative Partner



**Mo Lewis**

Prevention Specialist, National Sexual Violence  
Resource Center  
they/them she/her

What can be done to prevent the  
problem from occurring



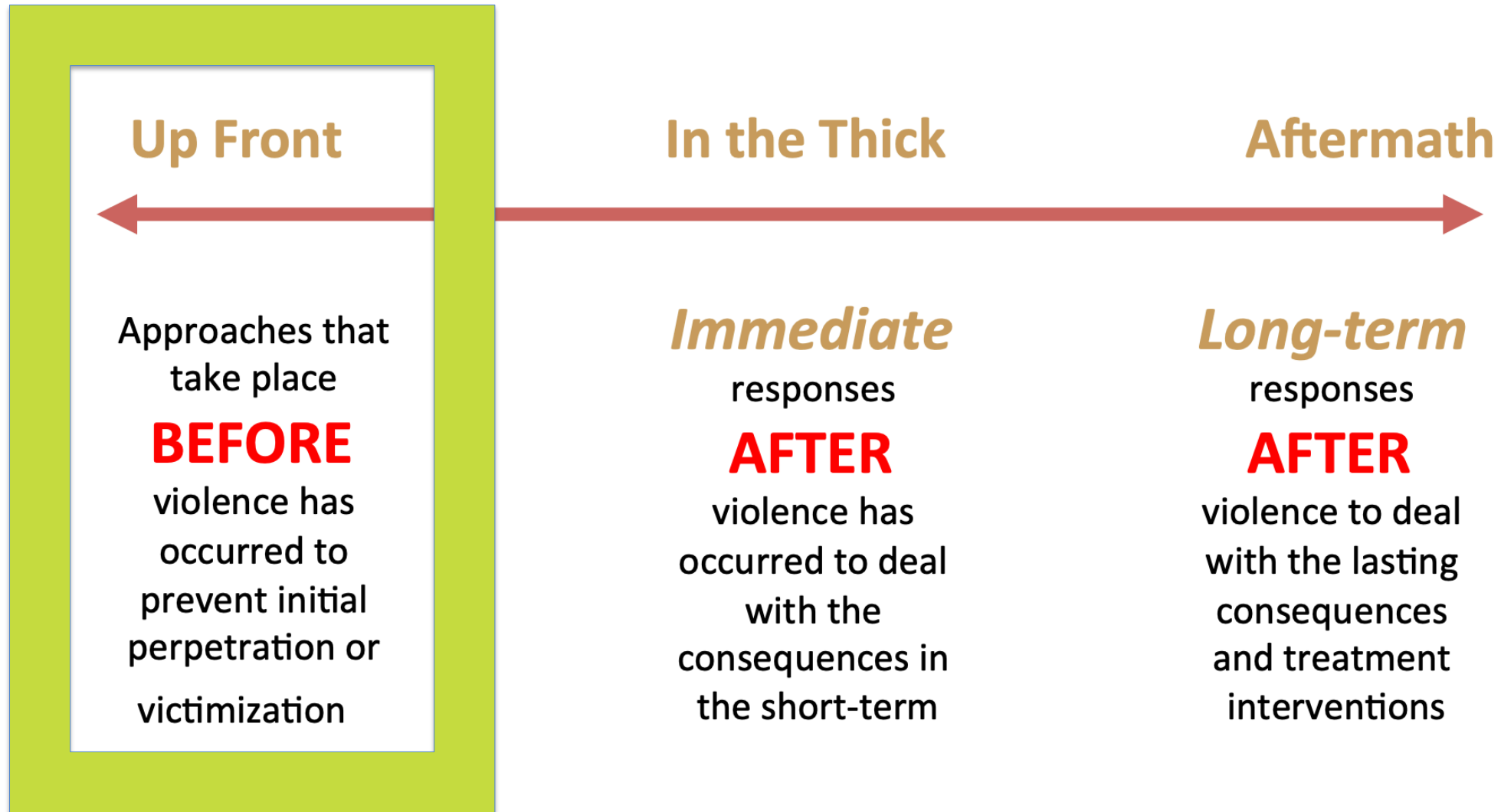
in the first place?

# The Prevention Continuum





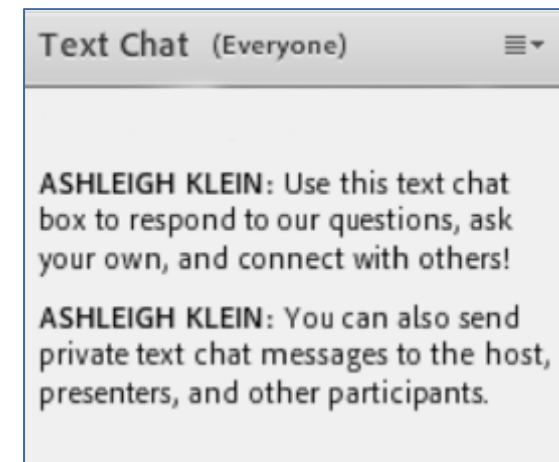
# The Prevention Continuum



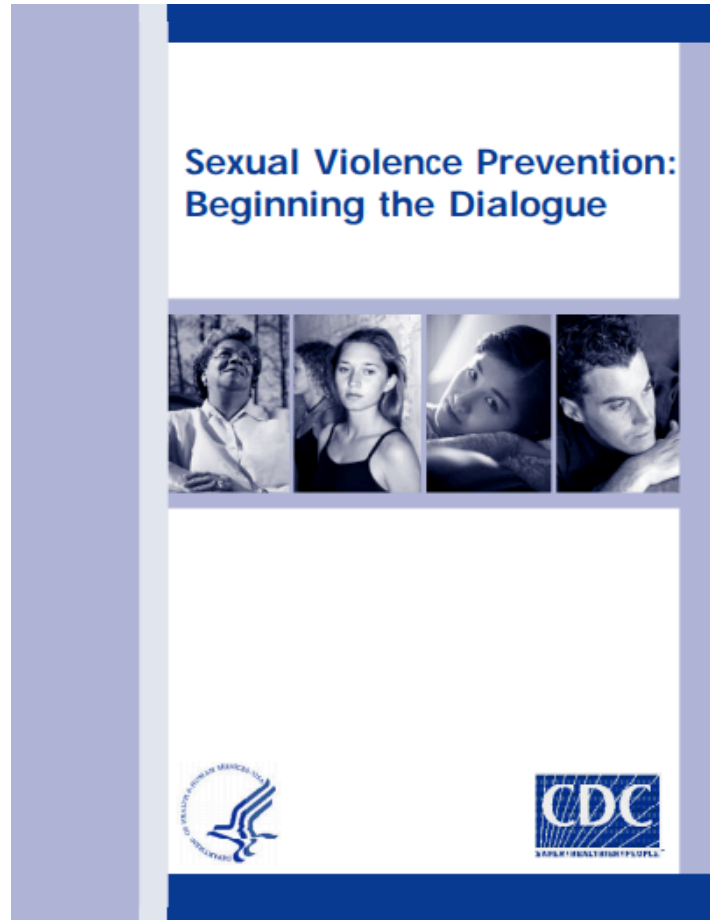
Where does your prevention work fall on the continuum? What activities are you doing?

Text Chat Question

Use the Text Chat feature to answer the question.



# We know more about sexual violence



<https://www.-cdc.gov/violenceprevention/pdf/svprevention-a.pdf>

## Continuing the Dialogue:

Learning from the Past  
and Looking to the Future of  
Intimate Partner Violence  
and Sexual Violence  
Prevention



National Center for Injury Prevention and Control  
Division of Violence Prevention



<https://www.cdc.gov/violenceprevention/pdf/sv/Continuing-The-Dialogue-508.pdf>

“It is unreasonable to expect that people will change their behavior easily when so many forces in the social, cultural, and physical environment conspire against such change.”

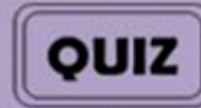
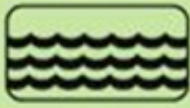
Institute of Medicine

# Primary Prevention

- ▶ a systematic process that promotes healthy environments and behaviors and reduces the likelihood of an incident, condition, or injury before it occurs in the first place.

# Primary Prevention Tools and Frameworks

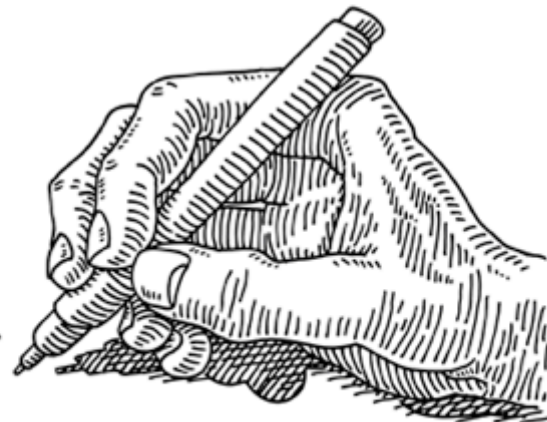
- ▶ **Moving Upstream Story**
- ▶ **Public Health Model**
- ▶ **9 Principles of Effective Prevention Programs**
- ▶ **Social Ecological Model**
- ▶ **Spectrum of Prevention**

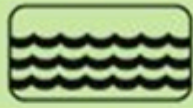


# Primary Prevention Primer!

...an interactive way to familiarize yourself with primary prevention.

*Brought to you by NSVRC*



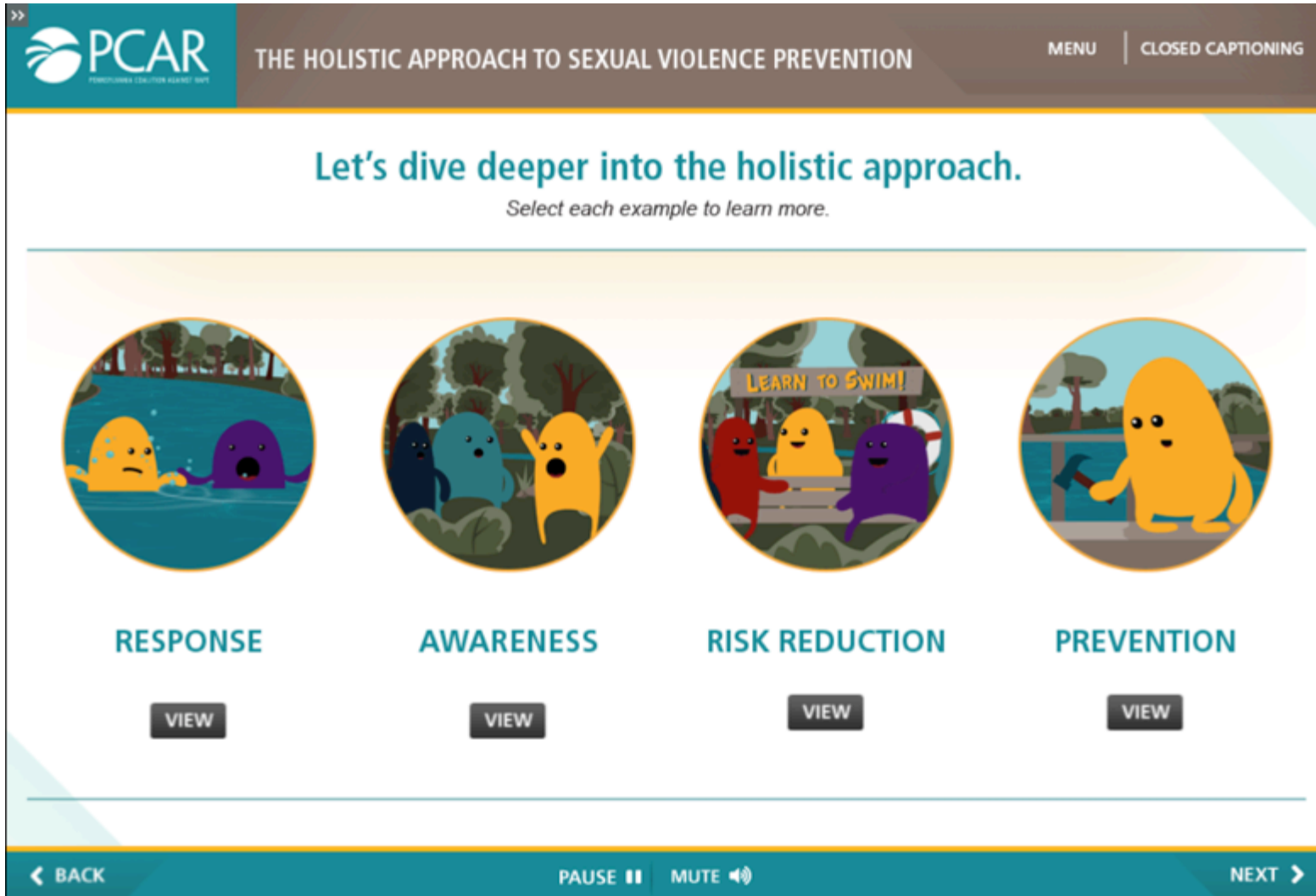


**QUIZ**

# Moving Upstream story

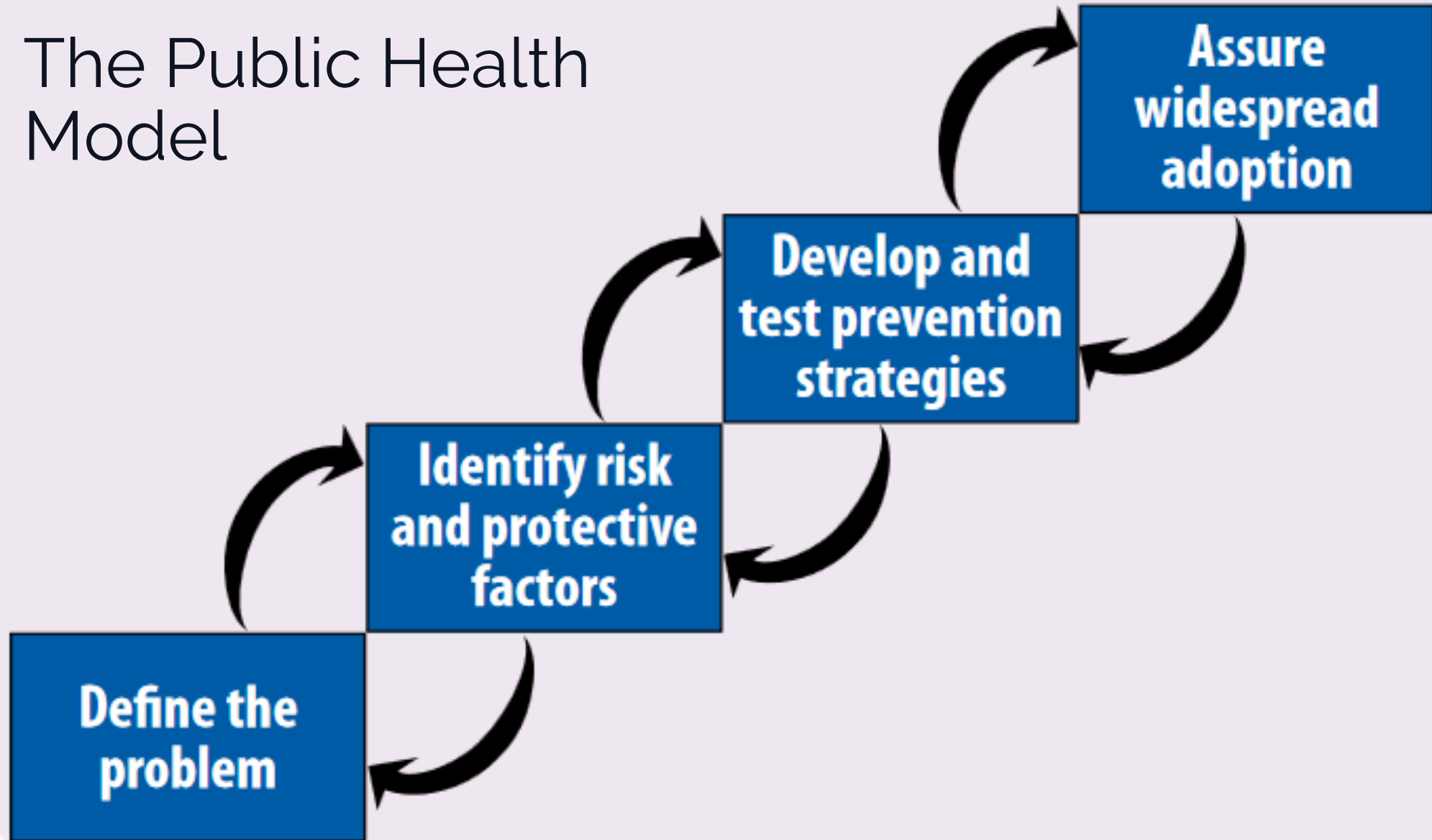


# Other versions of the Moving Upstream Story



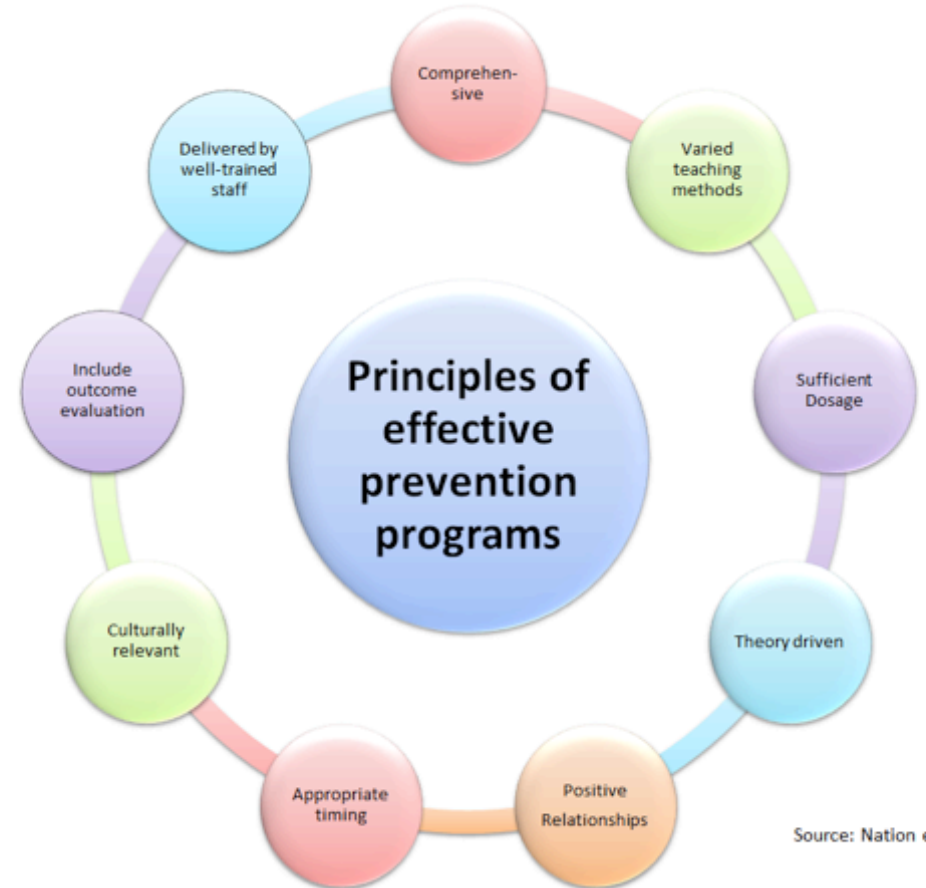
<https://campus.nsvrc.org/course/view.php?id=118#section-1>

# The Public Health Model



# Principles of Effective Prevention Programs

- ▶ Comprehensive
- ▶ Varied teaching methods
- ▶ Sufficient dosage
- ▶ Theory driven
- ▶ Positive relationships
- ▶ Appropriate timing
- ▶ Culturally relevant
- ▶ Include outcome evaluation
- ▶ Delivered by well-trained staff



Source: Naton et al., 2003

Nation et al., 2003

# Spectrum of Prevention

**Influencing Policy & Legislation**

**Changing Organizational Practices**

**Fostering Coalitions & Networks**

**Educating Providers**

**Promoting Community Education**

**Strengthening Individual Knowledge & Skills**



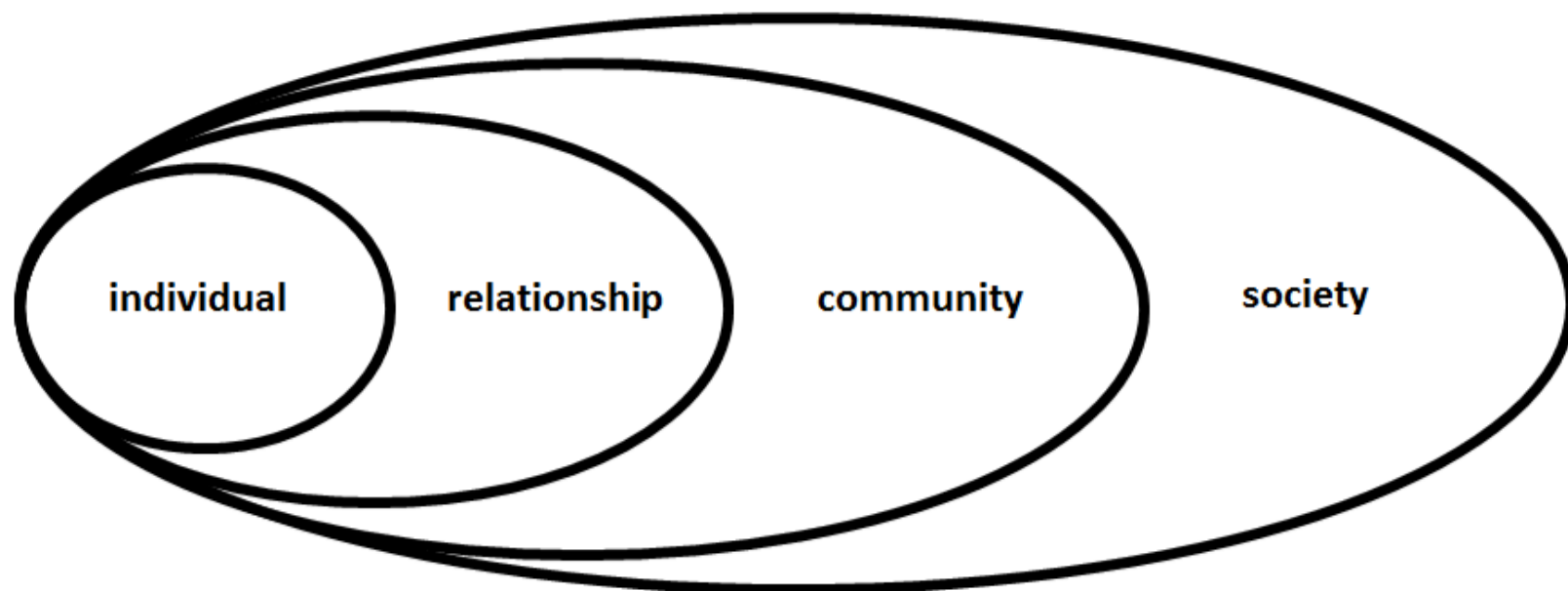
# The synergy of the Spectrum of Prevention



RR/PP

QUIZ

## Social Ecological Model

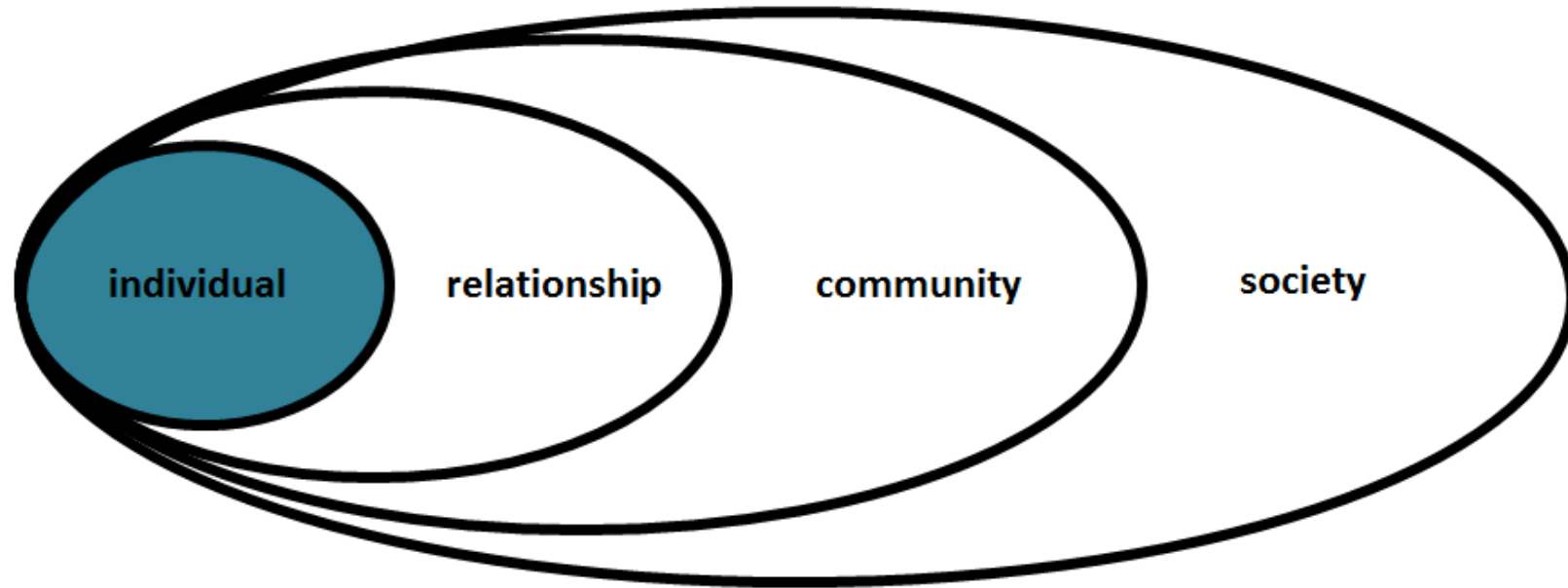


A way to look at a comprehensive prevention approach for many different health issues.



RR/PP

QUIZ

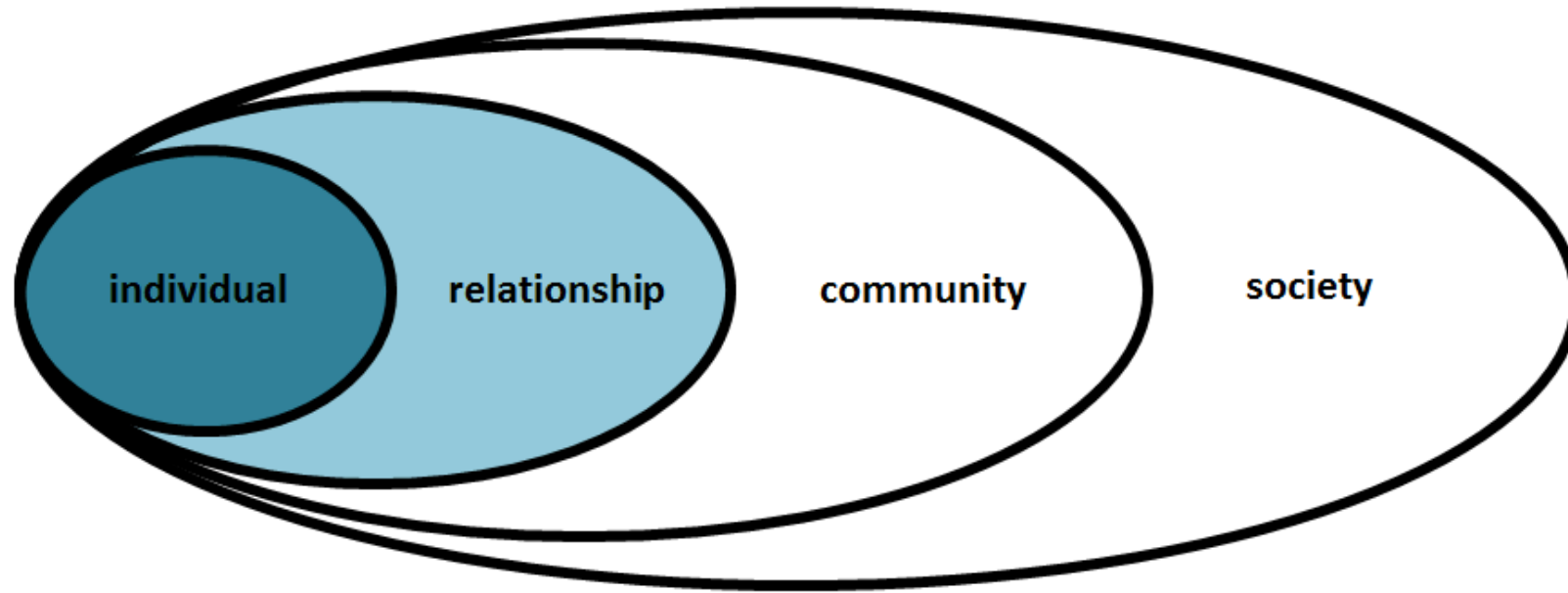


A person's attitudes, values, and beliefs



RR/PP

QUIZ



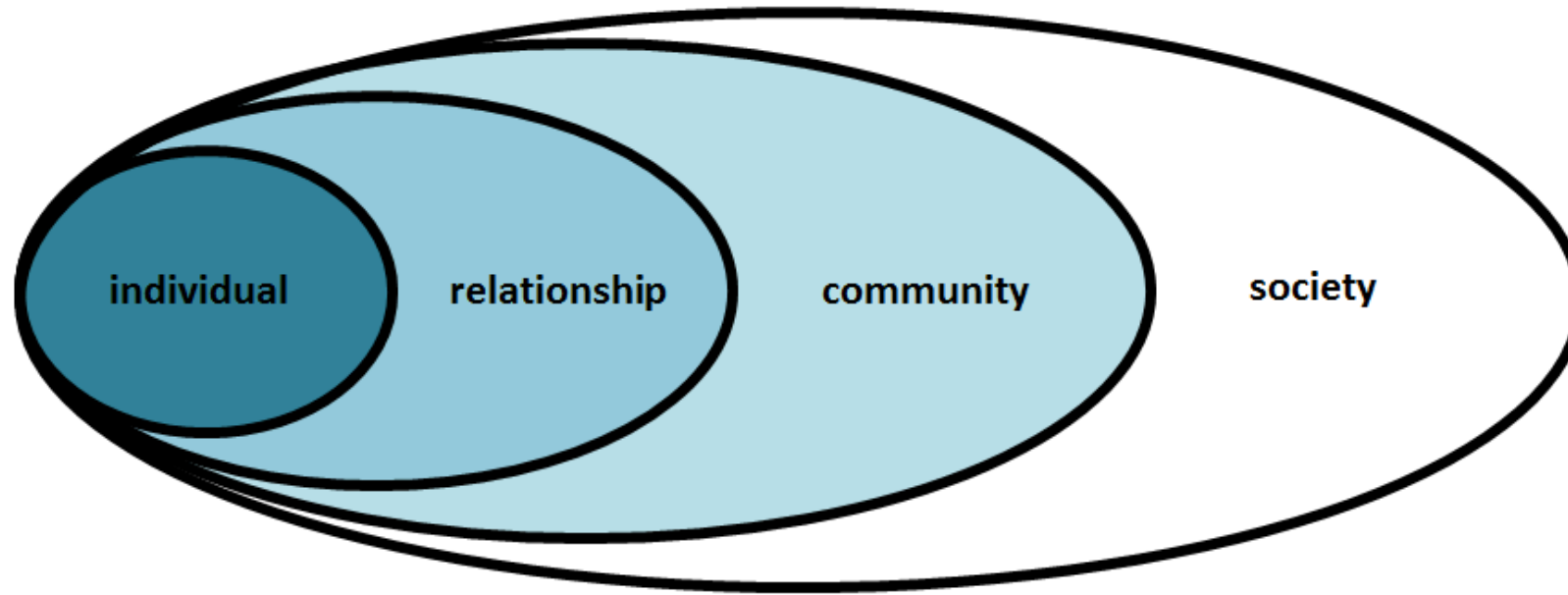
Relationships with family members, partners, and friends





RR/PP

QUIZ

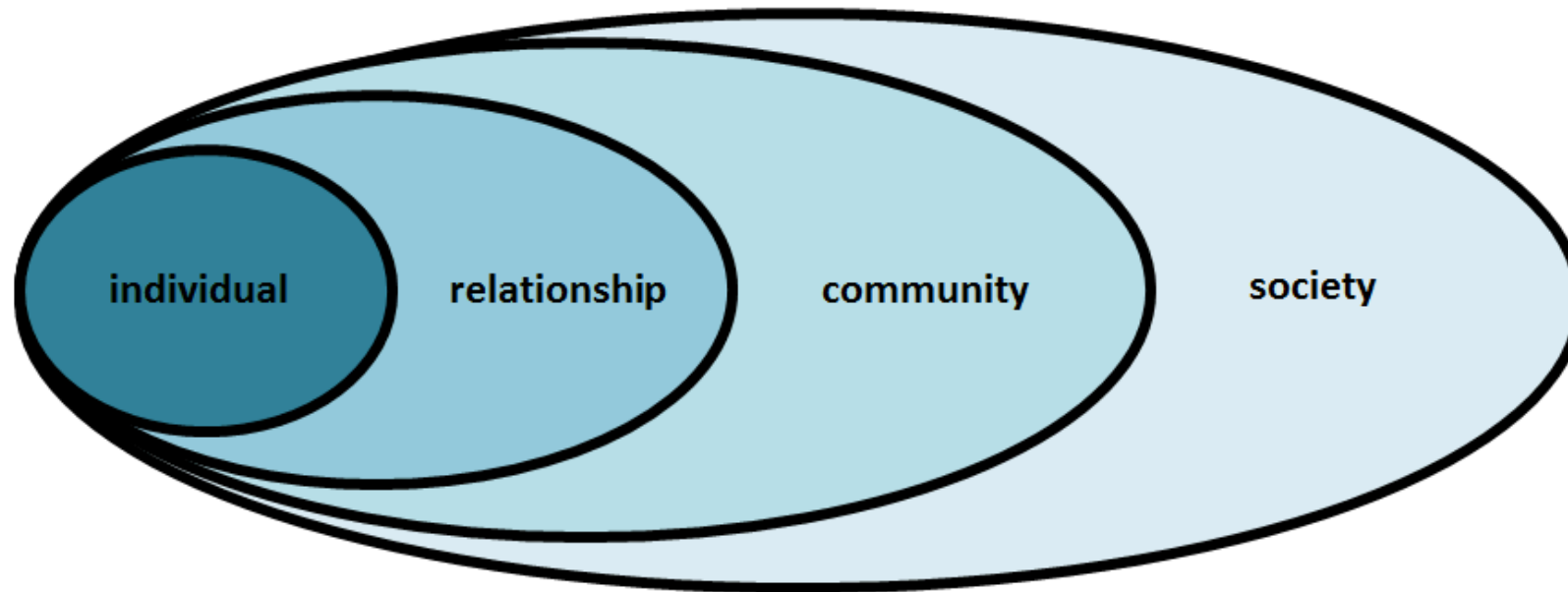


Neighborhoods, schools, faith communities,  
and local organizations



RR/PP

QUIZ



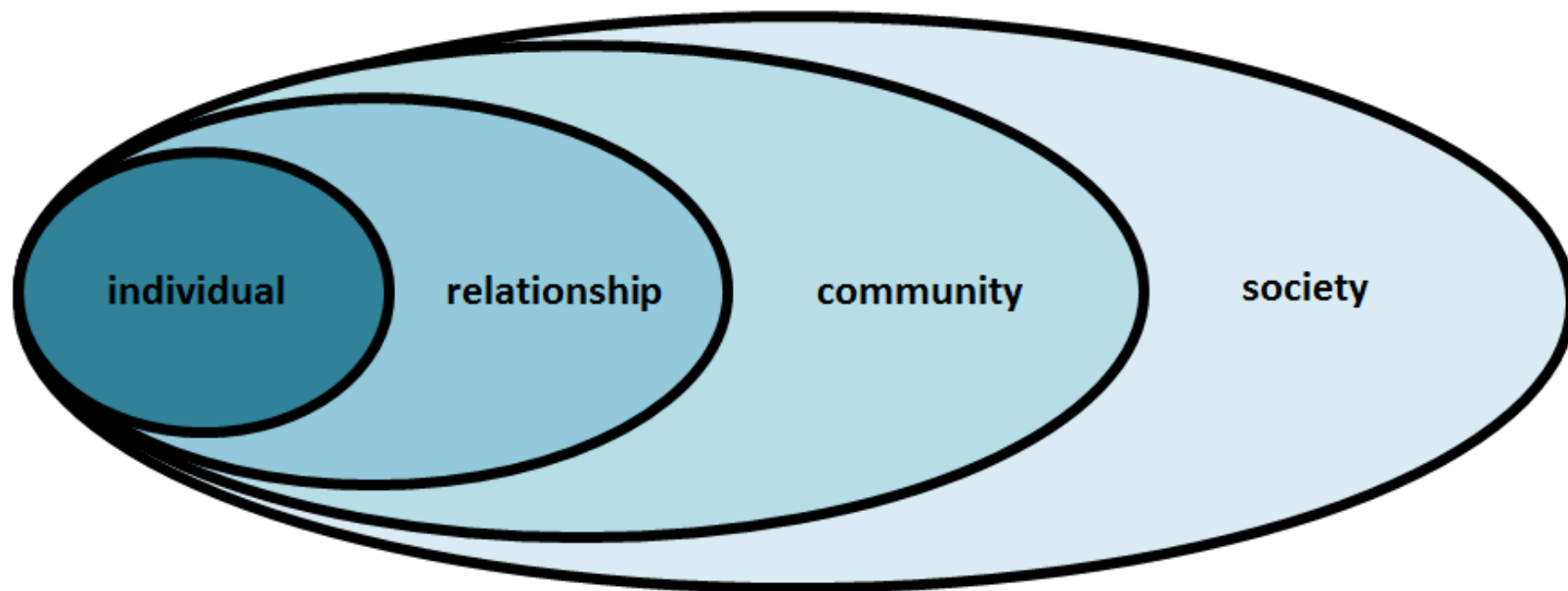
Laws, systems, the media, and widespread  
social norms



RR/PP

QUIZ

Where we interact with each other



Where we can influence change

**Effective prevention efforts focus on multiple levels.**

## Community-specific:

Specific to a community's needs, interests, strengths, cultural norms, experiences, etc.

## Community-level:

Impacts the entire community, regardless of whether they are part of the prevention group or efforts. Targets characteristics of a community.

## Community-specific:

Specific to a community's needs, interests, strengths, cultural norms, experiences, etc.

**Our prevention work should always be community-specific!**

## Community-level:

Impacts the entire community, regardless of whether they are part of the prevention group or efforts. Targets characteristics of a community.

**Our goal is to stretch to the community level**

## Program Example:

- High-School prevention program
  - Weekly social justice group
  - Peer mentorship program
  - Staff buy-in, helps mentor and support groups

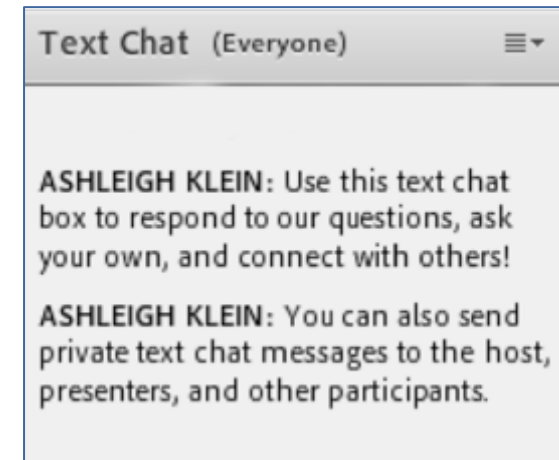
Individual	Relationship	Community	Society
Students confront their own beliefs about gender stereotypes and victim blaming attitudes	Students lead workshops for parents on how to increase positive communication about sex and relationships	The students in the social justice group work with the staff and faculty to pass a Student Bill of Rights	The group works with the state coalition to promote a bill requiring comprehensive sexual health education in high schools

Individual	Relationship	Community	Society
<ul style="list-style-type: none"> <li>• Attitudes</li> <li>• Values</li> <li>• Beliefs</li> <li>• Behaviors</li> </ul>	<ul style="list-style-type: none"> <li>• Communication skills</li> <li>• Relationship skills</li> <li>• Respecting boundaries</li> </ul>	<ul style="list-style-type: none"> <li>• Policies and Procedures</li> <li>• Codes of Conduct</li> <li>• Bills of Rights</li> </ul>	<ul style="list-style-type: none"> <li>• Laws</li> <li>• Policies</li> <li>• Widespread Media</li> <li>• Cultural norms</li> </ul>

What level(s) of the SEM are you already reaching? What levels can you add?

Text Chat Question

Use the Text Chat feature to answer the question.





# Norms

more than a habit

sanction behavior

based in  
culture & tradition

taken for granted

behavior shapers

attitudes,  
beliefs,  
ways of being

communicate regularity  
in behavior

# 5 Key Norms

- ▶ Culture of Violence
- ▶ Narrow Definitions of Masculinity
- ▶ Limited Roles for Women
- ▶ Power and Control
- ▶ Privacy and Silence



# Culture of Violence





# Narrow Definitions of Masculinity

## Toxic masculinity is under attack. That's fine.

New guidelines for therapists who treat men, the Gillette ad, and backlash.

By Thomas Page McBee | Jan 22, 2019, 11:20am EST

f   SHARE



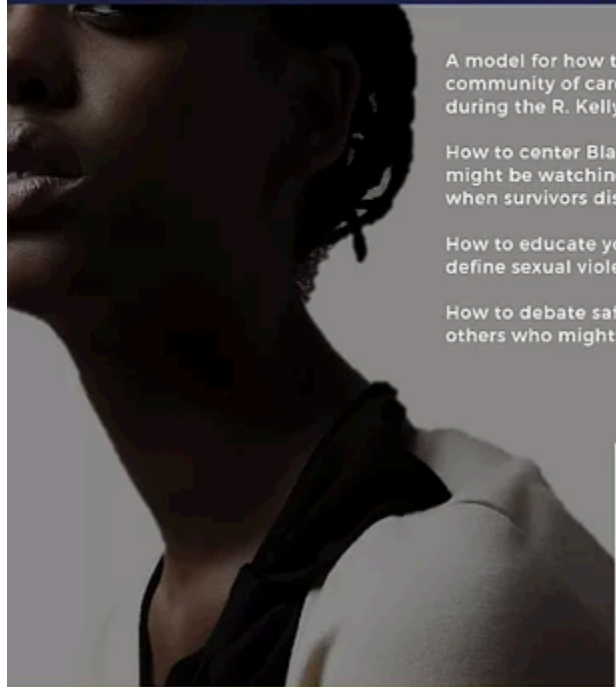
# Limited Roles for Women



First African-American, all women flight crew

# Power and Control

## Black Women's Blueprint




A model for how to create a community of care for survivors during the R. Kelly screening.

How to center Black girls who might be watching and respond when survivors disclose.

How to educate your family and define sexual violence.

How to debate safely with others who might be watching.



## BEYOND LIGHTS, CAMERA, ACTION & SURVIVING R. KELLY VIEWING PARTIES

A FIRST OF MANY GUIDES FOR ADDRESSING SEXUAL VIOLENCE IN BLACK COMMUNITIES



**TUNE IN**  
**Surviving R. Kelly**  
airs on Lifetime on  
January 3-5 at 9/8c

Note: This document is just a place to start; we recognize that there is much more work to be done and we invite collaboration and inquiries from those who are interested in partnering with us to do so via [media@ggenyo.org](mailto:media@ggenyo.org).

## Surviving R. Kelly Viewer Guide

In Lifetime's groundbreaking documentary series *Surviving R. Kelly*, women are emerging from the shadows and uniting their voices to share their stories for what will surely be one of the most talked about television events of the year. The six-part series is an urgent call to families, communities and all those who touch the lives of young people, as well as to fans and the entertainment industry alike, reminding us all that we must work harder to protect girls and women.

Celebrated as one of the greatest R&B artists of all time, R. Kelly's genre-defining career has been riddled with rumors of abuse, predatory behavior, and pedophilia. Yet, for nearly three decades, the "I Believe I Can Fly" singer's history of allegedly abusing underage African American girls has been largely ignored by mainstream media.

*Surviving R. Kelly* has the potential to change that.

For the first time ever, survivors and people from Kelly's inner circle are coming forward with new allegations of sexual, mental, and physical abuse at his hands. With over 50 interviews (including civil rights activist **Tarana Burke**, musicians **John Legend** and **Sparkle**, talk-show host and former DJ **Wendy Williams**, journalist **Toure** and ex-wife **Andrea Kelly**), this docuseries will finally shed light on a secret life the public has never seen.

*The Surviving R. Kelly Viewer's Guide was designed to help audiences process and discuss the themes discussed in this powerful production and identify ways to stand with survivors, while also providing resources for those who may need support. Please share it with your networks and join the conversation on Twitter before, during and after you watch using the #SurvivingRKelly hashtag.*

—**Joanne N. Smith**  
Founder and President, Girls for Gender Equity

 **#SurvivingRKelly**

Surviving R. Kelly Viewer Guide

#SurvivingRKelly





# Privacy and Silence

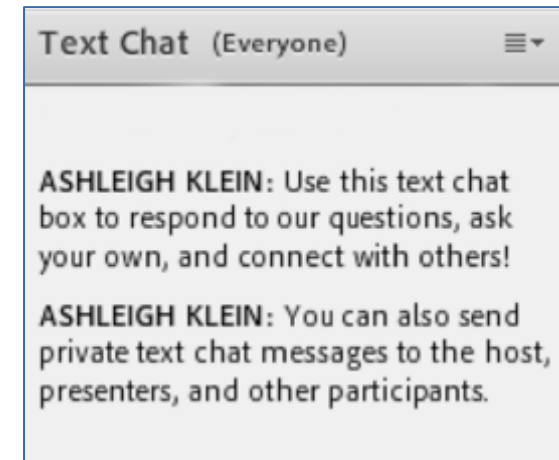


**Where  
do we  
go from  
here?**

# What norms are you trying to change?

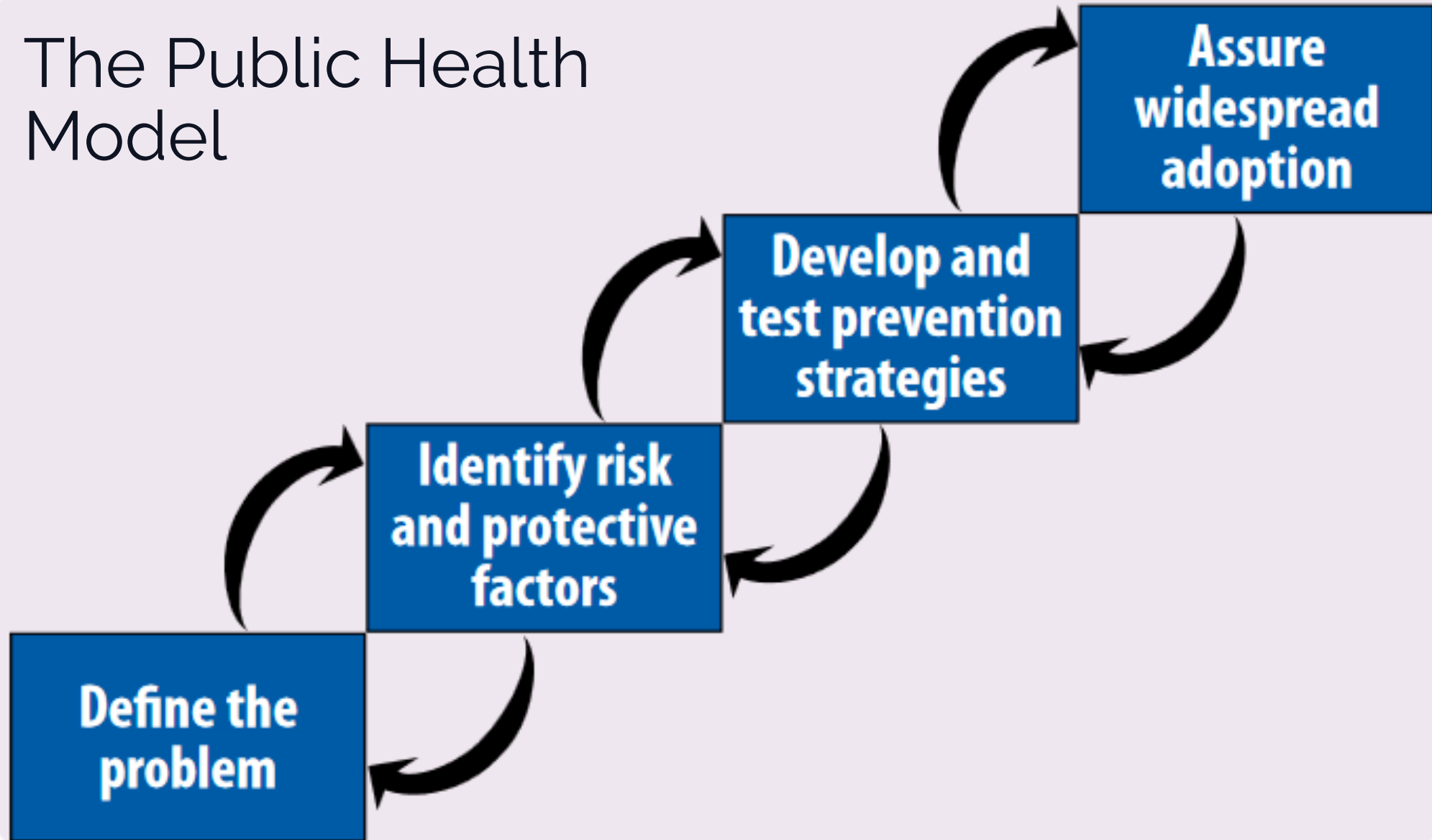
## Text Chat Question

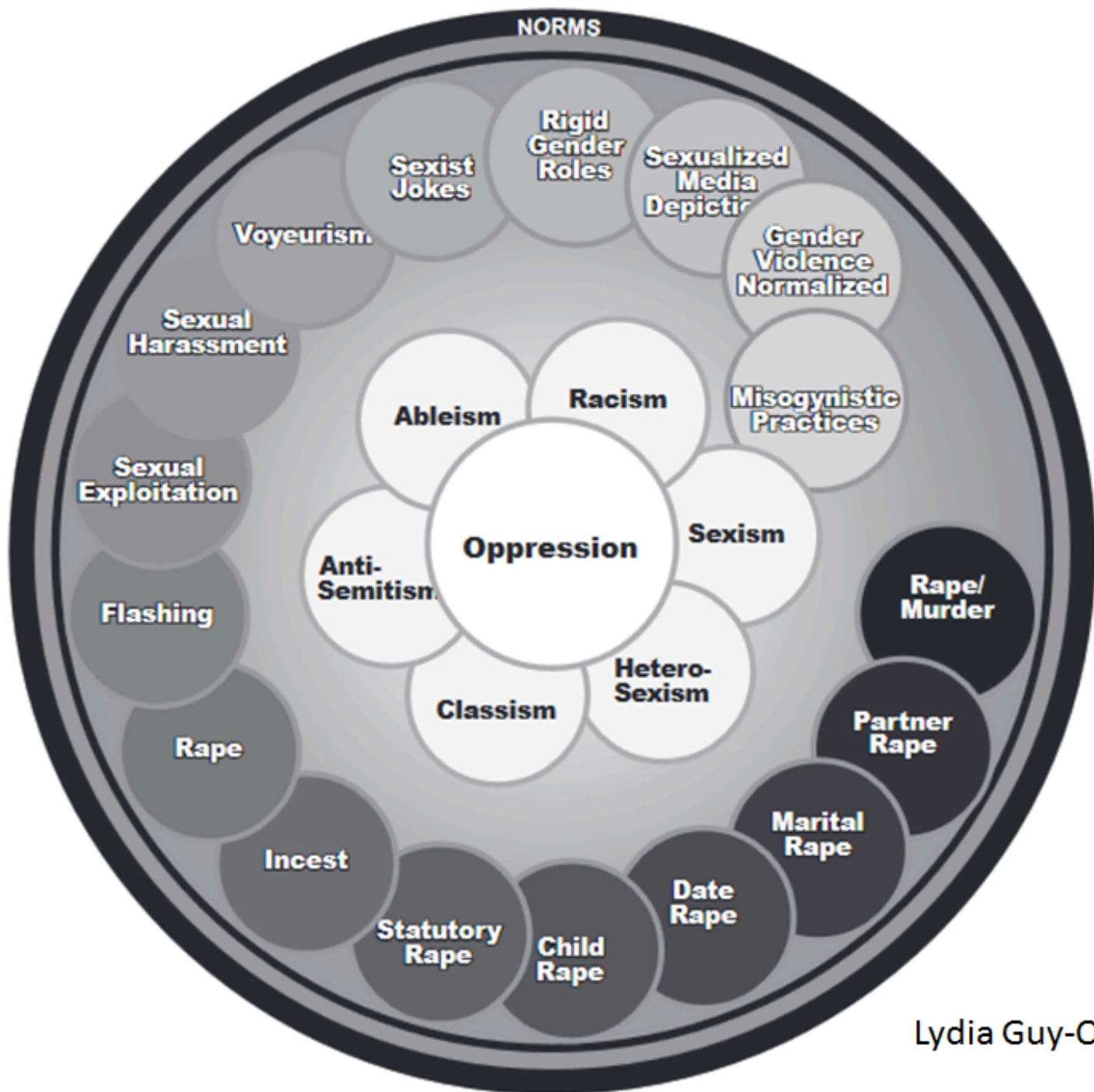
Use the Text Chat feature to answer the question.



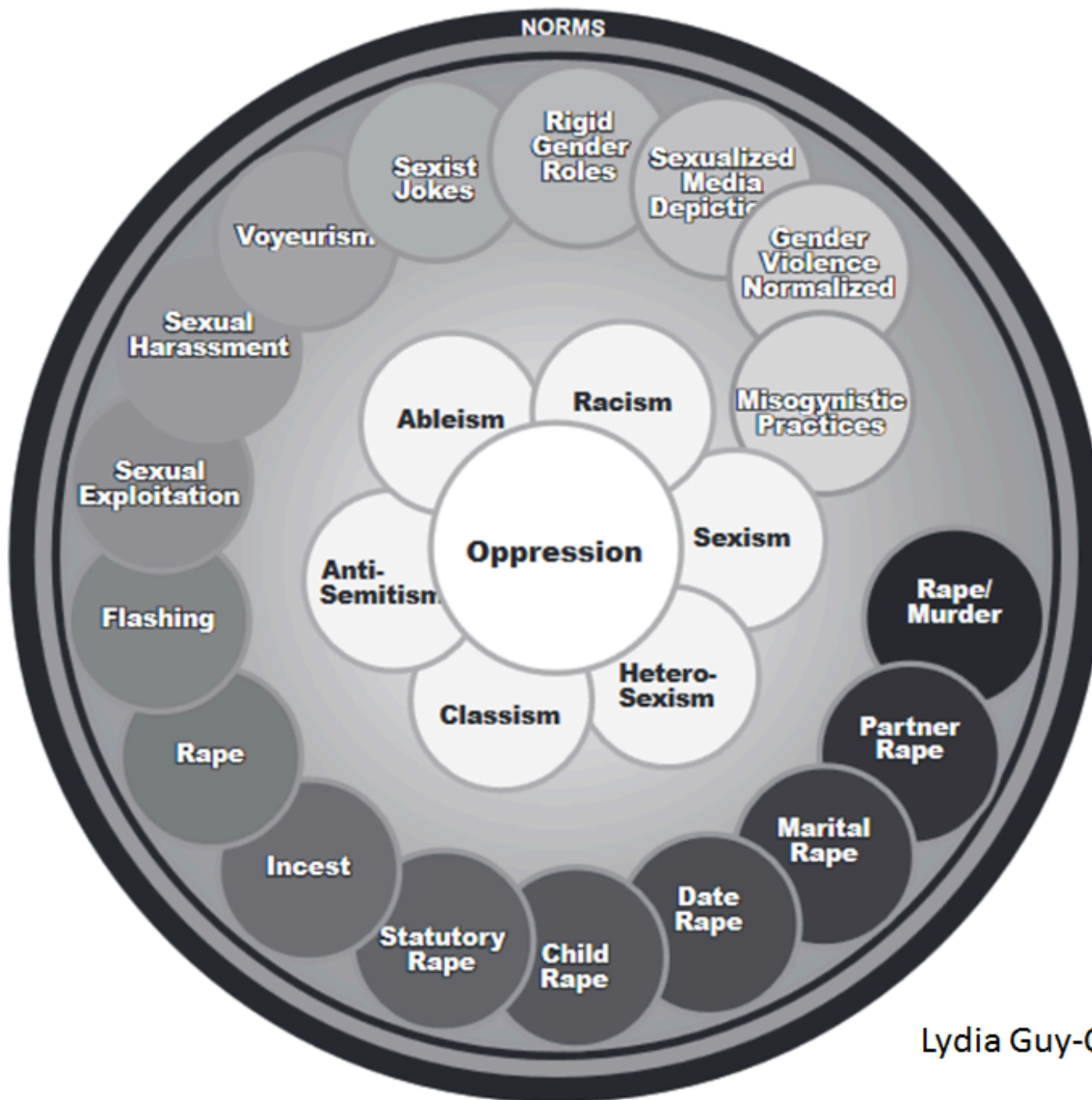


# The Public Health Model





Lydia Guy-Ortiz, 2006



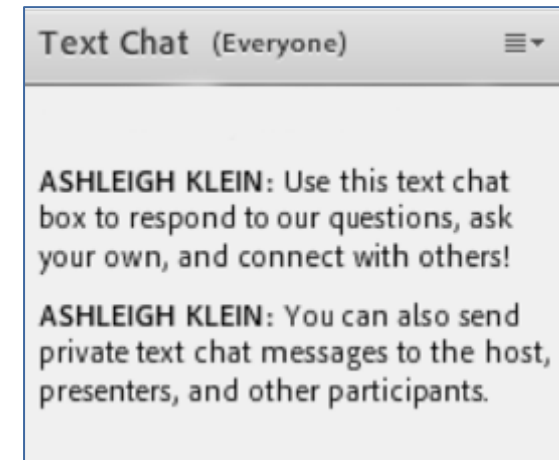
Darker = what is typically seen, noticed, taken seriously

Lighter = what is typically unseen, hidden, not taken as seriously

How do you maintain a solid foundation of anti-oppression in your work? What resources help you along the way?

Text Chat Question

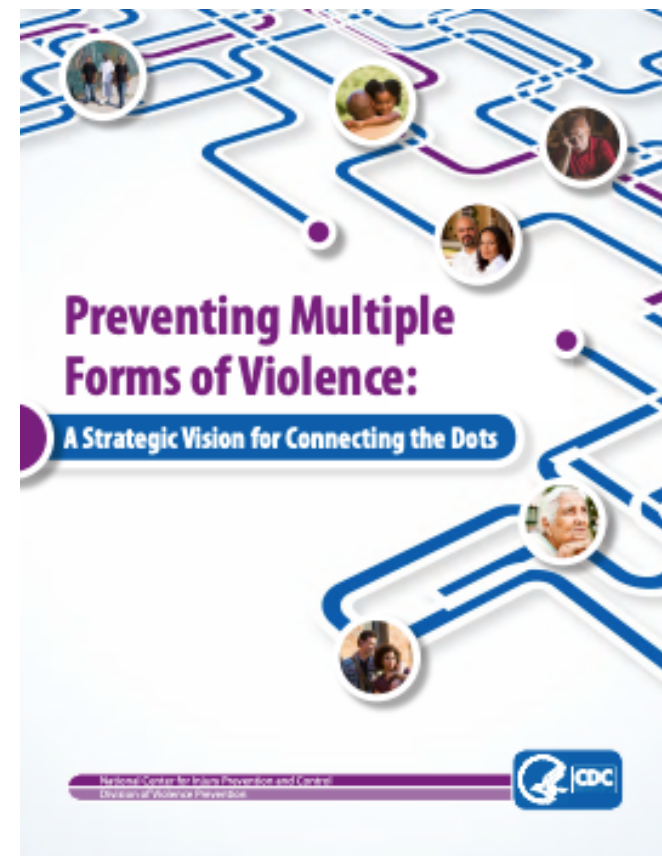
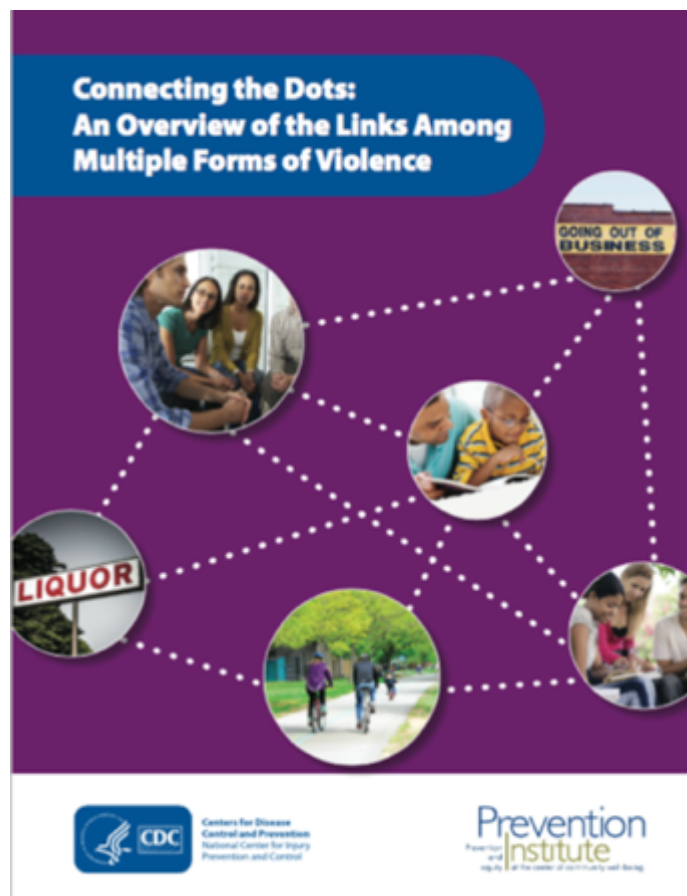
Use the Text Chat feature to answer the question.



# Connect Issues

[https://www.cdc.gov/violenceprevention/pdf/connecting\\_the\\_dots-a.pdf](https://www.cdc.gov/violenceprevention/pdf/connecting_the_dots-a.pdf)

[https://www.cdc.gov/violenceprevention/pdf/Strategic\\_Vision.pdf](https://www.cdc.gov/violenceprevention/pdf/Strategic_Vision.pdf)



# Linkages

- ▶ Multiple forms of violence are
  - ▶ Experienced together
  - ▶ Share common underlying factors
  - ▶ Result in common outcomes
- ▶ Exposure to one form of violence increases risk of further victimization

# Societal and Neighborhood Risk Factors

	CM	TDV	IPV	SV	YV	Bullying	Suicide	Elder Abuse
<b>Norms supporting aggression*</b>	X	X	X	X	X			X
<b>Harmful gender norms*</b>	X	X	X	X	X	X		
<b>Community Violence</b>	X			X	X	X		
<b>Lack of economic opportunities</b>	X		X	X	X		X	
<b>Low Neighborhood Support/ Cohesion*</b>	X	X	X		X		X	

NOTE: CM (Child Maltreatment), TDV (Teen Dating Violence), IPV (Intimate Partner Violence), SV (Sexual Violence), YV (Youth Violence)

\*Norms are generally measured at the individual level



# Neighborhood and Relationship Protective Factors

	CM	TDV	IPV	SV	YV	Bullying	Suicide	Elder Abuse
Coordination of services among community agencies	X		X				X	X
<b>Social cohesion</b>	X	X	X		X	X	X	X
<b>Community support and connectedness*</b>	X		X	X	X		X	X

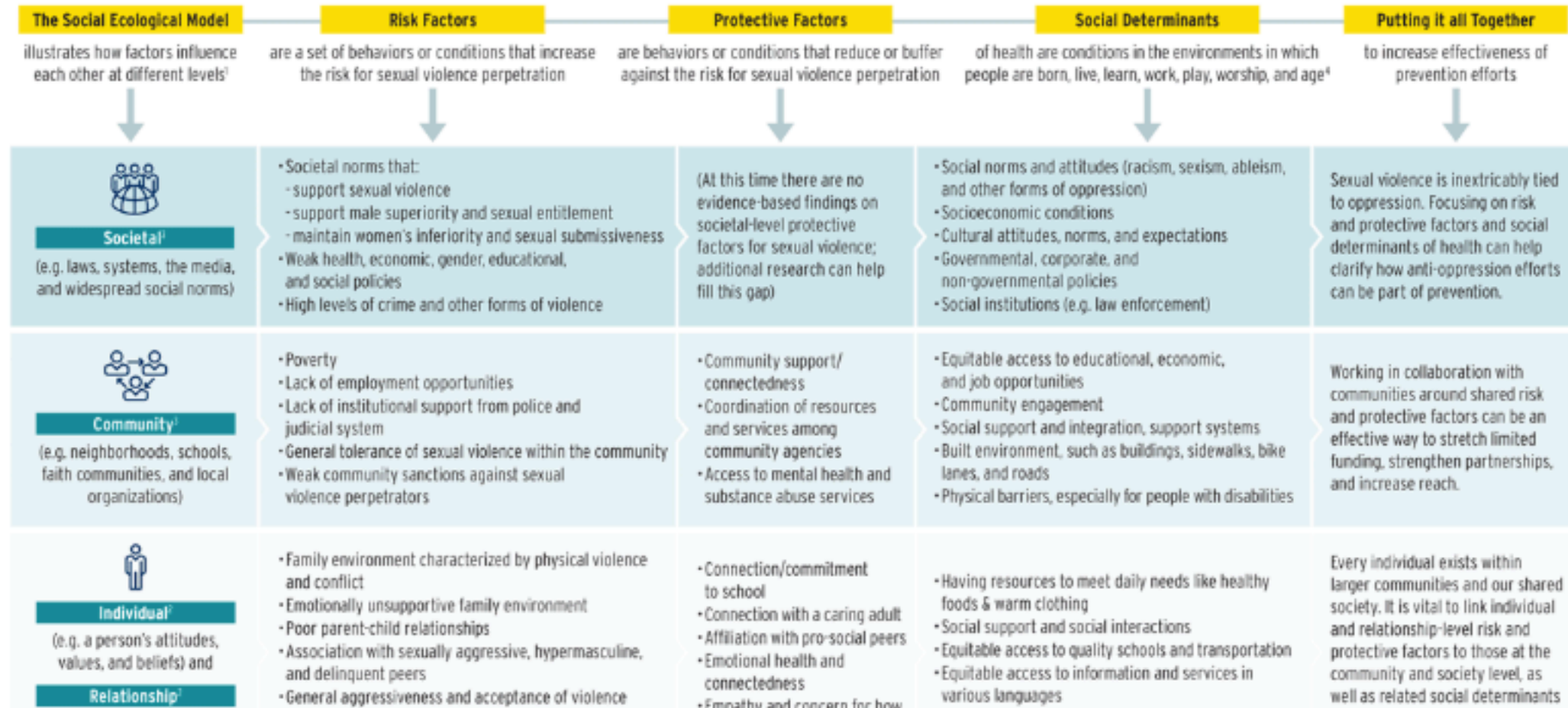
NOTE: CM (Child Maltreatment), TDV (Teen Dating Violence), IPV (Intimate Partner Violence), SV (Sexual Violence), YV (Youth Violence)

\*Community support and connectedness typically measured at the individual level



# RISK & PROTECTIVE FACTORS

This chart maps out risk and protective factors and social determinants of health along various points in the social ecological model. Understanding these factors and determinants at the societal, community, and individual/relationship levels can increase the effectiveness of sexual violence prevention efforts.



<https://www.nsvrc.org/blogs/preventionista/introducing-risk-and-protective-factors-infographic>

# Shared Risk and Protective Factors

## Community



## Society



<https://vetoviolence.cdc.gov/apps/connecting-the-dots/content/discover-connections>

# Multisector Partners



<http://www.preventconnect.org/2019/10/shared-vision-shared-work-engaging-multisector-partners-for-sexual-and-intimate-partner-violence-prevention/>

# Connection to other movements

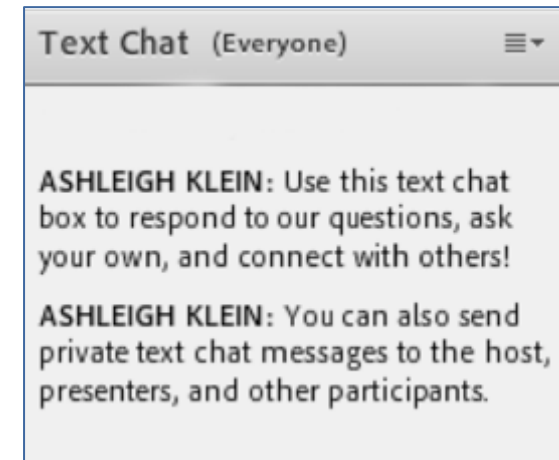


<http://www.preventconnect.org/2016/04/shared-roots-sexual-and-domestic-violence-prevention-strategies-in-support-of-social-justice/>

How do you address  
shared risk and  
protective factors and  
connect your  
prevention work to  
other movements?

Text Chat Question

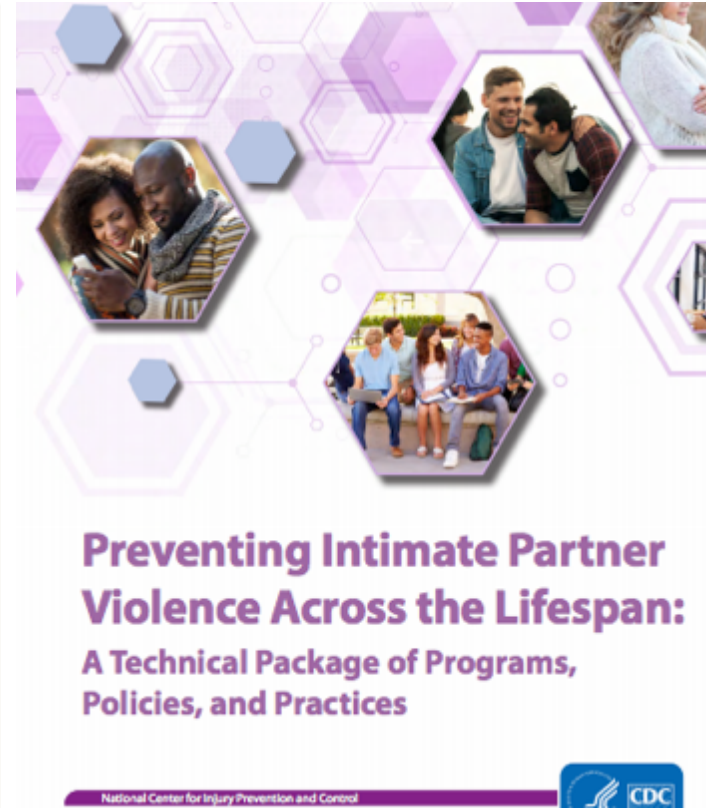
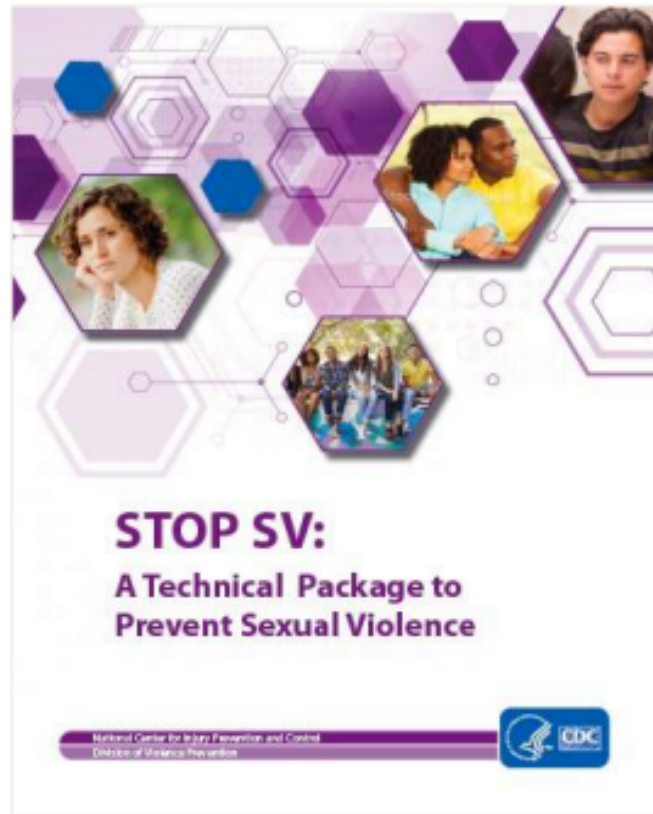
Use the Text Chat feature to  
answer the question.



What works to prevent  
sexual and intimate partner  
violence?

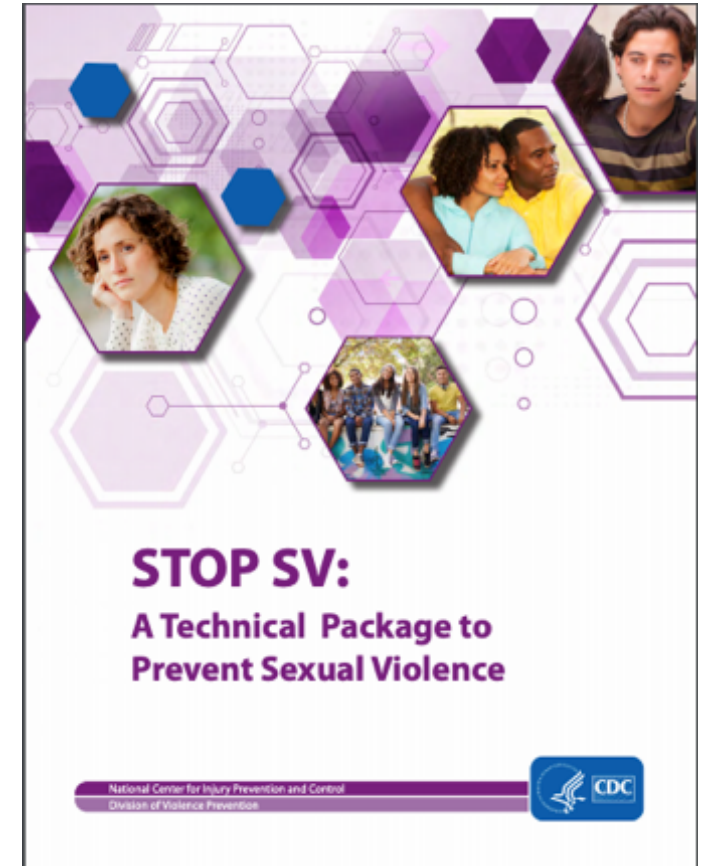


# Violence can be prevented



# What is a Technical Package?

...a select group of strategies based on the best available evidence to help communities and states sharpen their focus on priorities with the greatest potential to reduce violence.






# Structure of Technical Package

- ▶ A Technical Package has these components:
  - ▶ **Strategies** – direction or actions to achieve the goal of preventing violence
  - ▶ **Approaches** – specific ways to advance the strategy
    - **Example programs, policies, or practices**
      - **Evidence** – impact on violence or its associated risk factors

# Sexual Violence Prevention Strategies & Approaches

Strategy	Approach
<b>S</b> – Promote <i>social norms</i> that protect against violence	<ul style="list-style-type: none"><li>▪ Bystander approaches</li><li>▪ Mobilizing men and boys as allies</li></ul>
<b>T</b> – <i>Teach</i> skills to prevent sexual violence	<ul style="list-style-type: none"><li>▪ Social-emotional learning</li><li>▪ Teaching healthy, safe dating and intimate relationship skills to adolescents</li><li>▪ Promoting healthy sexuality</li><li>▪ Empowerment-based training</li></ul>
<b>O</b> – Provide <i>opportunities</i> to empower and support girls and women	<ul style="list-style-type: none"><li>▪ Strengthening economic supports for women and families</li><li>▪ Strengthening leadership and opportunities for girls</li></ul>
<b>P</b> – Create <i>protective</i> environments	<ul style="list-style-type: none"><li>▪ Improving safety and monitoring in schools</li><li>▪ Establishing and consistently applying workplace policies</li><li>▪ Addressing community-level risks through environmental approaches</li></ul>
<b>SV</b> – <i>Support victims/survivors</i> to lessen harms	<ul style="list-style-type: none"><li>▪ Victim-centered services</li><li>▪ Treatment for victims of SV</li><li>▪ Treatment for at-risk children and families to prevent problem behavior including sex offending</li></ul>

# Intimate Partner Violence Prevention Strategies and Approaches

 Preventing IPV	
Strategy	Approach
Teach safe and healthy relationship skills	<ul style="list-style-type: none"><li>• Social-emotional learning programs for youth</li><li>• Healthy relationship programs for couples</li></ul>
Engage influential adults and peers	<ul style="list-style-type: none"><li>• Men and boys as allies in prevention</li><li>• Bystander empowerment and education</li><li>• Family-based programs</li></ul>
Disrupt the developmental pathways toward partner violence	<ul style="list-style-type: none"><li>• Early childhood home visitation</li><li>• Preschool enrichment with family engagement</li><li>• Parenting skill and family relationship programs</li><li>• Treatment for at-risk children, youth and families</li></ul>
Create protective environments	<ul style="list-style-type: none"><li>• Improve school climate and safety</li><li>• Improve organizational policies and workplace climate</li><li>• Modify the physical and social environments of neighborhoods</li></ul>
Strengthen economic supports for families	<ul style="list-style-type: none"><li>• Strengthen household financial security</li><li>• Strengthen work-family supports</li></ul>
Support survivors to increase safety and lessen harms	<ul style="list-style-type: none"><li>• Victim-centered services</li><li>• Housing programs</li><li>• First responder and civil legal protections</li><li>• Patient-centered approaches</li><li>• Treatment and support for survivors of IPV, including TDV</li></ul>

# Promote Social Norms that Protect Against Violence

- Bystander approaches
  - Green Dot
  - Bringing in the Bystander
- Mobilizing men & boys as allies
  - Coaching Boys into Men



# Teach Skills to Prevent Sexual Violence

- Social-emotional learning approaches
  - Second Step
- Teaching healthy, safe dating and intimate relationships
  - Safe Dates





# Teach Skills to Prevent Sexual Violence (cont.)

- Promoting healthy sexuality
  - Strong African American Families (SAAF)
  - Safer Choices
- Empowerment-based training
  - Enhanced Assess, Acknowledge, Act



# Provide Opportunities to Support Girls and Women

- Strengthening economic supports for women and families
  - Comparable worth policies
  - Adequate work supports (e.g., child care, paid leave)
  - Microfinance
- Strengthening leadership and opportunities for adolescent girls
  - Powerful Voices



# Create Protective Environments

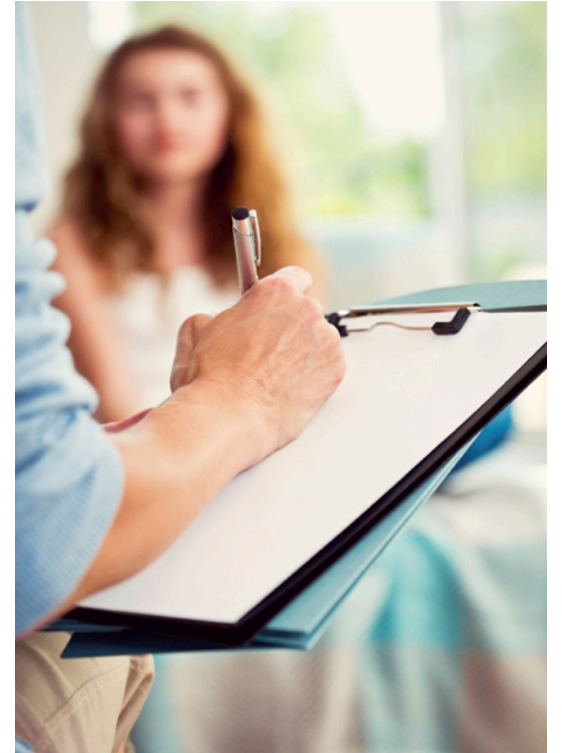
- Improving safety and monitoring in schools
  - Shifting Boundaries Building-level Intervention
- Establishing and consistently applying workplace policies
  - Proactive sexual harassment prevention policies and procedures
- Addressing community-level risks through environmental approaches
  - Alcohol policies (outlet density, pricing)





# Support Victims/Survivors to Lessen Harms

- Victim-centered services
  - Crisis intervention, medical and legal advocacy, access to community resources
- Treatment for victims of SV
  - Trauma-focused Cognitive Behavioral Therapy (TF-CBT)
  - Cognitive Processing Therapy (CPT)
  - Prolonged Exposure Therapy (PET)



# Support Victims/Survivors to Lessen Harms (cont.)

- Treatment for at-risk children and families to prevent problem behavior, including sex offending
  - Multisystemic Therapy–Problem Sexual Behavior (MST–PSB)
  - Children with Problematic Sexual Behavior Cognitive-Behavioral Treatment Program: School-Age Program (PSB–CBT)



# Multi Sector Involvement

- Public health
- Education
- Government (local, state, federal)
- Social services
- Business/labor
- Health services
- Justice
- Housing
- Media
- Non-governmental organizations such as rape crisis centers, SV coalitions

# Evaluation

<https://www.nsvrc.org/prevention/evaluation-toolkit>

+ Don't forget about  
community  
assessment!



Introduction	Evaluation Overview	Evaluation and Social Justice
Evaluation Approaches and Orientations	Doing Evaluation	Outcomes and Indicators
Data Collection	Analyzing Data	Interpreting Data
Evaluating Across the Social Ecology	Evaluation Capacity	Rubrics
Existing Measures	Making Questionnaires More Interactive	Working with External Evaluators, Colleges, and Universities
Evaluation with Minimal Resources	Case Studies	

# Evidence-Based

## A Framework for Thinking About Evidence



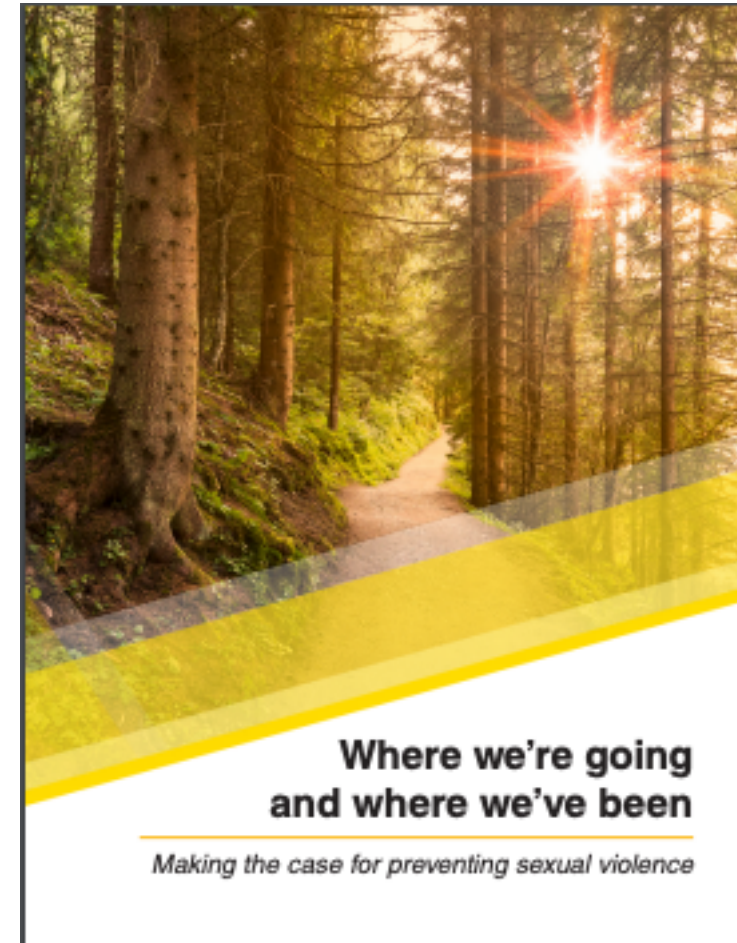
**Figure 1**

[https://www.cdc.gov/violenceprevention/pdf/understanding\\_evidence-a.pdf](https://www.cdc.gov/violenceprevention/pdf/understanding_evidence-a.pdf)

# Communicating About Prevention



[https://www.nsvrc.org/sites/default/files/publications/2018-10/Movingtowardprevention\\_FINAL508.pdf](https://www.nsvrc.org/sites/default/files/publications/2018-10/Movingtowardprevention_FINAL508.pdf)

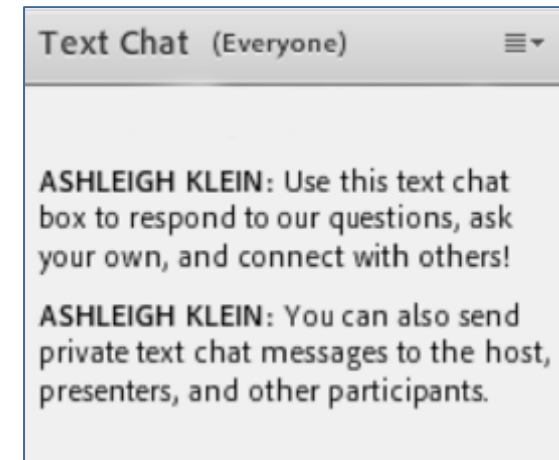


[https://www.raliance.org/wp-content/uploads/2018/08/BMSG\\_MessagingGuide\\_FINAL508-1.pdf](https://www.raliance.org/wp-content/uploads/2018/08/BMSG_MessagingGuide_FINAL508-1.pdf)

What other resources  
do you use to support  
new prevention staff?

Text Chat Question

Use the Text Chat feature to  
answer the question.





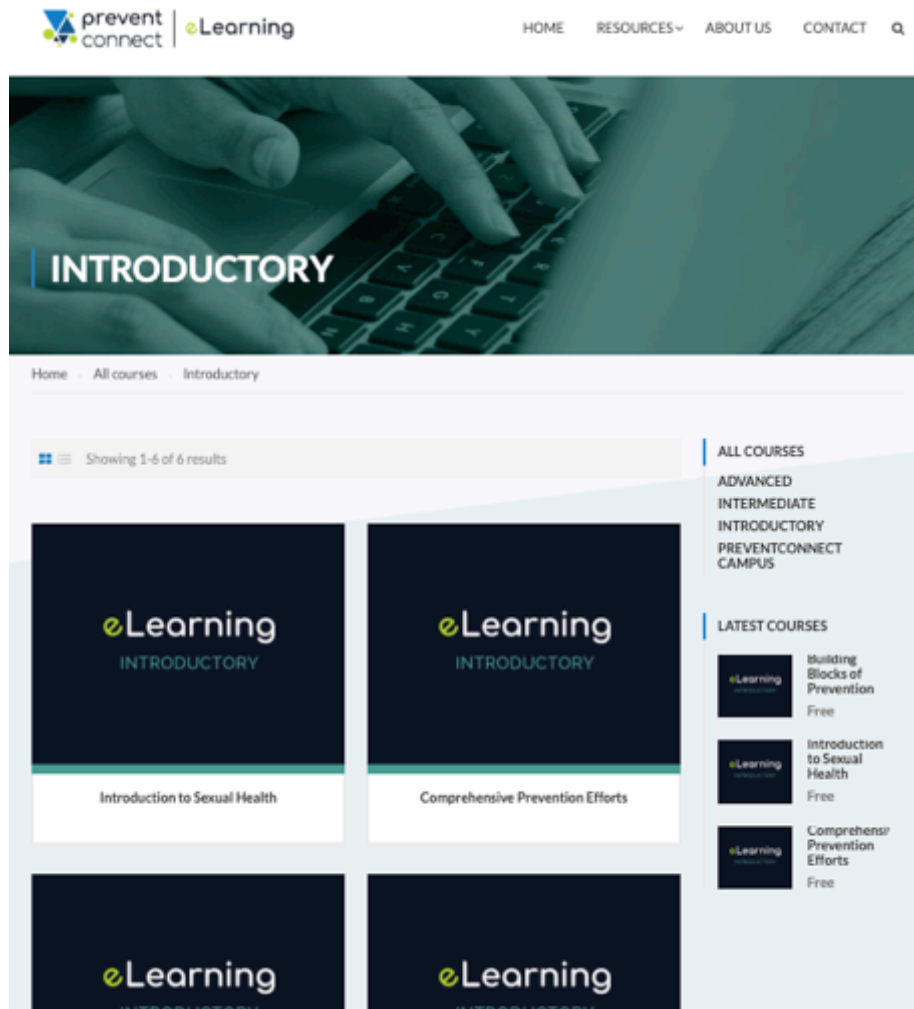
# PreventConnect eLearning



<https://www.learn.preventconnect.org/>



# PreventConnect eLearning



The image shows the 'Introductory' course page on the PreventConnect eLearning platform. The header includes the logo and navigation links. The main banner features a teal background with the word 'INTRODUCTORY' in white. Below the banner, a breadcrumb trail reads 'Home > All courses > Introductory'. A filter bar indicates 'Showing 1-6 of 6 results'. The course grid displays four 'eLearning INTRODUCTORY' cards. The first two are titled 'Introduction to Sexual Health' and 'Comprehensive Prevention Efforts'. The right sidebar lists 'ALL COURSES' (Advanced, Intermediate, Introductory, PreventConnect Campus) and 'LATEST COURSES' (Building Blocks of Prevention, Introduction to Sexual Health, Comprehensive Prevention Efforts, all marked as 'Free').

prevent connect | eLearning

HOME RESOURCES ABOUT US CONTACT

INTRODUCTORY

Home > All courses > Introductory

Showing 1-6 of 6 results

ALL COURSES

- ADVANCED
- INTERMEDIATE
- INTRODUCTORY
- PREVENTCONNECT CAMPUS

LATEST COURSES

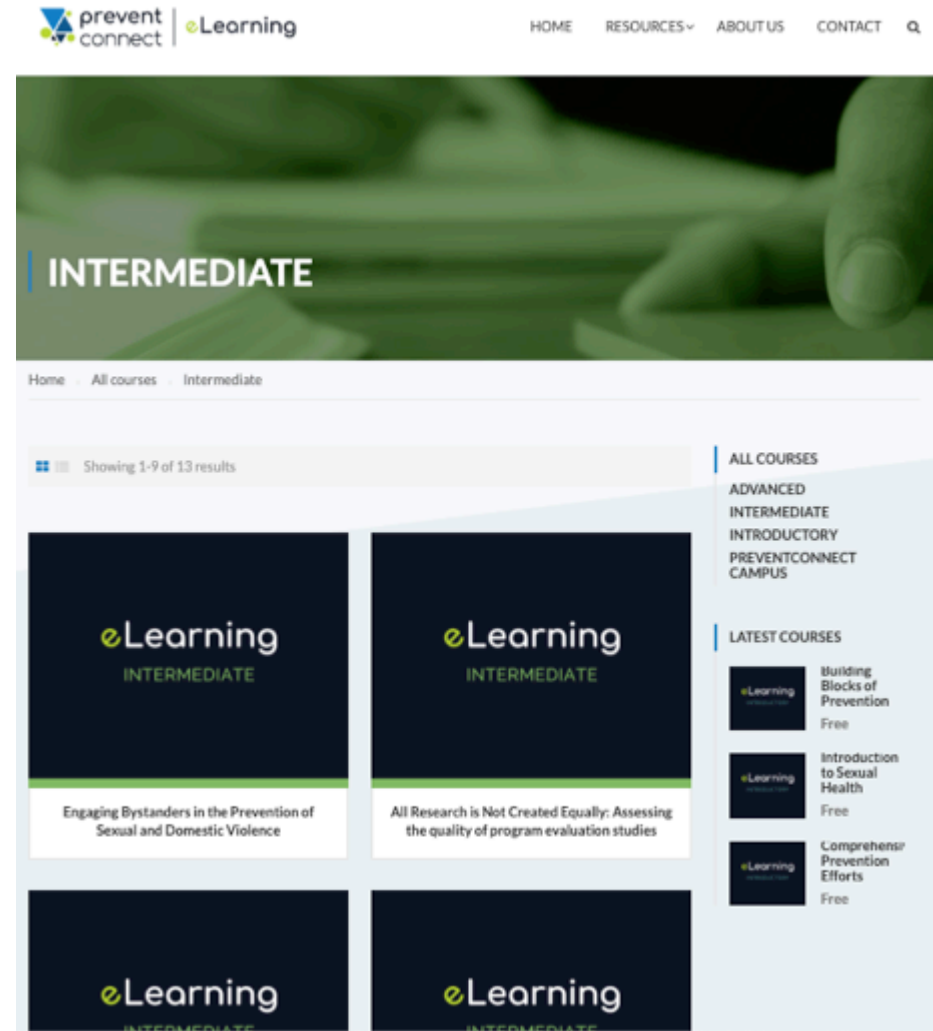
- Building Blocks of Prevention Free
- Introduction to Sexual Health Free
- Comprehensive Prevention Efforts Free

eLearning INTRODUCTORY

Introduction to Sexual Health

eLearning INTRODUCTORY

Comprehensive Prevention Efforts



The image shows the 'Intermediate' course page on the PreventConnect eLearning platform. The header is identical to the introductory page. The main banner features a green background with the word 'INTERMEDIATE' in white. The breadcrumb trail reads 'Home > All courses > Intermediate'. The filter bar indicates 'Showing 1-9 of 13 results'. The course grid displays four 'eLearning INTERMEDIATE' cards. The first two are titled 'Engaging Bystanders in the Prevention of Sexual and Domestic Violence' and 'All Research is Not Created Equally: Assessing the quality of program evaluation studies'. The right sidebar lists 'ALL COURSES' and 'LATEST COURSES' (Building Blocks of Prevention, Introduction to Sexual Health, Comprehensive Prevention Efforts, all marked as 'Free').

prevent connect | eLearning

HOME RESOURCES ABOUT US CONTACT

INTERMEDIATE

Home > All courses > Intermediate

Showing 1-9 of 13 results

ALL COURSES

- ADVANCED
- INTERMEDIATE
- INTRODUCTORY
- PREVENTCONNECT CAMPUS

LATEST COURSES

- Building Blocks of Prevention Free
- Introduction to Sexual Health Free
- Comprehensive Prevention Efforts Free

eLearning INTERMEDIATE

Engaging Bystanders in the Prevention of Sexual and Domestic Violence

eLearning INTERMEDIATE

All Research is Not Created Equally: Assessing the quality of program evaluation studies

# NSVRC + PCAR Campus

[Campus](#) [My courses ▶](#) [NSVRC Links ▶](#) [PCAR Links ▶](#)  [Tori ▶](#)



 **TAKE NOTE** 

Seeking course credit?

PA Sexual Assault  
Counselor Training

Your Information & Privacy



 **NAVIGATION** 

[Home](#)

[Dashboard](#)

[My courses](#)

[Courses](#)

 **GETTING AROUND** 

Campus Navigation



**Welcome to the online learning campus!**

This joint effort between the Pennsylvania Coalition Against Rape (PCAR) and the National Sexual Violence Resource Center (NSVRC) aims to provide a variety of eLearning modules to educate and support you in your efforts to prevent and respond to sexual Violence.

**Visit [Free Courses](#) or [Certificate Courses](#).**

**Free Courses**

**Certificate Courses**

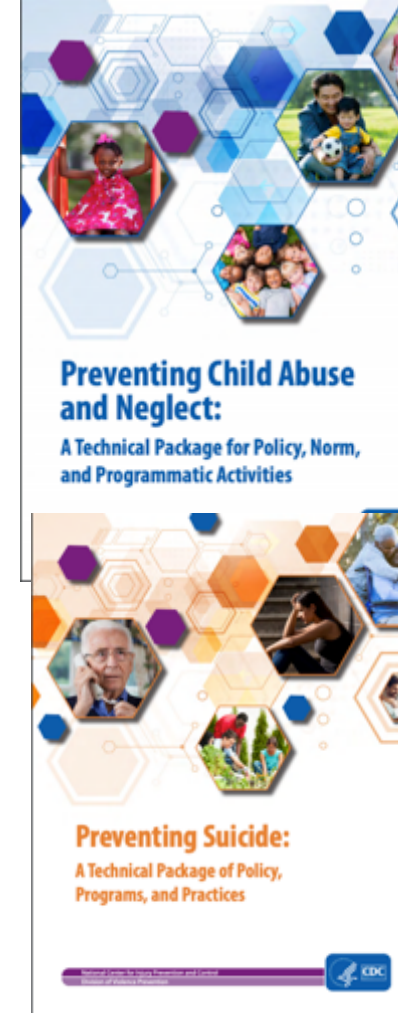
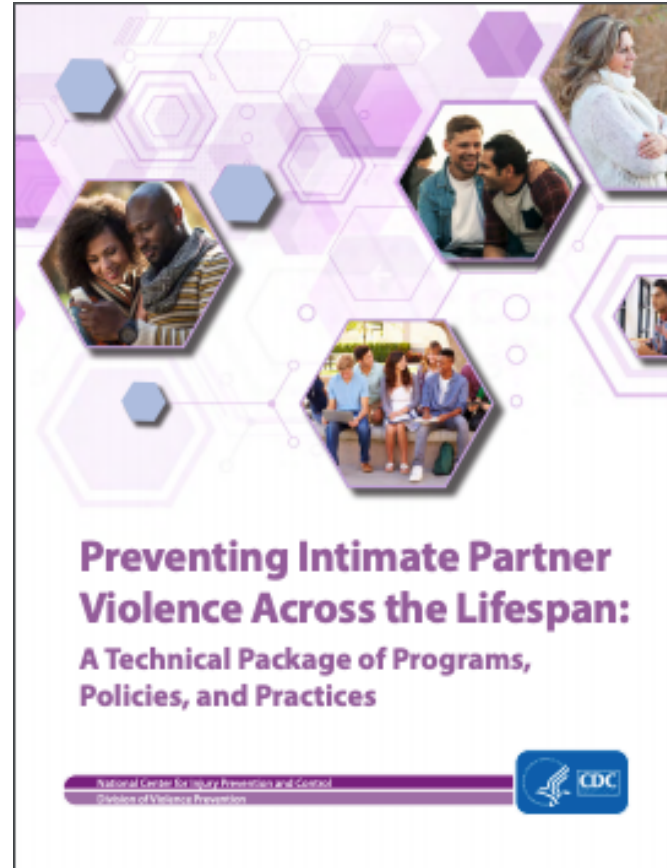
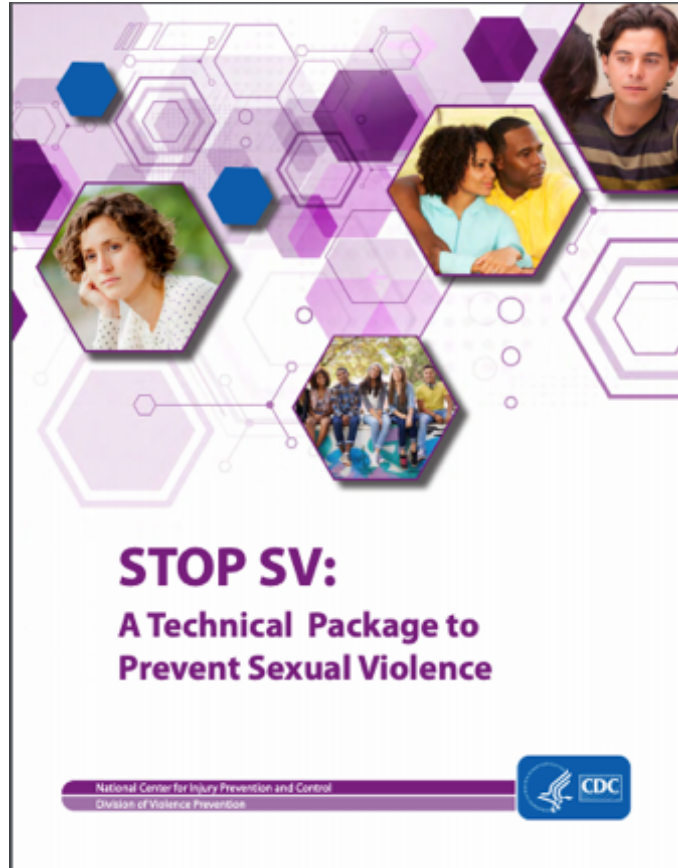
 [Your Information & Privacy](#)

 [Campus Computer Requirements](#)

 [Credit for Campus Courses](#)

<https://campus.nsvrc.org/>

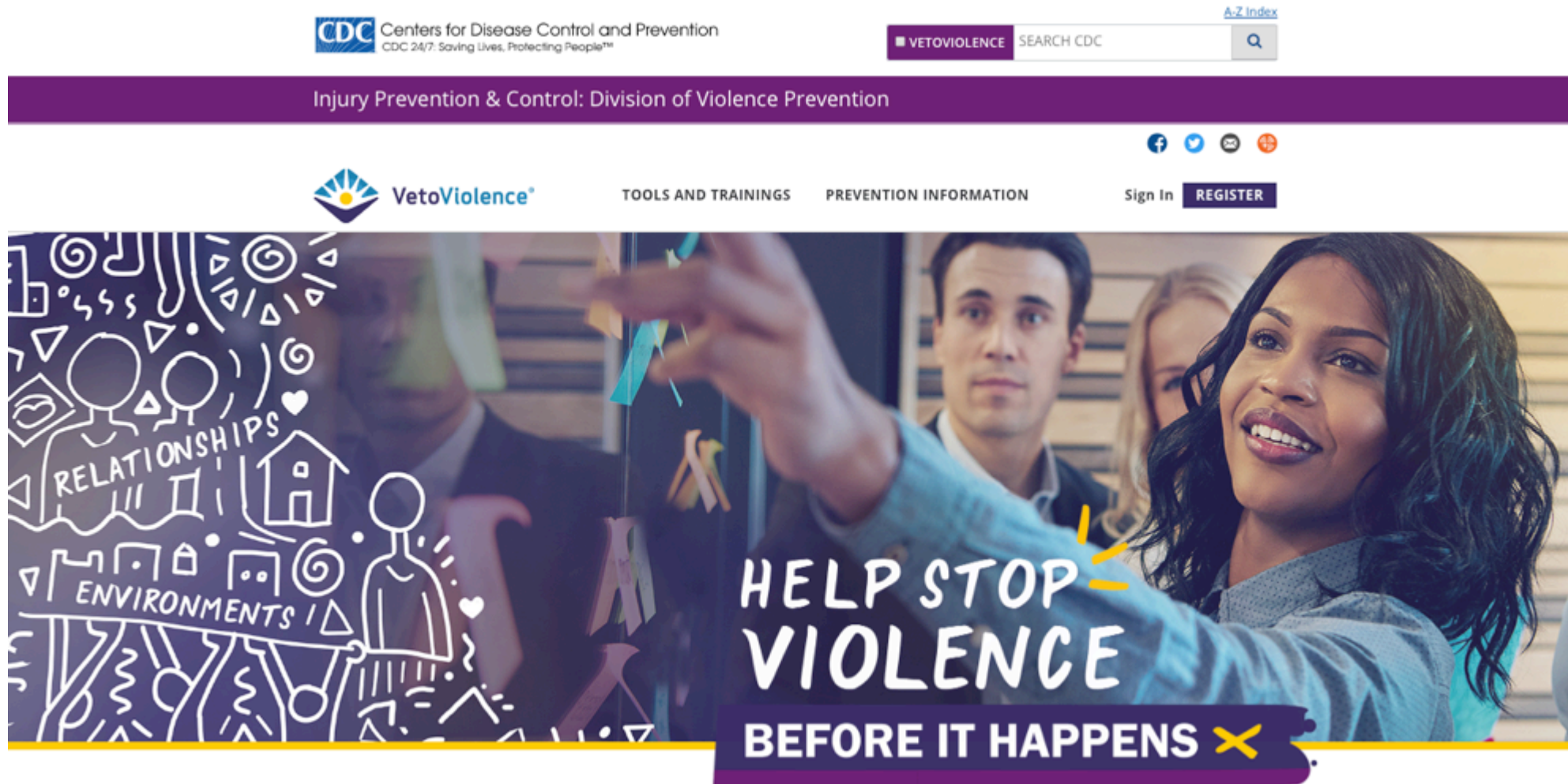
# CDC Technical Packages



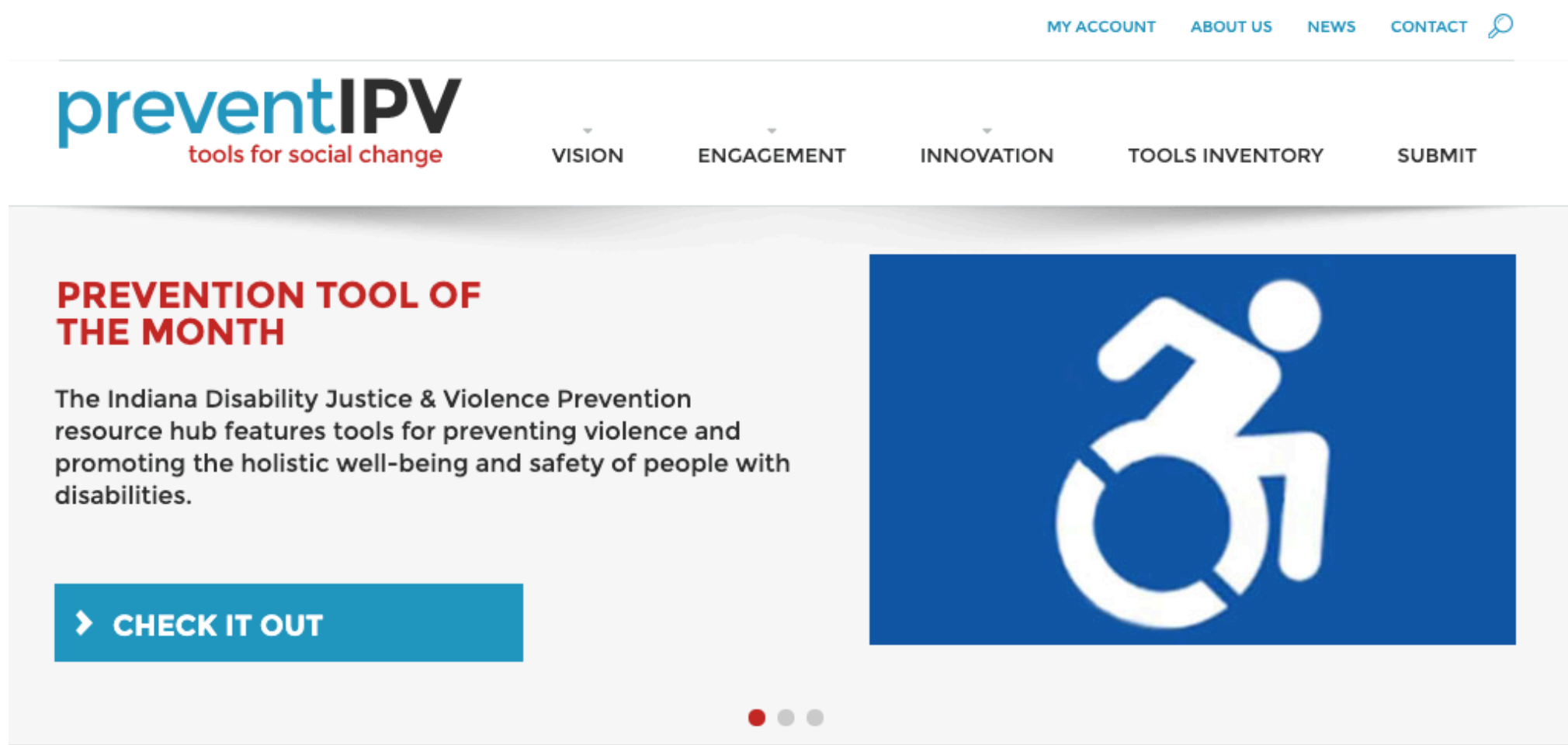
<https://www.cdc.gov/violenceprevention/pub/technical-packages.html>



# VetoViolence Online Trainings and Information



[https://  
vetoviolence.cdc.gov/  
apps/main/home](https://vetoviolence.cdc.gov/apps/main/home)



<https://preventipv.org/>



prevent  
connect

[PreventConnect.org](http://PreventConnect.org)

[info@PreventConnect.org](mailto:info@PreventConnect.org)

[PreventConnect.org/email](http://PreventConnect.org/email) – email group

[Learn.PreventConnect.org](http://Learn.PreventConnect.org) – eLearning

### **Follow Us**

[twitter.com/PreventConnect](https://twitter.com/PreventConnect)

[facebook.com/PreventConnect](https://facebook.com/PreventConnect)