

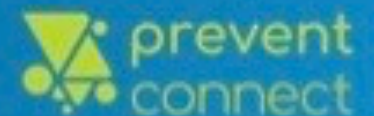
Welcome, this web conference will begin soon



# Back to Basics

Preventing Sexual and Intimate  
Partner Violence

Thursday, December 17<sup>th</sup>, 2020



# Meet the PreventConnect Team



Ashleigh Klein-Jimenez  
Director of Prevention  
she/her/hers



Tori VandeLinde  
Project Coordinator  
she/her/hers



prevent  
connect

[PreventConnect.org](http://PreventConnect.org)

[info@PreventConnect.org](mailto:info@PreventConnect.org)

[PreventConnect.org/email](http://PreventConnect.org/email) – email group

[Learn.PreventConnect.org](http://Learn.PreventConnect.org) – eLearning

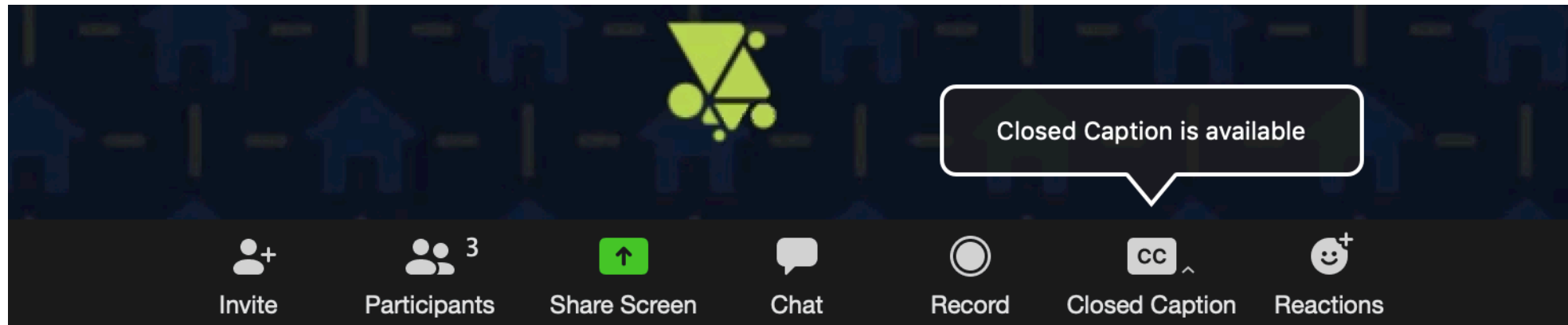
Follow Us

[twitter.com/PreventConnect](https://twitter.com/PreventConnect)

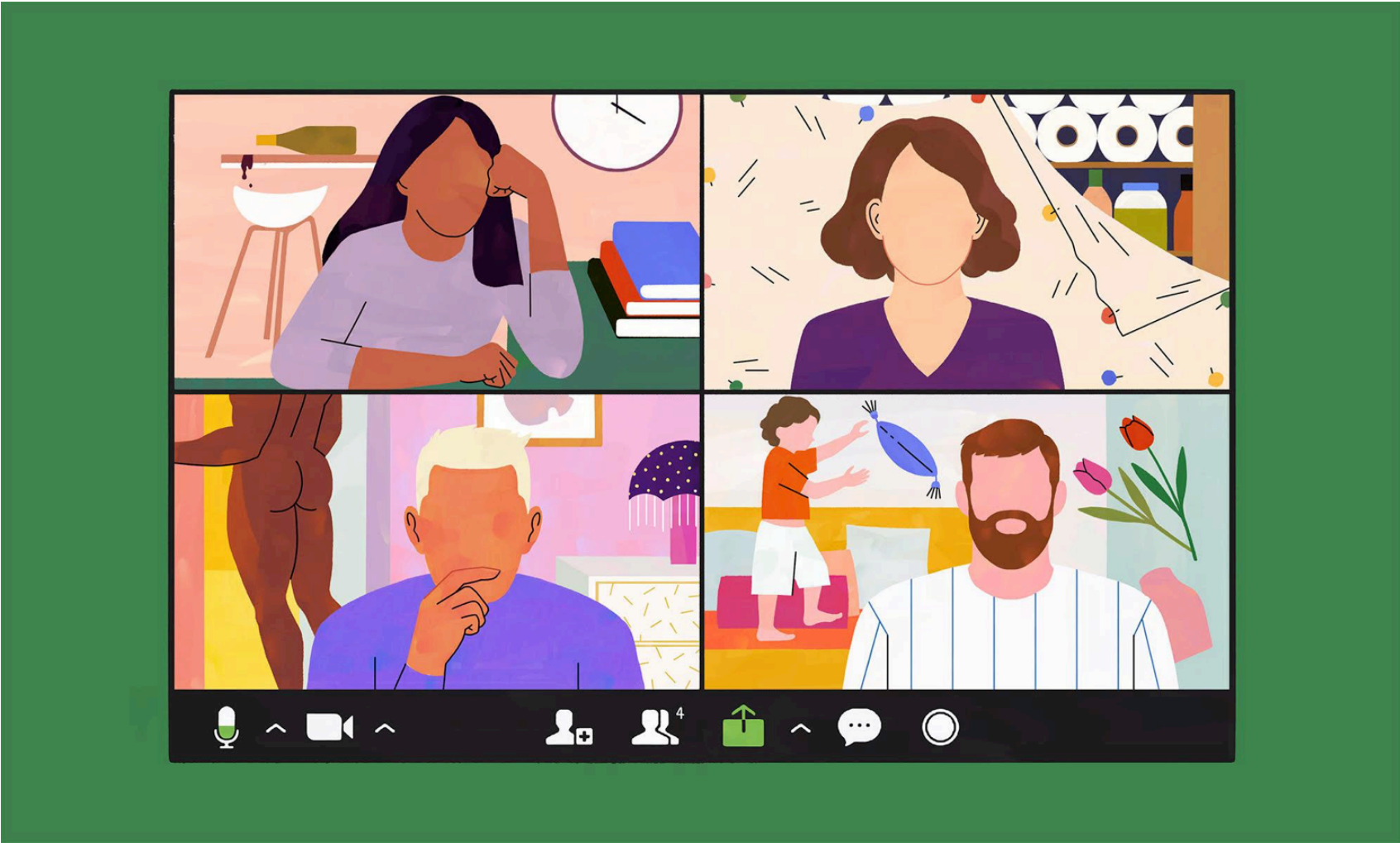
[facebook.com/PreventConnect](https://facebook.com/PreventConnect)

# How to use Zoom

- ▶ Text chat
- ▶ PowerPoint Slides
- ▶ Polling Questions
- ▶ Phone
- ▶ Closed Captioning
- ▶ Web Conference Guidelines



# How this landscape is impacting us



# PreventConnect

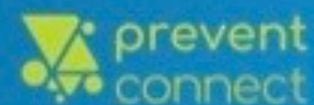
- ▶ Domestic violence/intimate partner violence
- ▶ Sexual violence
- ▶ Violence across the lifespan, including child sexual abuse
- ▶ Prevent before violence starts
- ▶ Connect to other forms of violence and oppression
- ▶ Connect to other prevention practitioners



# Back to Basics

## Preventing Sexual and Intimate Partner Violence

Thursday, December 17<sup>th</sup>, 2020



PreventConnect is a national project of the California Coalition Against Sexual Assault sponsored by the U.S. Centers for Disease Control and Prevention. The views and information provided in this web conference do not necessarily represent the official views of the U.S. government, CDC or CALCASA.



# Objectives

- ▶ Define primary prevention
- ▶ Describe examples of prevention in the real world
- ▶ Identify resources to expand prevention knowledge



# Language Matters

mobilization  
practice approach public  
model public available adaptation  
prevention boys protective prevention  
efficacy and primary research-informed  
men ecological  
risk technical best  
ACEs environments  
creating factors social  
health risk shared  
protective health  
factors science best  
assistance

WordItOut

# What does prevention look like to you?

Text Chat Question



Chat

From Me to **Everyone**:

Use this text chat box to respond to our questions, ask your own, and connect with others!

To: **Everyone** ▼

Type message here...

# Prevention is happening



# Why go back to basics?



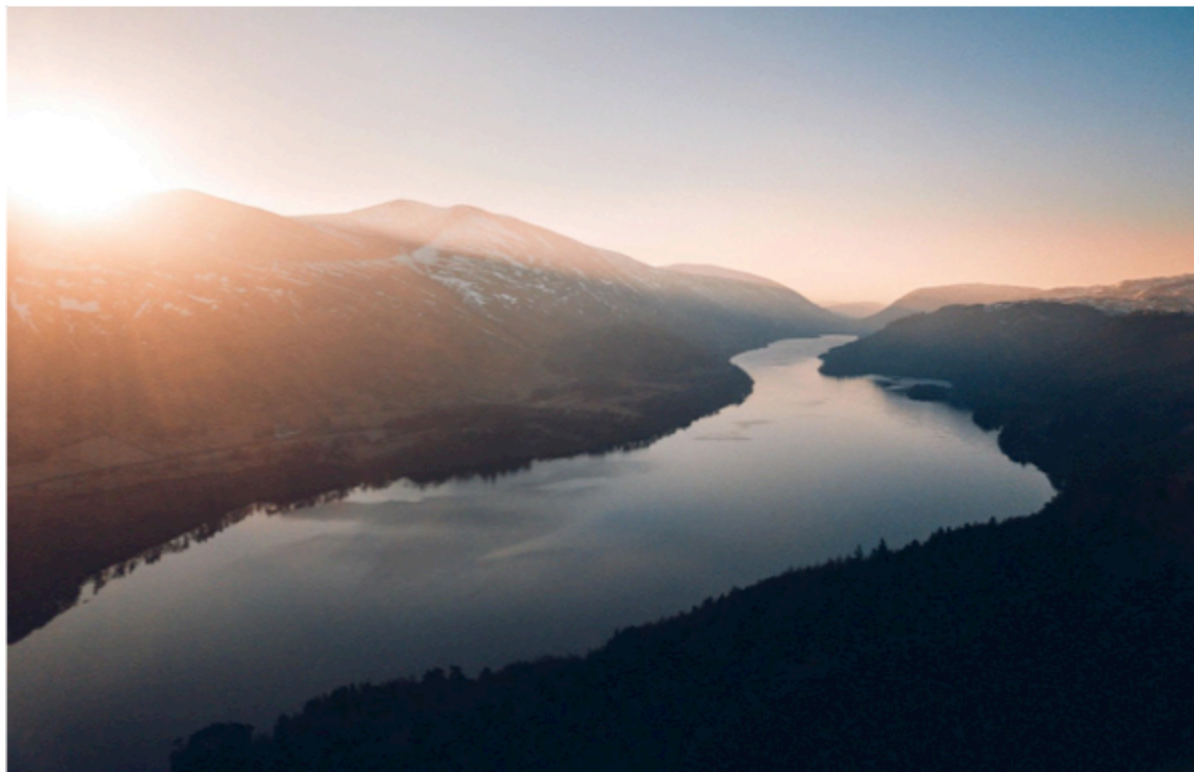
# Personal Path to Prevention



# What is your personal path to prevention?

Journal to yourself or respond in the chat if that feels safe and supportive for you

# Moving Upstream Story



# Prevention Can Take Many Forms





# Social Norms that Contribute to Sexual Violence: How did the bridge get broken?

## **Social Norms**

- Rigid gender roles
- Aggression and Violence
- Abuse of power
- SV as a private problem
- Acceptance of violence as the norm
- Sex shaming and negativity

## **Change Strategies**

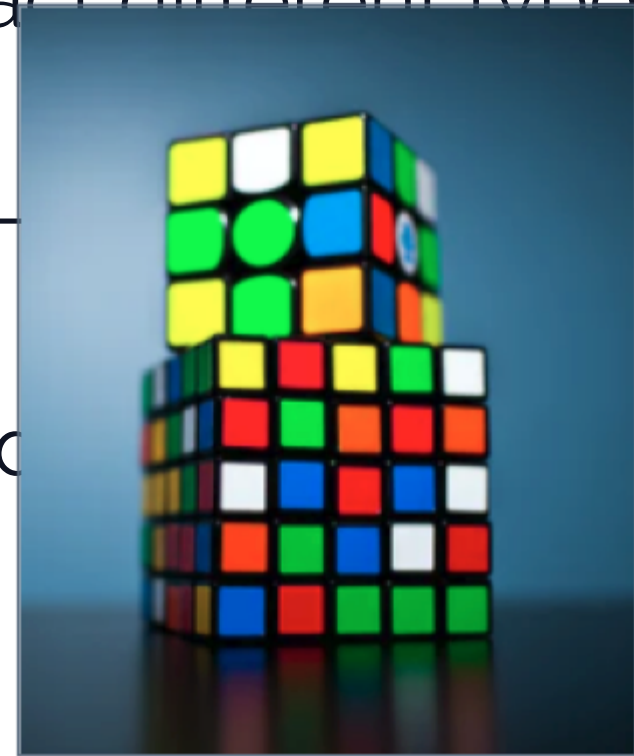
- Challenging sexism by creating leadership opportunities for girls and women
- Promoting healthy communication
- Treating SV as a public concern
- Bystander Intervention
- Information about healthy sexuality

# Get to know the Problem: How is the bridge broken?

- Identify the different dynamics that impact different types of sexual violence

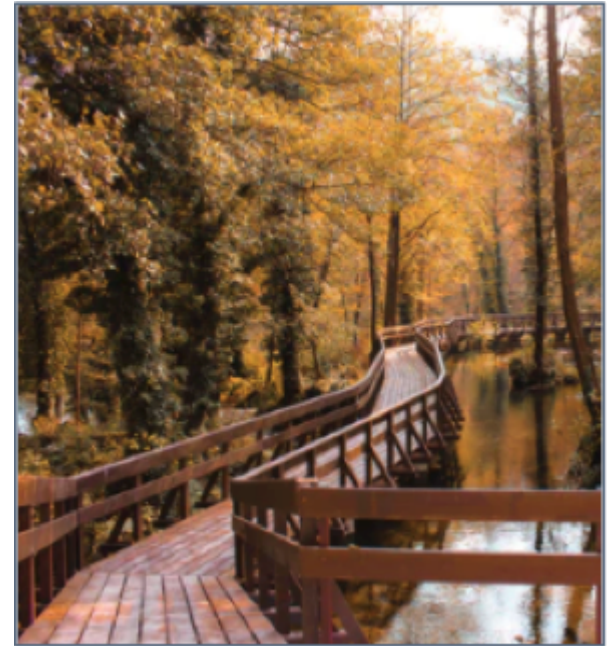
How many people are being impacted? How long impacted?

- How are different communities impacted?



# Protect Against the Problem: How do we repair the bridge?

- Improving safety in schools
- Changing policies
- Connect youth with safe, caring adults
- Foster youth commitment to school and positive projects
- Teach young people skills to support healthy relationships
- Community connectedness
- Increase access to resources



What do broken  
bridges represent in  
your communities?  
What is needed to  
repair the bridge?

Text Chat Question



Chat

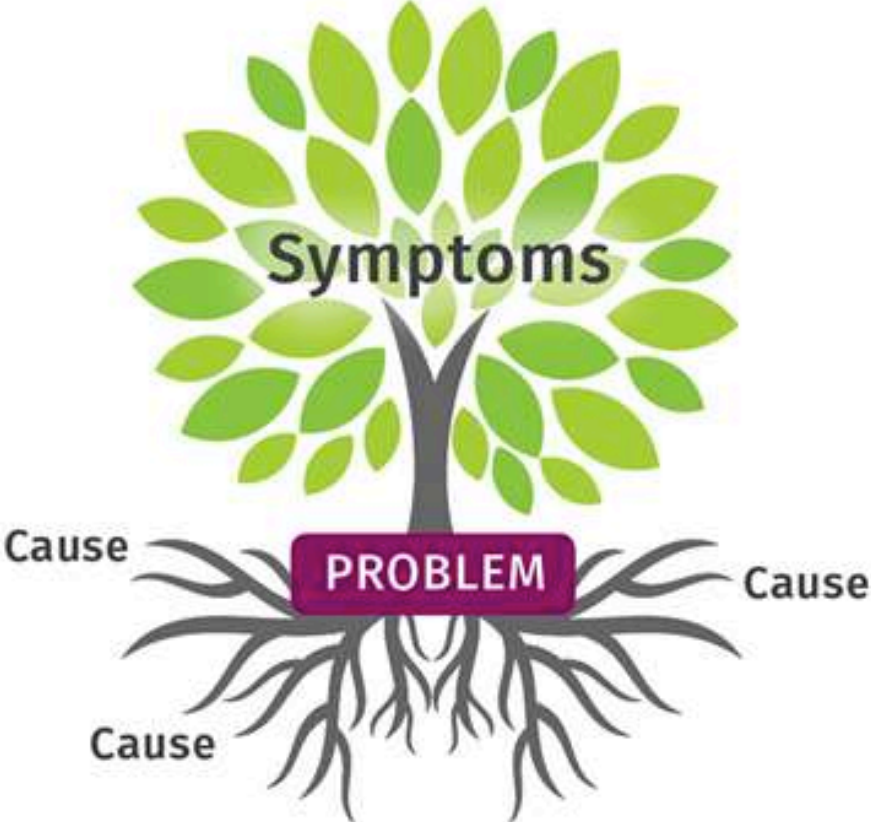
From Me to **Everyone**:

Use this text chat box to respond to our questions, ask your own, and connect with others!

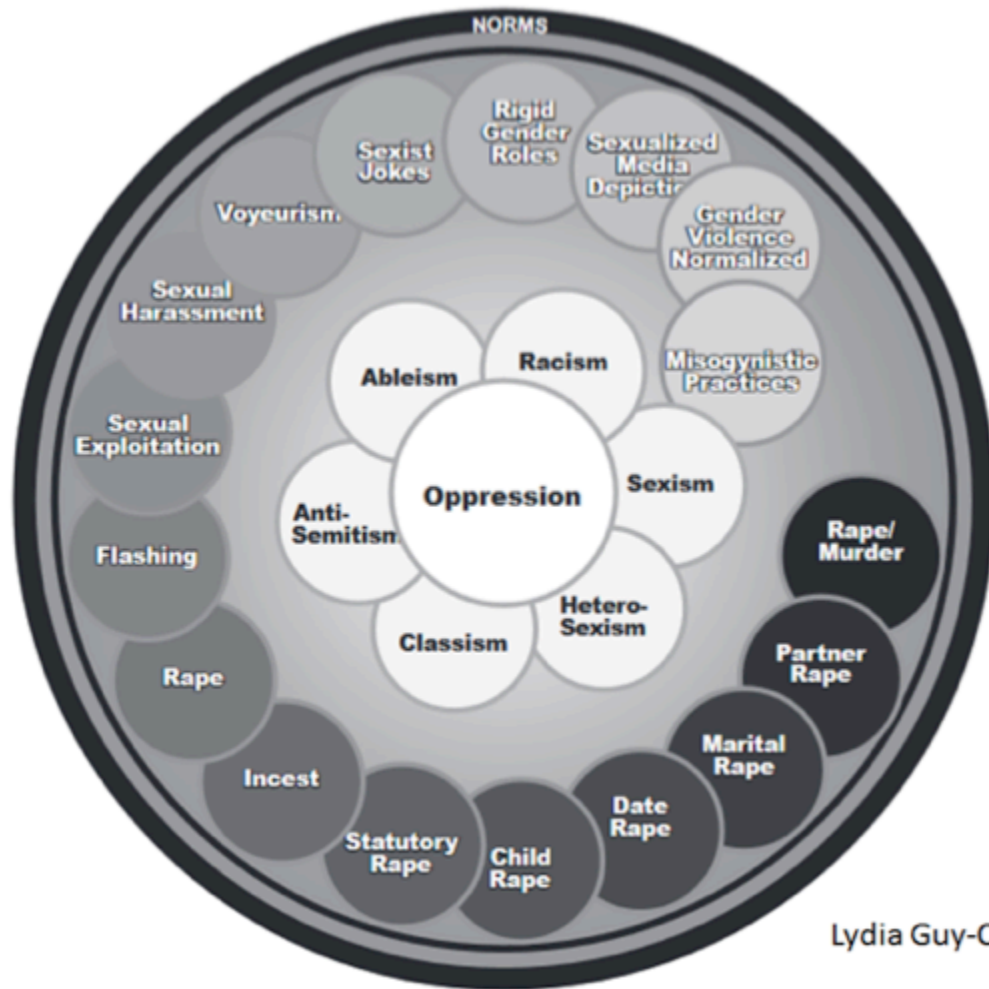
To: **Everyone** ▼

Type message here...

# Root Causes

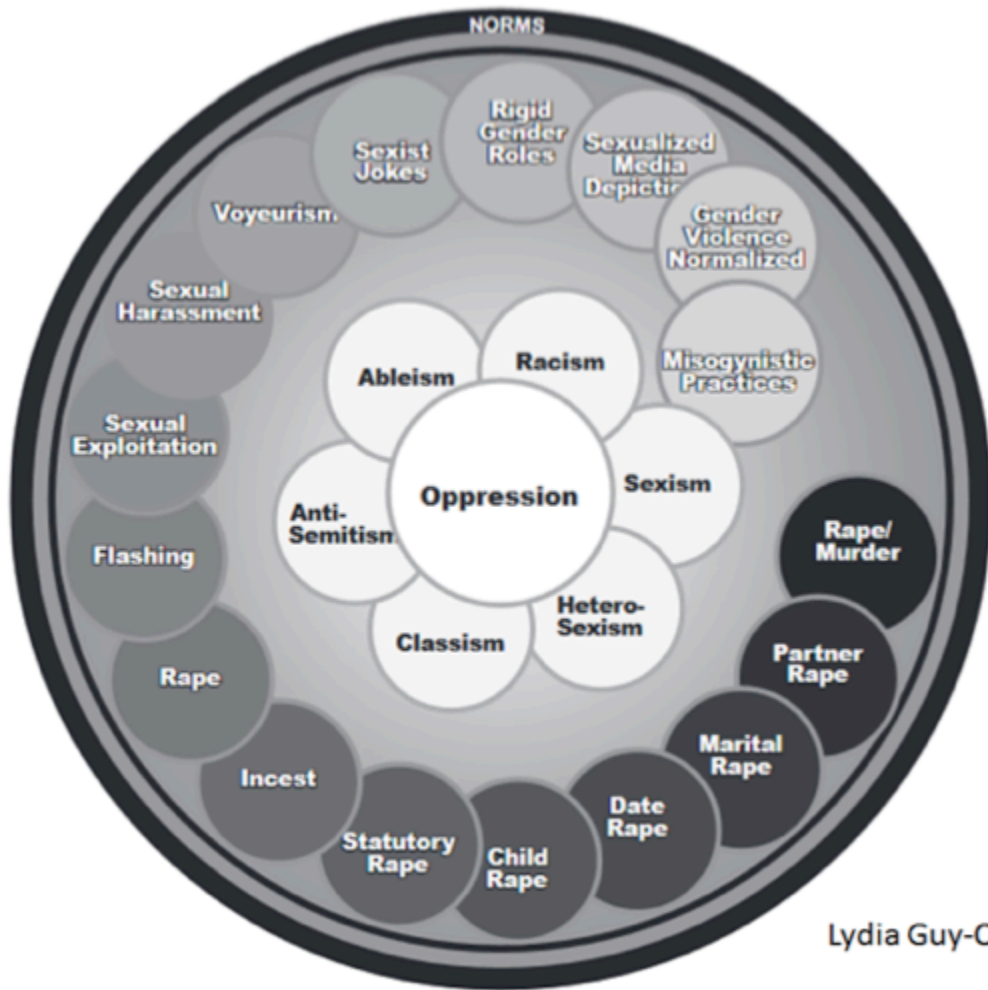


# Root Causes of Violence



Lydia Guy-Ortiz, 2006

# Root Causes of Violence

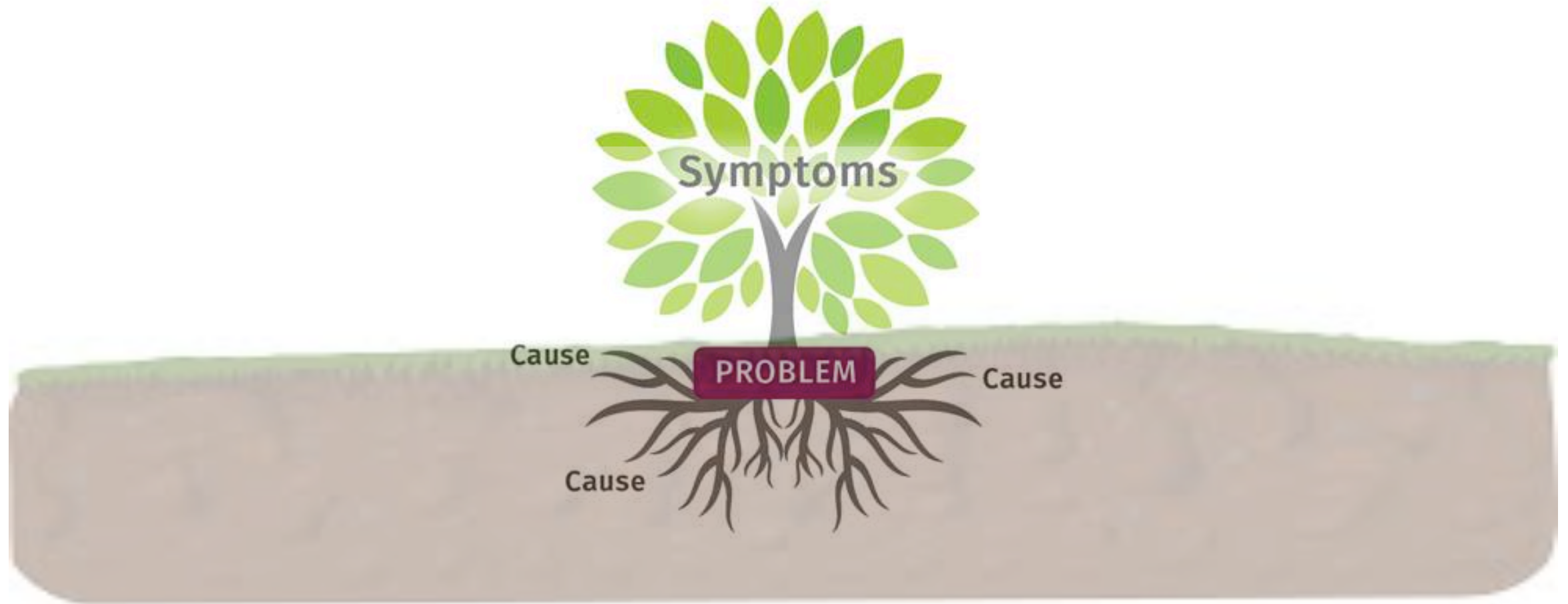


Lydia Guy-Ortiz, 2006

Darker = what is typically seen, noticed, taken seriously

Lighter = what is typically unseen, hidden, not taken as seriously

# The soil and seeds of root causes





In your communities,  
what do you see as  
root causes of  
violence? What  
pollutants are in the  
soil?

Text Chat Question



Chat

From Me to **Everyone**:

Use this text chat box to respond to our questions, ask your own, and connect with others!

To: **Everyone** ▼

Type message here...



thebodyisnotanapology • Follow ...



thebodyisnotanapology We appreciate @hafsakhizer\_art's discussion countering the common adage "bloom where you're planted". What would it look like for the soil you're in to actually provide the nutrients and sustenance you require and desire? 🌱 I have an Unpopular opinion on this phrase - I understand the wisdom in making peace with things you can't control but I also think this is a very damaging mindset.

The glorification of emotional martyrdom that comes from accepting your life conditions with patience is overrated.

You don't know When to make the shift between being patient in your



1,698 likes

AUGUST 17

Comments on this post have been limited.

<https://www.instagram.com/p/CEAvf65qNVm/>

**“What would it look like for the soil you're in to actually provide the nutrients and sustenance you require and desire?”**

**Awareness**

**Prevention**



“It is unreasonable to expect that people will change their behavior easily when so many forces in the social, cultural, and physical environment conspire against such change.”

Institute of Medicine

# It takes more than information



# My knowledge

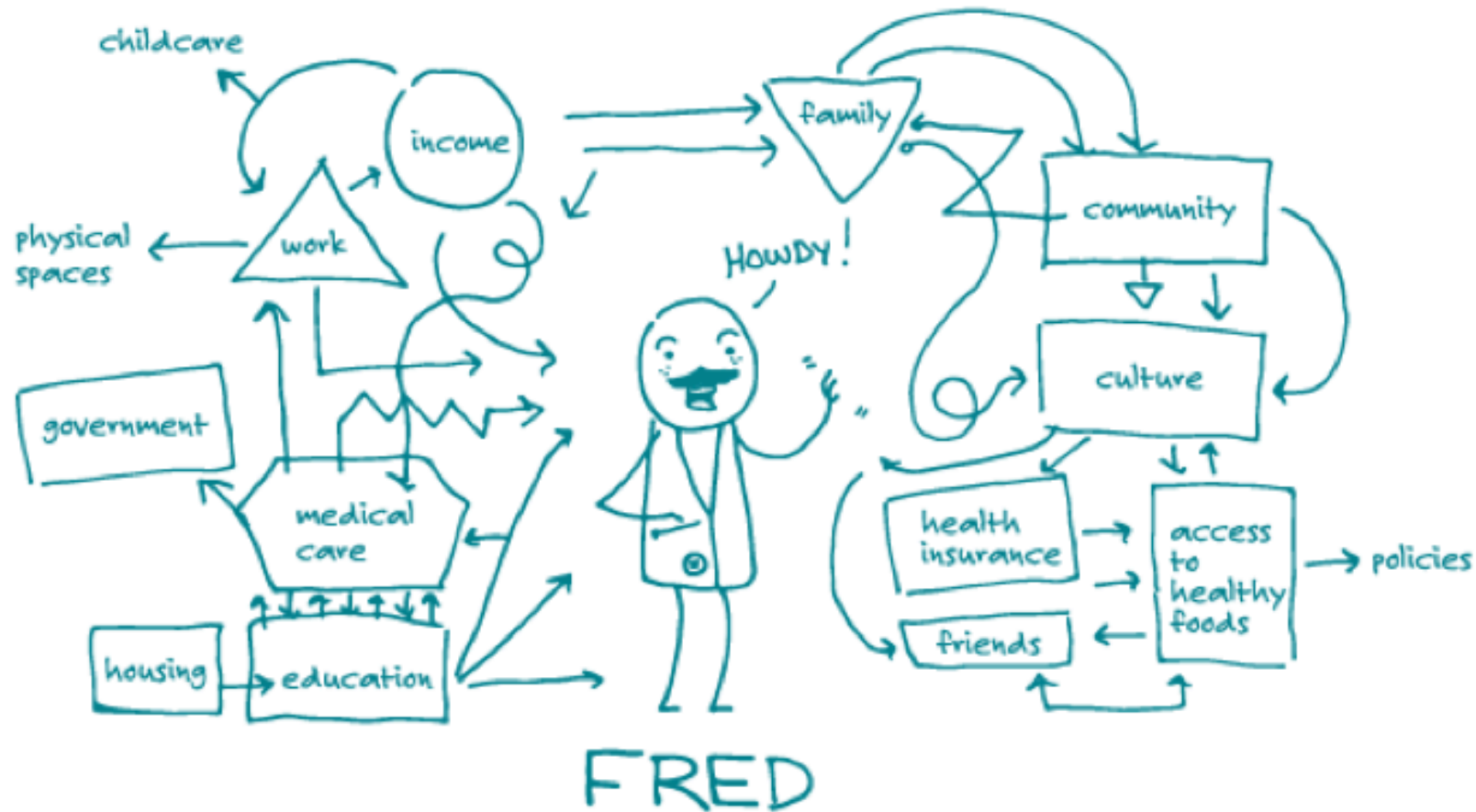


# My environment



# Our environments matter

SEE? IT'S THIS EASY!



<https://medium.com/wehearthealthliteracy/useful-theory-social-ecological-model-62d7fb1e8e88>



What are things in  
your environment  
that promote or  
prevent violence?

Text Chat Question



Chat

From Me to **Everyone**:

Use this text chat box to respond to our questions, ask your own, and connect with others!

To: **Everyone** ▼

Type message here...

# What's in an environment?



# What are social norms?



# Social Norms Change

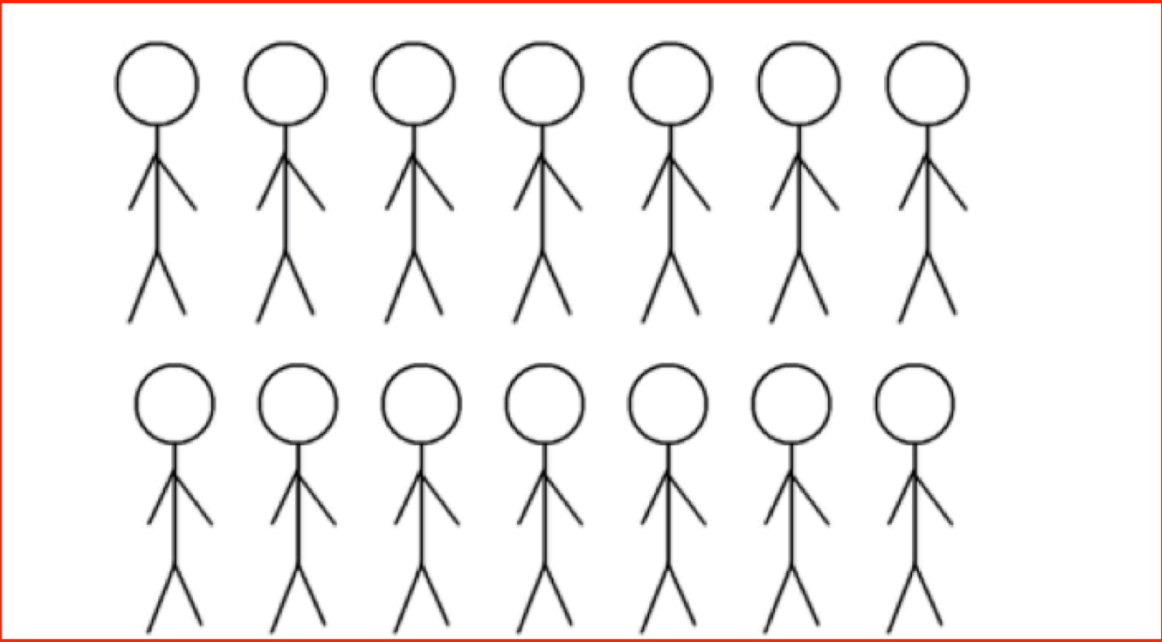
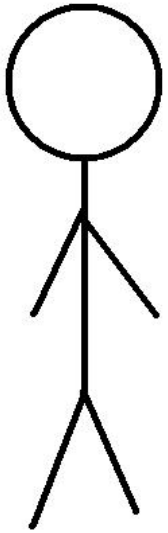
- ▶ Aims to change **attitudes, beliefs, and community values**



<https://vetoviolence.cdc.gov/violence-prevention-basics-social-norms-change>



# Example: Private Sexual Experiences vs. A Culture of Sexual Violence



## Polling Question

Which of the 5 Key Norms do you feel you have the most power to change to prevent violence?



# How can we have the biggest impact?

- ▶ Impacts the entire community
- ▶ Do not need to participate to be impacted
- ▶ Community-based DOES NOT EQUAL community-level





# #MeToo



# Economic supports



# Policy



<http://www.calcasa.org/2019/10/ya-basta-governor-newsom-signs-ab-547/>

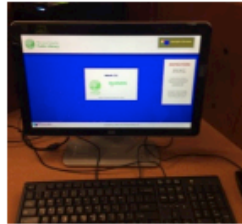


<http://www.preventconnect.org/2019/08/from-paid-leave-to-rent-stabilization-research-and-practice-on-strengthening-economic-security-for-violence-prevention/>

# Working with Communities, for Communities

## Environmental Level: Bloomington Inclusion Project

Waiting for the bus    Getting in the door at College Mall



## Youth Organizing for their Safety

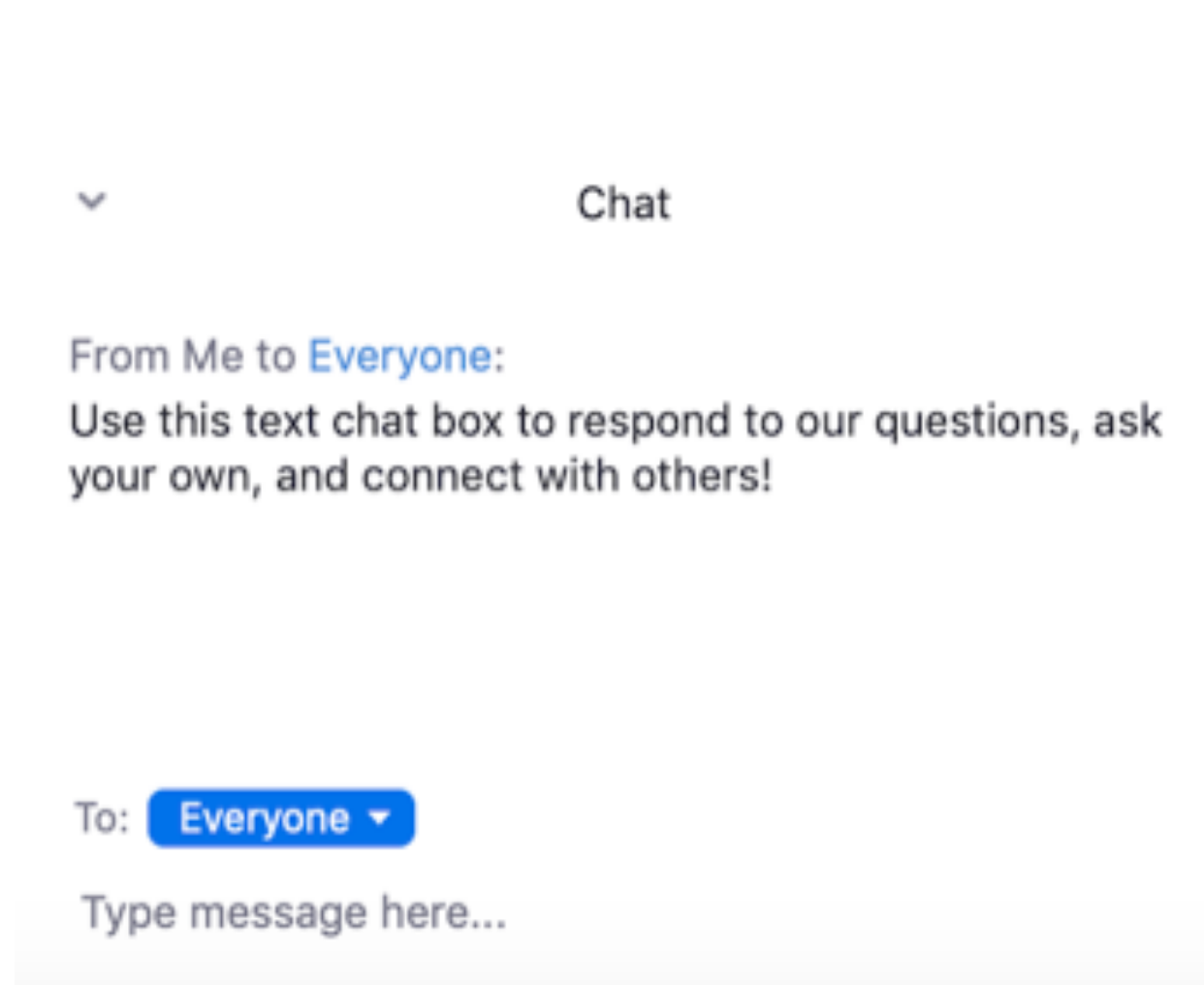


<http://www.preventconnect.org/2017/07/a-safe-place-to-call-home-transforming-the-physicalbuilt-environment-for-sexual-and-domestic-violence-prevention/>

<http://www.preventconnect.org/2019/01/mobilizing-and-organizing-communities-to-end-child-sexual-abuse-lessons-learned-from-the-just-beginnings-collaborative/>

What are you already doing to prevent violence in your communities? What are you excited to do to prevent violence in your communities?

Text Chat Question

A screenshot of a text chat interface. At the top left is a small downward arrow icon. To its right is the word "Chat". Below this is a message from "Me" to "Everyone": "Use this text chat box to respond to our questions, ask your own, and connect with others!". Below the message is a "To:" label followed by a blue button with the text "Everyone" and a small downward arrow. At the bottom is a text input field with the placeholder text "Type message here...".

▼ Chat

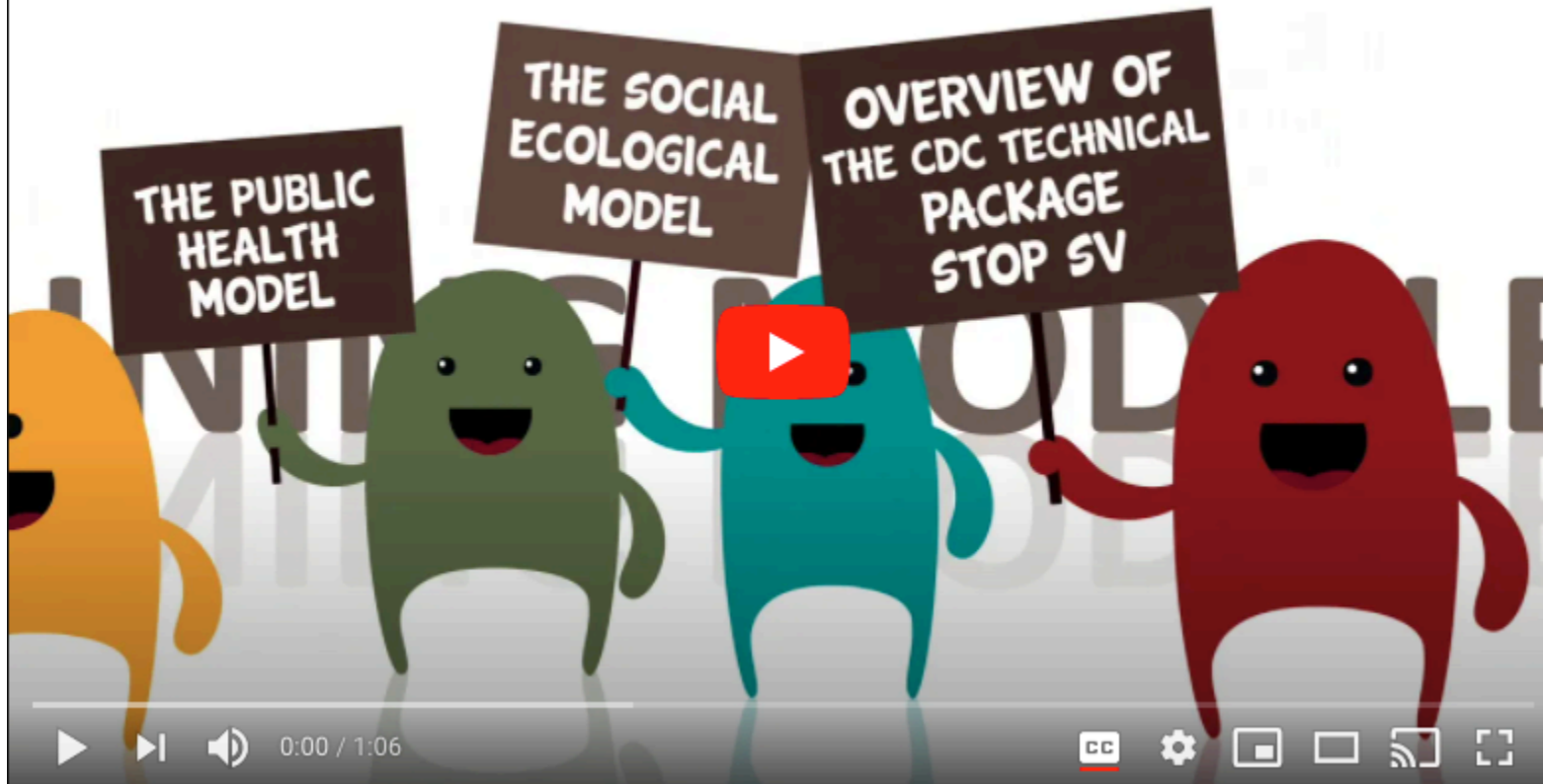
From Me to **Everyone**:

Use this text chat box to respond to our questions, ask your own, and connect with others!

To: **Everyone** ▼

Type message here...

# Resources



<https://campus.nsvrc.org/>

# eLearning

learn.preventconnect.org

<https://www.learn.preventconnect.org/>

NEW, SEASONED, OR NEEDING A REFRESHER

# Key Concepts, Models, & Frameworks Within the Field of Sexual & Domestic Violence Prevention



[http://  
www.preventconnect.org/  
2020/01/new-seasoned-  
or-needing-a-refresher-  
key-concepts-models-  
and-frameworks-within-  
the-field-of-sexual-and-  
domestic-violence-  
prevention/](http://www.preventconnect.org/2020/01/new-seasoned-or-needing-a-refresher-key-concepts-models-and-frameworks-within-the-field-of-sexual-and-domestic-violence-prevention/)





prevent  
connect

[PreventConnect.org](http://PreventConnect.org)

[info@PreventConnect.org](mailto:info@PreventConnect.org)

[PreventConnect.org/email](http://PreventConnect.org/email) – email group

[Learn.PreventConnect.org](http://Learn.PreventConnect.org) – eLearning

Follow Us

[twitter.com/PreventConnect](https://twitter.com/PreventConnect)

[facebook.com/PreventConnect](https://facebook.com/PreventConnect)