

Welcome, this web conference will begin soon



Cultivating Community
LEADERSHIP & POWER
WITHIN ECOSYSTEMS
FOR SAFETY

Thursday, January 26, 2023 | 11:00 AM PT/2:00 PM ET

Meet the PreventConnect Team



Ashleigh Klein-Jimenez

Director of Prevention
she/her/hers



Janae Sargent

Project Coordinator
they/them



prevent
connect

PreventConnect.org

info@PreventConnect.org

PreventConnect.org/email – email group

Learn.PreventConnect.org – eLearning

Follow Us

twitter.com/PreventConnect

facebook.com/PreventConnect

Rate and Review our Podcasts!



prevent connect
A ValorUS PROJECT

COMMUNITY ENGAGEMENT: Authenticity in Practice

Available on  



prevent connect
A ValorUS PROJECT



Digital Consent and Creating Safer Online Spaces:

SEXUAL ASSAULT AWARENESS & PREVENTION MONTH 2022

Available on  

PREVENTION IN SPORT

Highlights from new game-changing research



prevent connect
A ValorUS PROJECT

Available on  




prevent connect
A ValorUS PROJECT

Letting Youth Lead:

DIRECTIONS IN PREVENTION



Available on  



prevent connect
A ValorUS PROJECT

EMBRACING INTERSECTIONALITY:

2022 National Sexual Assault Conference Preview

Available on  

DISABILITY JUSTICE AND PRIMARY PREVENTION

Part 1 and 2 out now

Available on  



prevent connect
A ValorUS PROJECT

ROADMAP TO PREVENTION



Connecting Critical Race Theory and Anti-Oppression

prevent connect
A ValorUS PROJECT

Available on  



HIGHLIGHT REEL: Health Equity Approaches to Prevention

prevent connect
A ValorUS PROJECT

Available on  

DOMESTIC VIOLENCE AWARENESS MONTH 2022:



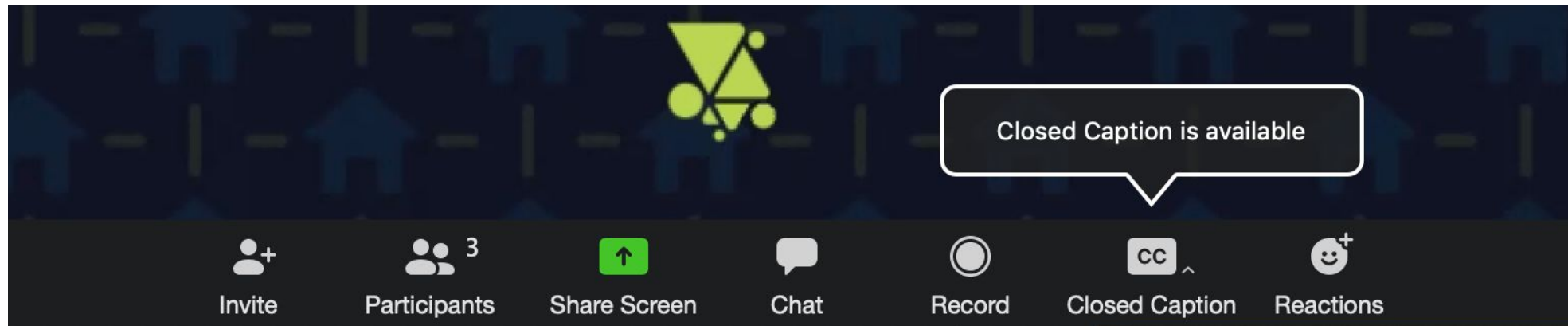
No Survivor Justice Without Racial Justice

prevent connect
A ValorUS PROJECT

Available on  

How to use Zoom

- ▶ Text chat
- ▶ PowerPoint Slides
- ▶ Polling Questions
- ▶ Phone
- ▶ Closed Captioning
- ▶ Web Conference Guidelines





Cultivating Community **LEADERSHIP & POWER** **WITHIN ECOSYSTEMS** **FOR SAFETY**

Session 2:

Thursday, January 26, 2023 | 11:00 AM PT/2:00 PM ET

PreventConnect is a national project of ValorUS sponsored by the U.S. Centers for Disease Control and Prevention. The views and information provided in this web conference do not necessarily represent the official views of the U.S. government, CDC or ValorUS.

PreventConnect

- ▶ Domestic violence/intimate partner violence
- ▶ Sexual violence
- ▶ Violence across the lifespan, including child sexual abuse
- ▶ Prevent before violence starts
- ▶ Connect to other forms of violence and oppression
- ▶ Connect to other prevention practitioners

Meet the Prevention Institute Team



Wil Crary

Associate Program Manager
he/him/his



Zachary Tarro

Program Coordinator
he/him/his



Lisa Fujie Parks

Associate Program Director
she/her/hers

Objectives

- ▶ Describe the value of an ecosystem approach for improving and sustaining collaborative, upstream efforts.
- ▶ Explore the need for community leadership and addressing power dynamics in ecosystems for safety.
- ▶ Hear from government practitioners working within ecosystems for safety that lift up community leadership and power-sharing.
- ▶ Learn about important skills and experiences to support participation in a thriving ecosystem for safety.

Agenda

- ▶ Session 1 recap
- ▶ Taking action within your power ecosystem
- ▶ Presentation: California Department of Public Health
 - ▶ Violence prevention priorities
 - ▶ Examples from initiatives
 - ▶ Community mobilization
- ▶ Q&A
- ▶ Skill-building breakout discussion
- ▶ Resources & closing

Chat warm up

Share a bit about your experiences navigating across silos.

- Recent success or challenge
- Pros and cons
- Tips and questions
- Reaction to this image



Image credit: NetworkWeaver

Framing the value of an ecosystem approach

Recapping session 1



In nature, we see so clearly how the healthiest ecosystems thrive in biodiversity. There are as many ways of being, growing, processing sunlight and rain into life as there are species.

No creature or plant in that healthy ecosystem functions as a monopoly, or as an individual. They make it as long and as far as they can grow together.



adrienne maree brown, **Disrupting the Pattern: A Call for Love and Solidarity**

(image by Freepik)



Ecosystem: it's everywhere!



<https://policy-practice.oxfam.org/resources/an-ecological-approach-to-partnership-611652/>

<https://2022.baltimoreinnovationweek.com/session/ecosystem-approach>

<https://buildingimpact.co/blog/an-ecosystem-approach-to-social-change-blog/>

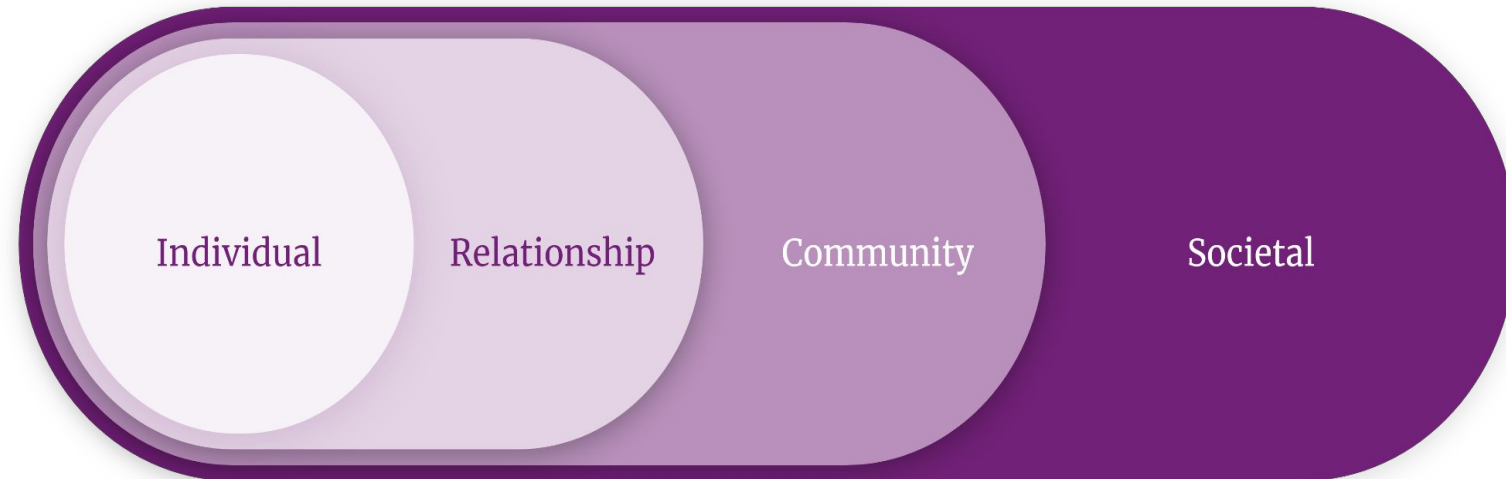
<https://horizonsproject.us/bridge-building-and-power-building-an-ecosystem-approach-to-social-change/>

<https://ydekc.org/wp-content/uploads/2018/03/Partnership-Ecosystem-Introduction.pdf>

Features of an ecosystem approach

- Orients us to **political, economic, physical, and cultural environments**
- Shift from understanding to **altering systems**
- Partnership with a **purpose orientation**
- **Addresses power dynamics**

How can we create value within the ecosystem?



<https://www.cdc.gov/violenceprevention/about/social-ecologicalmodel.html>



[Community power building] organizations **work within an ecosystem** of other community organizing groups and actors who offer a range of assets including research, advocacy, policy, and legal support **to build power** along multiple sectors and use diverse methods. For the ecosystem to be effective, ...experiences show that building and organizing a base or constituency is the heart of the work and therefore must be at the center.

Why Community Power Is Fundamental to Advancing Racial and Health Equity
(Vaidya, Poo, Brown, 2022)



6 elements of a power ecosystem framework

**Community &
Grassroots
Organizing**

**Shared Values &
Analysis**

Relationships

Infrastructure

Composition

Capacities

Power Flower- Participants in a Power Ecosystem

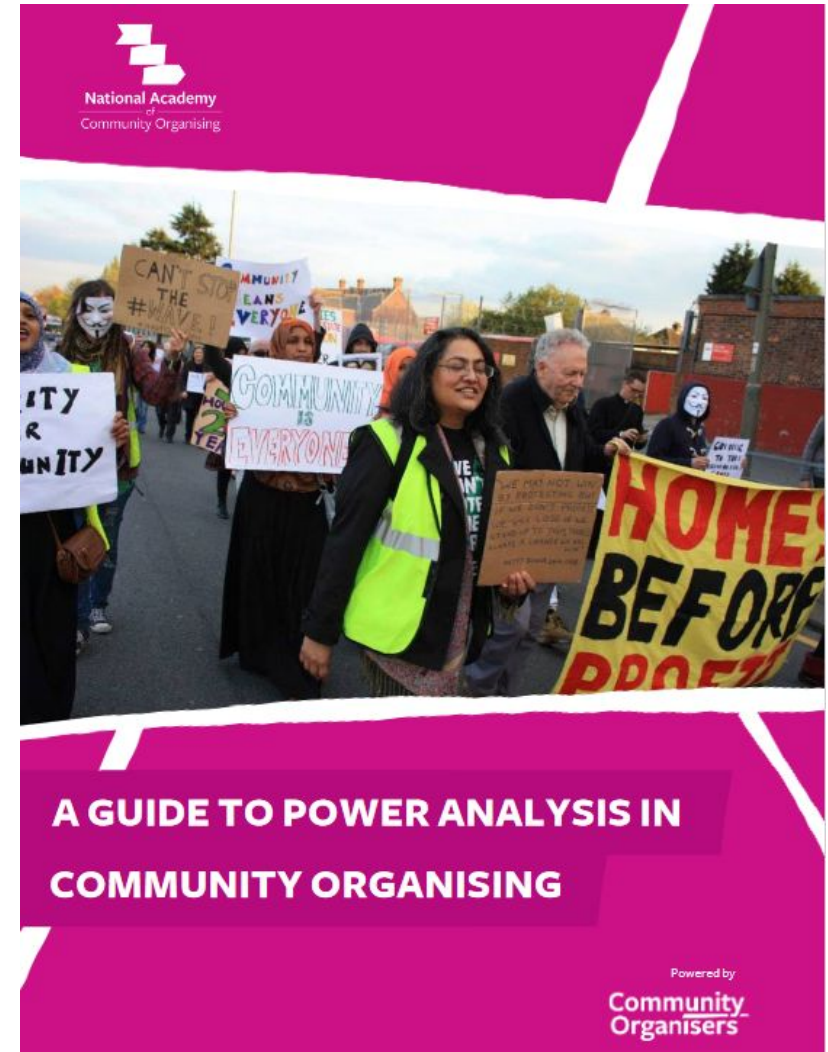


Power analysis

a tool and process for understanding where power sits to support action for shifting power

Steps

1. Identify your community
2. Create a list of orgs and individuals
3. Categorize your list
4. Fill in the gaps
5. Put names to positions
6. Research key individuals
7. Investigate organizations
8. Identify potential allies
9. Analyze potential opponents
10. Update and protect your power analysis



Session 1 guest presenter



Eona Harrison, PhD

Senior Research Associate
Metropolitan Housing and Communities
Policy Center, Urban Institute
She/her/hers

PASS: Promoting Adolescent Sexual Health and Safety

· · · · ·
· · · · ·
URBAN
· · · · ·
· · · · ·
I N S T I T U T E
· · · · ·
· · · · ·



Key Lessons Learned

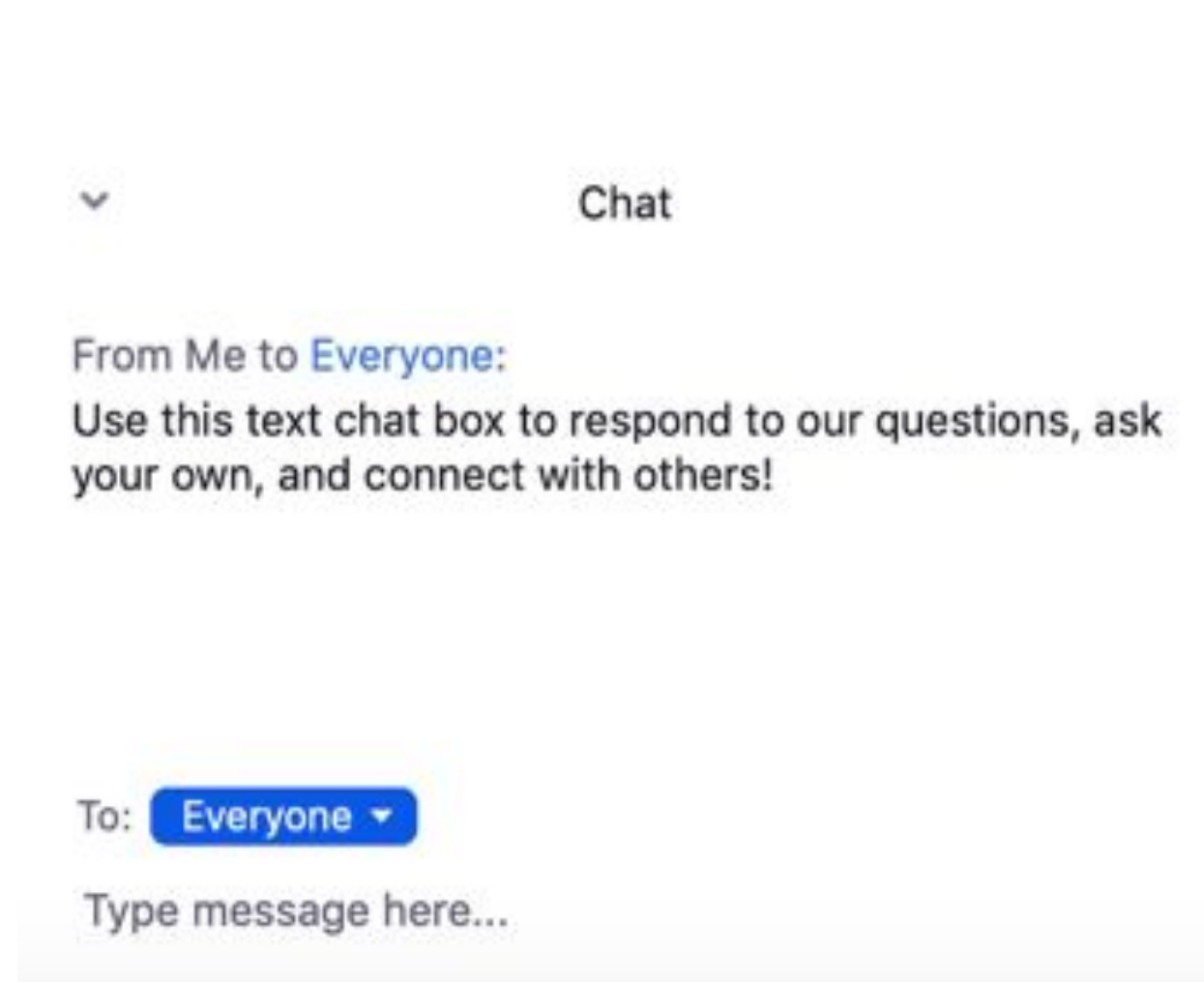
- Context: neighborhood or larger events shaped youth experience with PASS
- Value of employing community facilitators
- Allow for curriculum flexibility and trainings
- Provide TA around data collection and evaluation activities
- Invest time in creating meaningful partnerships beyond the task at hand



Text Chat Question

What stood out to you about the recap?

What are you curious to learn more about?



Taking action within your power ecosystem

Choice Points to Advance Racial & Gender Justice

- Choice points are decision-making opportunities that influence outcomes.
- The cumulative impacts of many small choices can be as significant as the impacts of big decisions.
- When we're conscious of choice points and the related impacts, we're less likely to replicate the status quo, and we open new possibilities for equitable change.

Choice Points and 3lb Weights (and then 5lb, 10lb, 20lb, etc.)



Choice Point Steps - can be practiced daily!

- 1. Identify a choice point:** What is a choice point in your work where you have some influence on a decision or course of action that may affect racial and gender justice outcomes?
- 2. Generate some options:** For that choice point, identify some alternative actions that could lead to more just outcomes.
- 3. Select a new course of action:** Decide which option could leverage the most racially and gender just change. Choose a “3-pound weight” action that you are confident you and your team have the capacity to “lift.” Which new course of action do you choose?
- 4. Supports and accountability:** What reminders, supports, and accountability practices can be structured into routines to keep racial and gender justice high priorities? What are your immediate next steps?

Meet the Speakers- California Department of Public Health (CDPH)



Enrica Bertoldo
Rape Prevention and
Education (RPE) Program
Coordinator,
CDPH Injury and Violence
Prevention Branch
She/her/hers



Elena Costa
Essentials for Childhood
Program Coordinator,
CDPH Injury and Violence
Prevention Branch
She/her/hers



Mina White, MPH
Research Scientist,
CDPH Injury and
Violence Prevention
Branch
She/her/hers





CULTIVATING COMMUNITY LEADERSHIP AND POWER WITHIN ECOSYSTEMS FOR SAFETY: EXAMPLES FROM CALIFORNIA DEPARTMENT OF PUBLIC HEALTH (CDPH) VIOLENCE PREVENTION PROGRAMS

PreventConnect Web Conference
January 26, 2023

Mina White, Enrica Bertoldo, and Elena Costa
California Department of Public Health (CDPH)
Injury and Violence Prevention Branch



CDPH Injury and Violence Prevention Branch (IVPB)

Violence Prevention Programs

Rape Prevention and Education (RPE) Program

Essentials for Childhood (EfC) Initiative

All Children Thrive, California (ACT-CA)

Violence Prevention Initiative (VPI)

California Violent Death Reporting System

Domestic Violence Training and Education Program (DV)

Teen Dating Violence Prevention (TDV)

Suicide Prevention Programs



IVPB Violence Prevention Priorities



Economic Security and Mobility

Protective Environments

Community Leadership and Engagement

Child and Youth Development

Leadership for Women, Girls, and Gender Expansive People

6 Elements of a Power Ecosystem Framework



Government's Role in Supporting Community Leadership and Power

Community Organizing:

Provide funding for community-led work

Infrastructure and Relationships:

Convene coalitions, promote partnerships

Capacities:

Promote and educate on best practices involving communities, provide Technical Assistance

Shared Values/Analysis:

Disseminate statewide data and incorporate community voice into decision-making



Community Leadership

Examples at the Local Level

- Environmental Scan Findings for Leadership for Women/Girls
- Community mobilization projects
- All Children Thrive Coalitions
- Reimagining Child Wellbeing





Opportunities to Empower and Support Girls and Women in California

An Environmental Scan of Leadership and Economic Supports to Prevent Sexual Violence, Domestic Violence, and Teen Dating Violence



Challenges to Leadership for Women/Girls

- Sexism, racism, and transphobia in leadership-existing power structures
- One-time leadership investments



Leadership Strategies for Women/Girls



Recruitment Practices

Tiered Leadership Development

Healing & Addressing Trauma

Participatory Approaches to Leadership



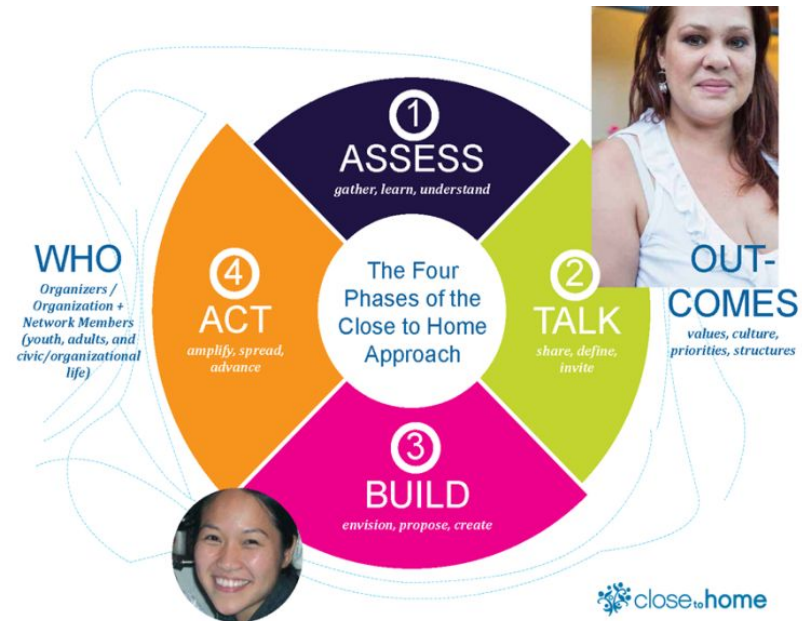


Key Finding

- Tendency to partner with similar organizations
- Explore multi-sector partnerships pertaining to identified challenges
- Coalitions may need to consider building their own collective power within sector due to power imbalances when working across sectors

Community Mobilization

- Centering community leadership and building a network of people to act together
- Community-driven campaigns, actions, or policies through youth and adult leaders/organizing teams/networks across 4 phases of the Close to Home approach



Community Mobilization

- Alliance for Community Transformations Project

COMMUNITY BEAUTIFICATION PROJECT 2021

"A single act of kindness throws out roots, and the roots spring up and make new trees."
-Amelia Earhart



All Children Thrive, California (ACT) Initiative



ACT intends to fund and engage with up to 30 jurisdictions in California by 2026



Goals of All Children Thrive, California

Shape Perspectives

- Help jurisdictions understand the role of public health in addressing child well-being and how to co-design a model with community members

Innovate through Collaboration

- Jurisdictions network with each other to share, learn and create innovative solutions

Shift Power

- Embed community voices into policy, planning and development of cross-sector systems improvement

Sustainable Change

- Support community efforts to pass policies that improve the lives of children and prevent adversity to transform systems and environments so All Children Thrive



AUGUST 2022

Reimagining Child Wellbeing: Local Policy Strategies to Prevent and Reduce Adverse Childhood Experiences (ACEs) in California's Communities



All Children Thrive
California



Community Leadership/Partnership Infrastructure Examples at State Level

- EfC Initiative Coalition and Subcommittees
- RPE Advisory Group
- State Level Collaborative
- Center for Healthy Communities
Workgroups to promote shared vision
- Shared data on community resilience



Essentials for Childhood (EfC) Initiative



V

Vision

All California children, youth and their families thrive in safe, stable, nurturing relationships and environments.



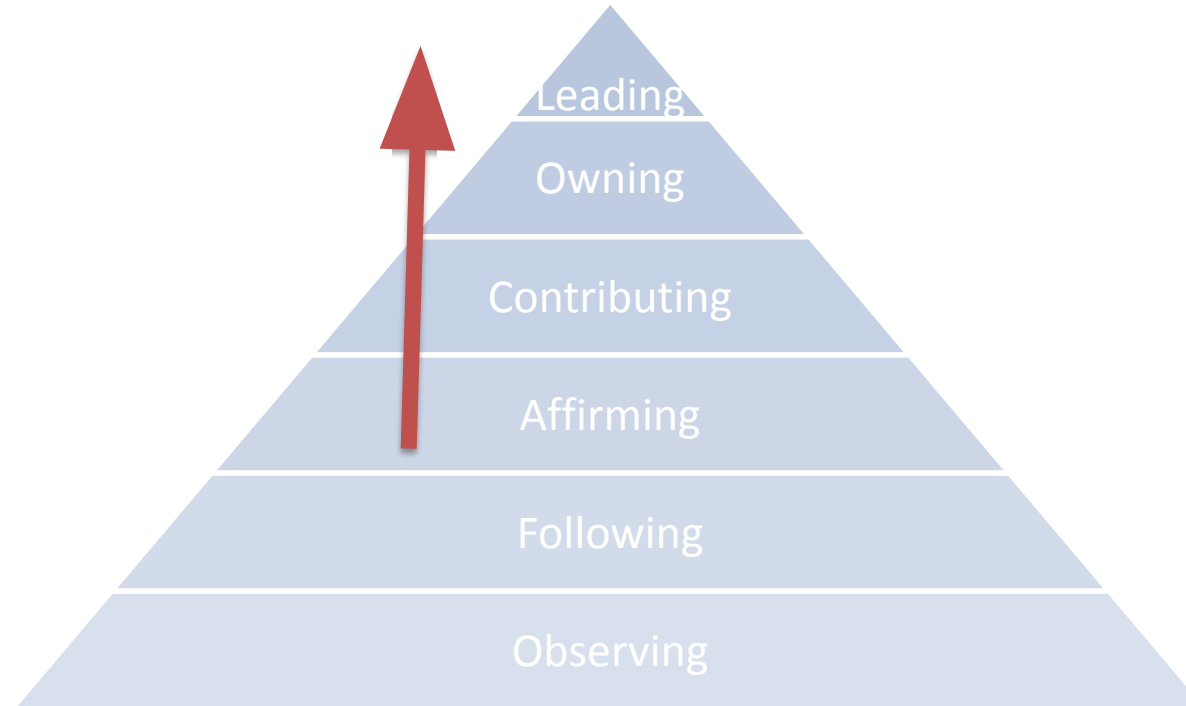
M

Mission

To develop a common agenda across multiple agencies and stakeholders to align activities, programs, policies and findings so that all California children, youth and their families have safe, stable, nurturing relationships and environments.



The CA EfC Initiative Focuses on Coalition Engagement



Essentials for Childhood (EfC) Initiative



Backbone Agencies:

California Department of Public Health &
California Department of Social Services



Essentials for Childhood Initiative: Coalition

Subcommittee:
Equity



Subcommittee:
Trauma-Informed
Practices



Subcommittee:
Data



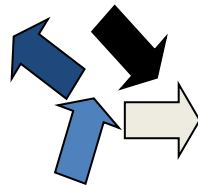
Subcommittee:
Policy/
Strengthening
Economic Supports



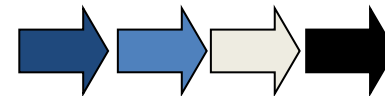
The CA EfC Initiative Utilizes a Collective Impact Model

- All partners aim to work towards the **same goal** and **measure the same things**
- **Cross-sector** alignment
- **Organizations** actively **coordinate** their action and sharing lessons learned
- Seek to achieve **positive and consistent progress at scale**

Isolated Impact



Collective Impact



Center for Healthy Communities
Injury and Violence Prevention Branch

Center for Healthy Communities
Injury and Violence Prevention Branch

RPE Advisory Group

- ValorUS
- UC San Diego, Center on Gender Equity and Health
- CA Partnership to End Domestic Violence
- Prevention Institute
- Alliance for Girls
- California Commission on Status of Women and Girls
- Alliance for Boys and Men of Color
- CDPH, Office of Health Equity
- CDPH, Essentials for Childhood Initiative
- CDPH, Violence Prevention Initiative
- Strength United
- Community Solutions
- Center for the Pacific Asian Family
- Human Response Network
- YWCA Silicon Valley
- Alliance for Community Transformations
- Black Women Revolt
- El Sol Neighborhood Educational Center
- University of San Diego
- Standing Together to End Sexual Assault



CA State Level Collaborative

Domestic Violence, Sexual Violence, and Teen Dating Violence
Prevention



VALORUS >

Advancing Equity. Ending Sexual Violence.



Building Capacities: State Level

- **Training/TA:** Building skills of community organizers (staff) and leaders (adults and youth)
- **Community of Practice:** Peer-to-peer sharing on best practices and lessons learned
- **Peer Coaches:** Youth and adults identified to build leadership skills at state level (mentoring, stipends).



Shared Vision for Healthy and Resilient Communities

Strengthen the Public Health Infrastructure, Leadership and Workforce

Facilitate programmatic alignment through the coordination, collaboration, and integration of resources.

Invest in the public health workforce.

Build Community Wealth

Apply an equity lens and integrate health into policies, programs, and decision-making across sectors.

Address inequities by directing resources to the communities with the greatest need.

Expand Data Access, Usability and Shared Indicators

Apply an equity lens to identify shared key indicators of a healthy and resilient community and address data needs.

Communicate data through a community-centric perspective to inform policy, programs, and decision-making.

Data to Support Community Resilience

- Community Resilience Data Dashboard
- Indicators based on shared risk and protective factors
- Community-level indicators
- Social determinants of health – data on conditions of where we live, work, and play
- “Hard” data and community input



Audience Question

- How have states with CDC-funded projects successfully collaborated with other CDC funded projects?



Thank you!

Additional questions? Please contact:

[Enrica Bertoldo, M.A.](#)

Enrica.Bertoldo@cdph.ca.gov

Rape Prevention and Education Program Coordinator
Injury and Violence Prevention Branch
California Department of Public Health

[Elena Costa](#)

Elena.Costa@cdph.ca.gov

Essentials for Childhood Initiative Program Coordinator
Injury and Violence Prevention Branch
California Department of Public Health

[Mina White, M.P.H.](#)

Mina.White@cdph.ca.gov

Rape Prevention and Education Program Evaluator
Injury and Violence Prevention Branch
California Department of Public Health



Audience Q&A

Please share your questions in the chat



Chat

From Me to **Everyone**:

Use this text chat box to respond to our questions, ask your own, and connect with others!

To: **Everyone** ▼

Type message here...

Q&A

- ▶ What advice do you have for other public agencies who haven't typically located themselves within a power ecosystem?
- ▶ What were some critical choice points in the programs you've shared relating to power dynamics?
- ▶ Questions from the audience



Skill-building breakout discussion

Maintaining a thriving power ecosystem

- **Shared values and analysis** often bring organizations together around a shared purpose.
- **Transformational relationships** rather than transactional ones form around shared interest, collaboration, and trust in addressing community priorities. Transformational relationships are more successful in keeping organizations within the ecosystem together.
- **Grassroots organizing groups** are a critical component of ecosystems as they are often hubs for multi-issue and multi-racial community-based networks. These groups help create advocates out of those most impacted within systems of oppression and create greater opportunities for policy and systems change work.
- **Adaptive capacity**—the ecosystem's ability to anticipate, absorb, and respond to external conditions and exogenous shocks—was critical to its ability to leverage and build on losses.

Breakout groups

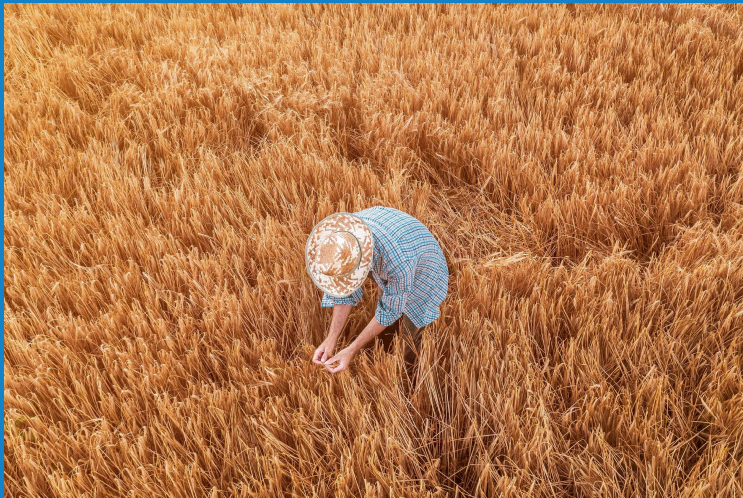
Overview

- ▶ 3-4 people per breakout
- ▶ 10 min
- ▶ Informal discussion! We encourage introductions, stories, and whatever brings the topic to life.
- ▶ Each of us is an expert – share your expertise.
- ▶ Harvest

Guiding questions

- ▶ What power dynamics exist within your ecosystem?
- ▶ Thinking about your work and partners, what skills and actions have resulted in power analysis, power sharing, and power building between agencies and community?

Breakout discussion harvest



- ▶ What lessons can you bring back to your organization from this discussion?
- ▶ What more are you hoping to learn about?
- ▶ What energized you about this conversation?

Tools & Resources

- ▶ **Centers for Disease Control & Prevention-** [The Social-Ecological Model](#)
- ▶ **Bay Area Regional Health Inequities Initiative-** [Conceptual Framework](#)
- ▶ **Incite!-** [Beyond the Non-Profit Industrial Complex](#)
- ▶ **Stanford Social Innovation Review-** [Cultivate Your Ecosystem](#)
- ▶ **National Academy of Medicine-** [Why Community Power is Fundamental to Advancing Racial and Health Equity](#)
- ▶ **Community Organisers-** [A Guide to Power Analysis in Community Organising](#)
- ▶ **Restorative Justice Project-** [Resource Guide to Power](#)
- ▶ **adrienne maree brown-** [Disrupting the Pattern: A Call for Love and Solidarity](#)

Tools & Resources, continued

- ▶ **NetworkWeaver-** [Mapping System Shifting Networks](#)
- ▶ **Center for the Study of Social Policy & The California Endowment-** [An Ecosystem to Build Power and Advance Health and Racial Equity](#)
- ▶ **USC Program for Environmental and Regional Equity-** [California Health and Justice for All Power-Building Landscape: Defining the Ecosystem](#)
- ▶ **Race Forward-** [An Introduction to Racial Equity Assessment Tools](#)
- ▶ **Robert Wood Johnson Foundation-** [Lead Local Initiative](#)
- ▶ **The Management Center-** [Using Choice Points to Advance Racial Equity and Inclusion](#)



prevent
connect



PreventionInstitute.org

prevent@preventioninstitute.org

Follow Us

twitter.com/preventioninst

facebook.com/PreventionInstitute.org

PreventConnect.org

info@PreventConnect.org

PreventConnect.org/email – email group

Learn.PreventConnect.org – eLearning

Follow Us

twitter.com/PreventConnect

facebook.com/PreventConnect

<https://www.cdph.ca.gov/>

Follow Us

<https://twitter.com/CAPublicHealth>

<https://www.facebook.com/CAPublicHealth/>