

Welcome,
This Web Conference
Will Begin Soon



A Project of



All Communities are Not Created Equal:
Advancing health equity goals to enhance sexual
and domestic violence prevention efforts

PreventConnect
1215 K Street
Suite 1850
Sacramento CA
95814

Website: preventconnect.org

Email: info@preventconnect.org

Email Group:

preventconnect.org/email-group

eLearning: learn.preventconnect.org

Wiki: wiki.preventconnect.org



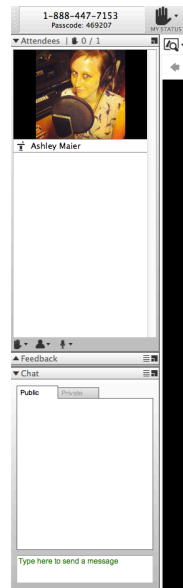
preventconnect.org/Facebook
preventconnect.org/Twitter
preventconnect.org/Flickr



preventconnect.org/YouTube
preventconnect.org/LinkedIn
preventconnect.org/Pinterest



How to use this technology



- Raise hand
- Text chat & private chat
- PowerPoint slides
- Polling questions
- Phone
- Closed captioning
- Web conference guidelines

Please send a private chat message for help.

Call iLinc Technical Support at 800.799.4510.

PreventConnect is a national project of the California Coalition Against Sexual Assault sponsored by U.S. Centers for Disease Control and Prevention. The views and information provided in this web conferences do not necessarily represent the official views of the U.S. government, CDC or CALCASA.



2014 Web Conferences

Joining our fellow travelers: Practical applications for expanding the impact of sexual & domestic violence prevention efforts

March 25: **Foundations in Prevention**

April 24: **Growing Our Impact: Moving from individual awareness building to community norms change strategies as a part of sexual and domestic violence prevention efforts**

May 21: **Public Sector Partnerships: The role of local government in sexual and domestic violence prevention initiatives**

★ June 26: **All Communities are Not Created Equal: Advancing health equity goals to enhance sexual and domestic violence prevention efforts**

September 17: **Shifting our Goal from Individual Knowledge Change to a Community Mobilized for Norms Change: What does it take to move from a skills building focus to practice and policy change success?**



Ending Child Sexual Abuse

#PowerInPrevention
Ending Child Sexual Abuse Web Conference Series



- Thursday, July 18: **Faith Communities Engaged in Ending Child Sexual Abuse**
- Tuesday, Sept 17: **Secret Survivor’s Tools for Strengthening your Prevention Efforts**
- Tuesday, Oct 15: **Power of Organizational Practices: Innovations to Keep Kids Safer**
- Thursday, Nov 14: **Statute of Limitations and Its Connection to Prevention**
- Thursday, Jan 16, 2014: **Child Sexual Abuse and Disabilities**
- Thursday, March 13, 2014: **Telling our Stories: Learning as We Build a Movement**



Next Peer Learning Forum

Better multi-sector partnerships: What does it really take to work across sectors to prevent sexual and domestic violence?

August 2014

July 2014

| Sunday | Monday | Tuesday | Wednesday | Thursday | Friday | Saturday |
|--------|--------|---------|-----------|----------|--------|----------|
| | | 1 | 2 | 3 | 4 | 5 |
| 6 | 7 | 8 | 9 | 10 | 11 | 12 |
| 13 | 14 | 15 | 16 | 17 | 18 | 19 |
| 20 | 21 | 22 | 23 | 24 | 25 | 26 |
| 27 | 28 | 29 | 30 | 31 | | |

| Sunday | Monday | Tuesday | Wednesday | Thursday | Friday | Saturday |
|--------|--------|---------|-----------|----------|--------|----------|
| | | | | | 1 | 2 |
| 3 | 4 | 5 | 6 | 7 | 8 | 9 |
| 10 | 11 | 12 | 13 | 14 | 15 | 16 |
| 17 | 18 | 19 | 20 | 21 | 22 | 23 |
| 24 | 25 | 26 | 27 | 28 | 29 | 30 |
| 31 | | | | | | |



PreventConnect

- Domestic violence/intimate partner violence
- Sexual violence
- Violence across the lifespan
- Prevent before violence starts
- Connect to other forms of violence & oppression
- Connect to other prevention practitioners



**All Communities are Not Created Equal:
Advancing health equity goals to enhance sexual
and domestic violence prevention efforts**

June 26, 2014

11am-12:30pm PT; 2pm-3:30pm ET

About the Presenters



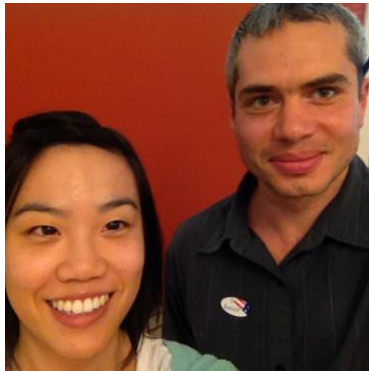
Annie Lyles
Program Manager
Prevention Institute



Sandra Viera
Program Manager
Prevention Institute



About the Webtechs



Casey Tran
Program Assistant
Prevention Institute

Will Haar
Program Coordinator
Prevention Institute



Learning Objectives

By the end of the web conference, participants will be able to:

- Describe a **health equity approach** and identify at least one **health equity issue** relevant to their existing efforts.
- Discuss **barriers to equity** within their work.
- Identify **prevention strategies** that work to prevent sexual and domestic violence and promote health equity.

Prevention
Institute
Prevention and equity at the center of community well-being



Prevention

a **systematic** process that promotes healthy environments and behaviors and reduces the likelihood or frequency of an incident, injury or condition occurring.

Primary Prevention

taking action before sexual and domestic violence occurs.

Prevention
Institute
Prevention and equity at the center of community well-being



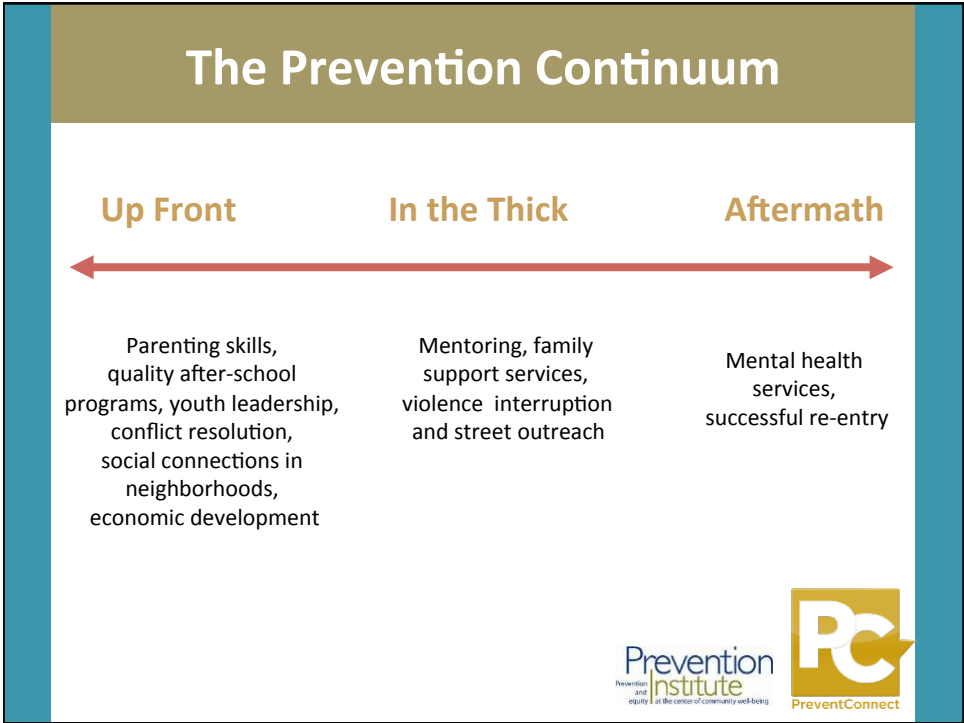
What can be done to prevent the problem from occurring

in the first place?



The Prevention Continuum







Please Answer the Polling Question

How much do you know about health equity?

- A. I am new to the topic
- B. I could use the term in a sentence
- C. I could explain it to someone at a party
- D. I could explain it at a conference



Approaches to SDV

- Feminist Perspective
- Human Rights Perspective
- Public Health Perspective
- Social Justice Perspective

Prevention
institute
Prevention and equity at the center of community well-being



What is Health Equity?

- Attainment of the highest level of health for all people
- Achieving HE requires valuing everyone equally with focused and ongoing societal efforts to address avoidable inequalities, historical and contemporary injustices, and the elimination of health and health care disparities




Source: *A Practitioner's Guide for Advancing Health Equity*

Prevention
institute
Prevention and equity at the center of community well-being



Violence Damages Health


| | | |
|-----------|--------|--------------|
| Physical | Sexual | Reproductive |
| Emotional | Mental | Social |



Health Equity

Health Equity works in direct response to “isms” such as:

| | | |
|----------|--------------|-----------|
| | Ageism | Racism |
| Classism | | |
| | Cisgenderism | Heteroism |
| Ableism | Sexism | |

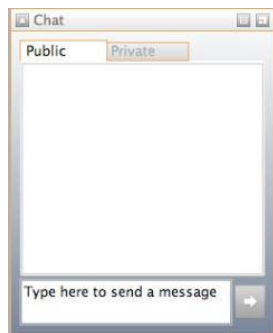


What would you expect to see in a health equity approach?

Prevention
institute
Prevention and equity at the center of community well-being



Text Chat Question



What would you expect to see in a health equity approach?

Prevention
institute
Prevention and equity at the center of community well-being

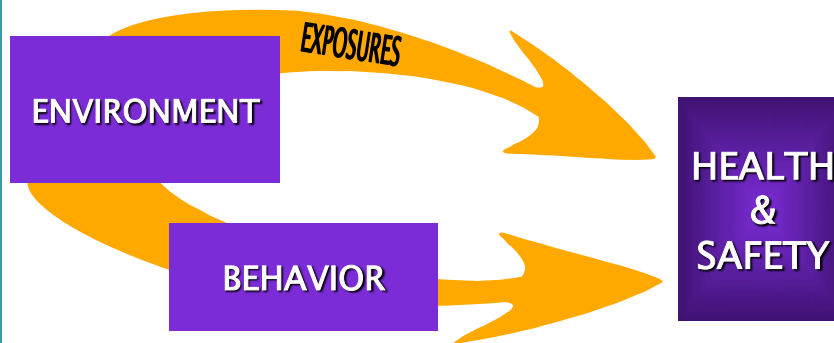


Please Answer the Polling Question

How are health equity approaches a part of your work?

- A. Not currently using
- B. Unsure or don't know
- C. Some aspects
- D. It is our primary approach

Prevention
Institute
Prevention and equity at the center of community well-being



Prevention
Institute
Prevention and equity at the center of community well-being





Key Norms

- Culture of Violence
- Narrow Definitions of Masculinity
- Limited Roles for Women
- Power & Control
- Privacy & Silence

Prevention
and
equity | Institute
at the Center of Community Well-Being

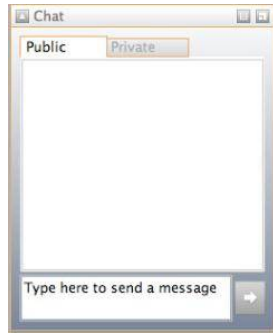


**How can a health equity
approach improve our work?**

Prevention
and
equity | Institute
at the Center of Community Well-Being



Text Chat Question



How can a health equity approach improve our work?



Health Equity Can Improve Our Work

- Better outcomes
- Increased partnerships and reach



About our Guest

Native Alliance Against Violence

www.oklahomanaav.org



Dawn Stover
Executive Director

Prevention
institute
Prevention and equity at the center of community well-being



About our Guest

The PolicyLink Center for Health Equity and Place

www.policylink.org



Dalila Butler
Senior Associate

Prevention
institute
Prevention and equity at the center of community well-being



“Violence is not a rare event that happens to only a few highly vulnerable women and girls. It is a crisis that can happen to any woman and any girl, and it happens too often too far too many.”

Prevention
and
equity | Institute
at the Center of Community Well-Being



DV Disparities from AG Task Force

“Children and families in tribal communities, and others in rural or urban settings who live with poverty or discrimination because of their race, culture or language, sexual orientation, or mental or physical disabilities, have experienced decades and generations of exposure to violence and extreme psychological trauma.

They require special attention, and they must receive it.”

Source: Report of the Attorney General’s National Task Force on Children Exposed to Violence

Prevention
and
equity | Institute
at the Center of Community Well-Being





Prevention
and
equity | at the center of community well-being
Institute



Source: PolicyLink.org.
Please do not use without permission.

Prevention
and
equity | at the center of community well-being
Institute



Health Equity: Considerations

- ✓ Build organizational practices that support equity
- ✓ Have the community involved- and lead!
- ✓ Partner and collaborate for health equity
- ✓ Integrate health equity goals into evaluation

Source: *A Practitioner's Guide for Advancing Health Equity*

Prevention
and
equity | Institute
at the Center of Community Well-Being



Build organizational practices
that support equity

Prevention
and
equity | Institute
at the Center of Community Well-Being





Everyone thinks of changing the world, but no one thinks of changing himself

Photo by Red Dirt Road Photography

— Leo Tolstoy



Build Organizational Practices that Support Equity

| | | |
|--|------------------------------|---|
| Institutional Commitment | Alignment with Funding | Deliberate Hiring and Recruitment Practices |
| Track and Capture HE in Training and Performance Plans | HE in Services and Resources | Establish Diverse Collaborations |



Source: *A Practitioner's Guide for Advancing Health Equity*

Prevention
Institute
Prevention and equity in the context of community well-being



Campus Leadership Program



Prevention
Institute
Prevention and equity at the center of community well-being



Prevention
Institute
Prevention and equity at the center of community well-being





Prevention
and
equity | Institute
at the Center of Community Well-Being



Have the community involved
- and lead!

Prevention
and
equity | Institute
at the Center of Community Well-Being



Community Engagement *and* Leadership is Key

“Community participation, when it’s real, is your main investment in accountability. It’s your main investment in sustainability...community participation is when, truly, you involve people in creating a mechanism for themselves to define change.”

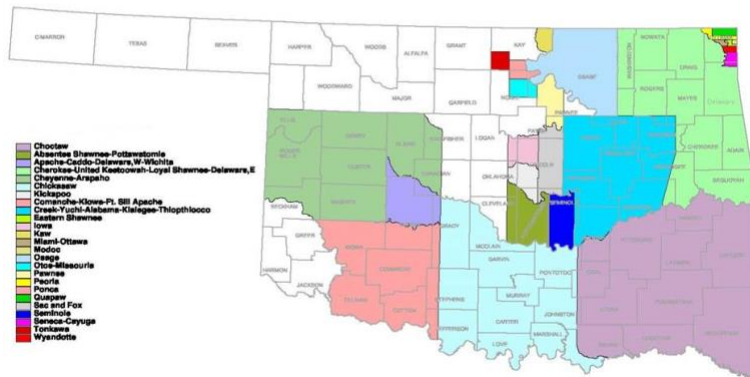


- America Bracho, Executive Director,
Latino Health Access

Prevention
institute
Prevention and equity at the center of community well-being



NATIVE ALLIANCE AGAINST VIOLENCE



Prevention
institute
Prevention and equity at the center of community well-being





Source: PolicyLink.org.
Please do not use without permission.

Prevention
institute
Prevention and equity at the center of community well-being



Moving from Culturally Reflective to Culturally Reflexive

Prevention
institute
Prevention and equity at the center of community well-being



Assessing Opportunities for Community Engagement

- ❑ Am I aware of how my agency/coalition is perceived within the community?
- ❑ How we gone beyond informing community to creating opportunities for leadership?
- ❑ Am I aware of past similar projects in the community? Were they overall positive or negative experiences for the community?

Source: *Making Healthy Places: Designing and Building for Health, Well-Being, and Sustainability*

Prevention
and
equity | Institute
at the center of community well-being



Assessing Opportunities for Community Engagement

- ❑ Does the project include an information feedback-loop so that the community can learn how their voices were heard and included?
- ❑ Does my project have a mechanism to include community-based data in the planning?

Source: *Making Healthy Places: Designing and Building for Health, Well-Being, and Sustainability*

Prevention
and
equity | Institute
at the center of community well-being



Partner and collaborate for health equity

Prevention
and
equity | **institute**
at the Center of community well-being



Partner and Collaborate for Health Equity

- What partners are missing in our network/
coalition that should be included?
- How can we ensure that all partners meaningfully
participate and influence decision making?
- What is each partner's role in addressing health
equity?

Source: *A Practitioner's Guide for Advancing
Health Equity*

Prevention
and
equity | **institute**
at the Center of community well-being



Partner and Collaborate for Health Equity

- How can we strengthen our commitment to health equity through communications and messaging?
- How do our partners' commitment to health equity translate into identifiable and measurable activities?

Source: *A Practitioner's Guide for Advancing Health Equity*

Prevention
and
equity | Institute
at the Center of Community Well-Being



Designing for Reproductive Justice

PARSONS
THE NEW SCHOOL
FOR DESIGN

www.NewschooL.edu/parsons



Ms. FOUNDATION
FOR WOMEN

Forwomen.org

Prevention
and
equity | Institute
at the Center of Community Well-Being



National Conference on Health and Domestic Violence



March 19-21, 2015 | Washington, DC
www.futureswithoutviolence.org/nchdv



National Conference on Health and Domestic Violence

Call for Abstracts

Online abstract submission opens **April 21, 2014**

Deadline for submissions is **June 27, 2014**

The National Conference on Health and Domestic Violence provides valuable professional education on the latest health research, practice, policy, prevention and advocacy responses to domestic and sexual violence (D/SV) in the U.S. and around the world.

March 19-21, 2015 Renaissance Washington, DC Downtown Hotel

For more information and to submit an abstract, go to:
www.futureswithoutviolence.org/nchdv

Who should submit: advocates for survivors of domestic/sexual violence, health policy leaders, health professional students, mental and behavioral health providers, nurses, nurse midwives, physicians, physician assistants, dentists, researchers, evaluators, social workers, survivors, other health care providers and allied professionals

© 2014 Futures Without Violence. All Rights Reserved.

The National Health Resource Center on Domestic Violence is primarily funded by a grant from the Family Violence Prevention & Services Program, Family & Youth Services Bureau, Administration for Children and Families, U.S. Department of Health and Human Services.



DV Disparities from AG Task Force

Involve men and boys as critical partners
in preventing violence.

Source: Report of the Attorney General's National
Task Force on Children Exposed to Violence

Prevention
institute
Prevention and equity at the center of community well-being



Prevention
institute
Prevention and equity at the center of community well-being



Integrate health equity goals into evaluation

Prevention
and
equity | at the center of community well-being
institute



Integrate Health Equity Goals into Evaluation

“Unless there is a deliberate intention to address health inequalities and to build up evaluations that purposefully use equity as a value criterion, the field of health promotion may go astray regarding its underlying commitments to equity in health.”

-Louise Potvin, Universite de Montreal

Prevention
and
equity | at the center of community well-being
institute

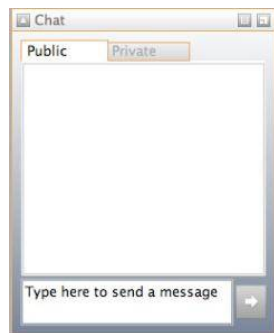




Prevention
and
equity | at the center of community well-being
institute



Text Chat Question



What might you measure in a health equity approach?

Prevention
and
equity | at the center of community well-being
institute



Hardy Girls Healthy Women

Lyn Mikel Brown
lmbrown@colby.edu
www.hghw.org

Prevention
Institute
Prevention and equity at the center of community well-being



- ✓ The desire to be heard and taken seriously
- ✓ An ordinary courage: "to speak one's mind with all one's heart" (Rogers, 1993);
- ✓ The capacity to name and get "really mad" at unfairness, hurt;
- ✓ The desire for genuine connection
- ✓ The potential to work together

STARTING WITH GIRLS' RELATIONAL STRENGTHS AND HEALTHY RESISTANCE

Material taken from Lyn Mikel Brown,
Hardy Girls Healthy Women

Prevention
Institute
Prevention and equity at the center of community well-being



Hardiness is...

A way of talking about risk and resilience that moves beyond an individual girl's problems, her "odds-defying" behavior, or even her need for "one caring adult, to focus on the **relational, social, and cultural context** she needs to grow and thrive; i.e., to help her see and realize the *opportunities*.

Material taken from Lyn Mikel Brown,
Hardy Girls Healthy Women

Prevention
Institute
Prevention and equity at the center of community well-being



"This soil is bad for certain kinds of flowers. Certain seeds it will not nurture, certain fruit it will not bear, and when the land kills of its own volition, we acquiesce and say the victim had no right to live."

- Toni Morrison, *The Bluest Eye*



cc.sburke2478

Prevention
Institute
Prevention and equity at the center of community well-being



When The Soil is Rich

- ❑ Girls are encouraged to name **the problems, and demand change**
- ❑ Girls work together to seek out solutions that affirm who they are and strengthen connections
- ❑ Girls are provided with safe spaces and the necessary tools **to think critically about themselves, the world, and their place in it.**

Tracy Robinson, Janie Victoria Ward, 1991.

Material taken from Lyn Mikel Brown,
Hardy Girls Healthy Women

Prevention
Institute
Prevention and equity at the center of community well-being



Cultivating Hardiness Through Coalition-Building and Activism



1. Bring a diverse collection of girls together;
2. Teach adults to be muses;
3. Develop critical thinking skills;
4. Scaffold girls' work;
5. Know when to get out of the way.

Material taken from Lyn Mikel Brown,
Hardy Girls Healthy Women

Prevention
Institute
Prevention and equity at the center of community well-being





Prevention
institute
Prevention and equity at the center of community well-being



Source: PolicyLink.org.
Please do not use without permission.

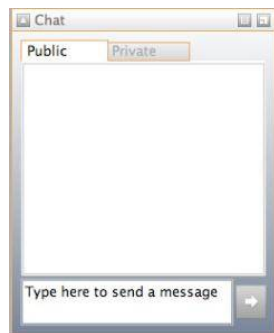
Prevention
institute
Prevention and equity at the center of community well-being



“I wanted to do this for my life’s work...
We need to step out and be ourselves
and express ourselves, be true to
ourselves. I can retire knowing we made
a huge impact and changed who is
listened to. We need to switch thinking
that this is possible, that we can do this.”
–Mentor



Text Chat Question



What is sticking with
you right now?
What else do we need
to talk about?



Tools



www.preventioninstitute.org/tools

Prevention
Institute
Prevention and equity at the center of community well-being



Sexual Violence and the Spectrum of Prevention

Towards a
Community
Solution

www.preventioninstitute.org/publications

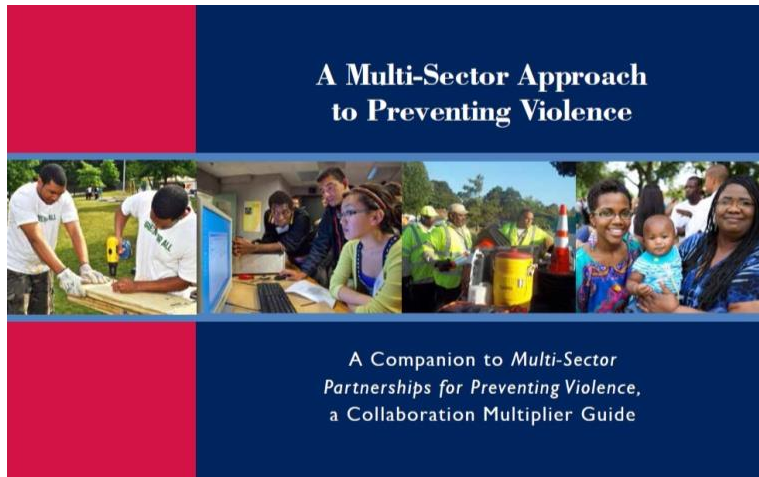
Prevention
Institute
Prevention and equity at the center of community well-being





By Centers for Disease Control and Prevention and Prevention Institute
<http://www.cdc.gov/NCCDPHP/dch/health-equity-guide/>

Prevention
Institute
Prevention and equity at the center of community well-being



www.preventioninstitute.org/publications

Prevention
Institute
Prevention and equity at the center of community well-being



Prevention
Prevention and equity | **Institute**
at the center of community well-being

221 Oak Street
Oakland, California 94607
Phone: (510) 444-7738
www.preventioninstitute.org
prevent@preventioninstitute.org

PreventConnect
1215 K Street
Suite 1850
Sacramento CA
95814

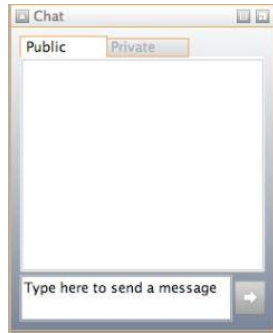
Website: preventconnect.org
Email: info@preventconnect.org
Email Group:
preventconnect.org/email-group
eLearning: learn.preventconnect.org
Wiki: wiki.preventconnect.org

preventconnect.org/Facebook preventconnect.org/YouTube
preventconnect.org/Twitter preventconnect.org/LinkedIn
preventconnect.org/Flickr preventconnect.org/Pinterest



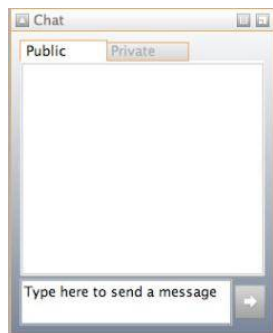
Text Chat Question



Prevention
institute
Prevention and equity at the center of community well-being



Text Chat Question



Prevention
institute
Prevention and equity at the center of community well-being



Please Answer the Polling Question

Question?

- A. xxxx
- B. xxxx
- C. xxxx
- D. xxxx

Prevention
Institute
Prevention and equity at the center of community well-being

