

**Welcome,
This Web Conference
Will Begin Soon**



A Project of



**Men of Color & Community Trauma Prevention:
What links sexual and domestic violence efforts
to trauma prevention?**

PreventConnect
1215 K Street
Suite 1850
Sacramento CA
95814

Website: preventconnect.org

Email: info@preventconnect.org

Email Group:

preventconnect.org/email-group

eLearning: learn.preventconnect.org

Wiki: wiki.preventconnect.org



preventconnect.org/Facebook



preventconnect.org/Twitter



preventconnect.org/Flickr



preventconnect.org/YouTube



preventconnect.org/LinkedIn



preventconnect.org/Pinterest



How to use this technology



- Raise hand
- Text chat & private chat
- PowerPoint slides
- Polling questions
- Phone
- Closed captioning
- Web conference guidelines

Please send a private chat message for help.

Call iLinc Technical Support at 800.799.4510.

PreventConnect is a national project of the California Coalition Against Sexual Assault sponsored by U.S. Centers for Disease Control and Prevention. The views and information provided in this web conference do not necessarily represent the official views of the U.S. government, CDC or CALCASA.

PreventConnect

- Domestic violence/intimate partner violence
- Sexual violence
- Violence across the lifespan
- Prevent before violence starts
- Connect to other forms of violence & oppression
- Connect to other prevention practitioners



2015 Web Conferences

Making Connections, Honoring Communities

- **February 26** Using Popular Education to Engage Communities in Sexual Violence Prevention
- **March 25** Supporting Community Culture as Norms Change Strategy for Preventing Sexual and Domestic Violence
- **March 26** The role of alcohol policies to prevent intimate partner violence and sexual violence perpetration
- **April 9: Men of Color and Community Trauma Prevention: What do Sexual and Domestic Violence efforts offer to support well-being?**
- **May 7** Foundations to the Future: A Prevention approach to Sexual and Domestic Violence
- **June 11** Linking with child focused approaches when preventing sexual and domestic violence
- **July 9** Joint Strategies: How does Sexual and Domestic Violence better leverage local health, justice, education and community sectors?
- **August 13** Closing the Loop: Increasing investment and sustainability for Sexual and Domestic Violence Prevention





Men of Color and Community Trauma Prevention: What links sexual and domestic violence efforts to trauma prevention?

April 9, 2015

11am-12:30pm PT; 2pm-3:30pm ET

Objectives

- Engage in a **candid discussion** around the links between preventing trauma and sexual and domestic violence.
- List **strategies** relevant for efforts focused on men of color, trauma and sexual and domestic violence.
- Identify tools and resources to support **ongoing innovative partnerships** between efforts focused on sexual and domestic violence prevention and efforts preventing trauma in communities of color.

About the Presenters



Tanya Rovira-Osterwalder
Program Manager
Prevention Institute



Annie Lyles, MSW
Program Manager
Prevention Institute

About the Webtechs



Alexis Captanian and William Haar
Prevention Institute



Prevention

a systematic process that promotes healthy environments and behaviors and reduces the likelihood or frequency of an incident, injury or condition occurring.

Primary Prevention

taking action before sexual and domestic violence occurs.

The Prevention Continuum

Up Front

Approaches that take place

BEFORE

violence has occurred to prevent initial perpetration or victimization

In the Thick

Immediate responses

AFTER

violence has occurred to deal with the consequences in the short-term

Aftermath

Long-term responses

AFTER

violence to deal with the lasting consequences and treatment interventions



Men of Color and Community Trauma Prevention:
What links sexual and domestic violence efforts
to trauma prevention?

Agenda

- Define Community Trauma
- Explore its value in prevention
- What is needed to support men of color?
 - Approach
 - Foster Shared Priorities
 - Strategies

Monsoon United Asian Women

- Offer Groups for Fathers and Children
- Increase Collaborations with Groups that are Focused on Men and Boys

Des Moines, IA



<http://muawi.org/>

Prevention
and
equity | Institute
at the center of community well-being



BLACK LIVES MATTER

Home About Us Media Ferguson Contact Us

#BlackLivesMatter

Get Active

Get Organized

Fight Back

Photo credit: www.blacklivesmatter.org

Prevention
and equity
at the center of community well-being
Institute



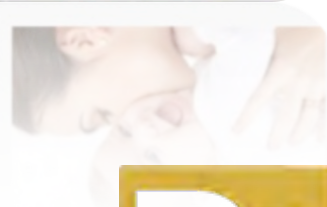
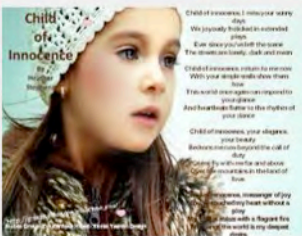


Photo credit: www.blacklivesmatter.org

Prevention
and
equity | **Institute**
at the center of community well-being



Essence of Innocence



Text Chat Question



What are you most interested in learning about today?

About Our Guests



Patricia McManus, Ph.D., RN
President/CEO
Black Health Coalition of Wisconsin, Inc.



Kenny Green
Program Manager
Gang Intervention Department
Toberman Neighborhood Center

Toberman Neighborhood Center



Kenny Green
Program Manager
Gang Intervention Department
Toberman Neighborhood Center



Black Health Coalition of WI



Patricia McManus, Ph.D., RN
President/CEO
Black Health Coalition of Wisconsin, Inc.



"FOCUSING ON THE HIGHEST QUALITY OF LIFE FOR AFRICAN AMERICANS"



Making Connections for Mental Health and Wellbeing Among Men and Boys in the U.S.

A Report on the Mental Health and Wellbeing of Men and Boys in the U.S. and Opportunities to Advance Outcomes related to Prevention, Early Intervention and Stigma Reduction

www.preventioninstitute.org/publications

Prevention
and
equity
at the center of community well-being
Institute



What is Trauma?

- Experiences or situations that are emotionally painful
- Chronic adversity (discrimination, racism, sexism, poverty, oppression)

PTSD

Persistent
Traumatic
Stress
Disorder



Mental Health is not Illness

“Mental health” is equated with illness, invoking the need for the medical model as a dominant approach.



Source: Making Connections for Mental Health and Well-Being among Men and Boys in the U.S.

“A dilemma we always get into is: do we want to describe this as an individual, internal problem or do we need to look at this as a **social-ecological problem** as well? I’m looking at these issues from a social-ecological perspective that has a lot to do with the **relationship between people and their social context and their physical environment.**”

Source: Making Connections for Mental Health and Well-Being among Men and Boys in the U.S.

Links Between Violence and Mental Health

Youth exposed to violence are at significantly higher risk for:


- Multiple mental health conditions
- Depression and risk for suicide
- Post-Traumatic Stress Disorder (PTSD)
- Aggressive and/or violent behavior disorders

MAKING THE CASE

FACT SHEET

UNITY
URBAN NETWORKS TO INCREASE TRANSPARENCY
through Violence Prevention

Violence and Mental Health



Experiencing, exposure to and fear of violence have known emotional and mental health consequences. These consequences are often lifelong, require extensive treatment, and can, in turn, affect physical health as well as bring stress and consequences to others.

- Youth with past exposure to interpersonal violence (as a victim or witness) have significantly higher risk for Post-Traumatic Stress Disorder (PTSD), major depressive episodes, and substance abuse/dependence (1)
- Women who experience Intimate Partner Violence are 3 times more likely to display symptoms of depression, 4 times more likely to have PTSD, and 6 times more likely to have suicidal ideation (2)

Current research has identified the following mental health conditions as significantly more common among those exposed to violence either directly (e.g., as a victim or perpetrator) or indirectly (e.g., as a witness):

- Multiple mental health conditions (5-9)
- Depression and risk for suicide (1,4,7,10-12)
- Post-Traumatic Stress Disorder (PTSD) (1,10,12)

<http://www.preventioninstitute.org/component/jlibrary/article/id-301/127.html>

Prevention
and equity
at the center of community well-being
Institute



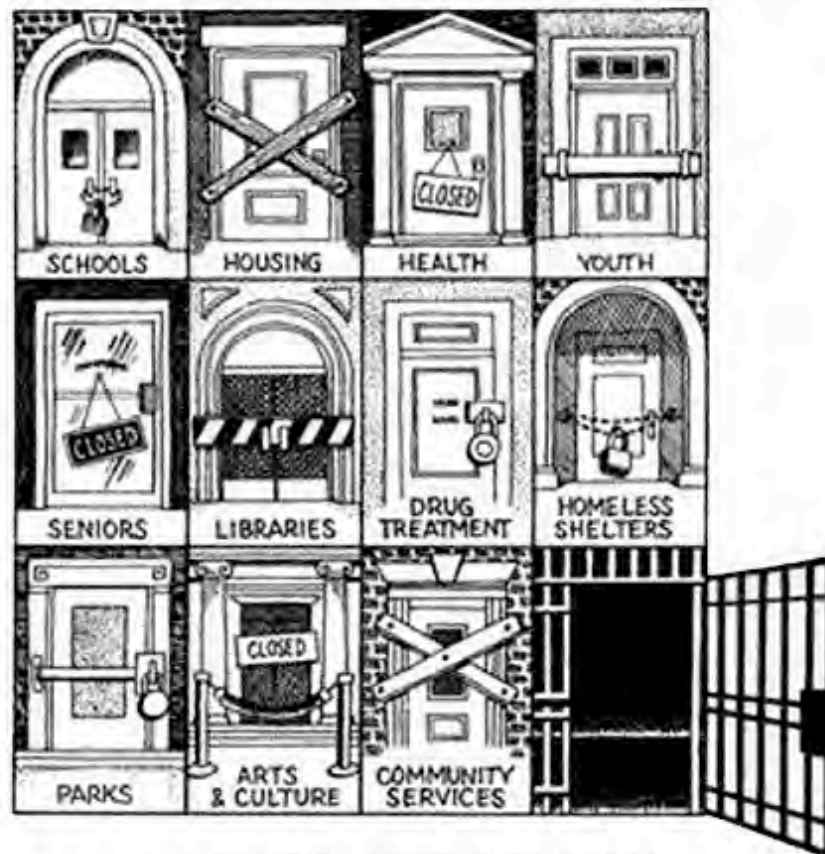
Lack of Coordination



Mental health services and support are delivered in multiple sectors outside the “system” and no real coordination, focal point, or central intelligence exists.

Source: Making Connections for Mental Health and Well-Being among Men and Boys in the U.S.

WHEN ONE DOOR CLOSES ANOTHER ONE OPENS



Chris: from Child Victim to Adult Offender

Age	Role in Incident	# of Encounters w/Criminal Justice System
0 - 3	no reported incidents	---
4	Victim	1
6	Victim	1
7	Victim	1
8	Victim	1
9	Suspect	1
10	Suspect	1
12	Suspect	1
12	Victim	2
13	Suspect	16
13	Victim	14
14	Arrestee	28
14	Suspect	5
16	Arrestee	13
16	Suspect	7
16	Victim	4
17	Arrestee	6
17	Suspect	2

Total: 80 Encounters

Healthscaping!



How do the systems
and built
environment impact
men and boys of
color?

Root Causes Shape...

- ❑ Systems
- ❑ Neighborhoods
- ❑ School
- ❑ Families
- ❑ Peers

Building Community Resilience

- Restorative Justice
- Healing Circles
- Reclaim and Improve Public Spaces
- Shift Community Social Norms
- Enhance Social Connections and Networks
- Build Intergenerational Connections and Networks
- Organize and Promote Regular Positive Community Activity
- Providing more of a voice and element of power for community folks around shifting and changing environmental factors as well as the structural factors

MAKING THE CASE

*Addressing and
Preventing Trauma at
the Community Level*



Harvard Finkelhor, Ph.D., is Associate Professor in the Department of Social and Behavioral Sciences, University of California, Berkeley.

Healthscaping



What else is included?

What is Needed?

- Mental wellbeing connected to community-level approaches.
- Connection to men and boys.
- Re-connection to cultural identity and expanded notions of masculinity.
- Connect systems and institutions to mental health and wellbeing and each other

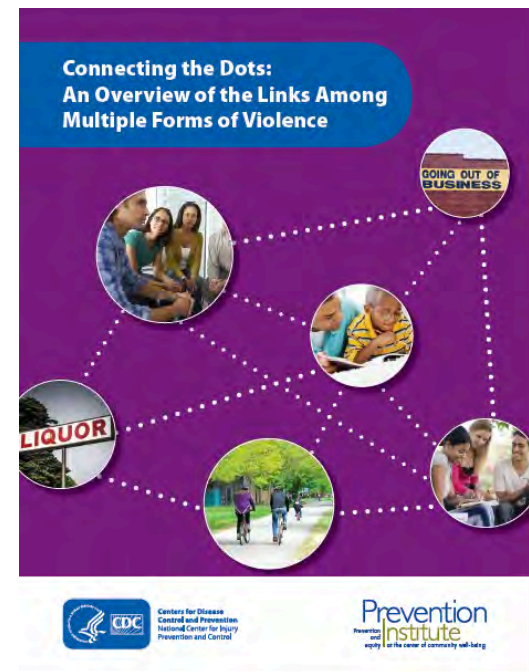
Please Answer the Polling Question

How many strategies are you already engaged in?

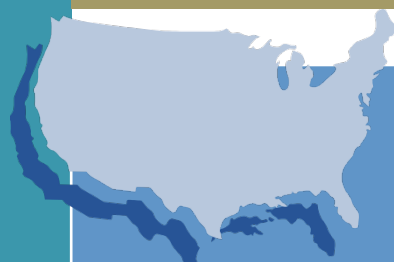
- A. We aren't there yet
- B. We support the work of others in 2 or more
- C. We lead or jointly lead 2 or more
- D. We lead or jointly lead 3 or more

Connecting the Dots

- **What it is:** Brief document that translates research about the connections between different forms of violence (e.g. shared risk and protective factors)
- **Audience:** Public health and violence prevention practitioners and their partners
- **Purpose:** Help violence prevention practitioners and their partners
 - 1) Better **understand** and **make the case** for the connections between multiple forms of violence,
 - 2) Think **strategically and creatively** about **ways to prevent** all types of violence from occurring in the first place



Societal and Neighborhood Risk Factors



	CM	TDV	IPV	SV	YV	Bullying	Suicide	Elder Abuse
Norms supporting aggression*	X	X	X	X	X			X
Harmful gender norms*	X	X	X	X	X	X		
Community Violence	X			X	X	X		
Lack of economic opportunities	X		X	X	X		X	
Low Neighborhood Support/ Cohesion*	X	X	X		X		X	

NOTE: CM (Child Maltreatment), TDV (Teen Dating Violence), IPV (Intimate Partner Violence), SV (Sexual Violence), YV (Youth Violence)

*Norms are generally measured at the individual level

Source: Wilkins, N., Tsao, B., Hertz, M., Davis, R., Klevens, J. (2014). **Connecting the Dots: An Overview of the Links Among Multiple Forms of Violence**. Atlanta, GA: National Center for Injury Prevention and Control, Centers for Disease Control and Prevention Oakland, CA: Prevention Institute.



Neighborhood & Relationship Protective Factors



	CM	TDV	IPV	SV	YV	Bullying	Suicide	Elder Abuse
Coordination of services among community agencies	X		X				X	X
Social isolation	X	X	X		X	X	X	X
Community support and connectedness*	X		X	X	X		X	X

NOTE: CM (Child Maltreatment), TDV (Teen Dating Violence), IPV (Intimate Partner Violence), SV (Sexual Violence), YV (Youth Violence)

*Community support and connectedness typically measured at the individual level

Source: Wilkins, N., Tsao, B., Hertz, M., Davis, R., Klevens, J. (2014). **Connecting the Dots: An Overview of the Links Among Multiple Forms of Violence**. Atlanta, GA: National Center for Injury Prevention and Control, Centers for Disease Control and Prevention Oakland, CA: Prevention Institute.

What is Needed?

- Mental wellbeing connected to community-level approaches.
- Connection to men and boys.
- Re-connection to cultural identity and expanded notions of masculinity.
- Connect systems and institutions to mental health and wellbeing and each other

A Family Place Library

Chester, Penn.



Black Health Coalition of WI



Patricia McManus, Ph.D., RN
President/CEO
Black Health Coalition of Wisconsin, Inc.



"FOCUSING ON THE HIGHEST QUALITY OF LIFE FOR AFRICAN AMERICANS"



Black Health Coalition of WI



Prevention
and equity | **Institute**
at the center of community well-being



Black Health Coalition of WI



Black Health Coalition of WI



Black Health Coalition of WI



Prevention
and
equity | **Institute**
at the center of community well-being



What is Needed?

- Mental wellbeing connected to community-level approaches.
- Connection to men and boys.
- Re-connection to cultural identity and expanded notions of masculinity.
- Connect systems and institutions to mental health and wellbeing and each other

THE HALLS
CLASS DISMISSED

WATCH EPISODES ONLINE
 THEHALLSBOSTON.COM
 [@THEHALLSBOSTON](https://twitter.com/THEHALLSBOSTON)

THE BOSTON PUBLIC HEALTH COMMISSION ****THE BEYOND MEASURE YEARS**** BEYOND MEASURE PRODUCTION **** BY MIKA CHRISTOPHER AND MIRANDA CRISPINEL "THE HALLS" KIMARA FLEMING DAVID COOPER JACQUELINE COMER JAZZMIN HENRIKSON TERRY BENS' NISIMU LEVINE
 LUCAS IRAMANI OLIANA RENEE DICKY SMITH ISABEL DOLAND ESTE FOR BERT STEPHEN PW **** JIM AND DANIEL STONING AND BEYOND MEASURE PRODUCTIONS ** SEAN KADIS & JZANUCCI CELINA TROBARE **** MIRANDA CRISPINEL ** ALYSSA GONZALEZ AND MIKA CHRISTOPHER
 TODD LE WIRE- JESSICA MIKA CHRISTOPHER ** ** MARVIN THOMAS **** BARRIS SANDS **** ** MIRANDA CRISPINEL AND MIKA CHRISTOPHER AND TANGI STRONG TERRY **** MIKA CHRISTOPHER AND MIRANDA CRISPINEL

Boston, MA

Prevention
and
equity **Institute**
at the center of community well-being.



What is Needed?

- Mental wellbeing connected to community-level approaches.
- Connection to men and boys.
- Re-connection to cultural identity and expanded notions of masculinity.
- Connect systems and institutions to mental health and wellbeing and each other

Coaching Boys into Men

Multnomah County, OR



Prevention
and equity | **Institute**
at the center of community well-being



Healing Ceremonies

Los Angeles



Mbasics.facebook.com

Prevention
and equity | **Institute**
at the center of community well-being



Toberman Neighborhood Center



Kenny Green
Program Manager
Gang Intervention Department
Toberman Neighborhood Center



Toberman Neighborhood Center

In 2013 we provided more than 24,000 services to 7,500 families.



Toberman Neighborhood Center



Prevention
and
equity | **Institute**
at the center of community well-being



Toberman Neighborhood Center



<http://www.sasaki.com/project/124/wilmington-waterfront-park/>

Prevention
and
equity
Institute
at the center of community well-being





<http://www.sasaki.com/project/124/wilmington-waterfront-park/>

Prevention
and
equity | **Institute**
at the center of community well-being



What is Needed?

- Mental wellbeing connected to community-level approaches.
- Connection to men and boys.
- Re-connection to cultural identity and expanded notions of masculinity.
- Connect systems and institutions to mental health and wellbeing and each other

Juvenile Supervision Center

Minneapolis



Culturally-Relevant Approaches to Mental Health

Oakland



New York Times

Source: Making Connections for Mental Health and Well-Being among Men and Boys in the U.S.

Prevention
and equity
Institute
at the center of community well-being



Resilience Factors: Marin County

- Connection to a caring adult, positive relationships and attachments
- Respect for diversity and an emphasis on equality
- Community connectedness, strong social networks
- Skills in solving problems non-violently

1. Cultivate a connected community
2. Unlearn the culture of violence
3. Engage at the first sign of risk

The infographic is a vertical teal rectangle with white text. It is divided into three sections, each starting with a large white number (1, 2, or 3) on the left. Each section contains a title, a sub-header, and a bulleted list of items. The items are written in a smaller, lighter teal font.

1 Engage at the first sign of risk
Strategy

- Family support services

Potential Activities

- Case management
- Brief interventions
- Improve access to mental health and other support services

2 Cultivate a connected community
Strategies

- Quality Education and positive School climates
- Youth Leadership

Potential Activities

- Youth peer interventions
- Skills—building for youth
- Clinic engagement activities and coordination of existing efforts

3 Support healthy norms around masculinity, femininity and sexual orientation
Strategies

- Positive social and emotional development
- Engage men and boys

Potential Activities

- Universal curriculum that address risk and resilience factors
- Media campaigns that promote healthy relating and positive social norms

Healthscaping



What is one thing
you want to
remember from
today's discussion?

Black Health Coalition of WI

WE MAY ENCOUNTER
MANY DEFEATS
BUT WE MUST NOT
BE DEFEATED

Maya Angelou

celebquote.com

Prevention
and
equity
Institute
at the center of community well-being



Sesame Workshop

Countering
sorrow and
sadness with
talk, time...and
love.



For More Information



"FOCUSING ON THE HIGHEST QUALITY OF LIFE FOR AFRICAN AMERICANS"

Patricia McManus, Ph.D., RN
Black Health Coalition of Wisconsin, Inc.

www.bhcw.org



Kenny Green
Gang Intervention Department
Toberman Neighborhood Center

[www.toberman.org/programs/
gang-intervention/](http://www.toberman.org/programs/gang-intervention/)





www.preventioninstitute.org

221 Oak Street
Oakland, CA 94607
Tel: (510) 444-7738

Prevention Institute

Follow us on:



annie@preventioninstitute.org

PreventConnect
1215 K Street
Suite 1850
Sacramento CA
95814

Website: preventconnect.org

Email: info@preventconnect.org

Email Group:

preventconnect.org/email-group

eLearning: learn.preventconnect.org

Wiki: wiki.preventconnect.org



preventconnect.org/Facebook



preventconnect.org/Twitter



preventconnect.org/Flickr



preventconnect.org/YouTube



preventconnect.org/LinkedIn



preventconnect.org/Pinterest

