

David S. Lee, MPH



Intentional, Strategic and Comprehensive: Preventing Sexual Violence on College Campuses

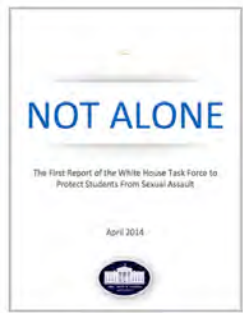
Ohio Department of Higher Education, 2016 Sexual Violence Prevention & Response Summit
Columbus, OH, February 25, 2016

Get Materials

Materials for this session will be provided on
www.PreventConnect.org
(Search for "Ohio Department of Higher
Education")



Campus Sexual Violence



White House to Press Colleges to Do More to Combat Rape

By JENNIFER STEINHAUER APRIL 28, 2014

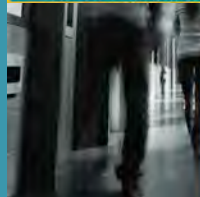
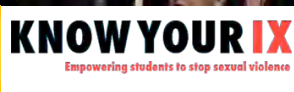
Fight Against Sexual Assaults Holds Colleges to Account

By RICHARD PÉREZ-PUEA and KATE TAYLOR MAY 3, 2014

As of February 10, 2016 there are 204 sexual violence cases under investigation at 164 postsecondary institutions.



Student Activism



Recent Headlines

UW-Madison task force advances ideas to fight campus sexual violence

Guest columnist | Campuses continue efforts to prevent sexual violence

University recognizes campus sexual assault

Tennessee joins list of colleges facing sexual assault lawsuits

Cornell rape case is a grim reminder of systemic greek sexual assault

York College joins anti-sexual assault campaign

Feb 15-19, 2016



5

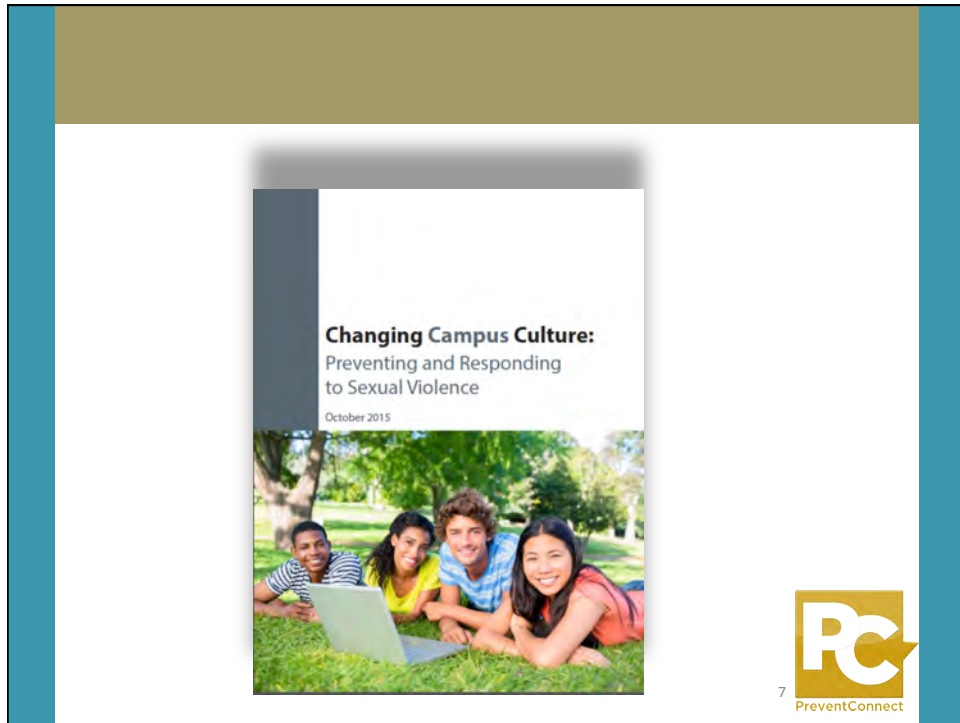
PreventConnect



Sexual Violence on College Campuses

WHAT DO WE DO?

6



PC
PreventConnect

Sexual Violence on College Campuses

RESPOND

Is that enough?

8



PreventConnect

Sexual Violence on College Campuses

PREVENT

9



PreventConnect

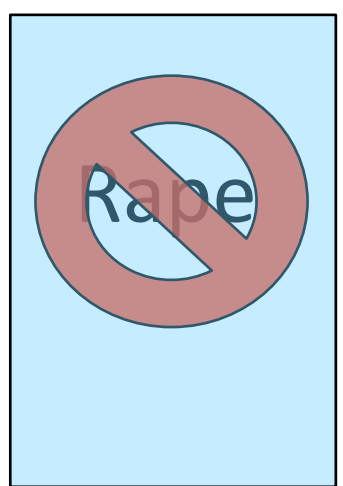
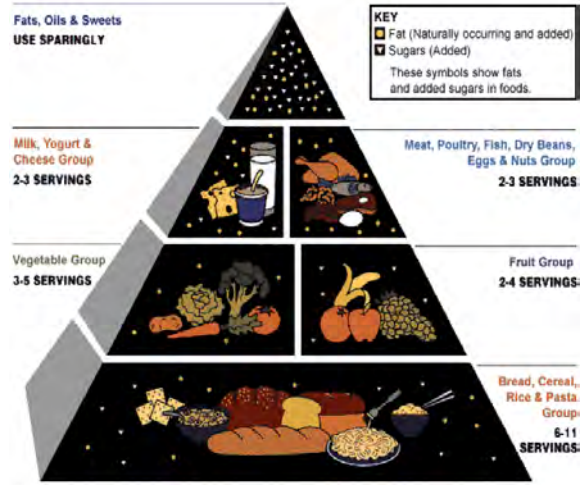
Sexual Violence on College Campuses

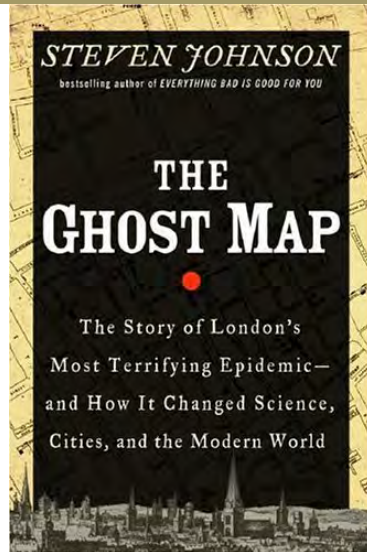
PREVENT

What does it take to prevent?

10

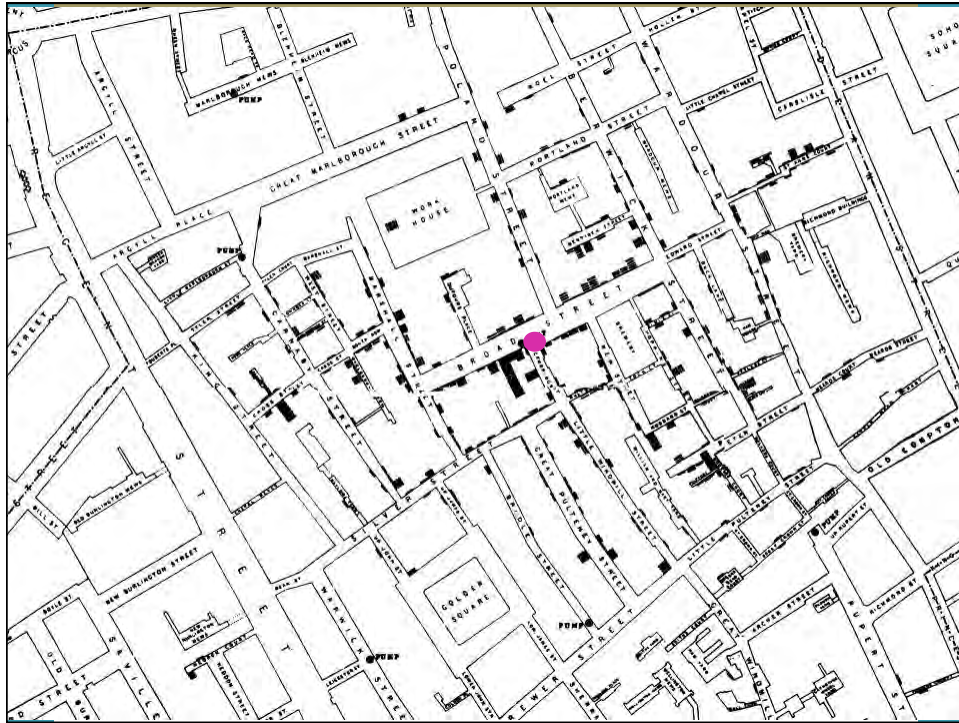
Provide Information?

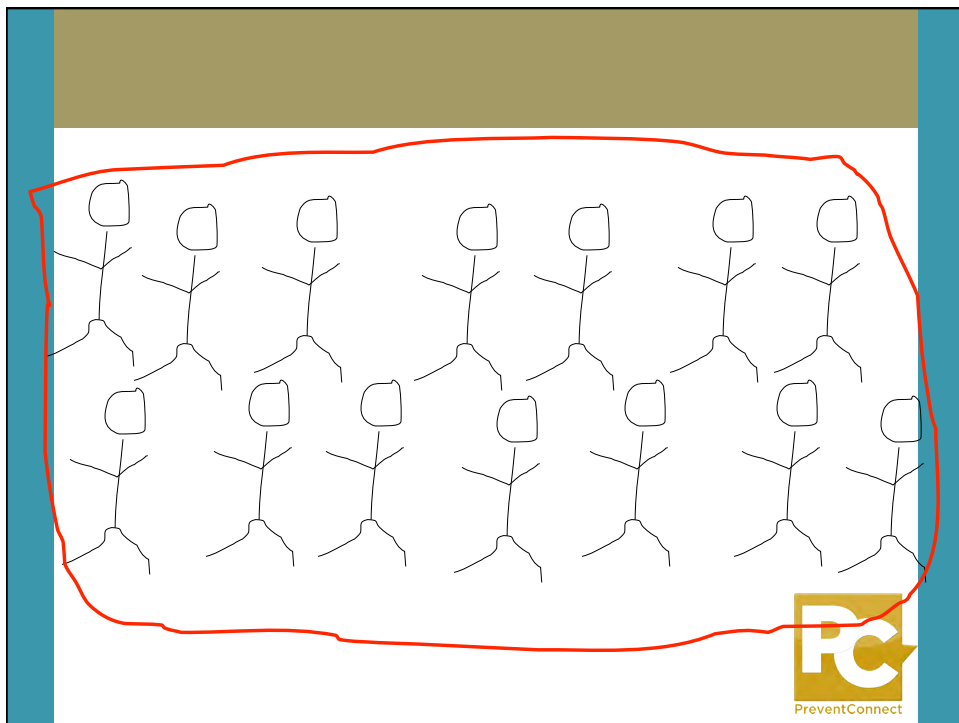
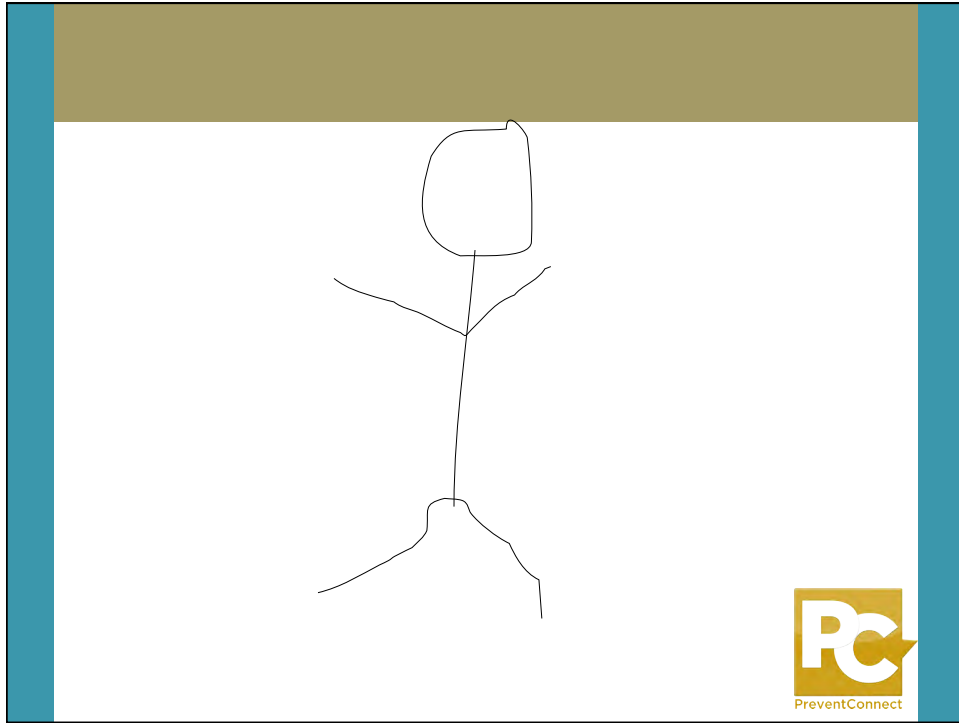




John Snow



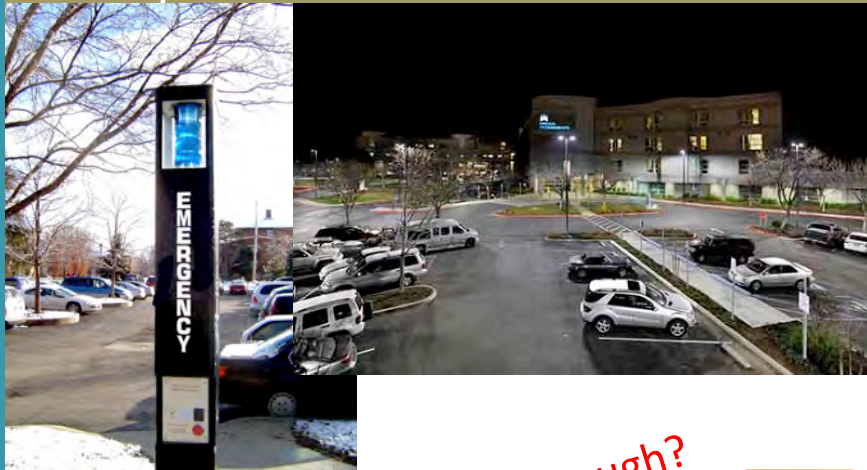




What is the “handle” to prevent sexual assault?



What is the “handle” to prevent sexual assault?



Is that enough?



20

What is the “handle” to prevent sexual assault?

- Culture
- Campus Culture
- Norms
- Gender Socialization
- Power Dynamics



BEST Parties: Be Equal, Safe, and Trustworthy
Join the Party Revolution!

<http://www.menaspeacemakers.org/best/>



21

PreventConnect



PreventConnect

Sexual Violence Prevention

GUIDING CONCEPTS

22



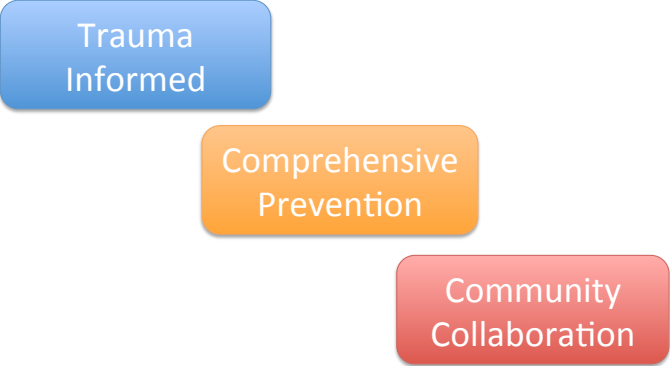
CAMPUS
Intentional • Strategic • Comprehensive

www.PreventConnect.org

23  PreventConnect

3-Pronged Approach

Approach to Effectively Addressing and Preventing Sexual, Domestic, Dating and Stalking Violence




Trauma Informed

Comprehensive Prevention

Community Collaboration

www.preventconnect.org/2014/04/campus-sexual-assault-garners-national-attention/

24  PreventConnect

3-Pronged Approach

Trauma
Informed

- Survivor needs vary
- Access to confidential services
- Policies to say what they do & do what they say



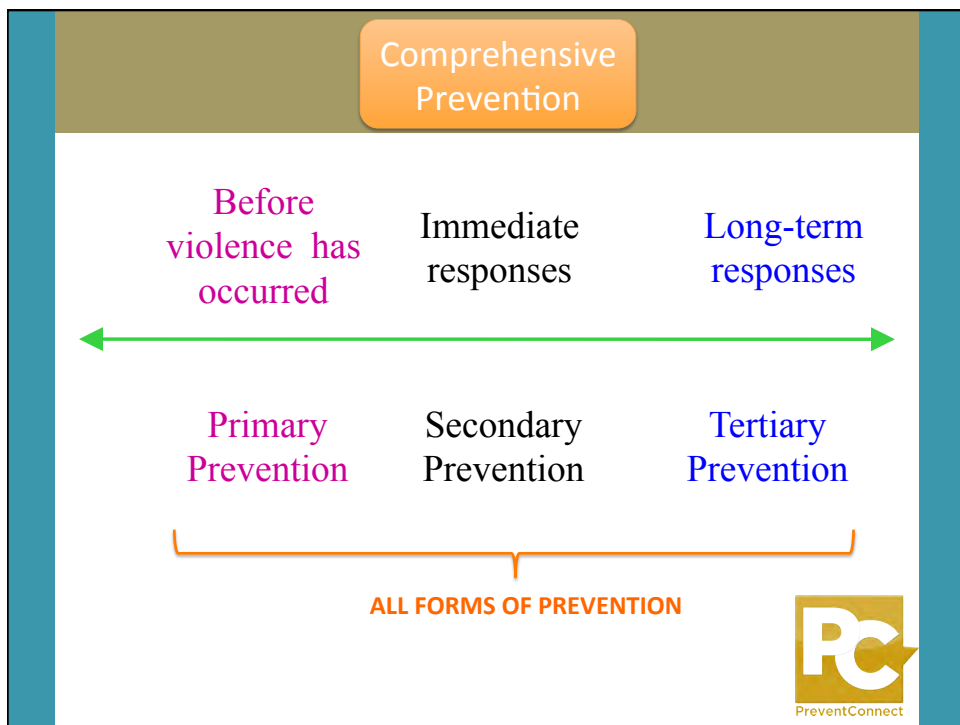
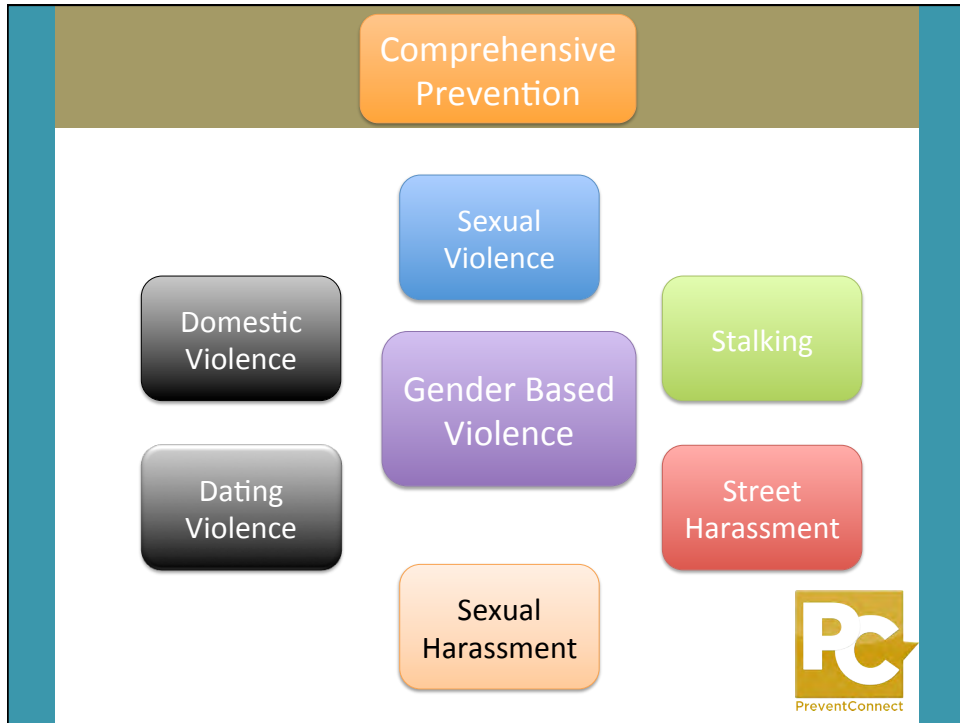
25

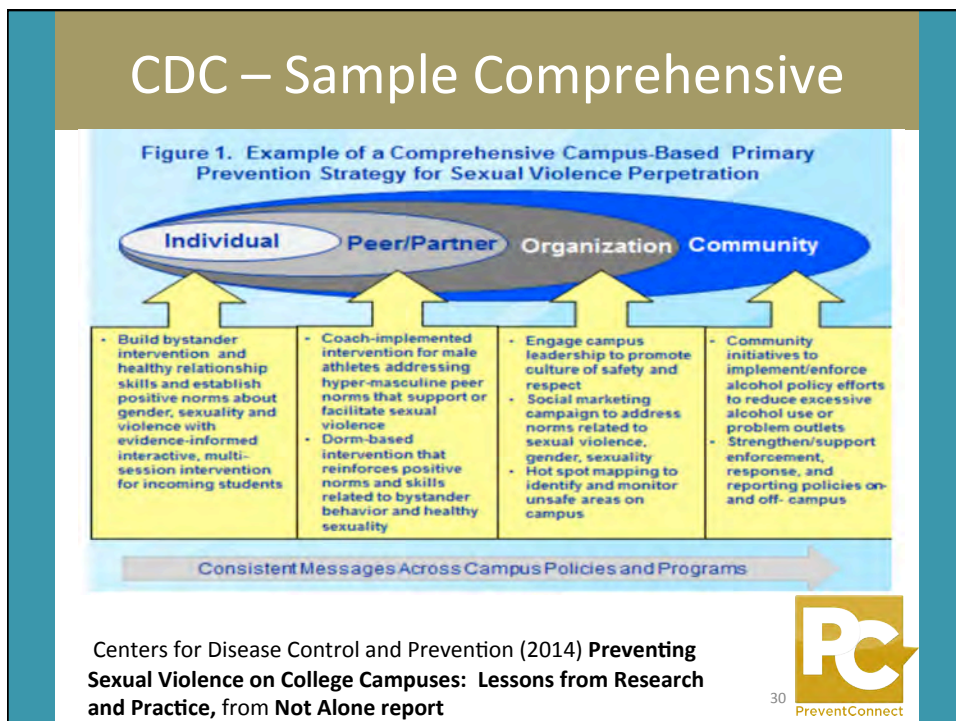
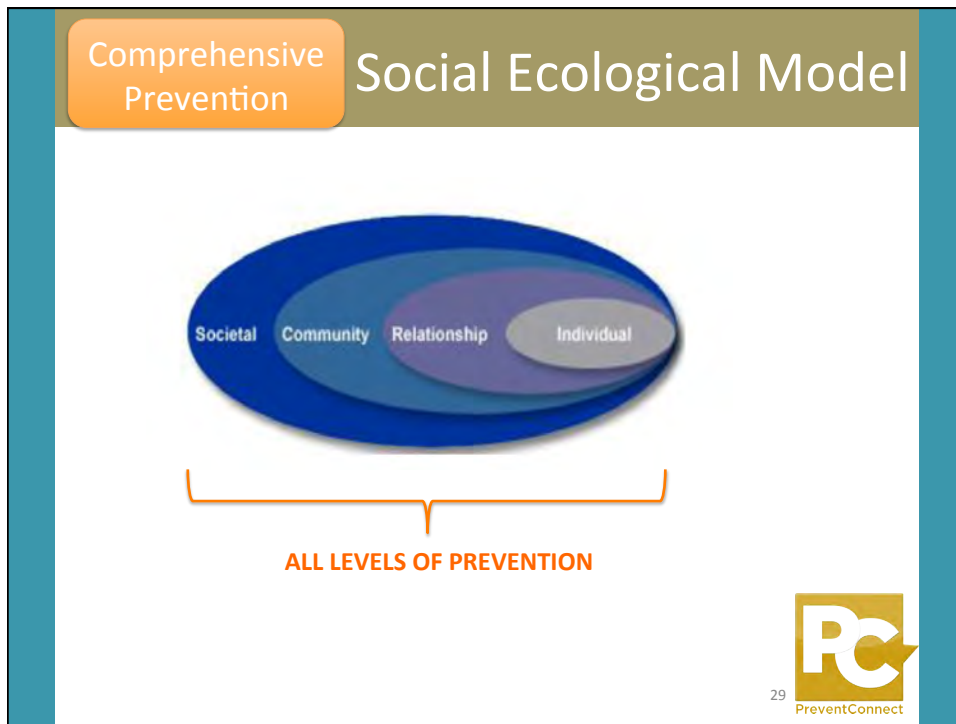
3-Pronged Approach

Comprehensive
Prevention



26





Include Institutional in Social Ecological Model



Need a Prevention Plan



- Planned, Strategic and Intentional
 - Mix of Topics (elements)
 - Mix of Dissemination Modalities
 - Mix of Partnerships



Sample Prevention Approaches

- Anti-oppression work
- Bystander intervention
- Connecting alcohol education and policy with sexual & domestic violence prevention
- Consent education
- Engaging Men
- Gender equity
- Media literacy
- Restorative justice
- Risk reduction
- Sexual health promotion
- Social norms change



Dissemination Modalities

- Awareness events
- Educational workshops
- Online orientations
- Policies as part of a prevention strategy
- Professional and volunteer training
- Social marketing
- Theater-based programs



Where to start?: Map out your work

Advocacy Outreach and Awareness Risk Reduction Primary Prevention

<http://learn.preventconnect.org/course/view.php?id=48>

3-Pronged Approach

Approach to Effectively Addressing and Preventing Sexual, Domestic, Dating and Stalking Violence

Trauma Informed

Comprehensive Prevention

Community Collaboration

www.preventconnect.org/2014/04/campus-sexual-assault-garners-national-attention/

36

3-Pronged Approach

Community Collaboration




37 PreventConnect

3-Pronged Approach

Community Collaboration

- Universities/Colleges and their communities have symbiotic relationship
- Partnership between on-campus and off-campus resources
- Systematic Climate Checks



38 PreventConnect

Campus-based groups and constituencies

- Residential Life
- Athletics
- Clergy
- Women's Center
- Health Center
- Student Life
- Disability Services
- Students
- Student Associations
- Greek Life
- Culturally Specific Services/Centers
- LGBTQ Services/Center
- ROTC
- Campus Police
- Title IX
- Student Affairs

**NEED TO TAILOR TO
YOUR CAMPUS**



39

PreventConnect

NOTE: Not intended to be complete list

Community Partnerships

- Rape crisis center / domestic violence agency
- State sexual violence / domestic violence coalitions (OAESV, ODVN)
- Coordinated Community Response
 - Police
 - District Attorney
 - Hospital
- Other community-based groups/businesses
 - Bars



40

PreventConnect



Sexual Violence Prevention on College Campuses

CHALLENGES & OPPORTUNITIES

Challenges and Opportunities

- 1. Limited evidence of effectiveness of sexual and domestic violence prevention.**



Understanding Evidence



<http://vetoviolenecdc.gov/apps/evidence/#&panel1-1>

www.cdc.gov/violenceprevention/pub/understandingevidence.html



Use Data

Recommendation #1: Use data to guide action.

- Climate Surveys
- Clery Reports
- Campus Police data
- Local Law Enforcement data
- mapping
- Data from connected topics (i.e. alcohol related incidents)
- Evaluation of prevention programs

CLIMATE CHANGE IS IN YOUR HANDS... 
TAKE THE CAMPUS CLIMATE SURVEY!

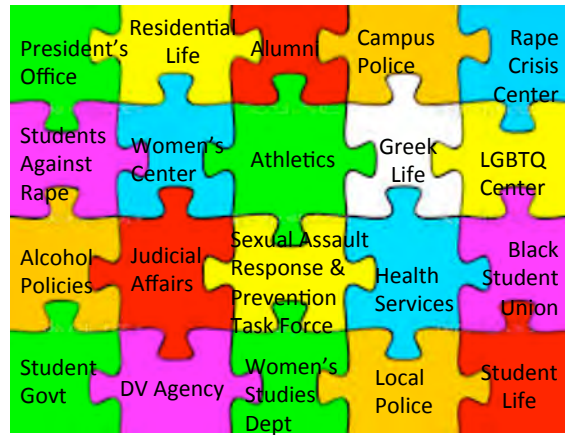


44

PreventConnect

Challenges and Opportunities

2. Fragmentation on campuses, in the larger community, & among different topics.



45

Challenges and Opportunities

3. No "solution in a box."



Compliance provides the starting place to build a comprehensive approach.



46

Challenges and Opportunities

4. Unique needs of each campus, including historically marginalized communities.



47

Challenges and Opportunities

5. A complex issue that requires a shift in campus culture.

A graphic for the "IT'S ON US" campaign. On the left, the text "IT'S ON US" is displayed in white on a black background. On the right, four bullet points define the campaign's goals: "To RECOGNIZE that non-consensual sex is sexual assault.", "To IDENTIFY situations in which sexual assault may occur.", "To INTERVENE in situations where consent has not or cannot be given.", and "To CREATE an environment in which sexual assault is unacceptable and survivors are supported."

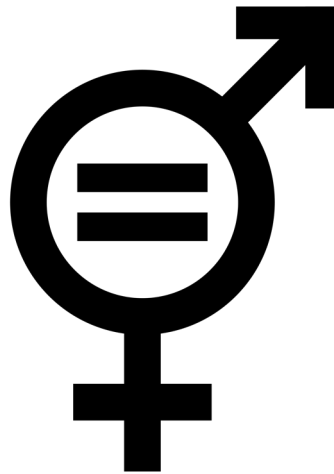
Recommendation #3: Communicate a culture of shared respect and responsibility



48

Challenges and Opportunities

6. Gender equity perspective in sexual violence prevention.



49

Challenges and Opportunities

7. Measuring success.



50



OPPORTUNITY FOR PREVENTION: BUILD ON STRENGTHS AND OPPORTUNITIES

51

Need to Learn from Experiences



New Efforts

HEARTMOB

CAPPA
CAMPUS ADVOCATES AND PREVENTION
PROFESSIONALS ASSOCIATION

Center for Changing Our Campus Culture

The affirmative consent campus project

Campus Policy Report

53 PreventConnect

Situational Prevention

SMART FY 15 Campus-Focused Sexual Assault Perpetration Prevention and Education Program

- ...reduce opportunities for specific categories of crime
- Focus on changing the environment





Sexual Violence on College Campuses

WHAT DO WE DO?

55

Transform Culture



56

Join the Community
to Share and Learn
About Prevention


JANUARY 2016



PC CAMPUS
Intentional • Strategic • Comprehensive

RESOURCE GUIDE FOR SEXUAL AND INTERPERSONAL VIOLENCE PREVENTION

Map out your work




Advocacy

Outreach and Awareness

Risk Reduction

Primary Prevention

<http://learn.preventconnect.org/course/view.php?id=48>



Partner



Your Local Rape Crisis Center &
Domestic Violence Agency



59

Plan



Intentional • Strategic • Comprehensive



60

Prevent

When everyone is involved
PREVENTION IS POSSIBLE



nsvrc.org/saam
●●●●●

Sexual Assault
Awareness Month



61

PreventConnect

David S. Lee
www.PreventConnect.org
david@calcasa.org



PreventConnect

THANK YOU

Slides for this session will be provided on www.PreventConnect.org
(Search for "Ohio Department of Education")

62