

**Welcome,
This Web Conference
Will Begin Soon**



A Project of



**What about Power and Patriarchy? Examining
Social Cohesion and Social Inclusion Strategies
to Prevent Sexual and Domestic Violence**

PreventConnect
1215 K Street
Suite 1850
Sacramento CA
95814

Website: preventconnect.org

Email: info@preventconnect.org

Email Group:

preventconnect.org/email-group

eLearning: learn.preventconnect.org

Wiki: wiki.preventconnect.org



preventconnect.org/Facebook

preventconnect.org/Twitter

preventconnect.org/Flickr

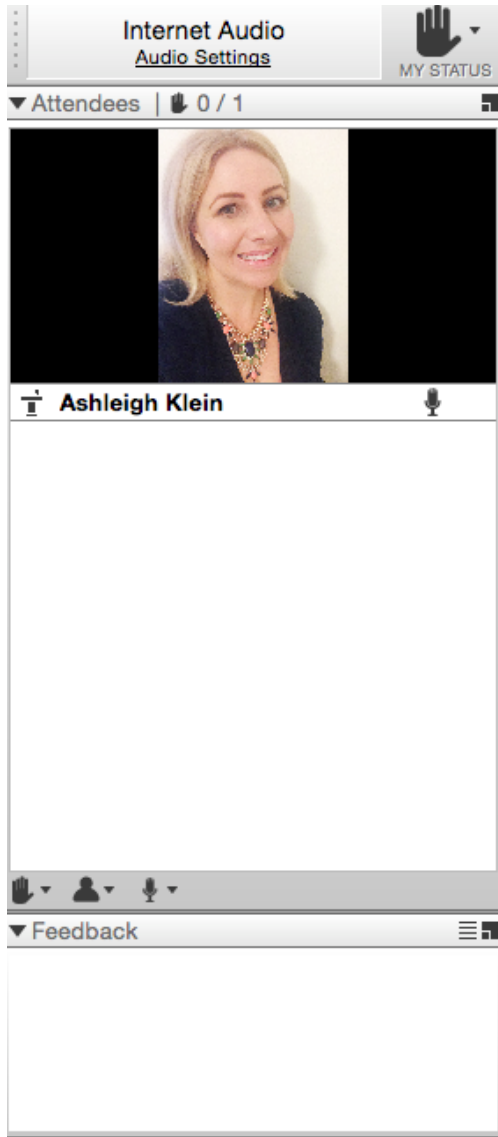
preventconnect.org/YouTube

preventconnect.org/LinkedIn

preventconnect.org/Pinterest



How to use this technology



- Raise hand
- Text chat & private chat
- PowerPoint slides
- Polling questions
- Phone
- Closed captioning
- Web conference guidelines

Please send a private chat message for help.

Call iLinc Technical Support at 800.799.4510.

PreventConnect

- Domestic violence/intimate partner violence
- Sexual violence
- Violence across the lifespan
- Prevent before violence starts
- Connect to other forms of violence & oppression
- Connect to other prevention practitioners



Beyond Partnerships: Shared Linkages for Prevention

February 3: From Foundations to the Future: A prevention approach to sexual and domestic violence

March 9: Harmful Gender Norms: How can we build alliances with queer (LGBTQ) movements to help prevent sexual and domestic violence?

March 23: Harmful Gender Norms: Moving beyond binary and heteronormative approaches to preventing sexual and domestic violence

May 4: Shared Roots: Sexual and domestic violence prevention strategies in support of social justice

June 8: Engaging Youth in Shaping Strategies and Solutions to Prevent Sexual and Domestic Violence

July 13: What about Power and Patriarchy? Examining social cohesion strategies to prevent sexual and domestic violence

August 3: Authentically Engaging Communities to Prevent Sexual and Domestic Violence

August 17: Using Shared Risk and Protective Factors : Research into practice and policy to prevent sexual and domestic violence

September 7: Equity, Trauma and Preventing Sexual and Domestic Violence





What about Power and Patriarchy? Examining Social Cohesion and Social Inclusion Strategies to Prevent Sexual and Domestic Violence

July 13, 2016

11am-12:30pm PT; 2pm-3:30pm ET

PreventConnect is a national project of the California Coalition Against Sexual Assault sponsored by U.S. Centers for Disease Control and Prevention. The views and information provided in this web conferences do not necessarily represent the official views of the U.S. government, CDC or CALCASA.

Objectives

- Discuss **recent research** on social cohesion, social inclusion, and SDV.
- Engage in a candid discussion about how to address **power imbalances** and other conditions that contribute to SDV as a part of **social cohesion** and **social inclusion** strategies.
- Identify **considerations, tools** and **resources** that can be used to guide efforts.

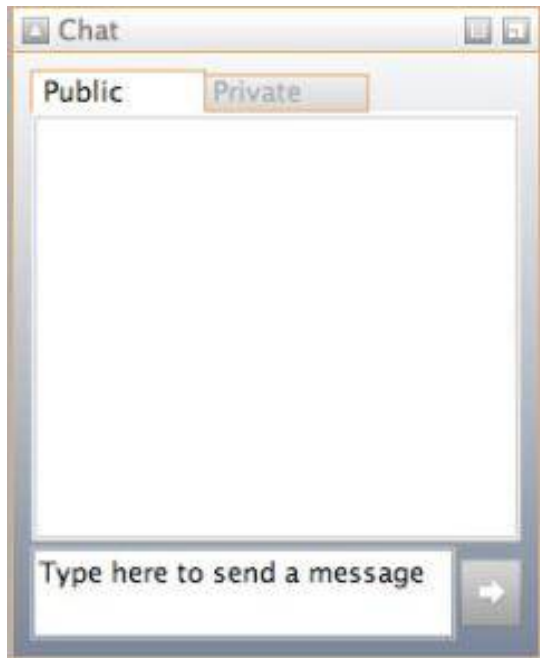
Pronouns

- Replaces a person's name when talking in the third-person
- Not preferred (not up for debate)
- While pronouns imply something about gender, they don't declare someone's gender identity

Examples:

- Ze/zir/zim
- He/him/his
- She/her/hers
- They/them/theirs
- Cie/hir/hirs (pronounced see/here/heres)

Text Chat Question



What pronouns do you go by?

About the Host



Lisa Fujie Parks, MPH
Program Manager
Prevention Institute
(she, her, hers)

About the Webinar Co-Designer



Casey Castaldi
Prevention Institute
(She, her, hers)



Please Answer the Polling Question

To what extent are you integrating social cohesion or social inclusion strategies into your SDV prevention work?

- A. Not at all
- B. Just starting to think about it
- C. Working to strengthen one/both of these factors through at least one prevention effort
- D. Working to strengthen one/both of these factors through more than one prevention effort

Answer on
the left



Feedback

A

B

C

D

No Answer

Our First Guest



Emily Rothman, ScD
Associate Professor
Boston University
(she, her, hers)

Definitions

- **Social Cohesion:** Mutual trust and solidarity in a community or a neighborhood
- **Social Inclusion:** The process of improving the terms for individuals and groups to take part in society.
 - Or: The provision of certain rights to all individuals and groups in society, such as employment, adequate housing, health care, education and training, etc.

Vanderende, K. E., Yount, K. M., Dynes, M. M., & Sibley, L. M. (2012). Community-level correlates of intimate partner violence against women globally: A systematic review. *Social Science & Medicine*, 75(7), 1143-1155.
<http://www.worldbank.org/en/topic/socialdevelopment/brief/social-inclusion>
<http://www.collinsdictionary.com/dictionary/english/social-inclusion>

Jenson 1998

Definition of Social Cohesion:

Affiliation (vs. isolation)

- Share common values
- Feeling of belonging to same community

Insertion (vs. exclusion)

- Opportunity to participate in local economy

Participation (vs. passivity)

- Involvement in public affairs

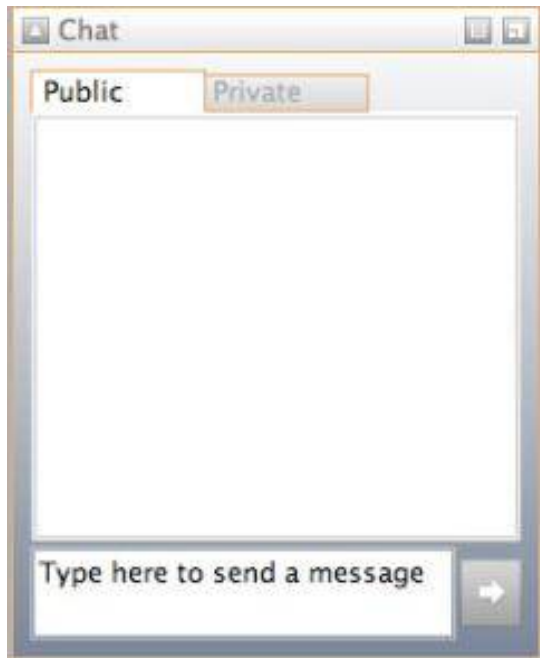
Acceptance (vs. rejection)

- Tolerance of differences

Legitimacy (vs. illegitimacy)

- Institutions represent the people and their interests

Text Chat Question



What questions do you have about the definitions of social cohesion and social inclusion and how they relate to SDV prevention?

Research Findings – Social Cohesion

- **Social Cohesion:**

- A focus on **neighborhood** social cohesion
- Social cohesion is often discussed within the context of **collective efficacy**, which combines social cohesion and informal social control. Collective efficacy has been shown to be protective against DV
 - Links to reducing child neglect
 - Reducing other forms of violence

Center for Disease Control and Prevention. (2013). *Healthy Places - Social Capital*. Retrieved from <http://www.cdc.gov/healthyplaces/healthtopics/social.htm>

Harvey, A., Garcia-Moreno, C., & Butchart, A. (2007). *Primary prevention of intimate-partner violence and sexual violence: Background paper for WHO expert meeting May 2–3, 2007* (Rep.). Geneva: World Health Organization. Retrieved from http://www.who.int/violence_injury_prevention/publications/violence/IPV-SV.pdf

World Health Organization & London School of Hygiene and Tropical Medicine. (2010). *Preventing intimate partner and sexual violence against women: taking action and generating evidence*. Geneva: World Health Organization.

Heise, L. (1998). Violence Against Women: An Integrated Ecological Framework. *Violence Against Women*, 4(262). Retrieved from <http://govaor.net/wp-content/uploads/sites/3/2012/10/Violence-Against-Women-An-Integrated-Ecological-Framework-Heise-1998.pdf>

Prevention
and
equity
Institute
at the center of community well-being



Research Findings – Social Inclusion

- **Social Inclusion:**

- “...policies for economic growth and social inclusion are relevant to policies to prevent rape though this is rarely officially acknowledged.” – European Parliament, *Overview of the worldwide best practices for rape prevention and for assisting women victims of rape*

Social Cohesion – The Flip Side



U. Of Texas-Arlington Fraternity Shut Down After 3 Sexual Assaults Are Reported In Less Than A Month



Peter Jacobs

Sep. 18, 2013, 4:33 PM 5,148 2



Sept. 18, 2014

SHARE

Related Coverage

<https://www.insidehighered.com/news/2015/08/28/sexist-banners-old-dominion-point-practice-many-campuses>

<http://www.businessinsider.com/arlinton-fraternity-shut-down-three-sexual-assaults-2013-9>

CRIME

Police probe whether UWM fraternity members put drugs in party drinks

3 women, 1 man taken to hospital for intoxication; 1 student arrested

By Ashley Luthern and Karen Herzog of the Journal Sentinel

A University of Wisconsin-Milwaukee fraternity is under investigation into whether its members may have slipped "date rape" drugs into alcoholic drinks at a party last weekend.

Prevention
and equity
Institute
at the center of community well-being



What are Neighborhood Factors?

- Collective efficacy =
 - Social cohesion
 - Social control
- Family isolation = stress
- Neighborhood disorder
- Trust in others
- Social networks
- Social support

Social Cohesion and...

- Address multiple neighborhood/ community level factors
- Address multiple levels of the social ecological model



Our Second Guest



Cierra Olivia Thomas-Williams, MA
Prevention Specialist
Indiana Coalition Against Domestic
Violence
(she, her, hers)

ICADV Theory of Change

Relationships are **equitable & non-violent.**

Equitable behavior is the easy, obvious choice.

“Respect is easy”

Abuse is not an option someone feels the need to choose.

“Checking in”

Abuse is not an easily available option for someone to choose.

“Calling out”

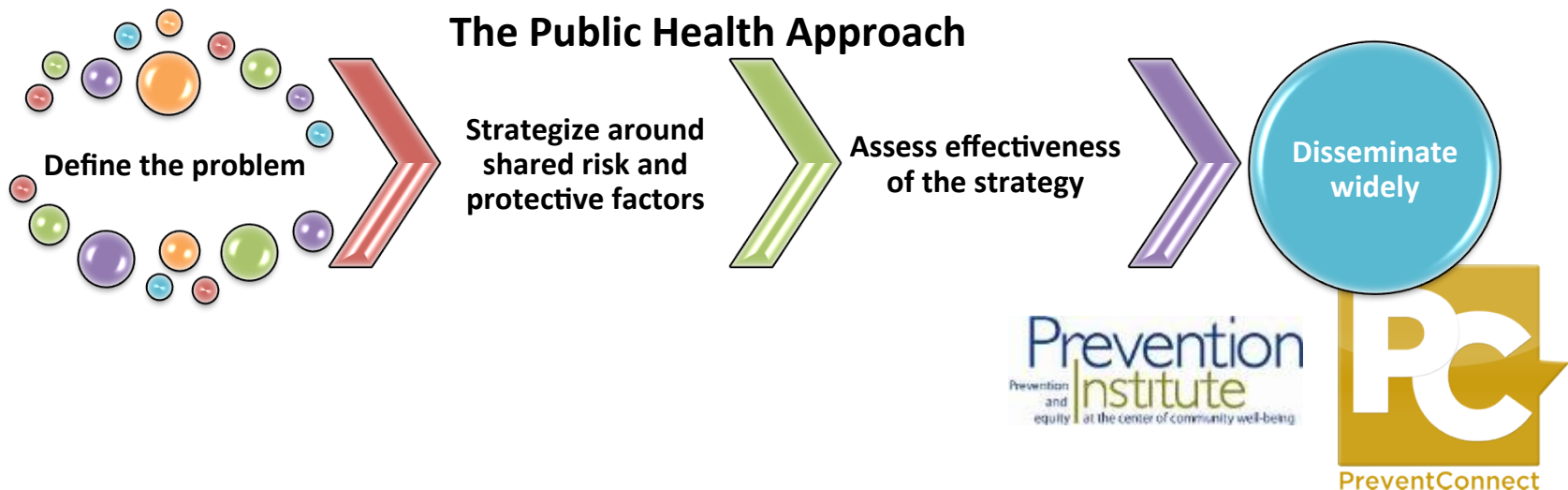
Complimentary Frameworks

Feminism

- Power differential privileges men
- Intersecting forms of oppression
- Patriarchy is root of *inequity* across all systems

Public Health

- Population level problems require population level solutions (roots)
- Lifespan / Environmental
- Determinates of health are roots of health *inequities*

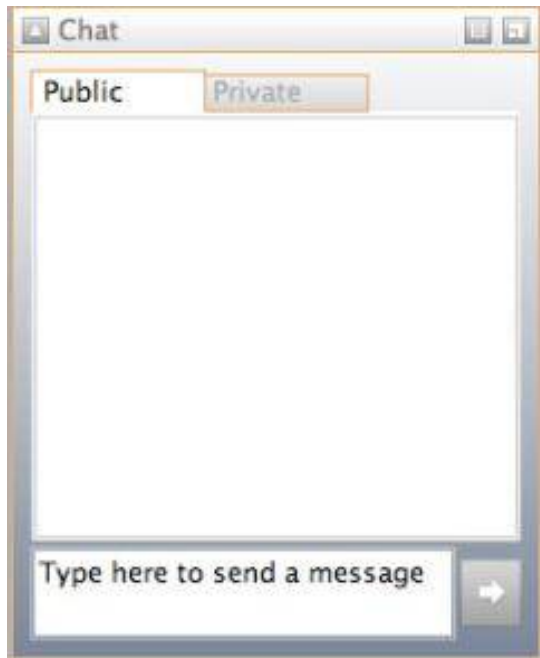


Deciding on Strategy: the 3 E's

- **Effectiveness?** (Will it work?)
- **Efficient?** (Will it impact a broad range?)
- **Ethical?** (Is the responsibility for change located on the shoulders of those with power to enact change?)



Text Chat Question



How do you address **power imbalances** that contribute to SDV as a part of **social cohesion** and **social inclusion** strategies?

The Bloomington Inclusion Collaborative community stakeholders are:



cross-sector
multigenerational
multiplicity of abilities

Services/Advocacy

Education

Mass Transportation

Family (Private sector)

Political /Governmtn.



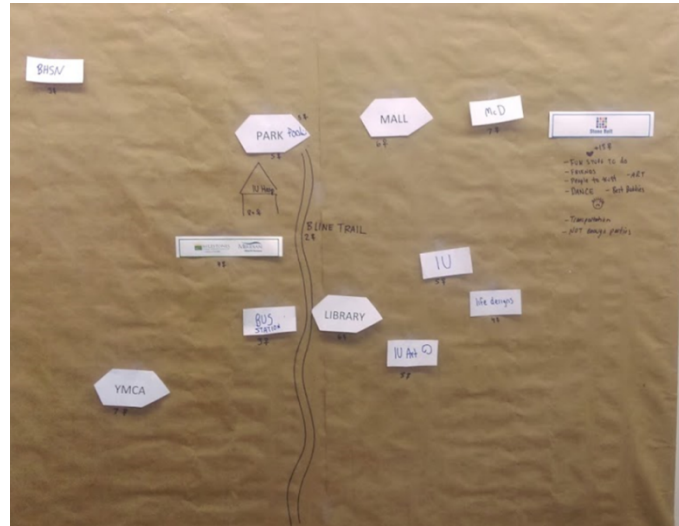
Forms of Assessment

(to determine the barriers to inclusion and support)

- Self-Assessment
- Pre/post working professionals
- Focus group with PWD
- Interviews with care givers on barriers limiting social support for PWD
- Photovoice
- *Participatory social mapping:* PWD and working professionals physically map areas (pre-identified by stakeholders) within the community for inclusion and exclusion



Iterations of Geographic Informational Systems (GIS)



“Maps are more than pieces of paper. They are stories, conversations, lives and songs lived out in a place and are inseparable from the political and cultural contexts in which they are used.” (A. Warren, 2004)

GIS with Google Maps



← Where the Sidewalk Ends

name
Where the Sidewalk Ends

description
Random pole=no wheelchair access



2 photos



**Michael, GIS author
& stakeholder**

Bloomington, Indiana In... 🔍

▼ The goal of the collective is to increase the protective factor of social support/inclusion in organizations and 69 views
[SHARE](#) [EDIT](#) ★

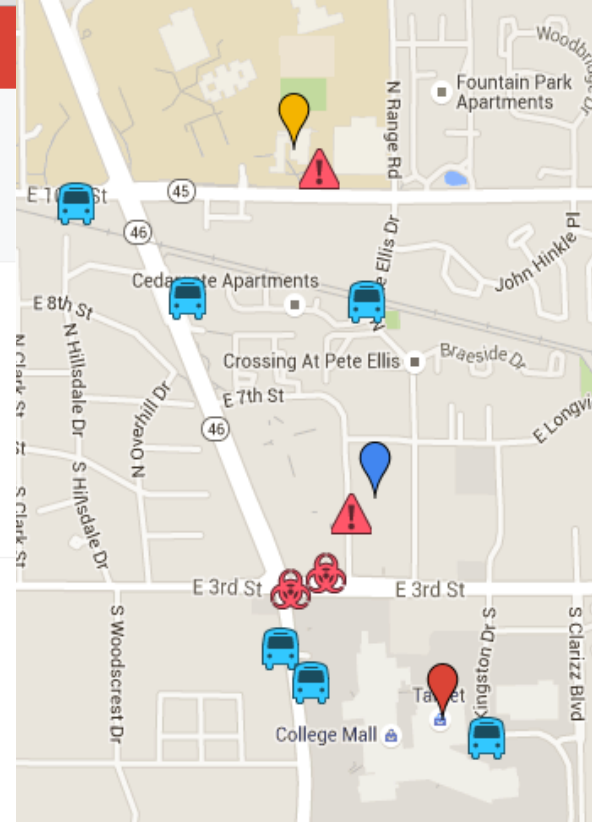
Locations Mapped in 2015

▼

- 📍 Stone Belt
- 🚌 Bloomington Transit
- 📖 Monroe County Public Library
- 🎨 Indiana University Art Museum
- ... 8 more

Geodata from Wikipedia

- 📍 Bloomington, Indiana
- 📍 Barnes and Nobles
- 📍 Target
- 📍 Stone Chase Neighborhood
- ⚠️ No Safe Sidewalks in this shopping center



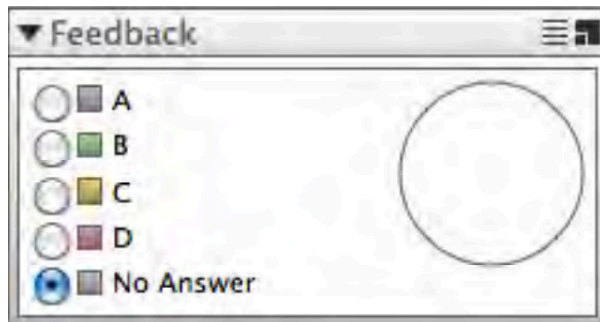
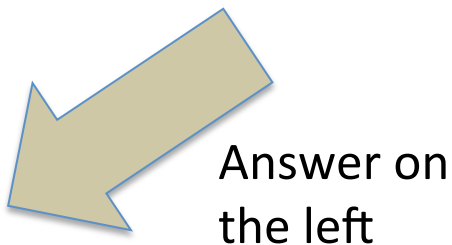
Google “Bloomington Inclusion Collaborative Map” to view it



Please Answer the Polling Question

Have you used participatory mapping in your SDV prevention work?

- A. Never heard of it
- B. Just starting to think about
- C. Done at least one participatory mapping activity
- D. Commonly used practice in my organization



Structural Barriers to Inclusion

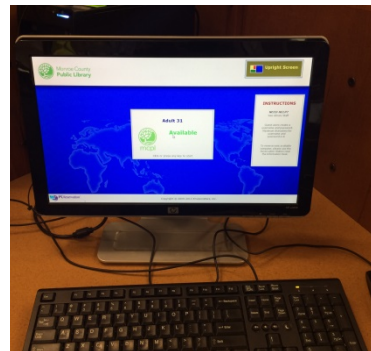
Waiting for the bus

Getting in the door at College Mall

I can't get in to the mall ☹️



Illustrated by "J"



Bloomington Inclusion Collaborative's Project Activities

Active Interventions (behavioral)

- Leadership and Healthy Relationship Training
- Cross-agency collaborative learning
- Systems advocacy
- Self-efficacy

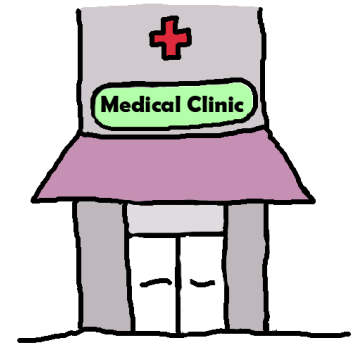
Passive Interventions (environmental)

- Enhanced accessibility at library
- Organizational policies
- Recommendations to the city
- Sidewalk connectivity

Passive interventions make the desired behavior the easy and expected behavior



Why Sidewalks?



Tools and Resources



Photo credit: Emily Barney

www.preventioninstitute.org

Prevention
and
equity | Institute
at the center of community well-being



Resources for Primary Prevention

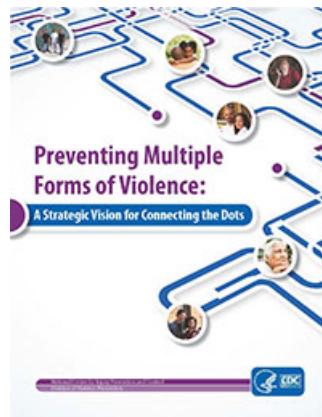
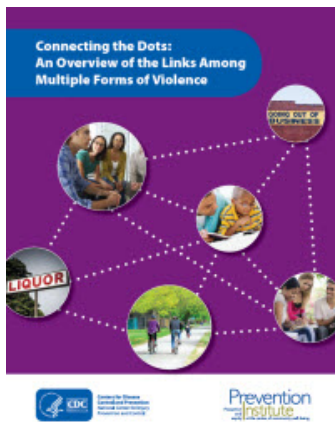
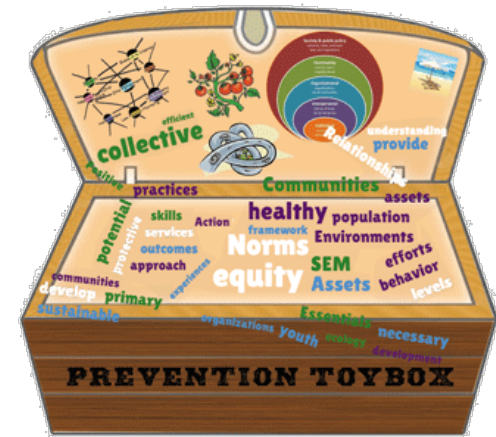
The ICADV Prevention Toybox:

- Available free to agencies wishing to collaborate to prevent violence and increase equity within their communities. Incorporates the public health approach to address social conditions for change.

Download:

<http://www.icadvinc.org/prevention/for-service-providers/prevention-toybox/>

Email us for a hard copy: ICADV@icadvinc.org



- **STOP SV Technical Package**
<http://www.cdc.gov/violenceprevention/pub/technical-packages.html>
- **Connecting the Dots**
http://www.cdc.gov/violenceprevention/pub/connecting_dots.html
- **Connecting the Dots Strategic Vision**
http://www.cdc.gov/violenceprevention/pdf/strategic_vision.pdf

Prevention
and
equity
Institute
at the center of community well-being



221 Oak Street
Oakland, CA 94607
Tel: (510) 444-7738

Prevention Institute

Follow us on:



PreventConnect
1215 K Street
Suite 1850
Sacramento CA
95814

Website: preventconnect.org

Email: info@preventconnect.org

Email Group:

preventconnect.org/email-group

eLearning: learn.preventconnect.org

Wiki: wiki.preventconnect.org



preventconnect.org/Facebook

preventconnect.org/Twitter

preventconnect.org/Flickr

preventconnect.org/YouTube

preventconnect.org/LinkedIn

preventconnect.org/Pinterest

