

Welcome, this web conference will begin soon



 WEB CONFERENCE

WHAT SURROUNDS US SHAPES US

Greening and other physical/
built environment strategies for
preventing sexual and
domestic violence

Thursday, June 6, 2019

11:00AM PT | 2:00PM ET



Meet the PreventConnect Team



Ashleigh Klein-Jimenez

Project Manager
she/her/hers



Tori VandeLinde

Training and Technical Assistance Specialist
she/her/hers



prevent
connect

PreventConnect.org

info@PreventConnect.org

PreventConnect.org/email – **email group**

Learn.PreventConnect.org – **eLearning**

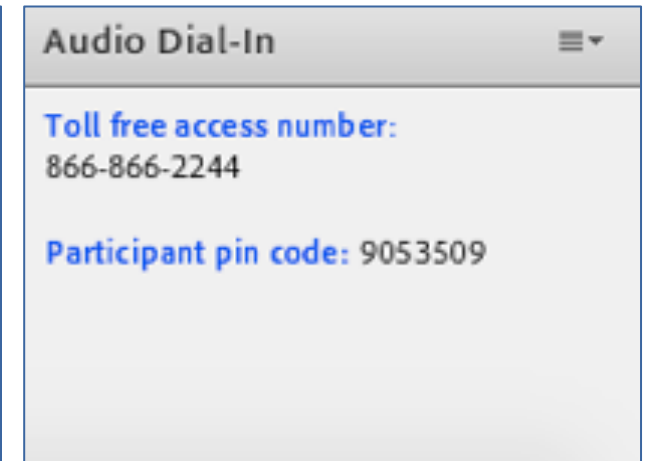
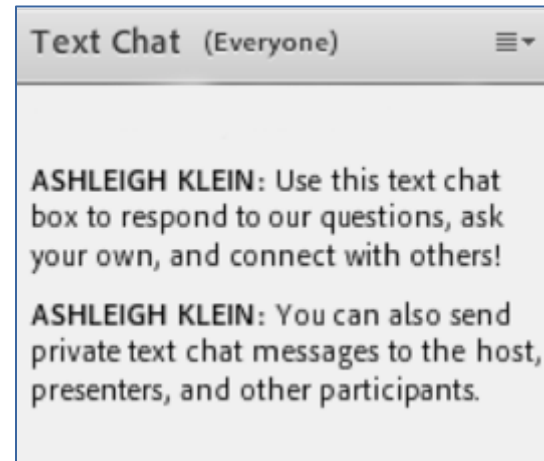
Follow Us

twitter.com/PreventConnect

facebook.com/PreventConnect

How to use Adobe Connect

- ▶ Text chat and private chat
 - ▶ Please send a private chat message for help.
- ▶ PowerPoint Slides
- ▶ Polling Questions
- ▶ Phone
- ▶ Closed Captioning
- ▶ Web Conference Guidelines



Contact Adobe Connect support at:

<https://helpx.adobe.com/adobe-connect/connect-support.html>

PreventConnect

- ▶ Domestic violence/intimate partner violence
- ▶ Sexual violence
- ▶ Violence across the lifespan, including child sexual abuse
- ▶ Prevent before violence starts
- ▶ Connect to other forms of violence and oppression
- ▶ Connect to other prevention practitioners

Past conferences/resources

FROM A CYCLE OF VIOLENCE TO A CULTURE OF SAFETY AND EQUITY

Web Conference **GUEST PROFILES**

Available Now
PreventConnect.org



PREVENTION
INSTITUTE



What surrounds us shapes us: Greening and other physical/built environment strategies for preventing sexual and domestic violence

Thursday June 6th, 2019

11 AM-12:30 PM PT / 2 PM-3:30 PM ET

PreventConnect is a national project of the California Coalition Against Sexual Assault sponsored by the U.S. Centers for Disease Control and Prevention. The views and information provided in this web conference do not necessarily represent the official views of the U.S. government, CDC or CALCASA.



Meet the Prevention Institute Team



Alisha Somji

Associate Program Manager
she/her/hers



Abena Asare

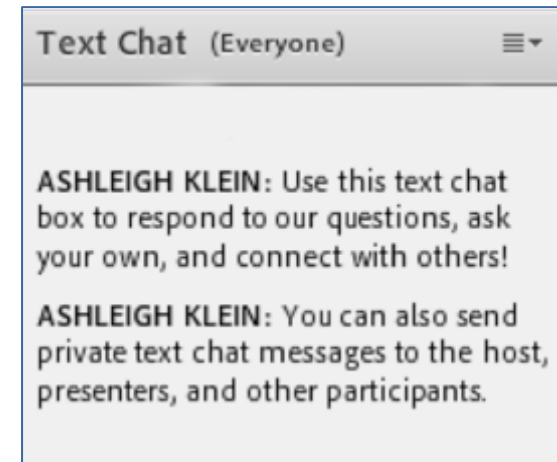
Program Assistant
she/her/hers

Objectives

- ▶ Describe the connections between the physical/built environment and multiple forms of violence, including sexual and domestic violence.
- ▶ Highlight local strategies that communities are operationalizing for prevention.
- ▶ Identify roles that the field of sexual and domestic violence prevention can play in environmental strategies.
- ▶ Engage in a candid discussion on transforming the physical/built environment for prevention

How familiar are you with the connections between sexual and domestic violence prevention and improving the physical/built environment?
Why did you decide to join us today?

Use the Text Chat feature to answer the question.



Meet our guest from the National Resource Center on Domestic Violence

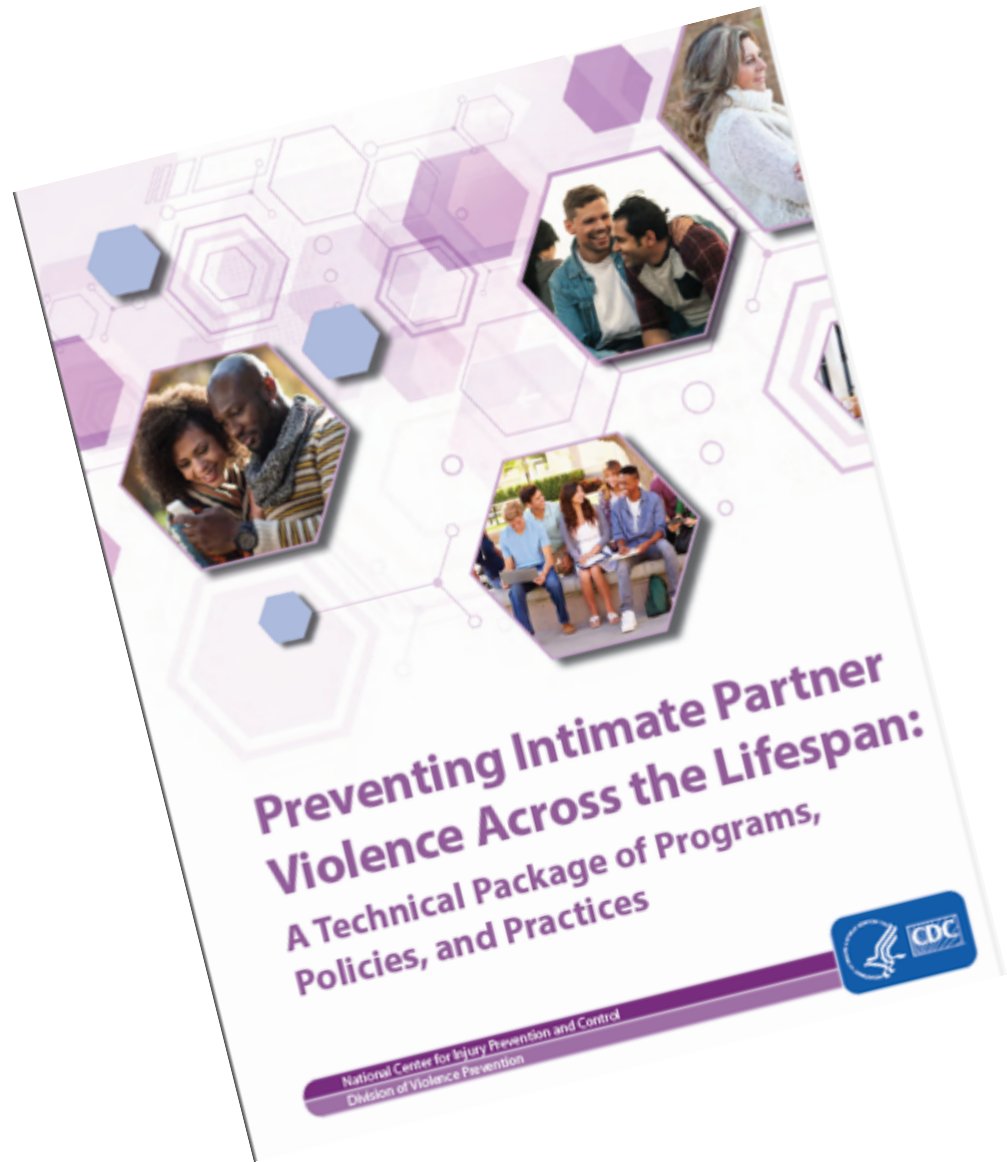


Anne Menard

Executive Director

National Resource Center on Domestic Violence
(NRCDV)

she/her/hers



What prevents IPV from happening in the first place or lessens harms when it does?

**CDC released its 4th
Violence Prevention
Technical Package in May
2017**



Strategies: direction or actions to achieve the goal of preventing violence

Approaches: specific ways to advance the strategy (programs, practices, and policies)

Evidence: for each approach in preventing violence or impacting its associated risk and protective factors

Preventing Intimate Partner Violence Across the Lifespan

Strategy	Approach
Teach safe and healthy relationship skills	<ul style="list-style-type: none"> • Social-emotional learning programs for youth • Healthy relationship programs for couples
Engage influential adults and peers	<ul style="list-style-type: none"> • Men and boys as allies in prevention • Bystander empowerment and education • Family-based programs
Disrupt the developmental pathways toward partner violence	<ul style="list-style-type: none"> • Early childhood home visitation • Preschool enrichment with family engagement • Parenting skill and family relationship programs • Treatment for at-risk children, youth and families
Create protective environments	<ul style="list-style-type: none"> • Improve school climate and safety • Improve organizational policies and workplace climate • Modify the physical and social environments of neighborhoods
Strengthen economic supports for families	<ul style="list-style-type: none"> • Strengthen household financial security • Strengthen work-family supports
Support survivors to increase safety and lessen harms	<ul style="list-style-type: none"> • Victim-centered services • Housing programs • First responder and civil legal protections • Patient-centered approaches • Treatment and support for survivors of IPV, including TDV

STRATEGY #6: Create protective environments

EVIDENCE-INFORMED APPROACHES:

- Improve school climate and safety
- Improve organizational policies and workplace climate
- Modify the physical and social environments of neighborhoods

“Evidence suggests that changing or modifying environmental characteristics of neighborhoods may be an effective approach for preventing IPV.”



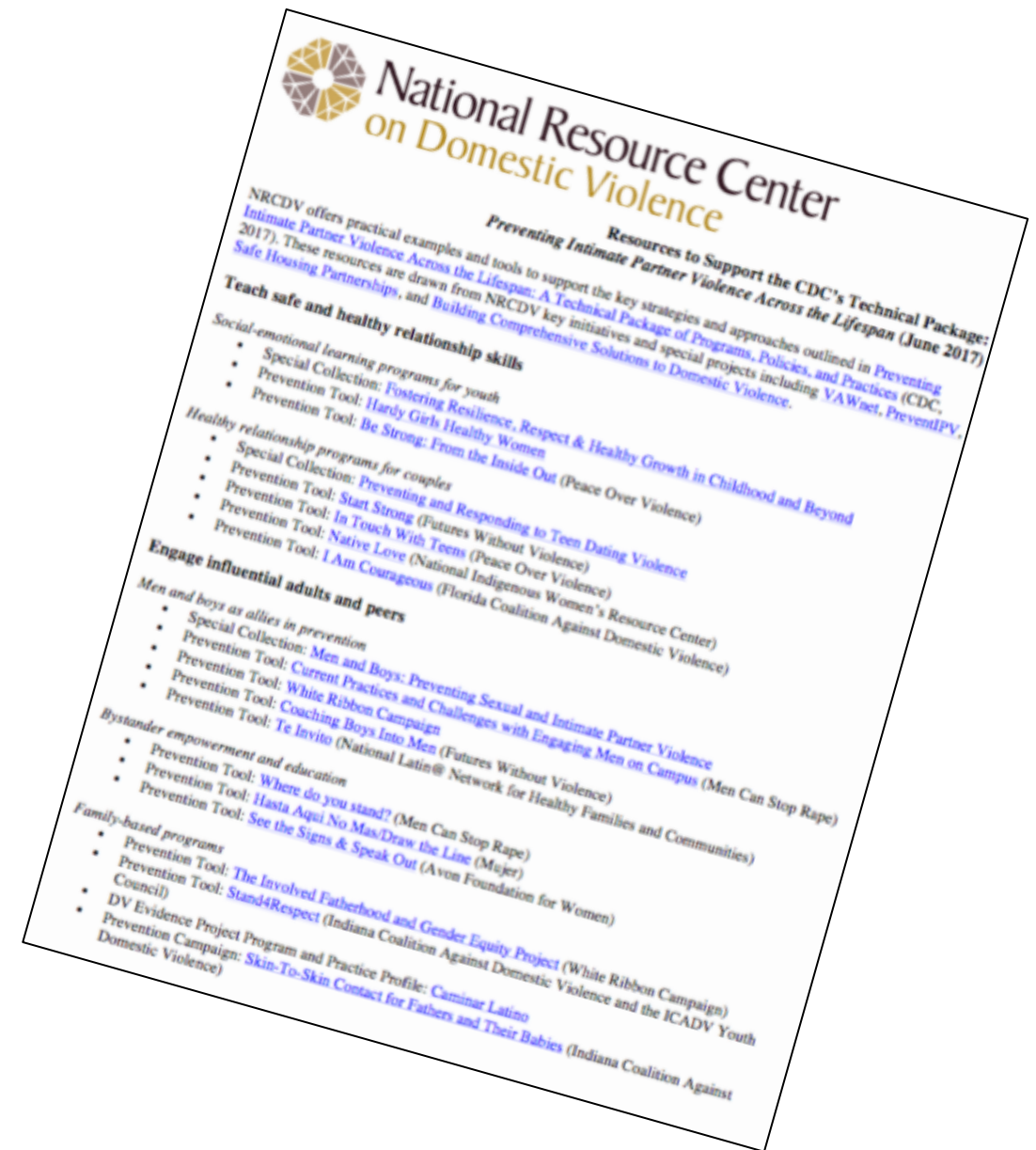
PreventConnect.org

→ IPV Technical Package

Resources

PreventIPV.org

→ IPV Technical Package



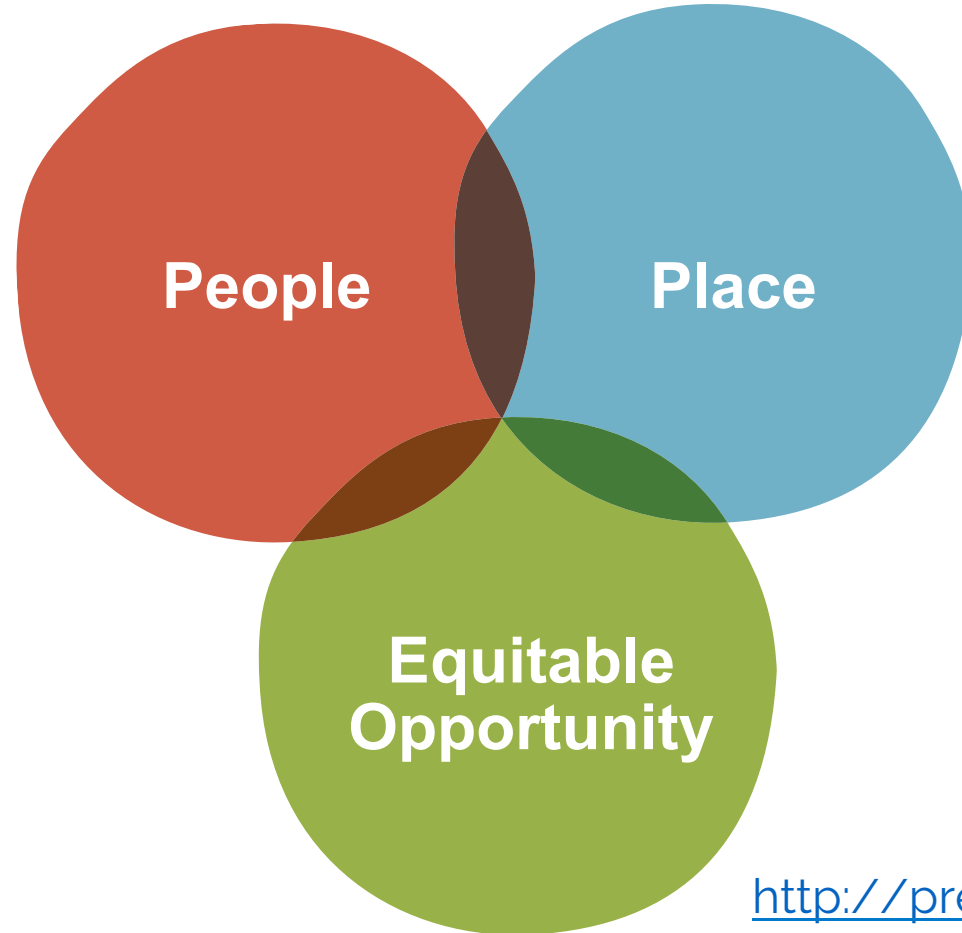
What Surrounds Us, Shapes Us



Link to recording:

[http://
www.preventconnect.org/
2017/07/a-safe-place-to-call-
home-transforming-the-
physicalbuilt-environment-for-
sexual-and-domestic-violence-
prevention/](http://www.preventconnect.org/2017/07/a-safe-place-to-call-home-transforming-the-physicalbuilt-environment-for-sexual-and-domestic-violence-prevention/)

THRIVE Clusters



<http://preventioninstitute.org/tools/thrive-tool-health-resilience-vulnerable-environments>

THRIVE Factors

People



Social networks
& trust



Participation &
willingness to act for
the common good



Norms &
culture



Education



Living wages &
local wealth

Place



What's sold
& how it's
promoted



Look, feel,
& safety



Housing



Parks &
open space



Air, water
& soil



Getting
around

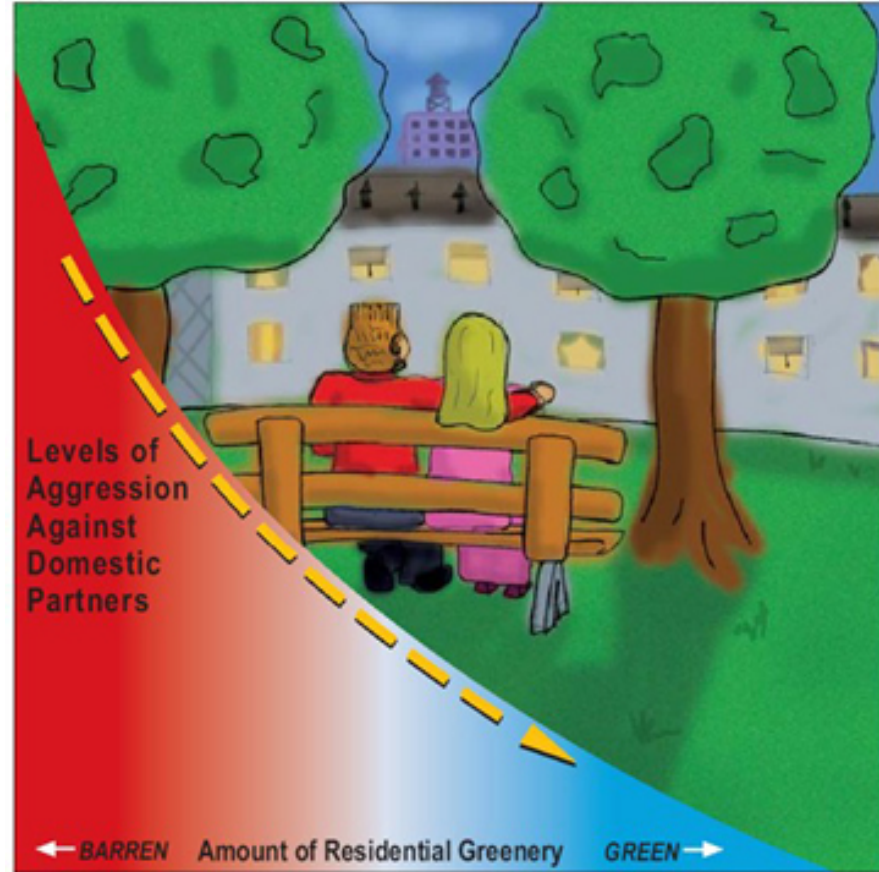


Arts & cultural
expression

Vegetation and Violence: A study by Frances Kuo and William Sullivan

Cooler in the Shade

Aggression and Violence are Reduced with Nature Nearby



▶ **Pathways:**

- ▶ The study found a clear link between green surroundings and reduced mental fatigue
- ▶ The study also found that residents with less mental fatigue reported less aggression and violence against partners

<http://lhl.illinois.edu/violence.htm>

Benefits of Green Spaces and Parks

Evidence Rating



Some Evidence

Expected Beneficial Outcomes (Rated)

- Increased physical activity

Other Potential Beneficial Outcomes

- Reduced obesity rates
- Improved mental health
- Reduced crime
- Reduced stress
- Improved birth outcomes



Clean, green public spaces make us happier, study finds

In areas of Philadelphia below the poverty line, residents reported a 70 percent drop in depression after public spaces were cleaned and greened.

<http://www.countyhealthrankings.org/take-action-to-improve-health/what-works-for-health/policies/green-space-parks>

<https://www.nbcnews.com/health/health-news/clean-green-public-spaces-make-us-happier-study-finds-n893181>

Meet Our Guests from the Michigan Coalition to End Domestic and Sexual Violence



Amanda Barratt
Program Manager
[she./her/hers](#)



Phalguna Siddapureddy
Community Organizer
[she./her/hers](#)



Jessica Edel Harrelson
Empowerment
Evaluator and Program
Director
[she./her/hers](#)

Connecting greening and intimate partner violence in Michigan

Risk & Protective Factors

- ▶ Risk: low social capital, harmful gender norms, low collective efficacy, poverty
- ▶ Protective: community norms intolerant of IPV

Outer Levels of the SEM



Goals for Greening

How did we choose the locations?

- ▶ We chose three locations based on high alcohol outlet density and high utilization of predatory payday lending
- ▶ Redefining greening: rural vs urban areas

What do we want in each city?

- ▶ Community led efforts
- ▶ Strong partnerships
- ▶ Sustainability

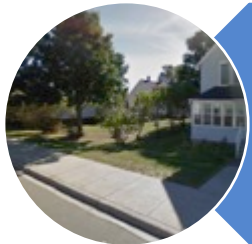
Locations of focus



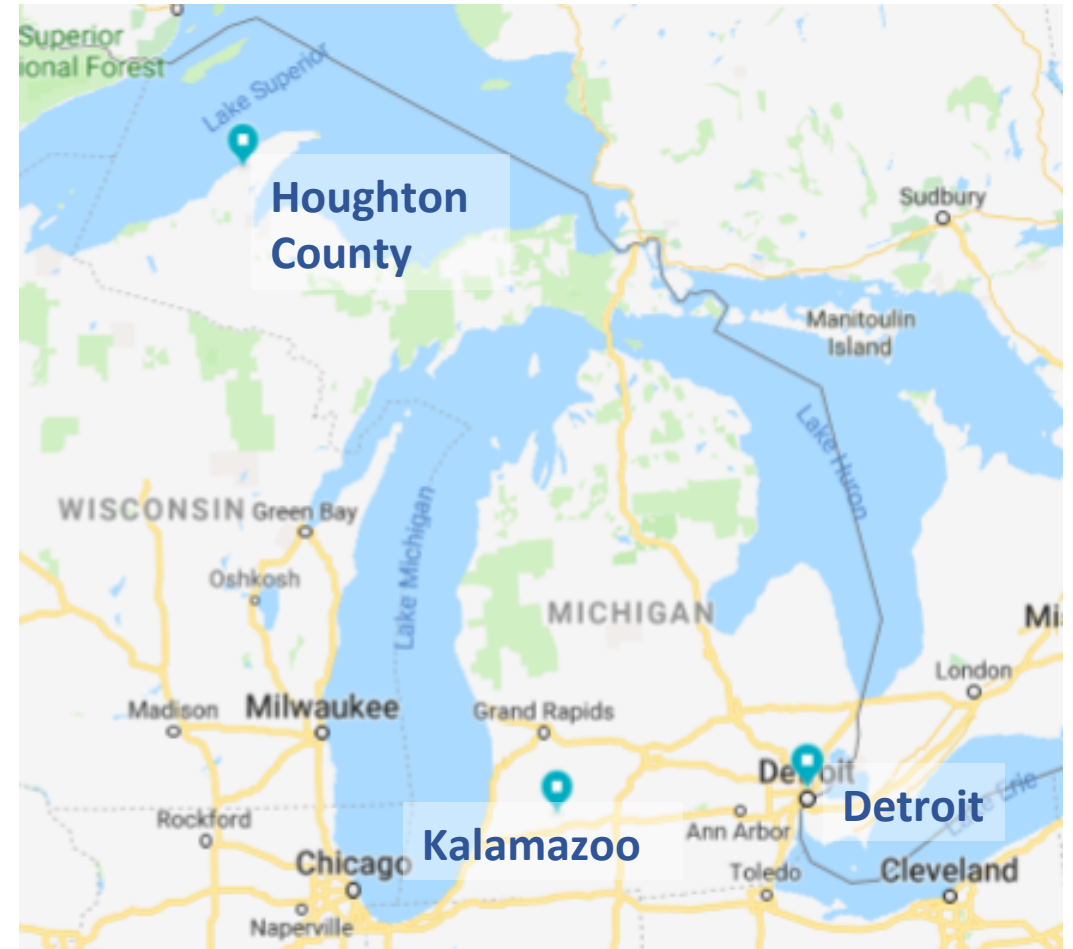
Detroit (year 1)



Kalamazoo (year 2)



Houghton County
(year 3)



Zooming in on community organizing in Detroit

Types of Greening Partners in Detroit

- ▶ City of Detroit Parks and Recreation Efforts- Revitalization of local parks,
- ▶ Community Development Agencies
- ▶ Community Members
- ▶ Urban Gardening Groups
- ▶ Other

Types of Activities

- ▶ Urban Gardens
- ▶ Park renovations
- ▶ Safety improvements
- ▶ Maintenance & care
- ▶ Greening revitalization
- ▶ Flood prevention/rain gardens

City Of Detroit Parks & Recreation's Efforts



Park Revitalized by the City-
Stein Park



City Of Detroit Parks & Recreation's Efforts



Park Planned for Revitalization in 2019-
Stoepel Park Number 1

Community Member Lead Efforts in Detroit



Creating Spaces in Detroit

Urban Gardening in Detroit



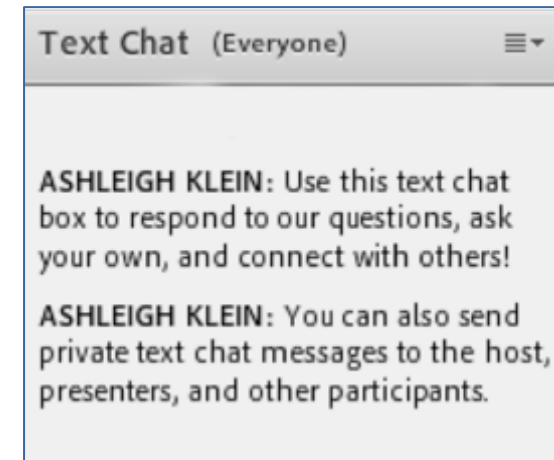
Peace Tree Parks

Evaluation indicators



What are prevention practitioners' roles in improving the physical/built environment?
What added-value could you offer to greening efforts?

Use the Text Chat feature to answer the question.



The role of sexual and domestic violence prevention practitioners in greening

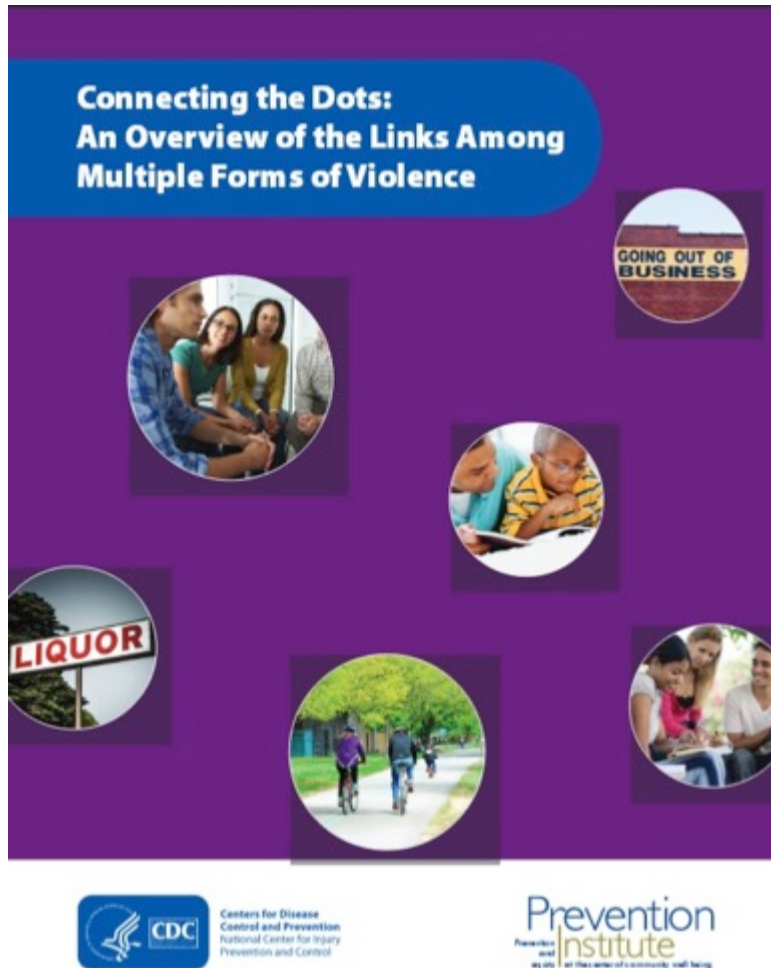
- ▶ Helping SV/IPV agencies understand risk and protective factors
- ▶ Helping all people understand risk & protective factors
- ▶ Helping fill gaps such as research, toolkit & material creation, and social marketing campaigns
- ▶ Identify resources
- ▶ Growing partnerships
- ▶ Community organizing

Challenges & Barriers to Greening

- ▶ Funding
- ▶ Seasons in Michigan
- ▶ There are many needs that are not being met and greening may not be the biggest priority



CDC's Connecting the Dots



- ▶ We know from Connecting the Dots that community violence is a risk factor for child maltreatment, sexual violence, youth violence and bullying
- ▶ We also know that poor neighborhood support and cohesion is a risk factor for intimate partner violence

https://www.cdc.gov/violenceprevention/pub/connecting_dots.html

Meet Our Guests in Salinas, California



Linda McGlone

STRYVE Youth Violence Prevention Program,
Monterey County Health Department
she/her/hers



Gabriela Manzo

Youth Equity Organizer,
Building Healthy Communities
she/her/hers

Input from diverse sectors: Coalition Building



Problem of Violent Crime in Salinas in 2011

City	Crime rate (per 100,000)
Los Angeles	522.4
Oakland	1,682.7
Salinas	732.5
San Francisco	659.3
San Jose	335.0

Source: Federal Bureau of Investigation – Uniform Crime report

Area of focus: “The Alisal” zip code 93905

- ▶ Poverty and housing instability
- ▶ Poor neighborhood cohesion
- ▶ High rates of gang violence and homicides



Strong families and high expectations



Salinas, California - “The Salad Bowl of the World”



- ▶ Total population: 150,889
- ▶ Young: Median age is 30.1
- ▶ Population is 77% Latino, with majority coming from Mexico

Source: U.S. Census Bureau, 2012-2016 American Community Survey 5-Year Estimates for 2016

Crime Prevention through Environmental Design (CPTED)

- ▶ Community level change
- ▶ Impacts the built and social environments
- ▶ Partnering with Building Healthy Communities (BHC)



Building Healthy Communities

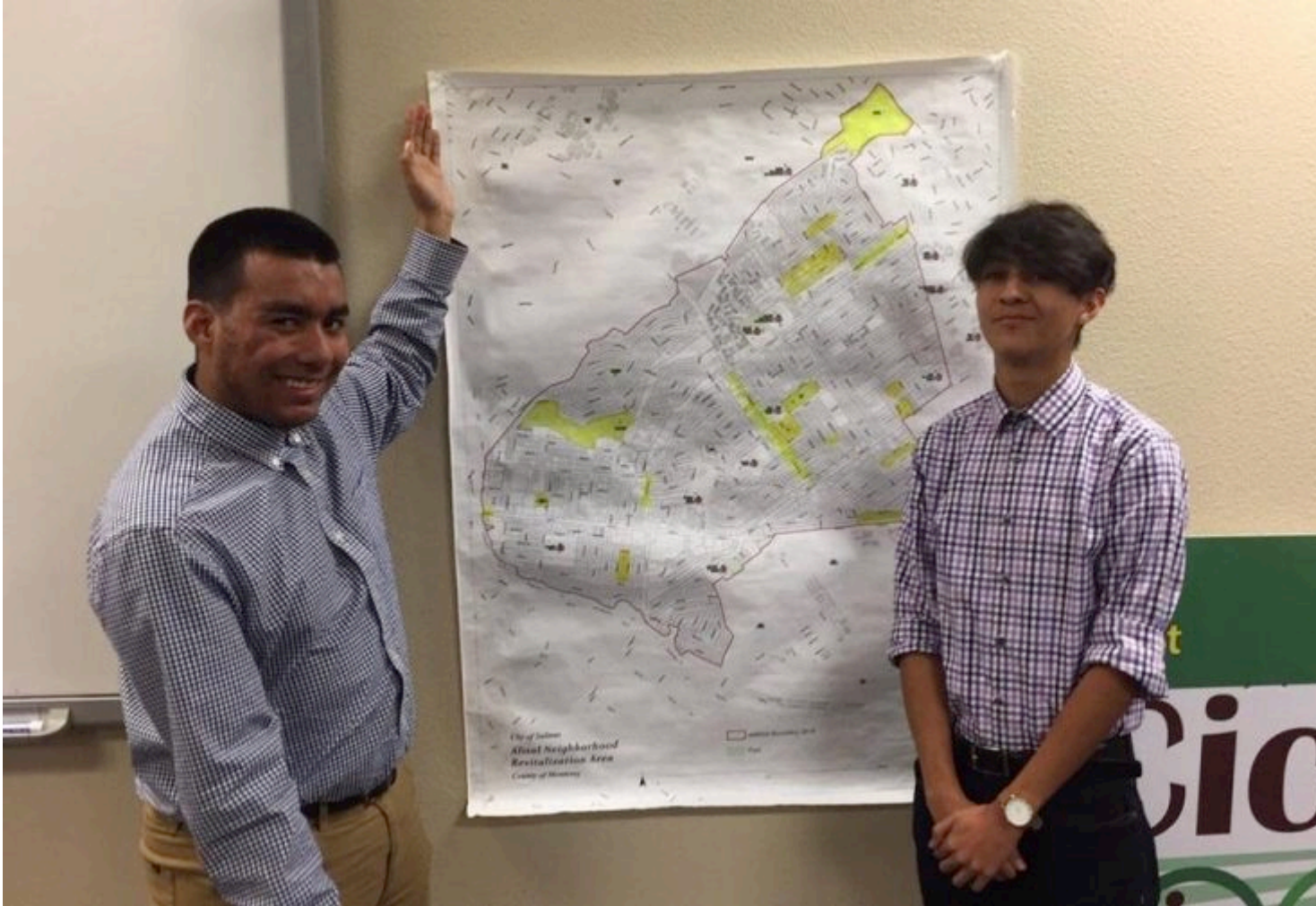


Bringing resident voices to the forefront of city decision making



 **ALISAL** Vibrancy Plan
PART OF VISIÓN SALINAS

Resident and Youth Leadership



- ▶ Interns help lead the work
- ▶ Questions for community members:
 - ▶ How can we improve community safety?
 - ▶ How can we create a healthier and more vibrant Alisal corridor?

<https://alisaltrojantribune.com/1667/uncategorized/cpted-salinas-creating-a-safer-city/>

Acosta Plaza - visibility



Improved lighting prevents violence



Trees and shrubs are trimmed to eliminate hiding places



Safe places suggest who is welcome and how they can enter.



Changing norms in public spaces



Art, murals and signs show pride.



Inequity of neglect



The Broken Window Theory: Safe places are well maintained



Gathering places help residents build neighborhood cohesion





Ciclovía Salinas



Where the Streets are Yours! ¡Donde las Calles son Suyas!

Neighborhood offers green space, access to goods and services

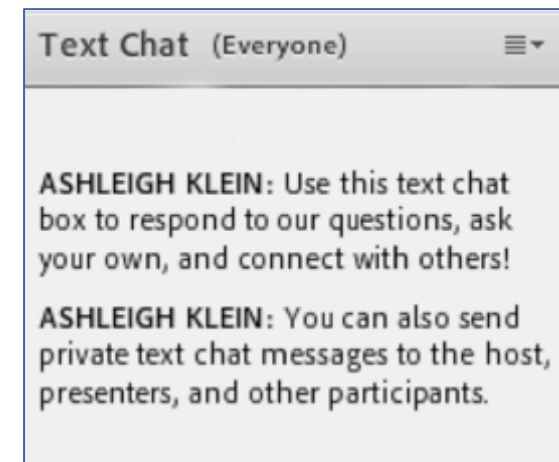


Places for residents to solve problems and get to know each other



How might you adapt some of these principles to prevent gender-based violence?

Use the Text Chat feature to answer the question.



Bringing a Gender Lens to Placemaking



University of Kentucky
UKnowledge

CRVAV Faculty Journal Articles

Center for Research on Violence Against Women

2005

Reducing Private Violence against Women in Public Housing: Can Second Generation CPTED Make a Difference?

Walter S. DeKeseredy
Ontario Institute of Technology, Canada

Alvi Shahid
Ontario Institute of Technology, Canada

Claire M. Renzetti
St. Joseph's University, claire.renzetti@uky.edu

Martin D. Schwartz
Ohio University

https://uknowledge.uky.edu/cgi/viewcontent.cgi?referer=https://www.google.com/&httpsredir=1&article=1305&context=crvaw_facpub

Original Article

Toward a gendered Second Generation CPTED for preventing woman abuse in rural communities

Walter S. DeKeseredy^{a*}, Joseph F. Donnermeyer^b and Martin D. Schwartz^c
^aCriminology, Justice and Policy Studies, University of Ontario Institute of Technology, Oshawa, Ontario L1H 7K4, Canada.
E-mail: Walter.dekeseredy@uoit.ca
^bRural Sociology Program, The Ohio State University, Columbus, Ohio 43210-1067, USA.
^cSociology and Anthropology, Ohio University, Athens, Ohio 45701, USA.

*Corresponding author.

Abstract Informed by several studies of woman abuse in rural settings, the main objective of this paper is to discuss how key principles of Second Generation Crime Prevention Through Environmental Design (CPTED) can be applied to help design appropriate community-based prevention strategies for improving the security of women living in rural places from abuse by spouses and partners in both ongoing and terminated relationships. The gender-sensitive version of CPTED recognizes that communities are contested places where differing strands of values, norms, beliefs and tolerance for crime influence the security of rural women. Hence, some forms of social organization or collective efficacy (not social disorganization) may promote and condone rural woman abuse, and other forms serve to prevent and deter it. We propose a Second Generation CPTED framework that considers the utilization of four main strategies, each tailored to directly address feminist concerns and enhance a locality's collective efficacy to increase women's security: community culture; connectivity and pro-feminist masculinity; community threshold and social cohesion. *Security Journal* (2009) 22, 178–189. doi:10.1057/sj.2009.3; published online 13 April 2009

Keywords: violence; rural; CPTED; gender

https://www.researchgate.net/publication/247477509_Toward_a_gendered_Second_Generation_CPTED_for_preventing_woman_abuse_in_rural_communities



Women's safety audits and the 7 principles of design for women's safety



1. Know where you are (signage, signals, orientation)



2. See and be seen (visibility, lighting, hiding places)



3. Hear and be heard (rush hour, peak circulation, social use of space)



4. Be able to get away (formal/informal surveillance, access to emergency services)



5. Live in a clean and welcoming environment (design, access, and maintenance)



6. Work together (community participation by the appropriation of public space)

Link to recording:
<http://www.preventconnect.org/2017/07/a-safe-place-to-call-home-transforming-the-physicalbuilt-environment-for-sexual-and-domestic-violence-prevention/>

Evaluation – Salinas CA

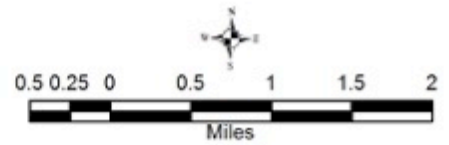
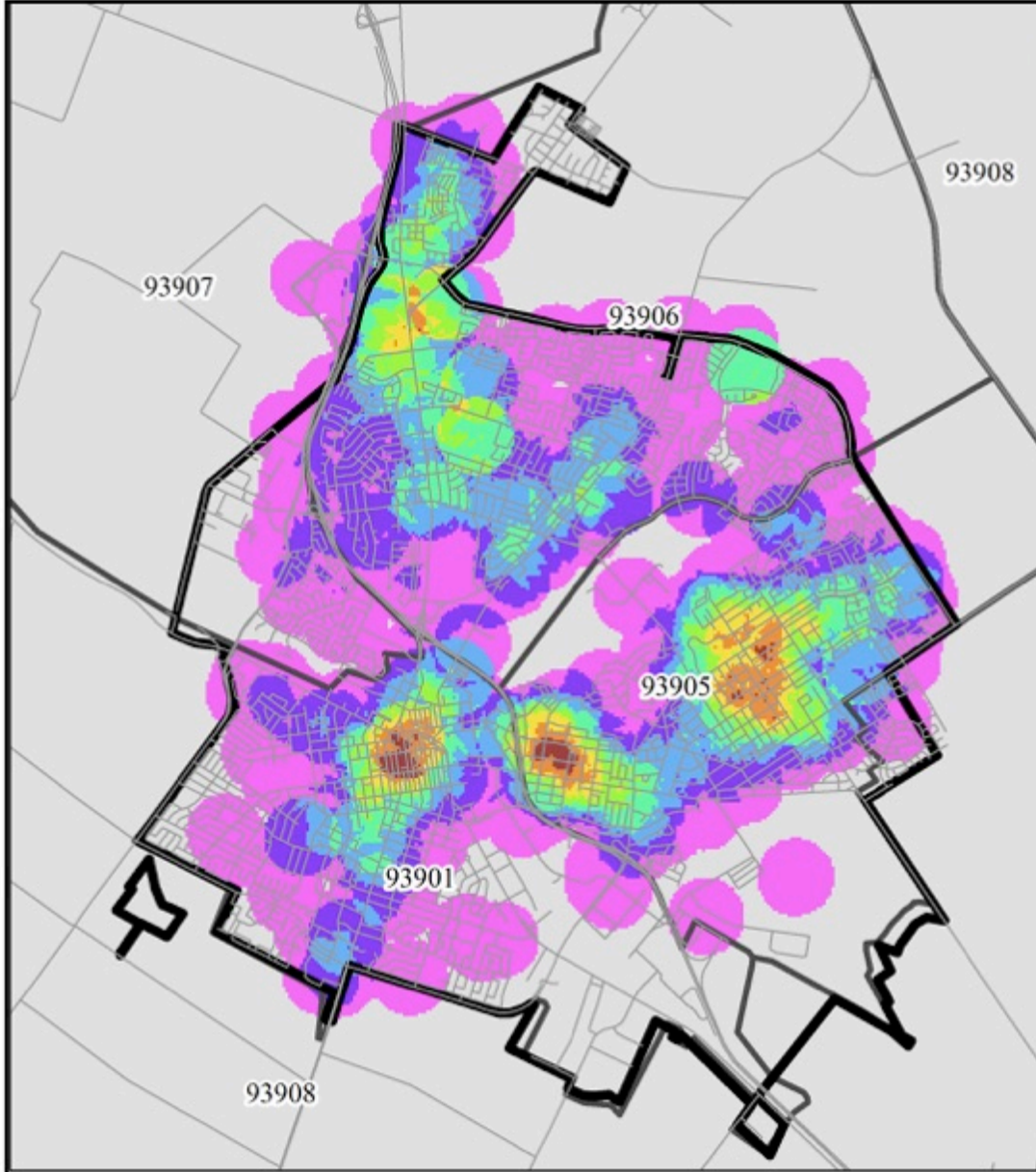
- ▶ ↓ Significant decline in violent crime rate (murder, aggravated, assault, robbery and rape)
- ▶ ↑ Significant increase in social cohesion among youth in cohort study in area of focus
- ▶ ↓ Declines in the density of violent assaults of youth, using the hotspot mapping of police data.

Youth-Involved Violent Crimes 2011 in Salinas CA
2011 Salinas Police Department Crime Reports.



Legend

- Streets
- ▭ City Boundary
- Violent Assaults for 2011**
- Per Square Mile -Jenks Natural Breaks**
- No Color = Below Threshold Value
- 5 - 25
- 25 - 45
- 45 - 66
- 66 - 86
- 86 - 106
- 106 - 127
- 127 - 152
- 152 - 184
- ZIP Code Areas



Youth-Involved Violent Crimes 2015 in Salinas CA

2015 Salinas Police Department Crime Reports



Legend

— Streets

▭ City Boundary

Violent Assaults for 2015

Per Square Mile - Jenks Natural Breaks

□ No Color = Below Threshold Value

■ >5 - 30

■ >30 - 50

■ >50 - 76

■ >76 - 97

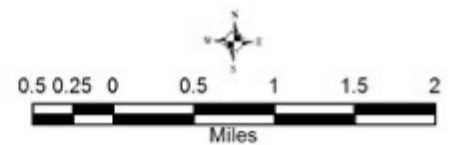
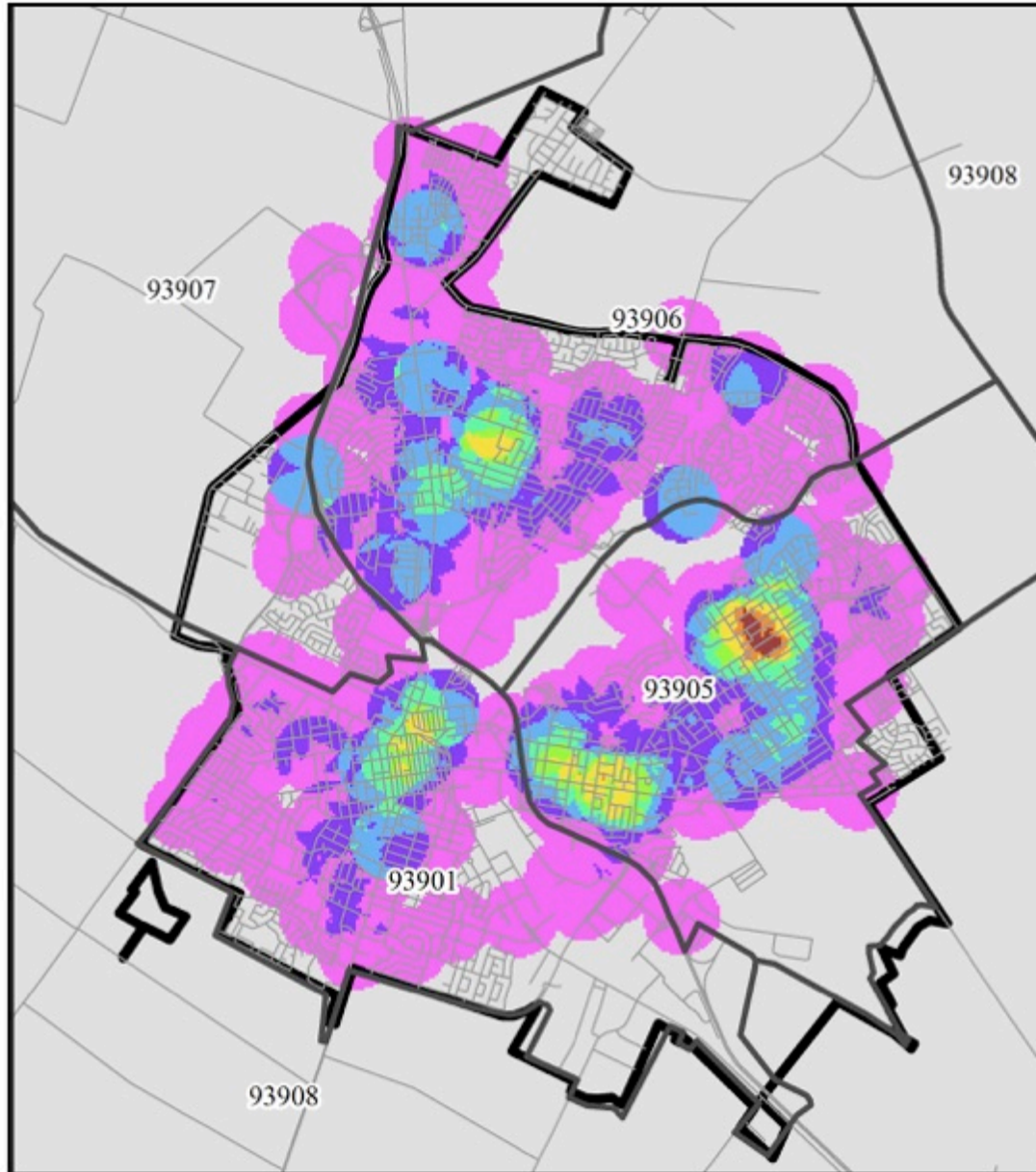
■ >97 - 117

■ >117 - 142

■ >142 - 167

■ >167 - 203

▭ ZIP Code Areas



Tips from Michigan

- ▶ Greening may require government involvement-this takes time
- ▶ Make time for relationship-building
- ▶ Importance of community-led work



Tips from California

- ▶ Recognize the environmental factors – both physical and social – that influence violence.
- ▶ Be willing to follow the community and let resident leaders show you the way.
- ▶ Resource:
 - ▶ CPTED Neighborhood Assessments in English and Spanish
<https://documentcloud.adobe.com/link/track?uri=urn%3Aaaid%3Ascids%3AUS%3Ab813494e-02ae-41f7-94c2-7c3efa5336eb>

Tools and Resources



Community Safety By Design – Prevention Institute

- ▶ Video and report:

<https://www.preventioninstitute.org/publications/community-safety-design>



2017 PreventConnect Recording



Link to recording:

<http://www.preventconnect.org/2017/07/a-safe-place-to-call-home-transforming-the-physicalbuilt-environment-for-sexual-and-domestic-violence-prevention/>



PREVENTION
I N S T I T U T E

PreventionInstitute.org

alisha@preventioninstitute.org – Alisha

Follow Us

twitter.com/preventioninst

facebook.com/PreventionInstitute.org



prevent
connect

PreventConnect.org

info@PreventConnect.org

PreventConnect.org/email – email group

Learn.PreventConnect.org – eLearning

Follow Us

twitter.com/PreventConnect

facebook.com/PreventConnect