

Welcome, this web conference will begin soon

 WEB CONFERENCE

Monday,
September 30

11:00AM PT
2:00PM ET



CHEERS

To Creating Protective Environments

Sexual and Intimate Partner Violence Prevention
in Bars and Alcohol-Serving Establishments

Meet the PreventConnect Team



Ashleigh Klein-Jimenez

Project Manager
she/her/hers



Tori VandeLinde

Training and Technical Assistance Specialist
she/her/hers



prevent
connect

PreventConnect.org

info@PreventConnect.org

PreventConnect.org/email – email group

Learn.PreventConnect.org – eLearning

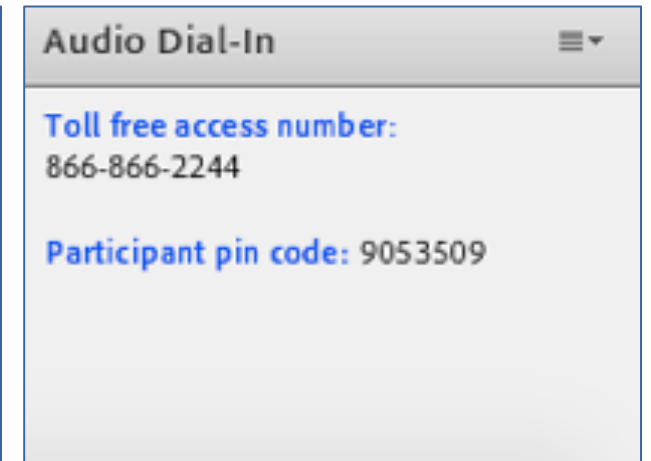
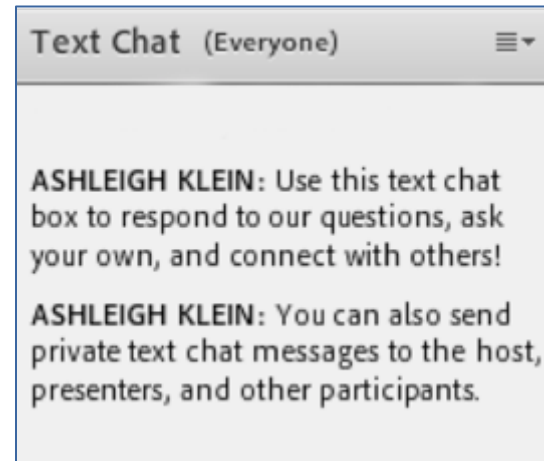
Follow Us

twitter.com/PreventConnect

facebook.com/PreventConnect

How to use Adobe Connect

- ▶ Text chat and private chat
 - ▶ Please send a private chat message for help.
- ▶ PowerPoint Slides
- ▶ Polling Questions
- ▶ Phone
- ▶ Closed Captioning
- ▶ Web Conference Guidelines



Contact Adobe Connect support at:

<https://helpx.adobe.com/adobe-connect/connect-support.html>

PreventConnect

- ▶ Domestic violence/intimate partner violence
- ▶ Sexual violence
- ▶ Violence across the lifespan, including child sexual abuse
- ▶ Prevent before violence starts
- ▶ Connect to other forms of violence and oppression
- ▶ Connect to other prevention practitioners

CHEERS

To Creating Protective Environments



PreventConnect is a national project of the California Coalition Against Sexual Assault sponsored by the U.S. Centers for Disease Control and Prevention. The views and information provided in this web conference do not necessarily represent the official views of the U.S. government, CDC or CALCASA.



Objectives

- ▶ Describe the unique challenges and opportunities bar environments have and their implications for sexual and intimate partner violence prevention
- ▶ Identify strengths and limitations for sexual and intimate partner violence prevention practitioners working in bars and other alcohol-serving establishments
- ▶ Engage in a discussion about best-practices for creating protective environments to prevent sexual and intimate partner violence

Polling Question

Past Web Conferences



<http://www.preventconnect.org/2018/04/addressing-access-to-alcohol-and-alcohol-environments-for-sexual-and-domestic-violence-prevention/>

Mapping Alcohol Outlet Density



Density of Off-sale Alcohol Outlets

● Off-sale alcohol outlet*

* Off-sale alcohol outlets are retail establishments authorized to sell beer, wine and/or distilled spirits for consumption off the premises where sold.

0 0.5 1 2 Miles

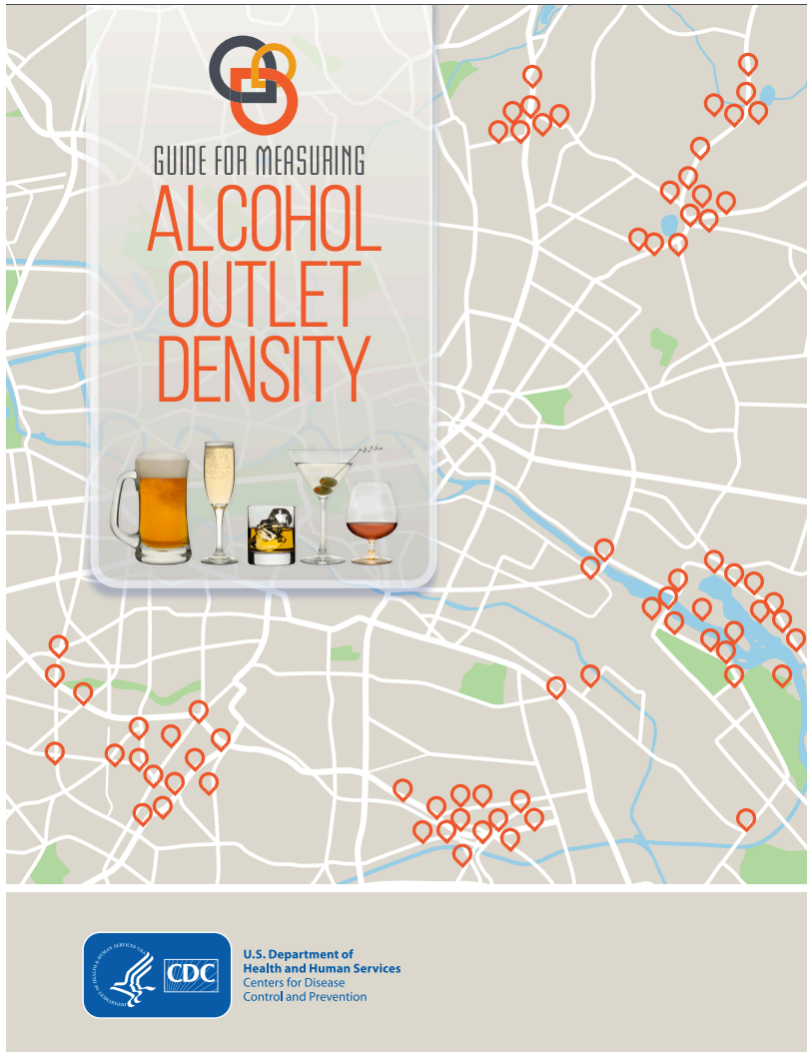
Source: California Department of Alcoholic Beverage Control, 08/11/11

City and County of San Francisco
Department of Public Health
Environmental Health Section

Available at www.thehdm.org



Guide for Measuring Alcohol Outlet Density



<https://www.cdc.gov/alcohol/pdfs/CDC-Guide-for-Measuring-Alcohol-Outlet-Density.pdf>

Written Profiles

FROM A CYCLE OF VIOLENCE TO A CULTURE OF SAFETY AND EQUITY

Alcohol Justice as violence prevention

Practitioners and Advocates Featured:

Jorge Castillo, MA
ADVOCACY DIRECTOR
Alcohol Justice

PreventConnect
A NATIONAL PROJECT OF CALLE 88

PREVENTION
INSTITUTE

Founded in 1987, Alcohol Justice is an advocacy agency that organizes with community groups to pass laws that regulate the production, distribution, and sales of alcohol in order to keep communities healthy and safe. Instead of focusing on individual behaviors associated with alcohol, Alcohol Justice promotes evidence-informed public health policies and organizes campaigns with diverse communities against the alcohol industry's harmful practices. The agency views its work as part of the social justice movement, given the fact that working class communities and communities of color are disproportionately impacted by negative health effects and violence related to alcohol.

THE CONNECTIONS BETWEEN ALCOHOL, HEALTH AND SAFETY

Alcohol Justice promotes evidence-informed public health approaches to alcohol prevention and regulation because it sees the negative effects of alcohol as having a community-wide impact. In 2008, Alcohol Justice published a study looking into the cost and harms associated with alcohol in California, focusing within the four domains of illness, injury, crime, and traffic. The results of the study revealed that the state of California, including local governments, spends \$38 billion per year managing alcohol related harms. Nationwide, the number rises to \$249 billion. The study also revealed that in California, alcohol is a contributing factor in 20% of assaults, rapes, and homicides. These statistics help frame and make the case that alcohol has a negative impact on public health.



Alcohol Justice is an advocacy agency that organizes with community groups to pass laws that regulate the production, distribution, and sales of alcohol in order to keep communities healthy and safe.
Photo provided by Alcohol Justice.

http://www.preventconnect.org/wp-content/uploads/2018/04/2018_PC_ConferenceSummaries_6-FINAL.pdf

FROM A CYCLE OF VIOLENCE TO A CULTURE OF SAFETY AND EQUITY

Changing alcohol environments to prevent sexual and domestic violence

Practitioners and Advocates Featured:

Elise Lopez, DrPH, MPH
ASSISTANT DIRECTOR
Relationship Violence Program,
Mel & Enid Zuckerman College of Public Health,
University of Arizona

PreventConnect
A NATIONAL PROJECT OF CALLE 88

PREVENTION
INSTITUTE

Elise Lopez, Assistant Director of the Relationship Violence Program at the Mel & Enid Zuckerman College of Public Health at the University of Arizona, focuses her research on environmental- and policy-level prevention of sexual assault. Working with the [Arizona Safer Bars Alliance](#), one of her areas of expertise relates to reducing sexual aggression in bar settings across Arizona by bridging the links between alcohol and sexual and domestic violence.

EXPLORING THE CONNECTION BETWEEN ALCOHOL ENVIRONMENTS AND VIOLENCE

Elise has found strong connections between bar environments and violence. Her research has shown that where there are many bars located in the same area, there tend to be hotspots of police reports related to sexual and other types of violence. In addition, she has found that some bar environments might condone certain behavior associated with sexual violence as "acceptable" or "normal."

Elise upholds what we know about sexual aggression and bar environments – namely that alcohol itself is not a cause of violence, but understands from research that alcohol use is associated with greater risk of perpetration and victimization. While no one knows how many rapes actually occur, data, which typically underrepresents the issue, show that [alcohol-related sexual assault is a common occurrence](#). In addition to these statistics, bars are often highly sexualized environments, and there tend to be many bars clustered around college campuses where they attract college students, a population at a higher risk of sexual violence.

USING MAPPING TO FOCUS PREVENTION EFFORTS

In Elise's research, she uses geographic information system (GIS) mapping to determine where reported rapes and other types of violent incidents are occurring in Arizona, and compares that with where there are issued liquor licenses. The data come from a variety of sources, including

http://www.preventconnect.org/wp-content/uploads/2018/07/2018_PC_ConferenceSummaries_7.pdf

Past Web Conferences

The screenshot shows a web conference interface. At the top left is the CALCASA logo. The main title is "The role of alcohol policies to prevent intimate part...". To the right are "Watch later" and "Share" buttons. The slide content is as follows:

Alcohol Outlet Density

- State and local policies regulating the number of alcohol outlets within a region or population

On-Premise Outlets



Off-Premise Outlets



- Types of policies that affect outlet density:
 - Privatization
 - Dry Counties
 - Licensing
 - Zoning

The PreventConnect logo is in the bottom right corner of the slide.

The cover features a close-up of a martini glass with a green olive. The text is as follows:

KEY FINDINGS

FROM "EXPLORING ALCOHOL POLICY APPROACHES TO PREVENT SEXUAL VIOLENCE PERPETRATION"

The NSVRC logo is in the bottom left corner.

<http://www.preventconnect.org/2015/03/the-role-of-alcohol-policies-to-prevent-intimate-partner-violence-and-sexual-violence-perpetration/>

https://www.nsvrc.org/sites/default/files/2015-03/key-findings_exploring-alcohol-policy-approaches-prevent-sexual-violence.pdf

National Sexual Assault Conference 2015



<http://www.preventconnect.org/2016/01/developing-bystander-training-for-bars-around-college-campuses-lessons-learned-from-arizona-safer-bars-alliance/>



THE UNIVERSITY OF ARIZONA

Mel & Enid Zuckerman
College of Public Health

Directory

[Home](#) [About](#) [Undergraduate](#) [Graduate](#) [Research](#) [Faculty](#) [Outreach](#)

UA Health Sciences Leads \$3M NIH Study to Evaluate Sexual Assault Prevention Program in Arizona Bars

Tuesday, September 24, 2019 - 08:16



Mary Koss, PhD

College campuses across the United States conduct sexual assault orientation sessions and prevention workshops for students, yet little research exists as to whether these interventions result in fewer sexual assaults.

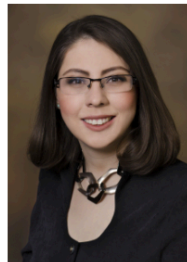
In response, researchers from the University of Arizona Mel and Enid Zuckerman College of Public Health and Arizona State University have been awarded a \$3 million grant from the National Institutes of Health to evaluate the effectiveness of a sexual assault prevention training program for employees who work in alcohol-serving establishments near Arizona's three public universities.

The Arizona Department of Health Services developed and began implementing the "[Safer Bars](#)" program, a bystander-prevention curriculum, in 2012. Funded by the U.S. Centers for Disease Control and Prevention, the program is designed to teach

bartenders and staff to recognize situations that may contribute to sexual violence and ways to safely intervene.

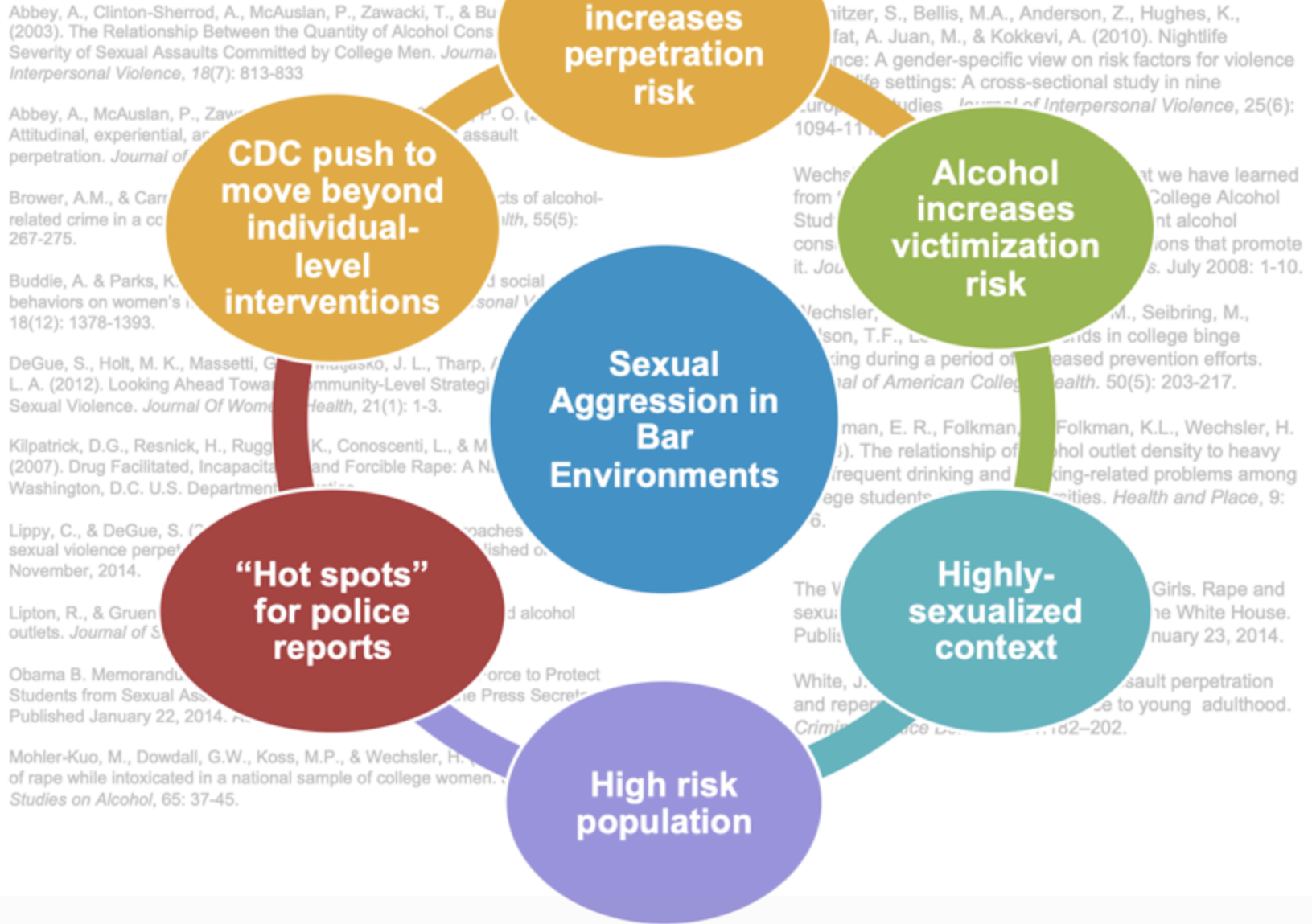
To date, no other research programs have evaluated the effectiveness of the bystander intervention training program as a means to reduce alcohol-related sexual violence.

"A high proportion of rapes of college students occur in environments where liquor is being consumed. People know they should intervene, but don't know what the warning signs are and how to step in," said **Mary Koss, PhD**, a UA Regents Professor of Public Health and a nationally recognized expert on sexual assault. "Our project is designed to equip and empower liquor servers to spot and respond to situations that could escalate into unwanted sexual acts."



Elise Lopez, DrPH

"We are following the CDC's recommendations that more attention be placed on changing the environments and less focus on individuals, because this approach has not been a resounding success over more than 30 years of rape-prevention efforts." Dr. Mary Koss



Bars, Heavy Drinking, and Sexual Aggression

- ▶ *Examining the Roles of Heavy Episodic Drinking, Drinking Venues, and Sociosexuality in College Men's Sexual Aggression*
- ▶ Prevention must consider place and context to be effective



<http://www.preventconnect.org/2019/04/bars-parties-and-sexual-aggression-implications-for-prevention/>

Place

- Typically poorly lit, dense, and have easy access to alcohol

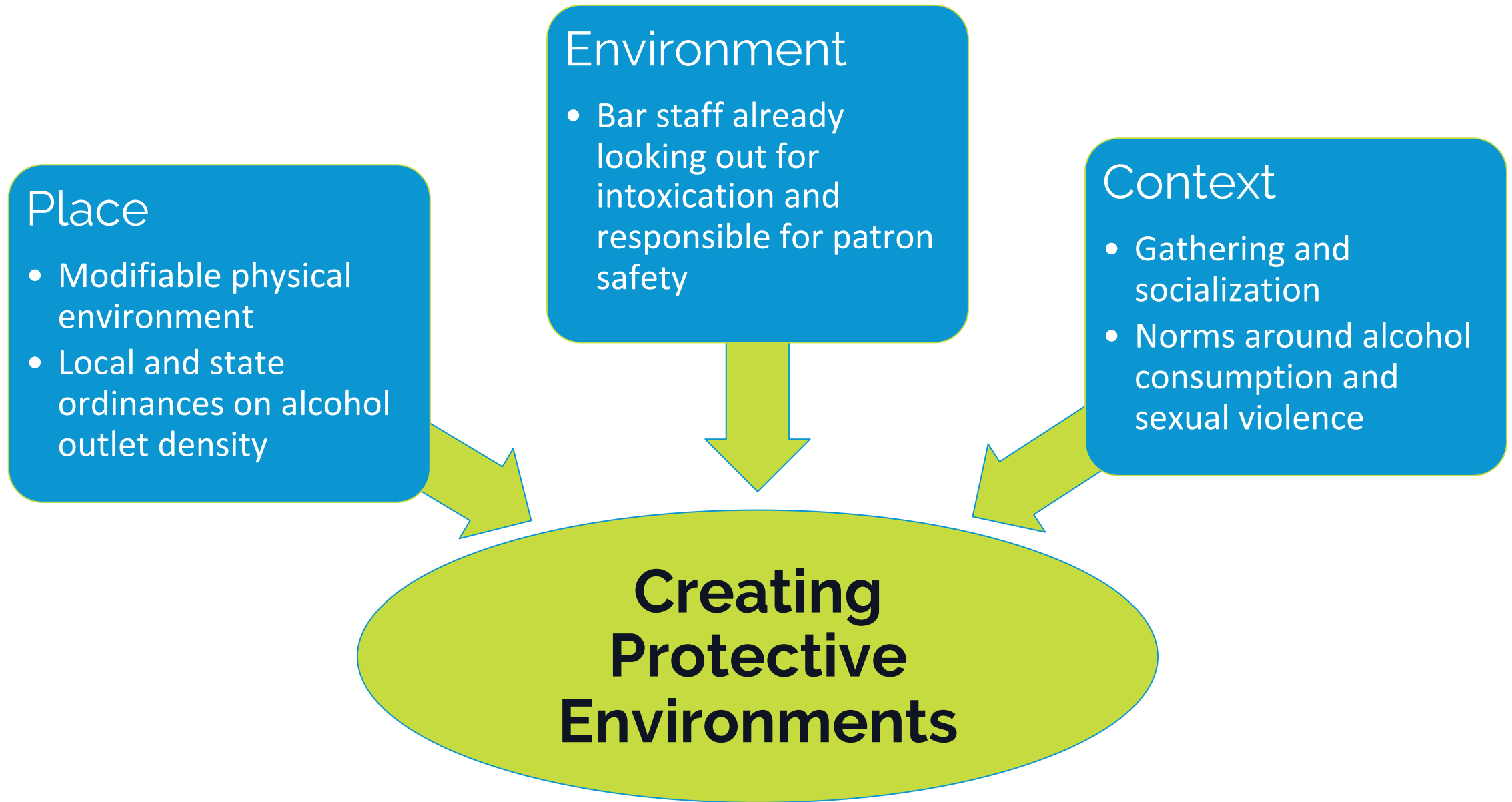
Environment

- Crowded, lots of movement, lowered inhibitions and awareness of others

Context

- Highly sexualized, encourages heavy alcohol consumption

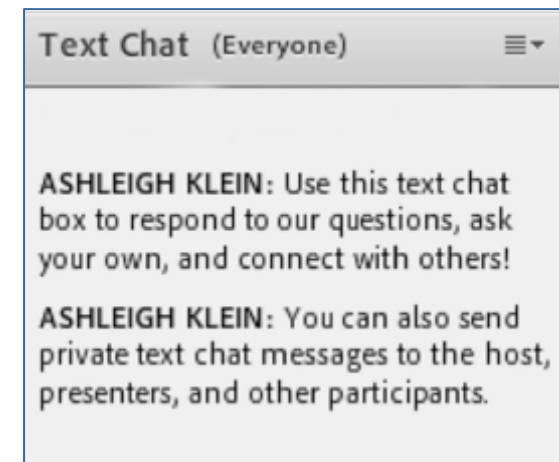
Increased
Risk for
Violence



What environments
are you working to
impact through your
prevention efforts?

Text Chat Question

Use the Text Chat feature to
answer the question.



Meet Our Guests



Brittany Bray

Prevention & Education Manager,
WEAVE
she/her/hers



Shelby Vice

Campus Violence Prevention Specialist,
WEAVE
she/her/hers

Bars, clubs look to combat sexual violence in Sacramento

235 Shares



Updated: 7:23 PM PDT Jul 8, 2019



Tish Palamidessi



<https://www.kcra.com/article/bars-clubs-look-to-combat-sexual-violence-in-sacramento/28328288#>

HELP US KEEP SACRAMENTO SAFE
FROM SEXUAL VIOLENCE



SAFE NIGHT OUT

 **WEAVE**TM

Sacramento, California



SAFE NIGHT OUT

THIS BAR DOES NOT TOLERATE SEXUAL VIOLENCE

#SAFENIGHTOUT

 @WEAVEINC  @WEAVEINC  @WEAVEINC

24/7: 916.920.2952 WWW.WEAVEINC.ORG

 WEAVE™

SAFE NIGHT OUT is one of WEAVE's prevention programs that aims to train nightlife staff on how to recognize **warning signs of sexual and domestic violence**, and how to respond in order to keep establishments safe.


 WEAVE™

What can you do?

Tips for bar/night club staff to intervene.

 WEAVE™

Successes & Challenges

 WEAVE™

Partnerships

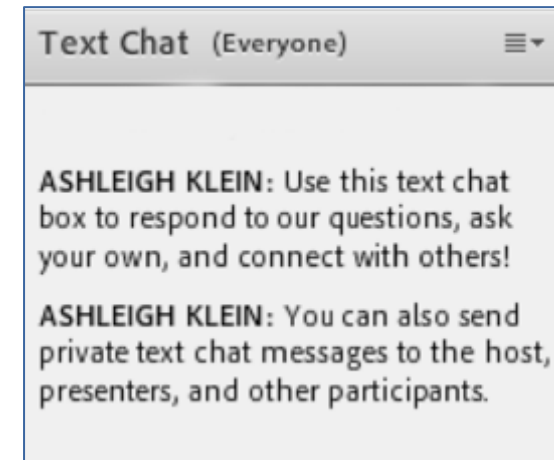
City of
SACRAMENTO

PCCB
pubs
.clubs
.bars

What are your ideas for
engaging city, county,
and other local
partners to help create
protective
environments?

Text Chat Question

Use the Text Chat feature to
answer the question.



SNO SWAG

SAFE NIGHT OUT

THIS BAR DOES NOT TOLERATE SEXUAL VIOLENCE

#SAFENIGHTOUT

 @WEAVEINC  @WEAVEINC  @WEAVEINC

24/7: 916.920.2952 WWW.WEAVEINC.ORG

 WEAVE™

NOCHE SEGURA

ESTA CANTINA NO TOLERA VIOLENCIA SEXUAL

#NOCHESGURA

 @WEAVEINC  @WEAVEINC  @WEAVEINC

24/7: 916.920.2952 WWW.WEAVEINC.ORG

 WEAVE™

 WEAVE™



**LET YOUR
BARTENDER
KNOW IF YOU
ARE FEELING
UNSAFE.**

#safenightout

**THIS BAR DOES NOT TOLERATE
SEXUAL VIOLENCE.**

ONE OR MORE STAFF MEMBERS HAVE BEEN
TRAINED TO RESPOND TO SEXUAL HARASSMENT.

WEAVE 24/7 Support & Information Line
916-920-2952
weaveinc.org



**INFORME A SU
CANTINERO SI SE
SIENTE
INSEGURO.**

#nochesequera

**ESTA CANTINA NO TOLERA
VIOLENCIA SEXUAL.**

UNO O MÁS MIEMBROS DEL PERSONAL SE HAN
ENTRENADO PARA RESPONDER AL ACOSO
SEXUAL.

WEAVE 24/7 Línea de soporte y información
916-920-2952
weaveinc.org



#SAFENIGHTOUT



24/7 916.920.2952

 **WEAVE™**

Online training coming soon
through our WEAVE Learn.

learn@weaveinc.org

 **WEAVE™ learn**
leadership | education | advocacy | resources | networking

WEAVE's mission is to promote safe and healthy relationships, and support survivors of sexual assault, domestic violence, and sex trafficking.

Learn more at weaveinc.org

Brittany Bray, MSW

Prevention & Education Manager

bbray@weaveinc.org

Shelby Vice

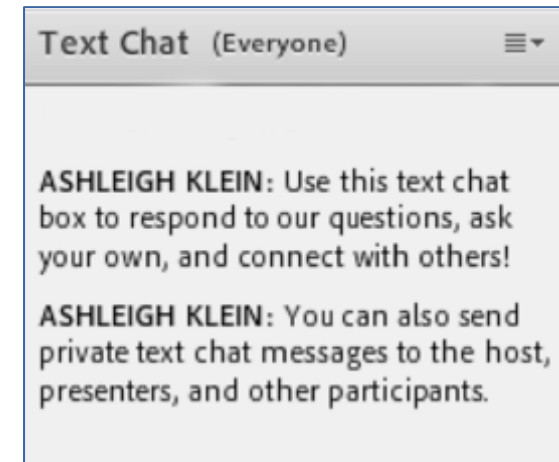
Campus Violence Prevention Specialist

svice@weaveinc.org

What are your ideas
for actions a bar can
take to modify its
environment and
practices?

Text Chat Question

Use the Text Chat feature to
answer the question.



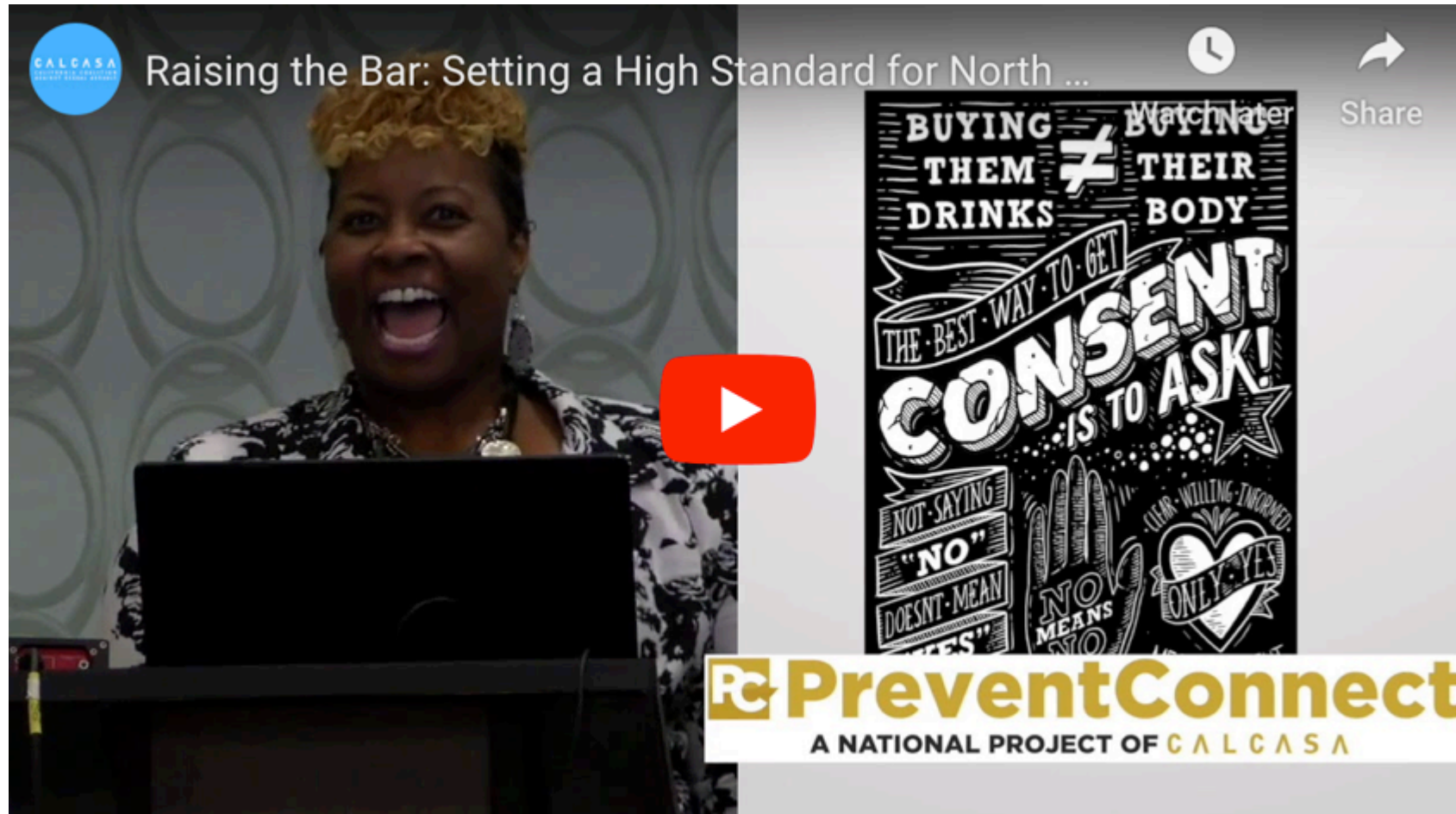
Meet Our Guest



Angelica Wind

Executive Director, Our VOICE
She/her/hers

Ignite Talk: North Carolina



<http://www.preventconnect.org/2018/10/ignite-talk-raising-the-bar-setting-a-high-standard-for-north-carolina-bar-none/>

OUR VOICE

Victims • Outreach • Intervention • Counseling • Education

A Project of Our VOICE

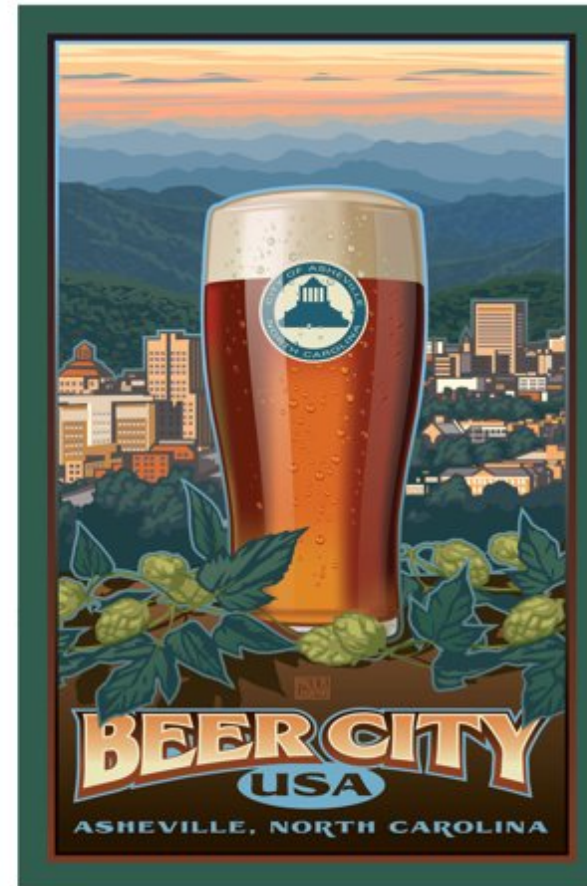
The Bar Outreach Project

A little bit about us..

OUR VOICE

Victims • Outreach • Intervention • Counseling • Education

A little bit about Asheville



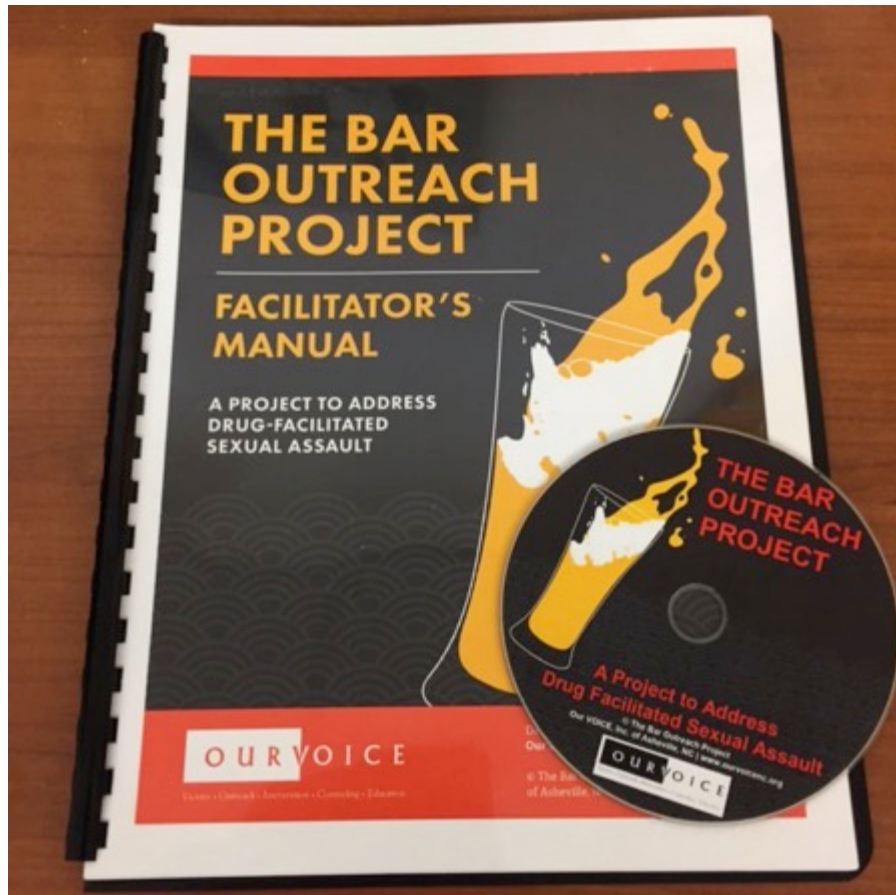
Asheville Brewers Alliance



BREWERY MAP



The Bar Outreach Project



▶ GOALS:

- ▶ Promote an environment of safety in local bars and establishments selling alcohol.
- ▶ Inform bar staff and patrons about DFSA, date rape drugs and local statistics.
- ▶ Create dialogue around alcohol impairment and sexual assault

The Bar Outreach Project

- ▶ GOALS:
 - ▶ Create safe plans in the event someone is drugged or overly intoxicated and therefore more susceptible to sexual assault.
 - ▶ Promote bystander intervention from bar staff.

**IF YOU SEE SOMETHING, SAY SOMETHING.
SILENCE PERPETUATES VIOLENCE.**



Drugging someone's drink is not just sleazy...

IT IS A CRIME

People who are under the influence cannot legally give consent for sex.

GIVE RESPECT.
Asking first shows you care.

GET CONSENT.
It is sexy to talk about what you each want.

EVERY TIME.

OUR VOICE
Voice • Consent • Intervention • Counseling • Education

24 Hour Crisis Line (828) 255-7576 www.ourvoice.org
Our VOICE 44 Merrimon Avenue Asheville, NC 28801 (828) 252-0562
In the pursuit of a community that is free of sexual violence, Our VOICE serves all individuals in Buncombe Co. affected by sexual assault and abuse, through counseling, advocacy and education.

Our VOICE 24 Hour Crisis Line
828.255.7576

Our VOICE 24 Hour Crisis Line
828.255.7576

Our VOICE 24 Hour Crisis Line
828.255.7576

Our VOICE 24 Hour Crisis Line
828.255.7576

Our VOICE 24 Hour Crisis Line
828.255.7576

Our VOICE 24 Hour Crisis Line
828.255.7576

Our VOICE 24 Hour Crisis Line
828.255.7576

Our VOICE 24 Hour Crisis Line
828.255.7576

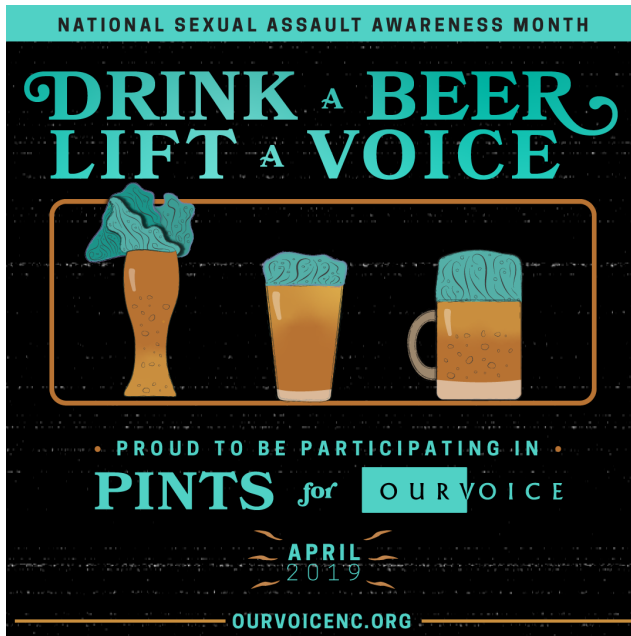
Our VOICE 24 Hour Crisis Line
828.255.7576

Our VOICE 24 Hour Crisis Line
828.255.7576

Our VOICE 24 Hour Crisis Line
828.255.7576

Our VOICE 24 Hour Crisis Line
828.255.7576


Bar Outreach Highlights...



Bar Outreach Project and Pints for Our VOICE

• ASHEVILLE BREWERS ALLIANCE PRESENTS •

Pints for
OUR VOICE



In honor of
SEXUAL ASSAULT AWARENESS MONTH

\$1
per pint of

will go to Our VOICE, Asheville and Buncombe County's rape crisis and prevention center.

Making a donation is easy:
Text "P40V" to 41444 to make a pledge now!

24 Hour Crisis Line (828) 255-7576
Information & Referral Textline Text VOICE or VOZ to 85511

Presented by



Pints for
OUR VOICE



Our VOICE is dedicated to serving all people ages 13 and up who have been impacted by sexual assault or human trafficking through 24-hour crisis services, counseling, case management, court advocacy, prevention and education.

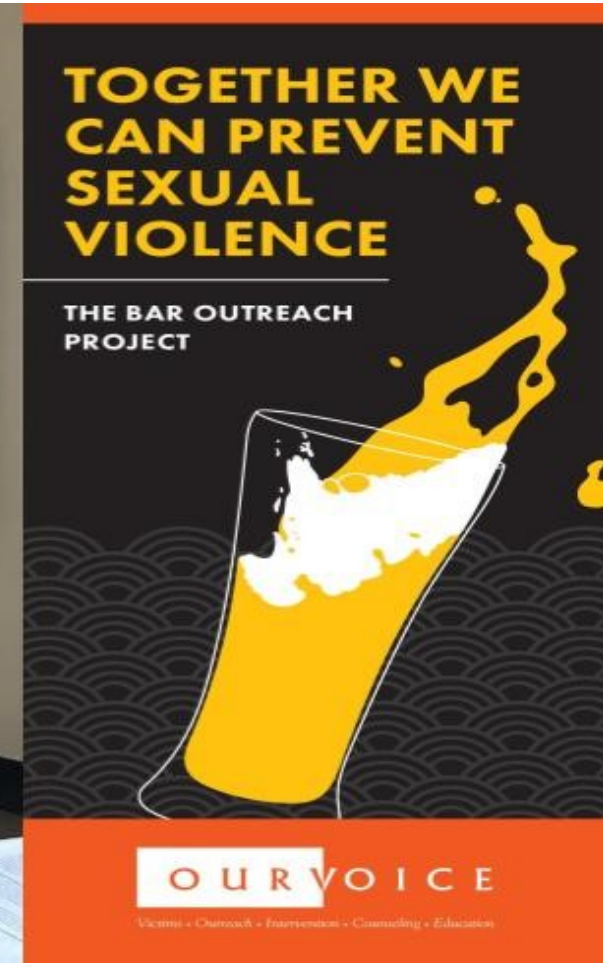
Making a donation is easy:
Text "P40V" to 41444 to make a pledge now!

24 Hour Crisis Line (828) 255-7576
Information & Referral Textline Text VOICE or VOZ to 85511

Bar Outreach Project and Pints for Our VOICE



Further Collaboration to Support OV's Prevention Programming



The Future...

- ▶ Increase its impact across the nation
- ▶ Draft a Spanish version of the curriculum
- ▶ Explore the possibility of the NC Insurance Commission offering a discount insurance rate for Bar Outreach Trained establishments

The Future (cont.)...

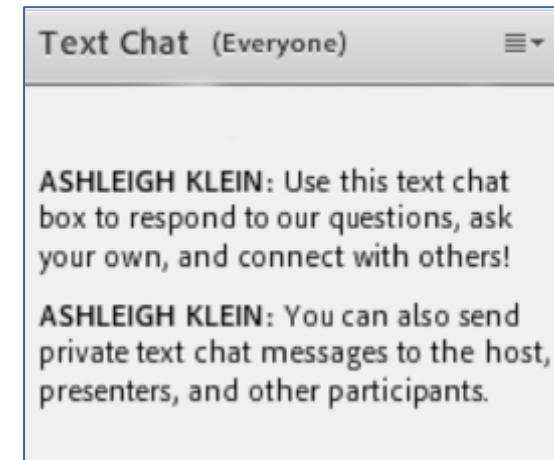
- ▶ Intersect our Bar Outreach Project with our 86-Sexual Harassment training



How can you reframe
your approach with
partners to build a
network to create
protective
environments?

Text Chat Question

Use the Text Chat feature to
answer the question.



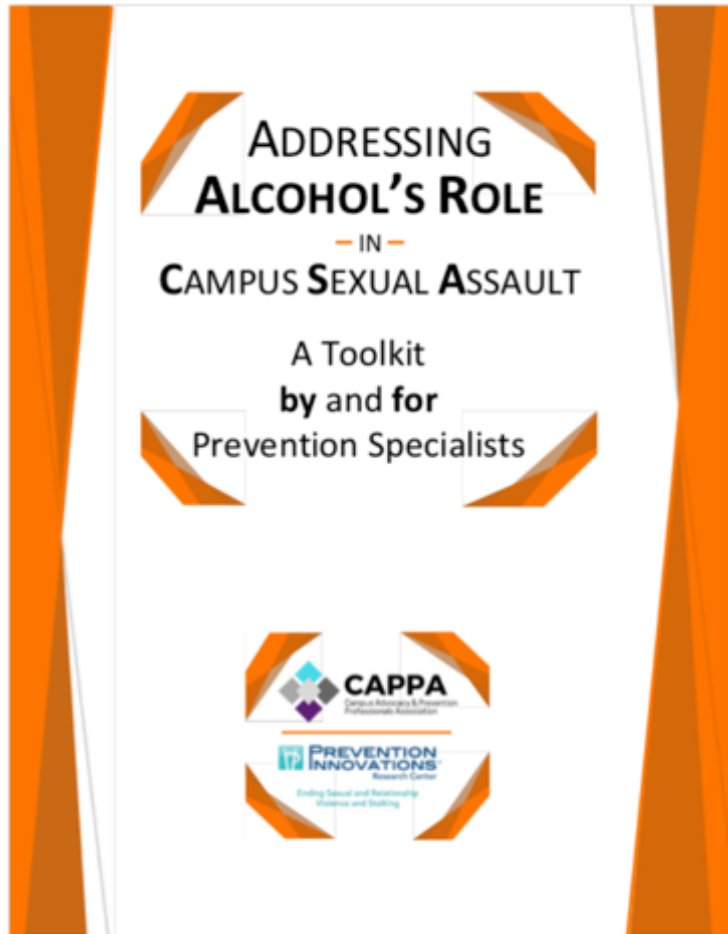
Tips from our guests

CHEERS

To Creating Protective Environments



CAPPA Toolkit



“We’re often so worried about getting [alcohol] wrong that we’re afraid to have these conversations.”

<http://www.preventconnect.org/2018/08/new-resource-from-cappa-addressing-alcohols-role-in-campus-sexual-assault-a-toolkit-by-and-for-prevention-specialists/>

Bystander Intervention in Bars



The **Arizona Safer Bars Alliance (ASBA)** is a statewide initiative of the Arizona Department of Health Services and The University of Arizona. The free five-hour Safer Bars patron safety training teaches bar staff to safely and effectively respond to sexual aggression.

Help make your bar a fun and safe environment for your patrons. Learn more about this initiative and how to become a safer bar.

<https://www.azdhs.gov/prevention/womens-childrens-health/womens-health/az-safer-bars-alliance/index.php>

ASBA bars participate in two sexual assault prevention events every year to show their commitment to community safety.



<http://www.makeyourmovemissoula.org/bar-overview>

Bystander Intervention in Bars



Sponsored by the OASIS Sexual Violence Prevention Task Force

<http://www.preventconnect.org/2018/10/podcast-series-partnering-with-bars-to-prevent-sexual-violence-across-north-carolina/>



<http://safebarcollective.org/home/>



prevent
connect

PreventConnect.org

info@PreventConnect.org

PreventConnect.org/email – email group

Learn.PreventConnect.org – eLearning

Follow Us

twitter.com/PreventConnect

facebook.com/PreventConnect