

Welcome, this web conference will begin soon



Engaging Multisector Partners for Sexual and Intimate Partner Violence Prevention

Thursday, October 17

11 AM PST | 2 PM EST



Meet the PreventConnect Team



Ashleigh Klein-Jimenez

Project Manager
she/her/hers



Tori Vandelinde

Project Coordinator
she/her/hers



prevent
connect

PreventConnect.org

info@PreventConnect.org

PreventConnect.org/email – **email group**

Learn.PreventConnect.org – **eLearning**

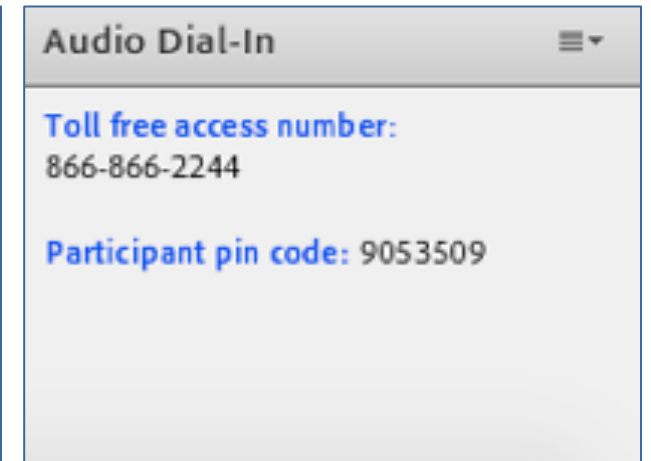
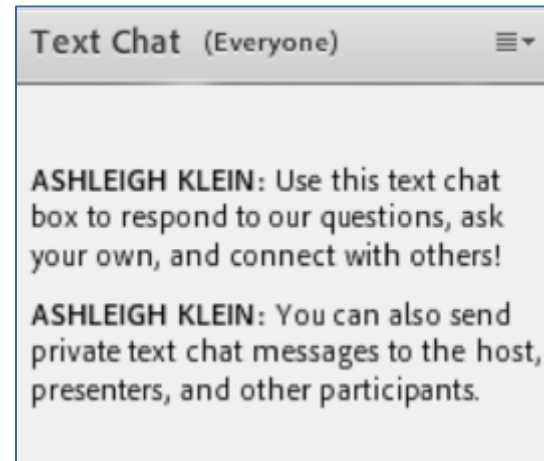
Follow Us

twitter.com/PreventConnect

facebook.com/PreventConnect

How to use Adobe Connect

- ▶ Text chat and private chat
 - ▶ Please send a private chat message for help.
- ▶ PowerPoint Slides
- ▶ Polling Questions
- ▶ Phone
- ▶ Closed Captioning
- ▶ Web Conference Guidelines



Contact Adobe Connect support at:

<https://helpx.adobe.com/adobe-connect/connect-support.html>

PreventConnect

- ▶ Domestic violence/intimate partner violence
- ▶ Sexual violence
- ▶ Violence across the lifespan, including child sexual abuse
- ▶ Prevent before violence starts
- ▶ Connect to other forms of violence and oppression
- ▶ Connect to other prevention practitioners



Engaging Multisector Partners for Sexual and Intimate Partner Violence Prevention

Thursday, October 17

11 AM PST | 2 PM EST



PreventConnect is a national project of the California Coalition Against Sexual Assault sponsored by the U.S. Centers for Disease Control and Prevention. The views and information provided in this web conference do not necessarily represent the official views of the U.S. government, CDC or CALCASA.



Objectives

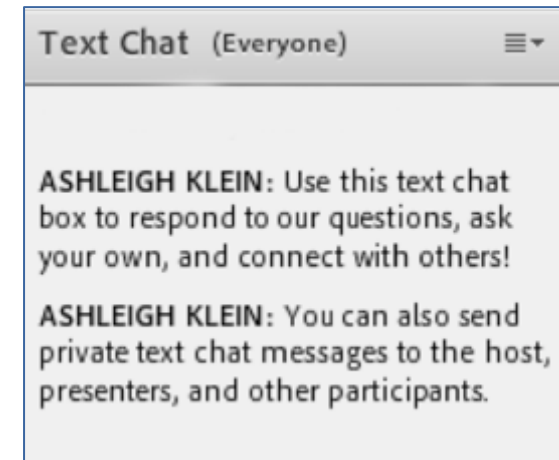
- ▶ Identify opportunities to engage nontraditional partners to advance community-level sexual and intimate partner violence prevention
- ▶ Describe how to use the Collaboration Multiplier
- ▶ Explore who to partner with, how to partner, and towards what ends

*“Violence is not the problem of one neighborhood or group,
and the response and solutions are not the responsibility of one sector
of the community or of one agency, professional group or
business. Coming together and owning this problem
and the solutions are central.”*

—Dr. Deborah Prothrow-Stith
UNITY Co-Chair, Harvard School of Public Health

What do you see as
the benefits of
collaboration?

Use the Text Chat feature to
answer the question.



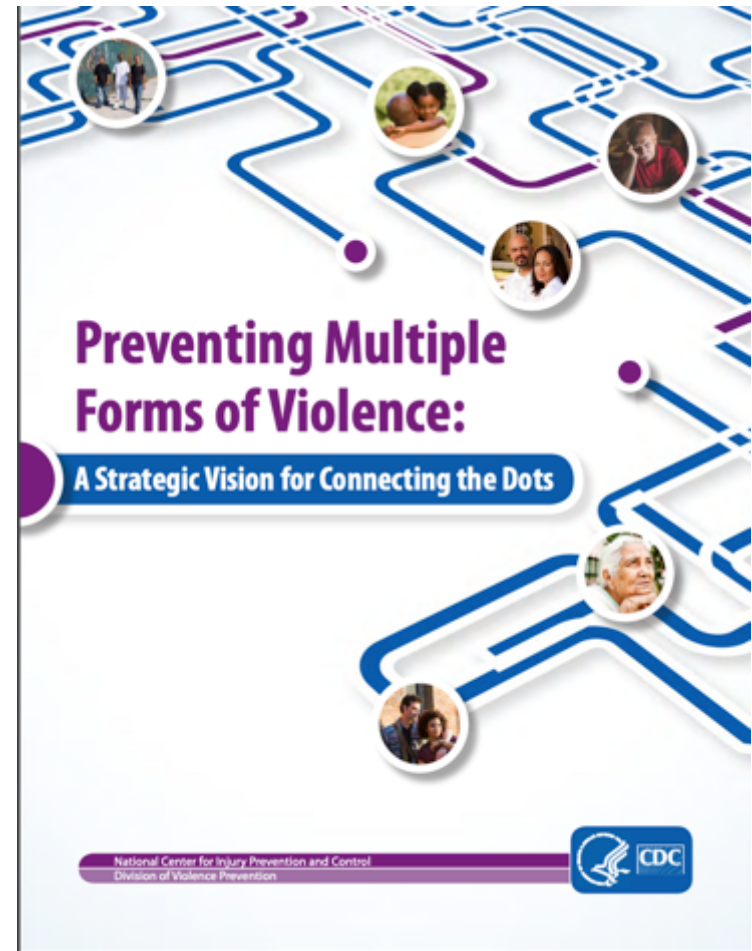
Benefits of Collaboration

- ▶ Define a problem and shape a solution
- ▶ Increase resources
- ▶ Strengthen credibility
- ▶ Broaden influence
- ▶ Broaden reach and impact
- ▶ Promote sustainability



Power of Collaboration

- ▶ Identify shared risk and protective factors
- ▶ Prevent multiple forms of violence



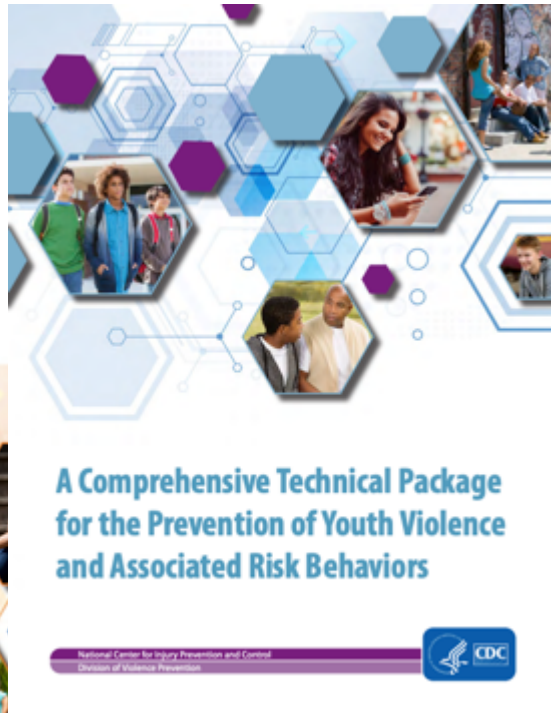
https://www.cdc.gov/violenceprevention/pdf/Strategic_Vision.pdf

CDC Technical Packages



Preventing Suicide:
A Technical Package of Policy,
Programs, and Practices

National Center for Injury Prevention and Control
Division of Violence Prevention



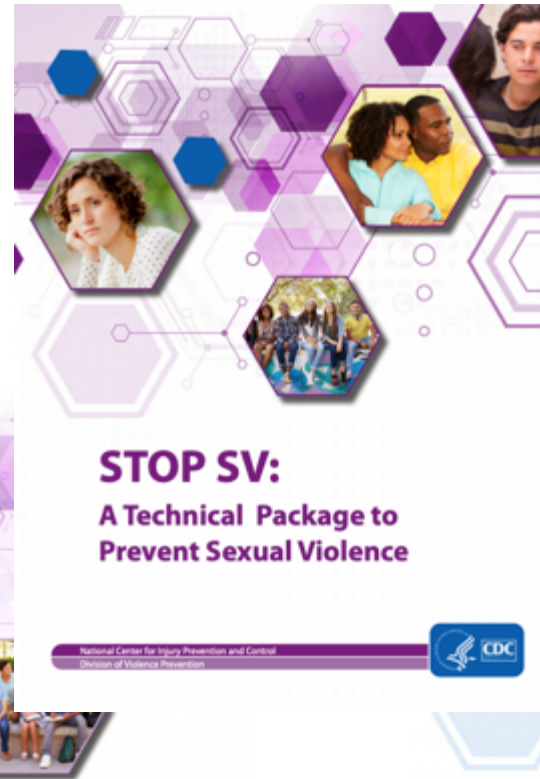
**A Comprehensive Technical Package
for the Prevention of Youth Violence
and Associated Risk Behaviors**

National Center for Injury Prevention and Control
Division of Violence Prevention



**Preventing Intimate Partner
Violence Across the Lifespan:**
A Technical Package of Programs,
Policies, and Practices

National Center for Injury Prevention and Control
Division of Violence Prevention



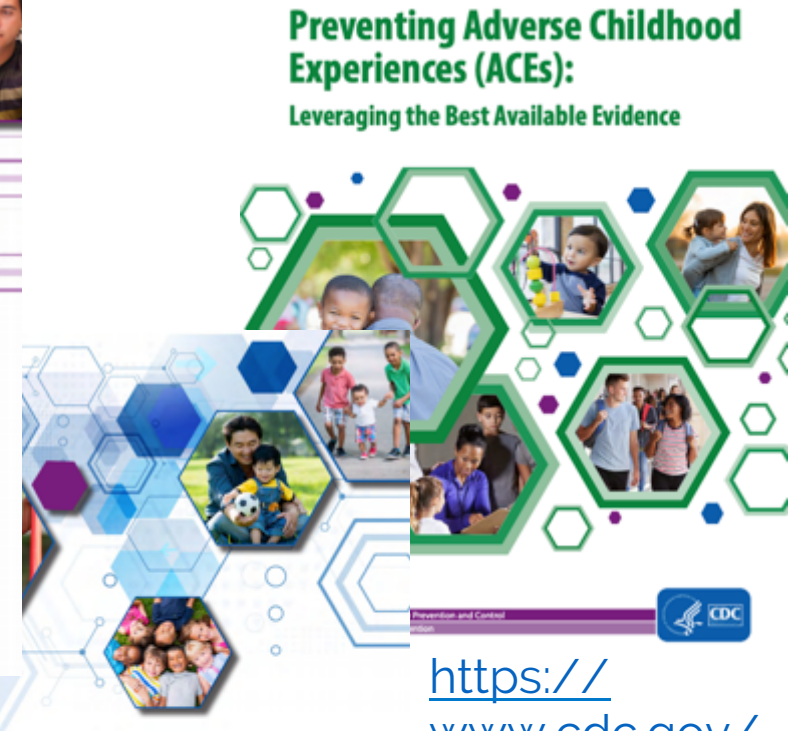
STOP SV:
A Technical Package to
Prevent Sexual Violence

National Center for Injury Prevention and Control
Division of Violence Prevention



**Preventing Child Abuse
and Neglect:**
A Technical Package for Policy, Norm,
and Programmatic Activities

National Center for Injury Prevention and Control
Division of Violence Prevention

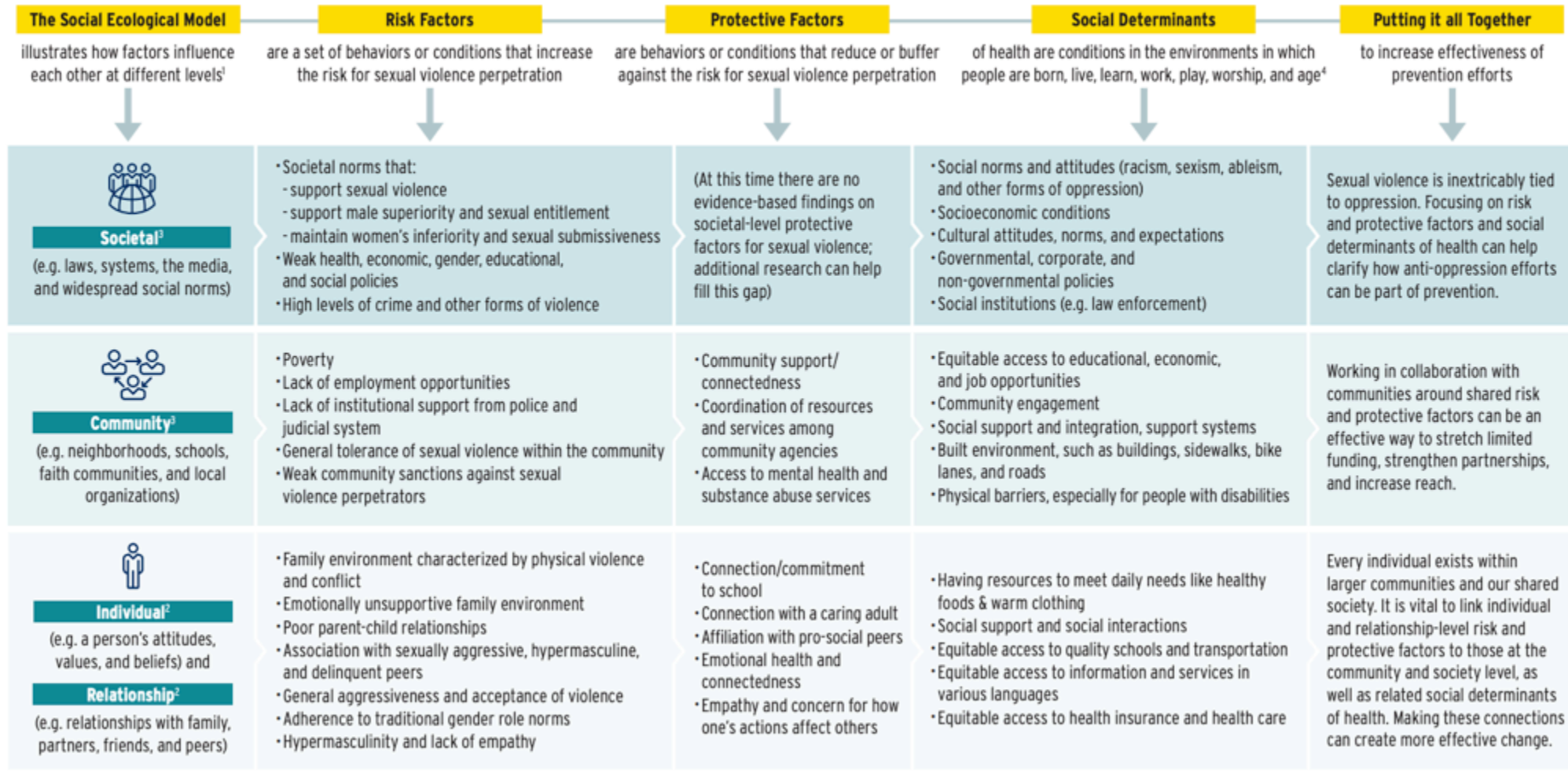


**Preventing Adverse Childhood
Experiences (ACEs):**
Leveraging the Best Available Evidence

[https://
www.cdc.gov/
violenceprevention/pub/
technical-
packages.html](https://www.cdc.gov/violenceprevention/pub/technical-packages.html)

RISK & PROTECTIVE FACTORS

This chart maps out risk and protective factors and social determinants of health along various points in the social ecological model. Understanding these factors and determinants at the societal, community, and individual/relationship levels can increase the effectiveness of sexual violence prevention efforts.



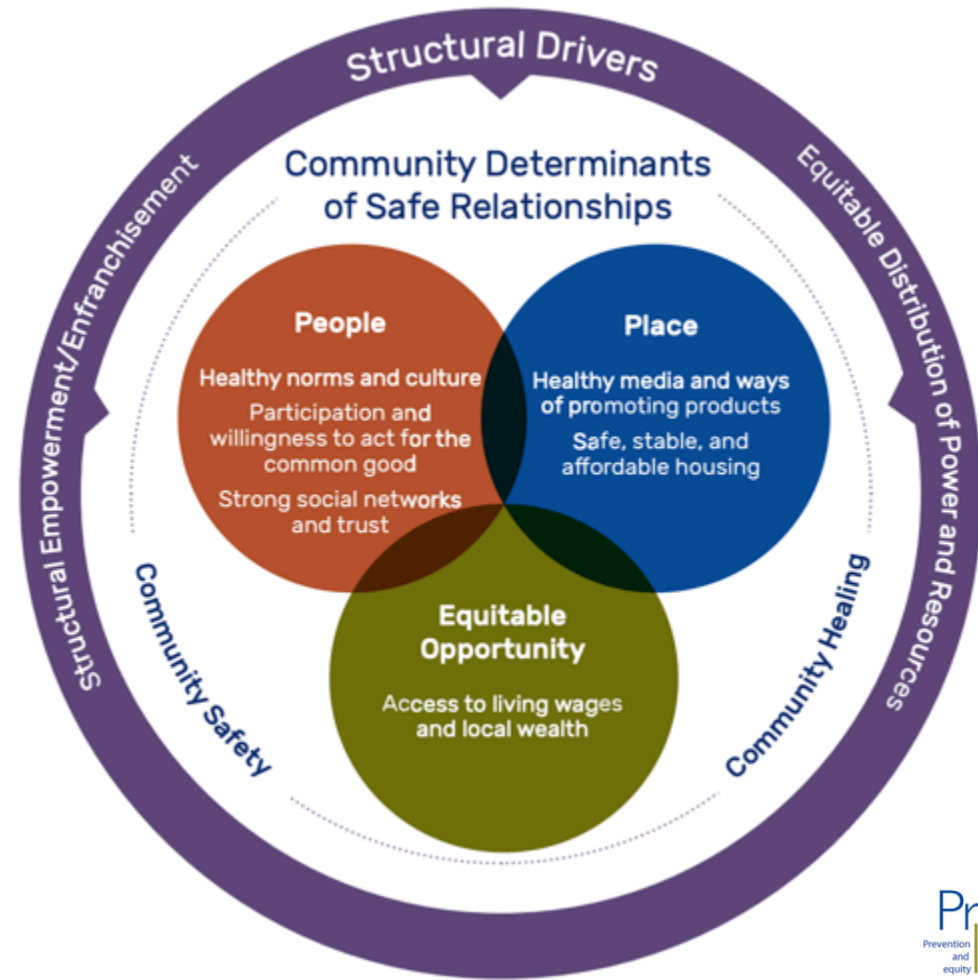
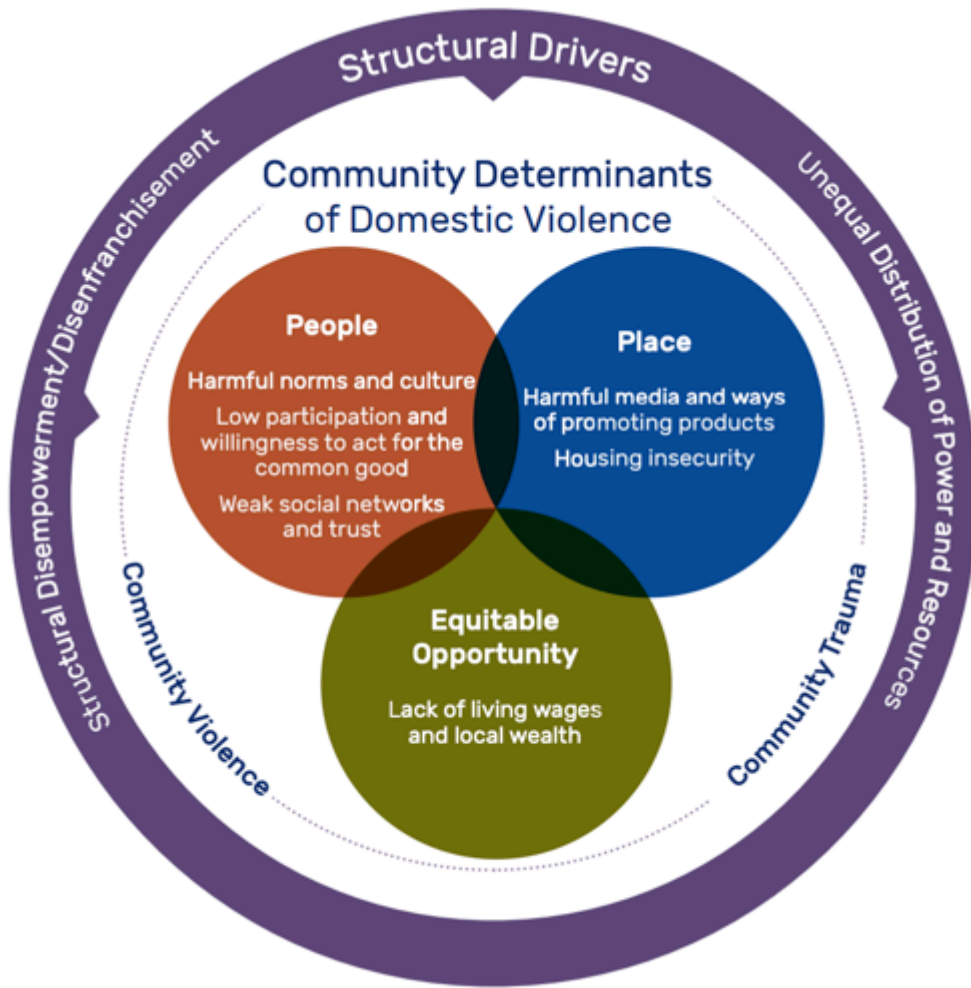
https://www.nsvrc.org/sites/default/files/publications/2019-07/Risk%20%26%20Protective%20factors_Final508.pdf

“There are risk and protective factors common to many public health issues, such as suicide, bullying, and teen dating violence. There are even connections with efforts to increase healthy families and communities, create pay equity and economic justice, and end racism and other forms of oppression. We can work together around shared risk and protective factors to stretch limited funding, create and strengthen partnerships, and increase reach.”

https://www.nsvrc.org/sites/default/files/publications/2019-07/Risk%20%26%20Protective%20factors_Final508.pdf

NSVRC Risk & Protective Factors Infographic, 2019

Multi-Sector Roles in Preventing Violence



Where we live

- ▶ Housing sector
- ▶ Community development
- ▶ Planning sector
- ▶ Zoning sector



Where we work

- ▶ Business sector
- ▶ Workforce development sector



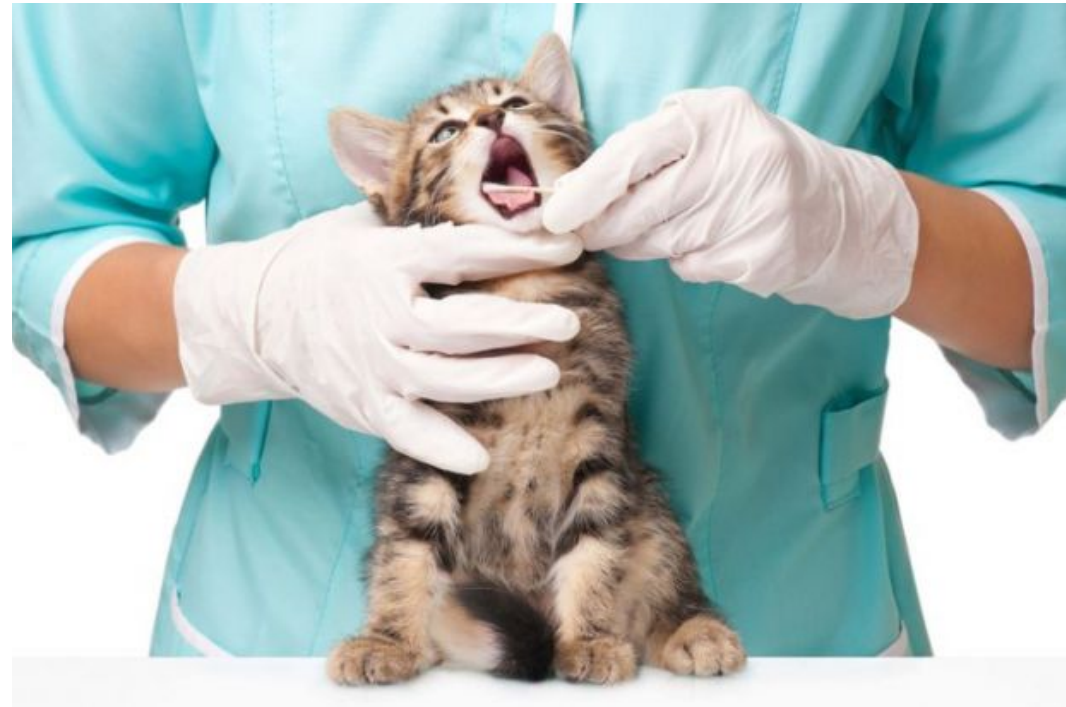
Where we connect and play

- ▶ Sports sector
- ▶ Entertainment sector
- ▶ Faith sector



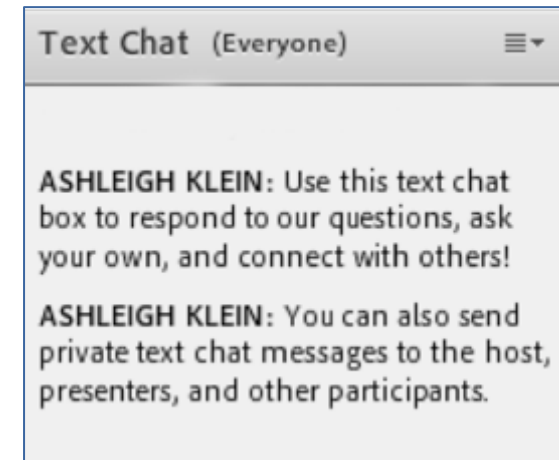
Where we receive care

- ▶ Healthcare sector
- ▶ Social services sector



Who are you currently partnering with to advance your prevention efforts?

Use the Text Chat feature to answer the question.



Meet Our Guests



Sarah Ehrhard Reid

RPE Director, Missouri Department of Health
and Senior Services
she/her/hers



Matthew Huffman

Public Affairs Director, Missouri Coalition
Against Domestic and Sexual Violence
he/him/his

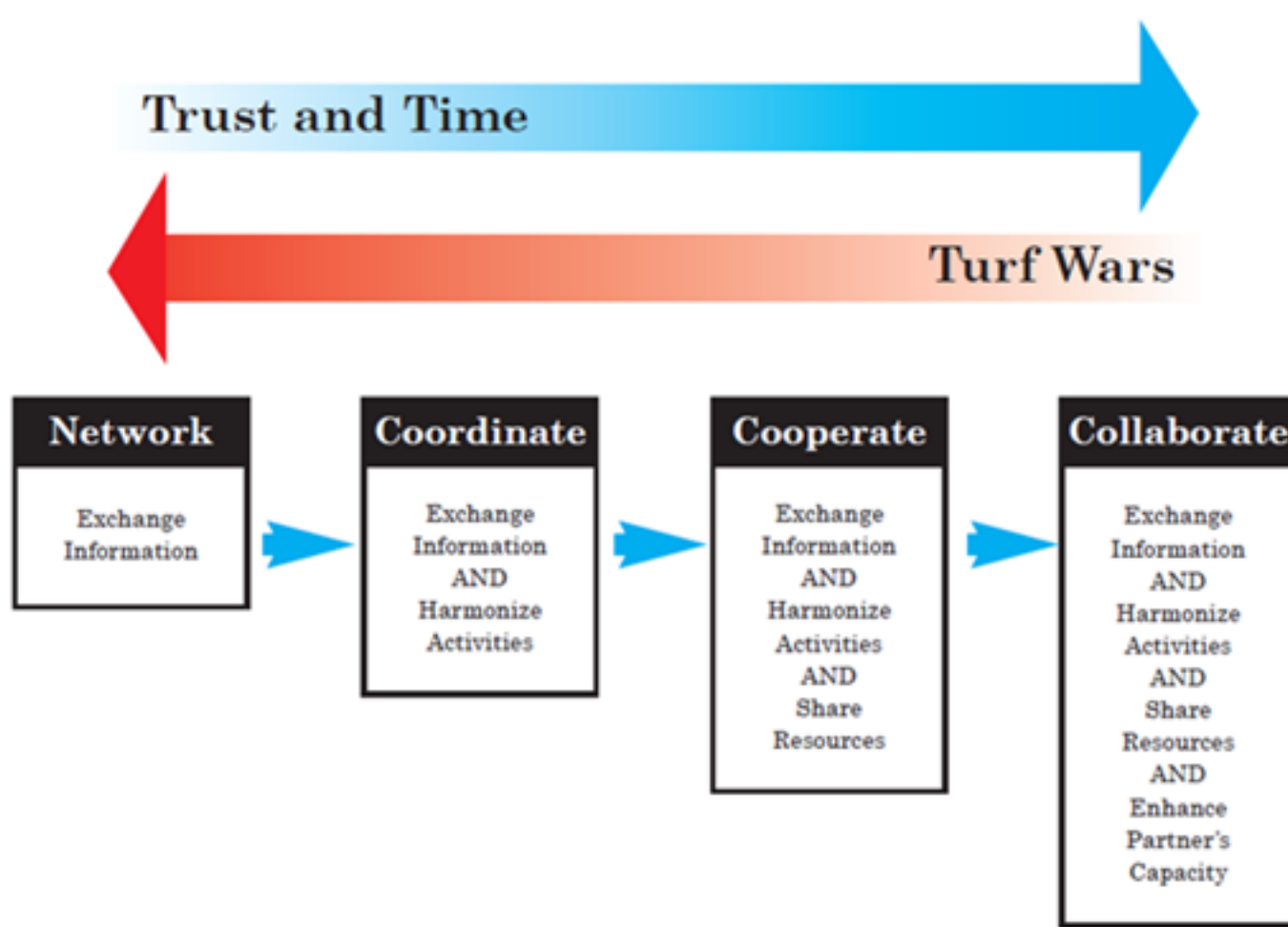
Aligning Your Mission

- ▶ **Missouri Department of Health and Senior Services (MODHSS):** To be the leader in promoting, protecting and partnering for health.
- ▶ **Missouri Coalition Against Domestic and Sexual Violence (MCADSV):** Unites Missourians with the shared value that rape and abuse must end, and advances this through education, alliance, research and public policy.

Language Matters



Partnership [pahrt-ner-ship]: the relation subsisting between partners.



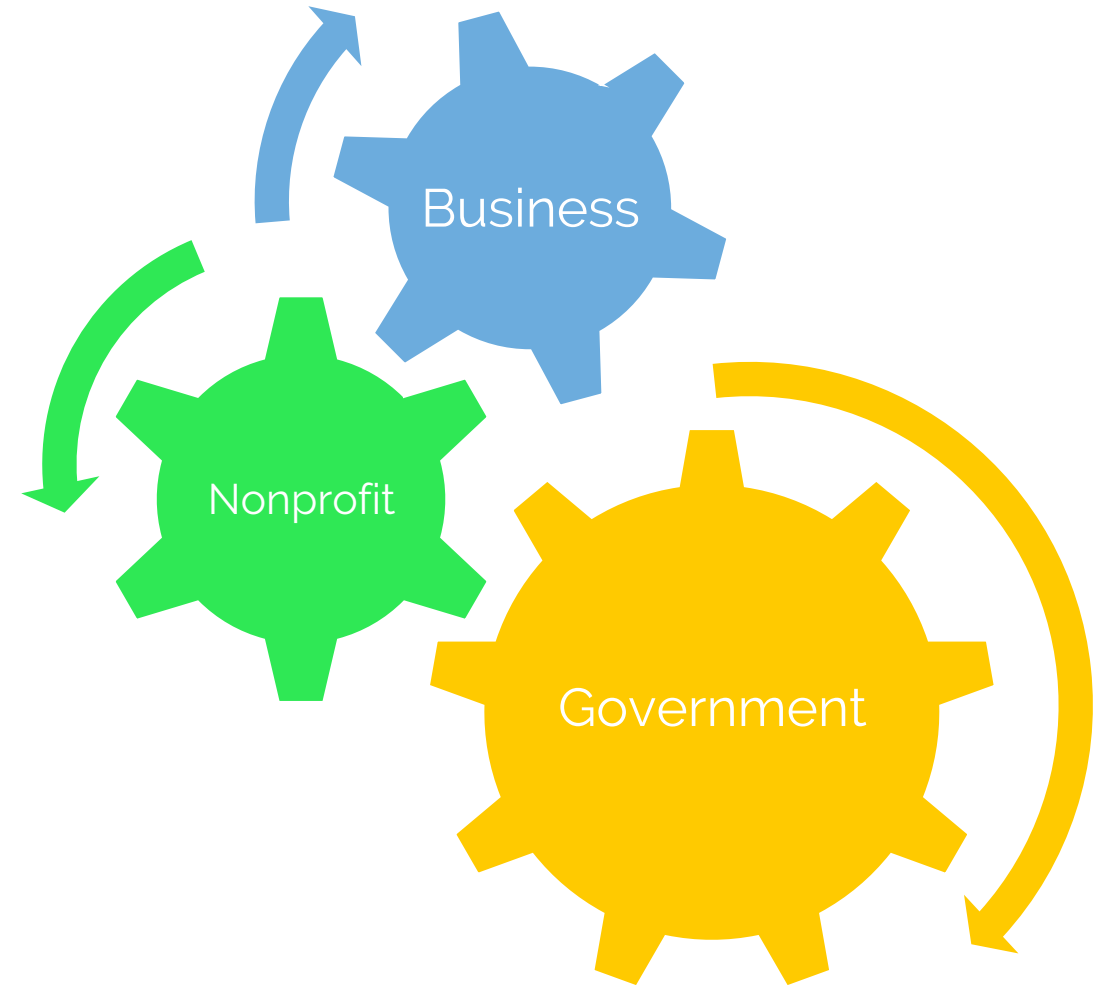
Thanks, Pam Brown

Based on concepts from A.T. Himmelman
"Collaboration for a Change: Definitions, Models,
Roles and a Collaboration Process Guide" and a tool
developed by Lancaster Community Health Plan.

Partnerships and Public Health

- ▶ Partnerships are relationships between public health and others (sectors, organizations, agencies) that are formal and informal in nature where skills and assets are shared to **improve the public's health and each partner shares in the risks and rewards that result from the partnership.**

Thanks again, Pam Brown



Traditional Partnerships

- ▶ Missouri Department of Health and Senior Services
- ▶ Missouri Coalition Against Domestic and Sexual Violence
- ▶ Missouri Partners in Prevention



Non-traditional Case Examples

Missouri Coalition Against Domestic and Sexual Violence and Missouri Chamber of Commerce and Industry

- ▶ Safe House for Women and Cape Girardeau Area Chamber of Commerce



Non-traditional Case Examples

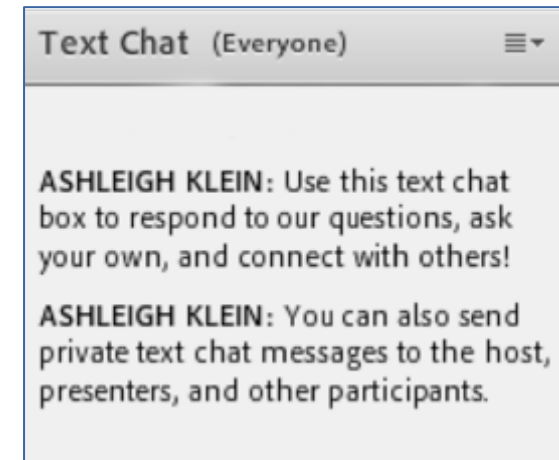
Interdepartmental work at Missouri Department of Health and Senior Services

- ▶ Missouri Livable Streets



What are your ideas for reframing and/or rephrasing prevention work to find shared language and values with other sectors?

Use the Text Chat feature to answer the question.



Meet Our Guest



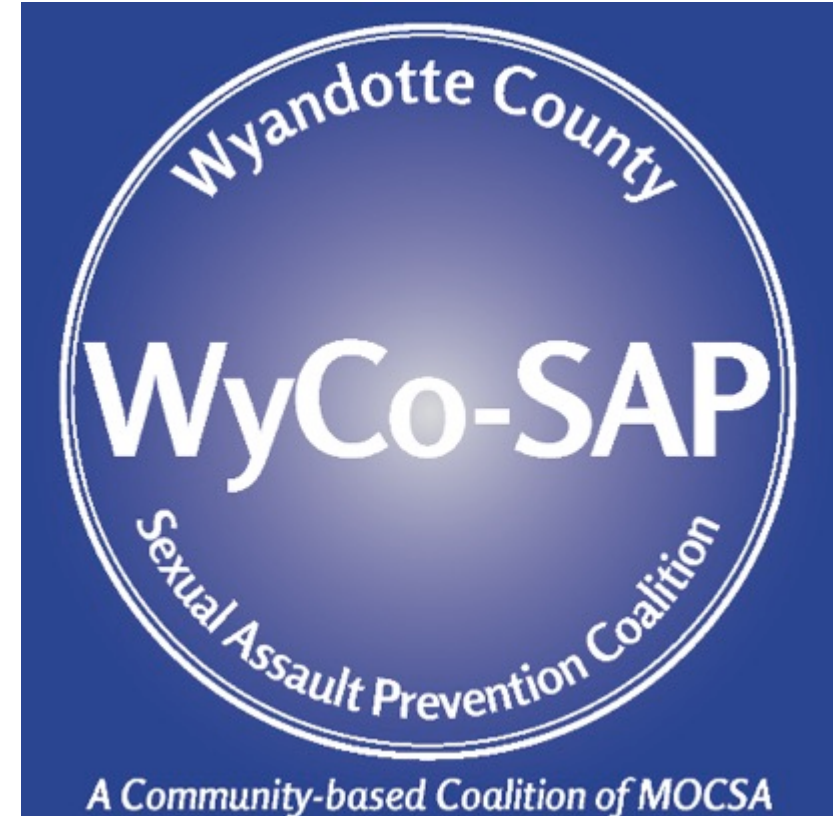
Vanessa Crawford Aragon

Community Prevention Coordinator, MOCSA
(Metropolitan Organization to Counter Sexual
Assault)

she/her/hers

Wyandotte County Sexual Assault Prevention Coalition

- ▶ Existing community advisory committee, switched focus to primary prevention in 2014
- ▶ First community-level sexual violence prevention coalition in Kansas
- ▶ Developed 5-year Violence Prevention Plan that is part of the county health department's Community Health Improvement Plan (CHIP)



Wyandotte County Sexual Assault Prevention Coalition

- ▶ Priorities Identified by Assessments and Community Engagement
 - ▶ Empower community members to take action to combat feelings that violence is inevitable
 - ▶ Address factors in the physical environment and infrastructure that promote safety and crime reduction
 - ▶ Examine public policies for opportunities to impact sexual violence

Wyandotte County Sexual Assault Prevention Coalition

- ▶ Focus Risk and Protective Factors
 - ▶ Foster safer neighborhoods, free from violence
 - ▶ Foster and promote community connectedness and resident supports
 - ▶ Address cultural norms that support or promote violence

Partnerships



HEALTHY COMMUNITIES
WYANDOTTE



NBC Community Development Corporation
Celebrating Life, Strengthening the Community and Fostering Reconciliation



Wyandotte County Sexual Assault Prevention Coalition

▶ Planning Process



The Collaboration Multiplier: Information Gathering

Partner	Importance	Organizational Goals	Expertise	Assets & Strengths	Key Strategies	Desired Outcomes	Partnership	Organizational Benefit

The Collaboration Multiplier: Information Gathering

Partner	Importance	Organizational Goals	Expertise	Assets & Strengths	Key Strategies	Desired Outcomes	Partnership	Organizational Benefit	Concerns

Part II: COLLABORATION MULTIPLIER ANALYSIS

COLLABORATOR 1
Expertise/Resources:
Results/Outcomes:
Key Strategies:
COLLABORATOR 2
Expertise/Resources:
Results/Outcomes:
Key Strategies:
COLLABORATOR 3
Expertise/Resources:
Results/Outcomes:
Key Strategies:

WHAT RESULTS/OUTCOMES CAN BE ACHIEVED TOGETHER?
WHAT PARTNER STRENGTHS CAN THE COLLABORATIVE UTILIZE?
WHAT STRATEGIES/ACTIVITIES CAN 2+ PARTNERS WORK TOGETHER ON? WHO TAKES THE LEAD (L) AND WHO PLAYS A SUPPORTIVE (S) ROLE?

COLLABORATOR 4
Expertise/Resources:
Results/Outcomes:
Key Strategies:
COLLABORATOR 5
Expertise/Resources:
Results/Outcomes:
Key Strategies:
COLLABORATOR 6
Expertise/Resources:
Results/Outcomes:
Key Strategies:

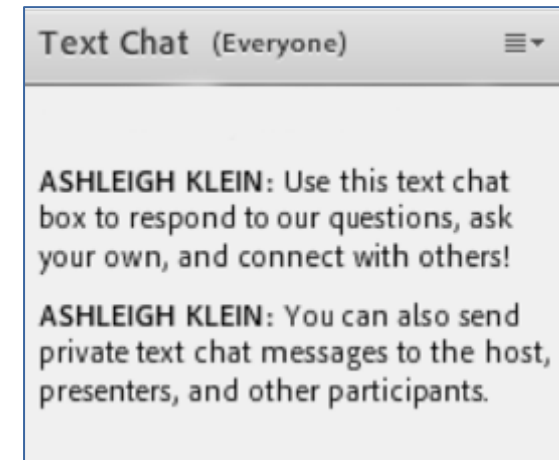
Wyandotte County Sexual Assault Prevention Coalition

▶ Lessons Learned

- ▶ Important to think strategically about which individuals/agencies are part of your planning
- ▶ Don't compete with other community initiatives, add value
- ▶ Clarity about everyone's objectives allows collaboration for shared goals, even when missions differ

What considerations should be taken into account when establishing new partnerships?

Use the Text Chat feature to answer the question.



Clever Collaboration Considerations

“It is the long history of humankind (and animal kind, too) that those who learned to collaborate and improvise most effectively have prevailed.” -- Charles Darwin

- ▶ There is no magic formula for creating strong partnerships
- ▶ Anticipate conflict/manage reactions
- ▶ Little actions add up

*when in doubt, bring food



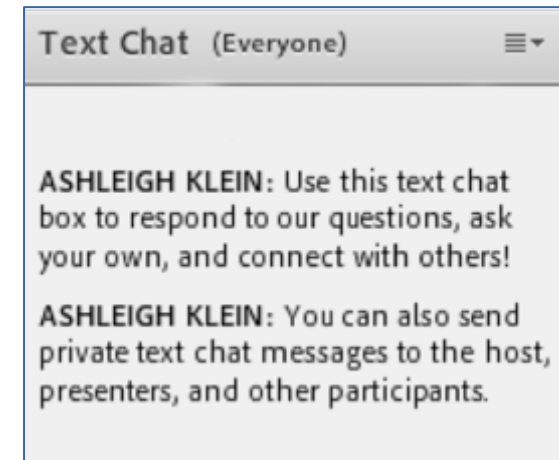
Tips from MOCSA

- ▶ Transparent and accountable planning process, including when plans need to change
- ▶ Reciprocal participation with partners is key



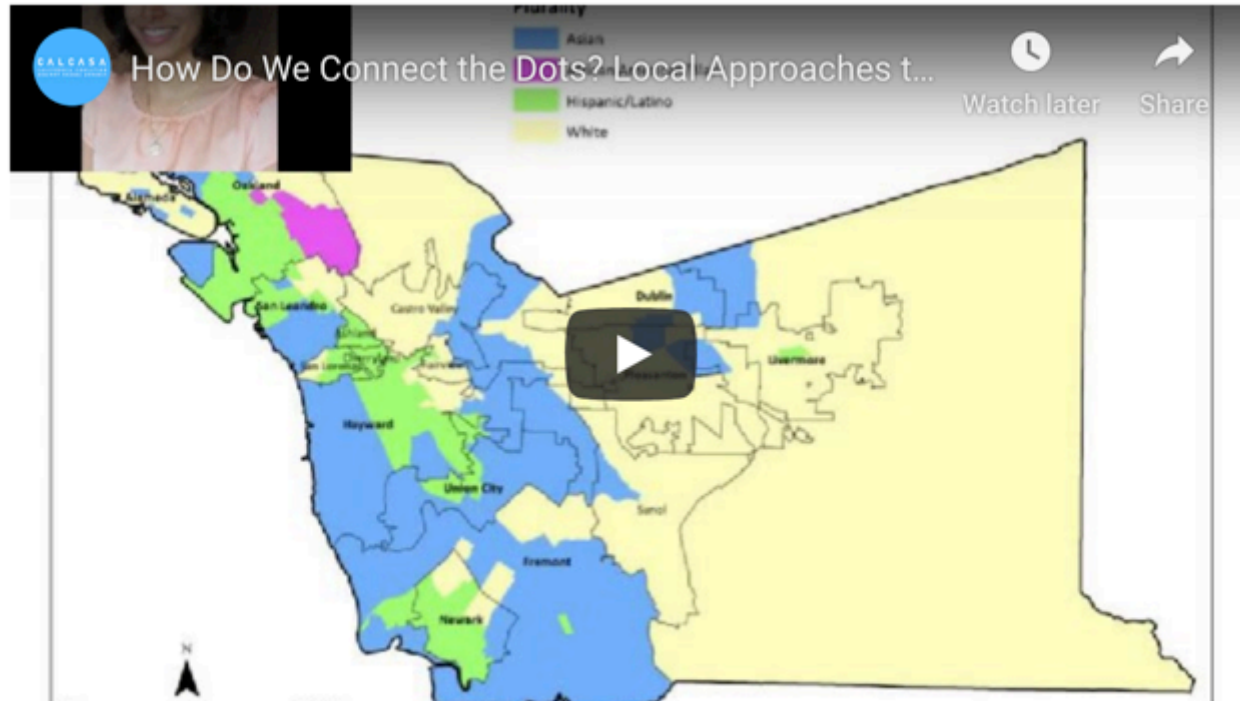
What new partnerships are you considering to advance your work?

Use the Text Chat feature to answer the question.



Tools and Resources

How Do We Connect the Dots? Local approaches to preventing multiple forms of violence



WEDNESDAY, MARCH 15, 2017

<http://www.preventconnect.org/2017/02/how-do-we-connect-the-dots-local-approaches-to-preventing-multiple-forms-of-violence/>

Collaboration Multiplier

COLLABORATION MULTIPLIER

Enhancing the Effectiveness of Multi-Field Collaboration

Collaboration Multiplier is an interactive tool for strengthening collaborative efforts across diverse fields. A multi-field approach has proven vital for tackling today's complex social challenges. Whether the goal is promoting health equity, strengthening local economies, reducing greenhouse gas emissions, or enhancing community safety, improving our well-being requires community-wide changes that include strengthening government policies and the practices of key organizations. Multi-field collaboration expands available resources, strategies, and capabilities to achieve outcomes that could not be accomplished by one field alone.

Collaboration Multiplier provides a systematic approach to laying the groundwork for multi-field collaboration. The tool guides organizations through a collaborative discussion to identify activities that accomplish a common goal, delineate each partner's perspective and potential contributions, and leverage expertise and resources. Collaboration Multiplier is based on the understanding that different groups and sectors have different views of an issue and different reasons for engaging in a joint effort. For example, a collaborative formed to increase access to healthy food in underserved neighborhoods can more effectively engage partners by recognizing that each has their own goals. A grocery store operator might expand fresh food offerings to enhance sales and profits, a health department would support the effort to improve health, and the Mayor might

see enhanced food retail as fundamental for a flourishing community. Collaboration Multiplier helps surface these perspectives and forge strategies that advance their objectives simultaneously.

Collaboration Multiplier can be used in different stages of collaboration. It can be used by a newly formed or established partnership that wants to strengthen its collective effort, or it can be used by an individual or small set of organizations that recognize the value of a diverse partnership and want to think strategically about whom to invite to the table.

The Collaboration Multiplier Process

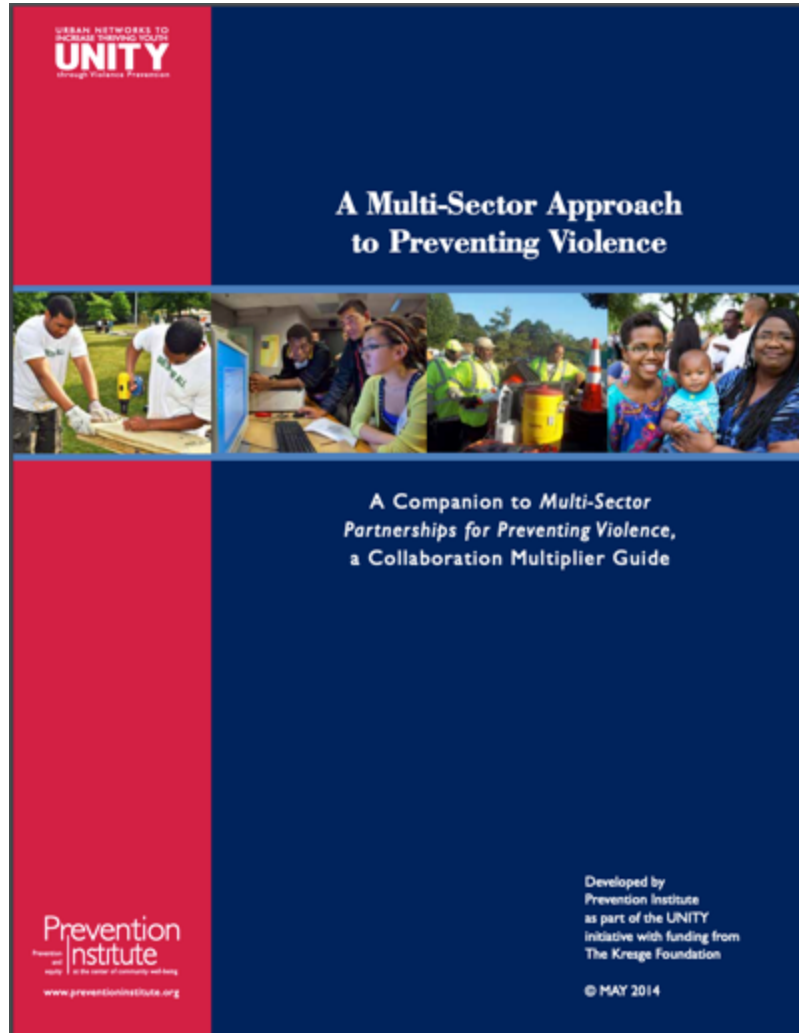
Collaboration Multiplier occurs in two phases: 1) Information Gathering and 2) Collaboration Multiplier Analysis

In the first phase, the key sectors and fields that can contribute to a solution are identified. Then key information from the *perspective of each field* (or prospective field) is collected according to a common set of categories. Specific categories vary based on the particular collaboration, but typical examples include:

- **Importance:** Why is this issue important?
- **Organizational Goals:** What are the goals related to this issue?
- **Audience:** Who is the primary audience/constituency?
- **Expertise:** What unique expertise does this field bring to the collaborative?

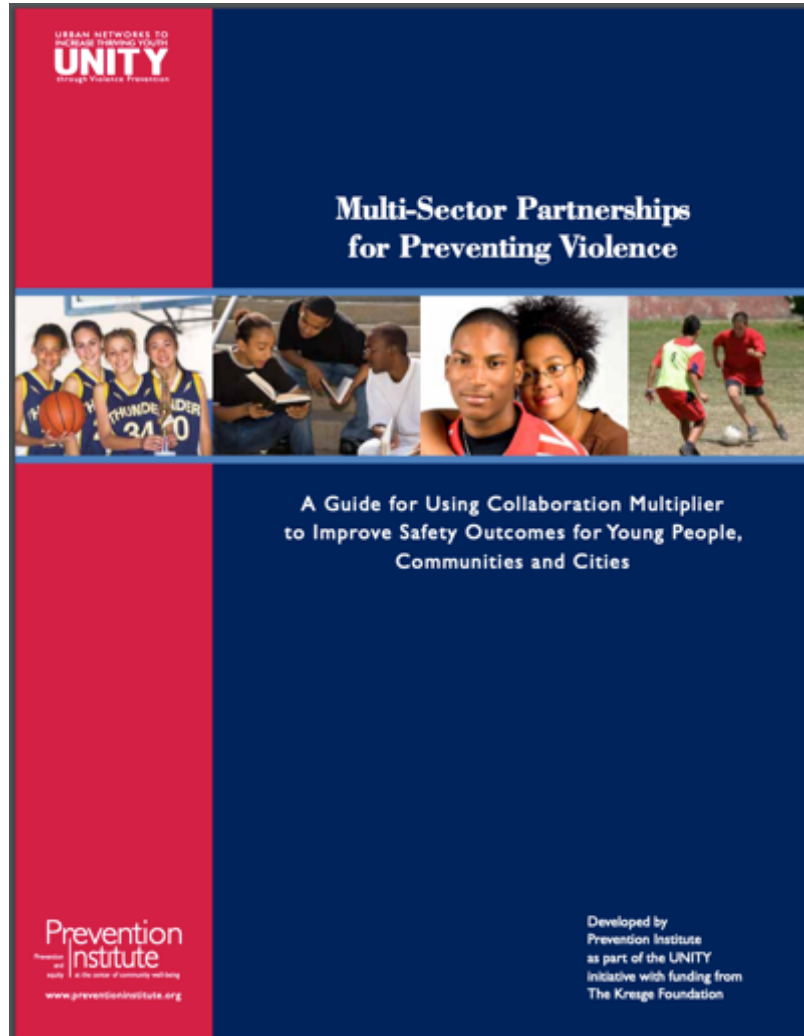
https://www.preventioninstitute.org/sites/default/files/uploads/Collaboration%20Multiplier_0.pdf

A Multi-Sector Approach to Preventing Violence



<https://www.preventioninstitute.org/publications/multi-sector-approach-preventing-violence>

Multi-Sector Partnerships for Preventing Violence



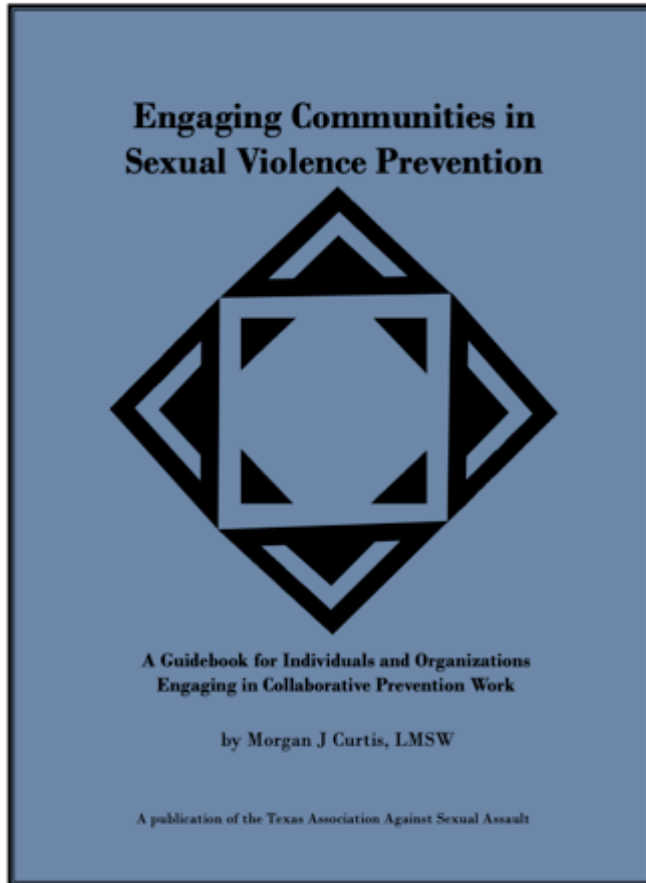
<https://www.preventioninstitute.org/publications/multi-sector-partnerships-for-preventing-violence>

A Health Equity and Multisector Approach to Preventing Domestic Violence



<https://www.preventioninstitute.org/sites/default/files/publications/A%20Health%20Equity%20and%20multisector%20approach%20to%20dv.pdf>

Engaging Communities in Sexual Violence Prevention



<http://taasa.org/wp-content/uploads/2014/10/Engaging-Communities-in-Sexual-Violence-Prevention1.pdf>



prevent
connect

PreventConnect.org

info@PreventConnect.org

PreventConnect.org/email – email group

Learn.PreventConnect.org – eLearning

Follow Us

twitter.com/PreventConnect

facebook.com/PreventConnect