

Welcome, this web conference will begin soon

Let's Connect

Sexual and Intimate Partner Violence
Prevention During a Pandemic

Tuesday, April 7th
12:30pm PT | 3:30pm ET



Meet the PreventConnect Team



Ashleigh Klein-Jimenez

Project Manager
she/her/hers



David Lee

Director of Prevention
he/him/his



Tori VandeLinde

Project Coordinator
she/her/hers



prevent
connect

PreventConnect.org

info@PreventConnect.org

PreventConnect.org/email – **email group**

Learn.PreventConnect.org – **eLearning**

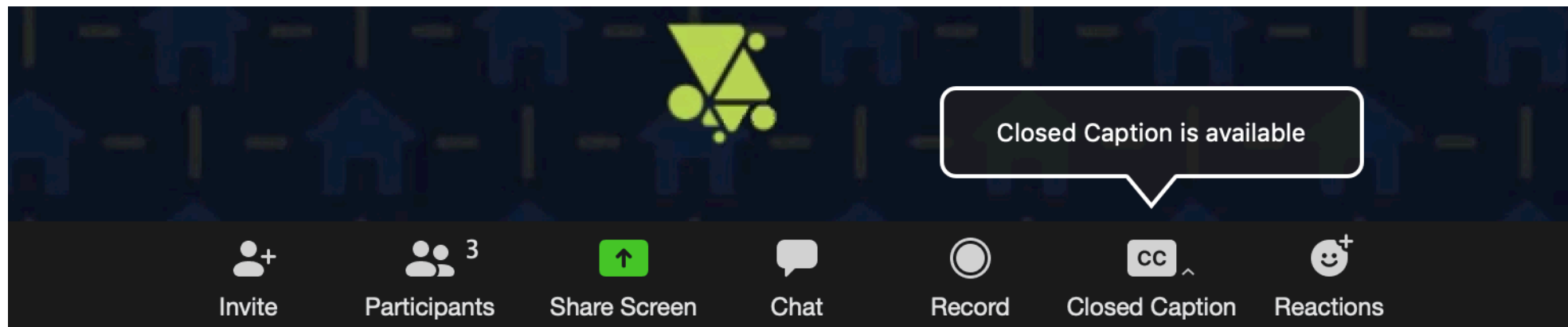
Follow Us

twitter.com/PreventConnect

facebook.com/PreventConnect

How to use Zoom

- ▶ Text chat
- ▶ PowerPoint Slides
- ▶ Polling Questions
- ▶ Phone
- ▶ Closed Captioning
- ▶ Web Conference Guidelines



PreventConnect

- ▶ Domestic violence/intimate partner violence
- ▶ Sexual violence
- ▶ Violence across the lifespan, including child sexual abuse
- ▶ Prevent before violence starts
- ▶ Connect to other forms of violence and oppression
- ▶ Connect to other prevention practitioners

SAAM Day of Action



Upcoming web conference

PREVENTING VIOLENCE IN OUR HOMES

Meeting this moment with
connection, care, and justice

Tuesday, April 14th
11 am PT | 2pm ET



Let's Connect

Sexual and Intimate Partner Violence
Prevention During a Pandemic

Tuesday, April 7th
12:30pm PT | 3:30pm ET



PreventConnect is a national project of the California Coalition Against Sexual Assault sponsored by the U.S. Centers for Disease Control and Prevention. The views and information provided in this web conference do not necessarily represent the official views of the U.S. government, CDC or CALCASA.

Objectives

- ▶ Describe challenges and opportunities for advancing sexual and intimate partner violence prevention during the coronavirus and COVID-19 pandemic
- ▶ Identify ways to stay connected to the field remotely
- ▶ Discuss implications for community- and societal-level prevention

Lessons from the past - 1989 San Francisco Earthquake



What are you doing to take care of yourselves?

Text Chat Question



Chat

From Me to **Everyone**:

Use this text chat box to respond to our questions, ask your own, and connect with others!

To: **Everyone** ▼

Type message here...

Meet Our Guests



Alejandra Aguilar

Statewide Prevention Specialist, California
Partnership to End Domestic Violence
pronouns: She/her/hers



Sarah Orton

Project Coordinator, California Coalition Against
Sexual Assault
pronouns: She/Her/Hers

This moment in time calls upon us to purposefully restore humanity for all. When we work together, care for ourselves and each other, and stay connected to the core values that guide us, social transformation is possible.

- [Arlene Vassell, National Resource Center on Domestic Violence](#)

<https://vawnet.org/news/redefining-we-building-beloved-communities>

What are you doing to take care of your communities?

Text Chat Question



Chat

From Me to **Everyone**:

Use this text chat box to respond to our questions, ask your own, and connect with others!

To: **Everyone** ▼

Type message here...

What we heard from you



Let's Connect: Tell Us About What's Happening With Prevention During the COVID-19 Pandemic

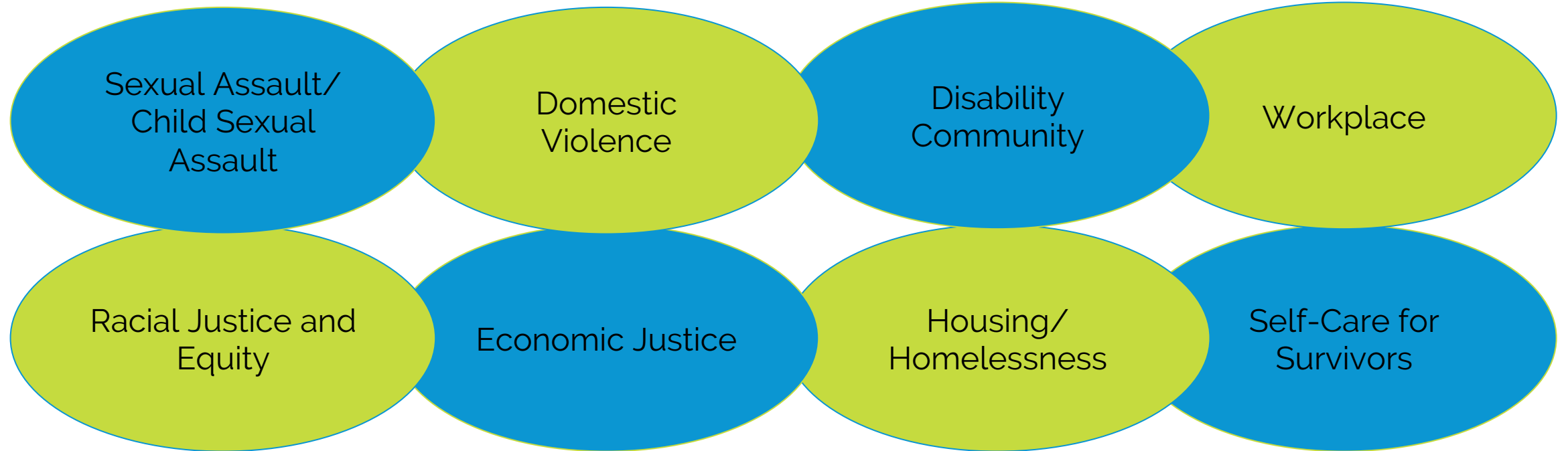
Challenges

- ▶ Supporting survivors
- ▶ In-school programming
- ▶ In-person SAAM events cancelled
- ▶ Community's focus is elsewhere
- ▶ What works online and what doesn't?

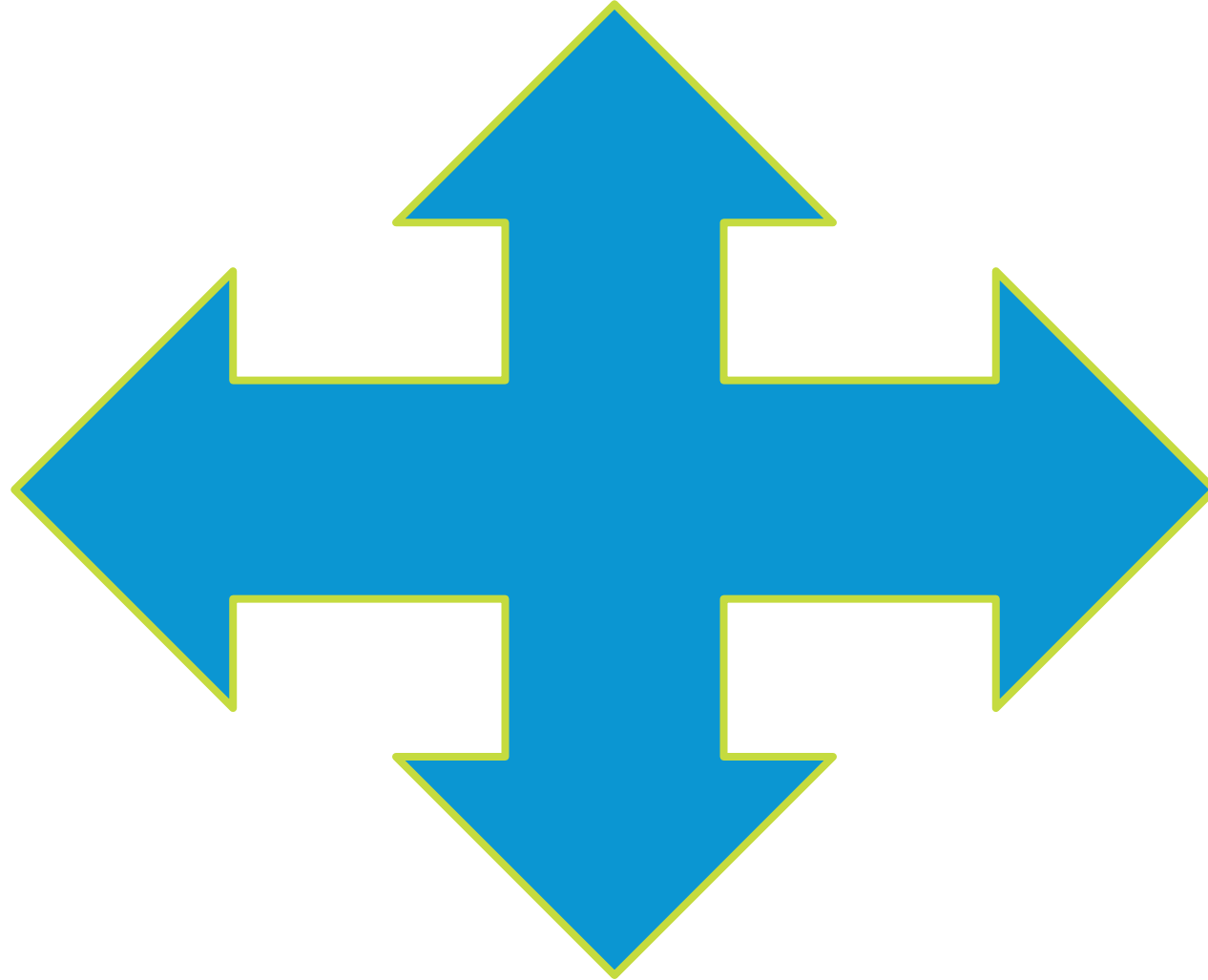
Opportunities

- ▶ Virtual engagement
- ▶ Time to research, plan, expand knowledge
- ▶ New partnerships and collaborations
- ▶ Make connections to system issues, health disparities, inequities

Resources for COVID-19 Response from NSVRC



What does it mean to be a preventionist right now?

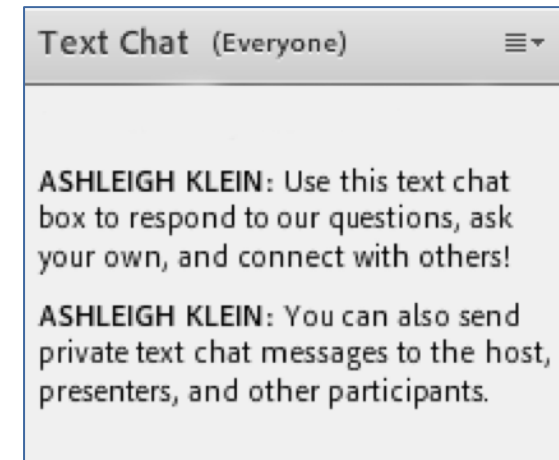


What are the needs?

What challenges do
you see in
continuing
prevention efforts in
your communities?

Text Chat Question

Use the Text Chat feature to
answer the question.



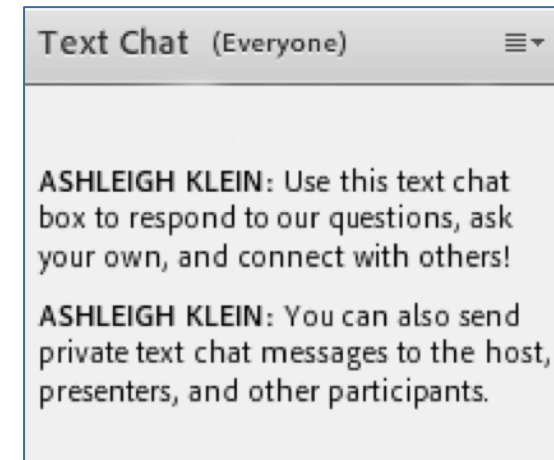
What are the needs?

Where do we go from here?

How are you continuing or adapting prevention efforts during COVID-19?

Text Chat Question

Use the Text Chat feature to answer the question.

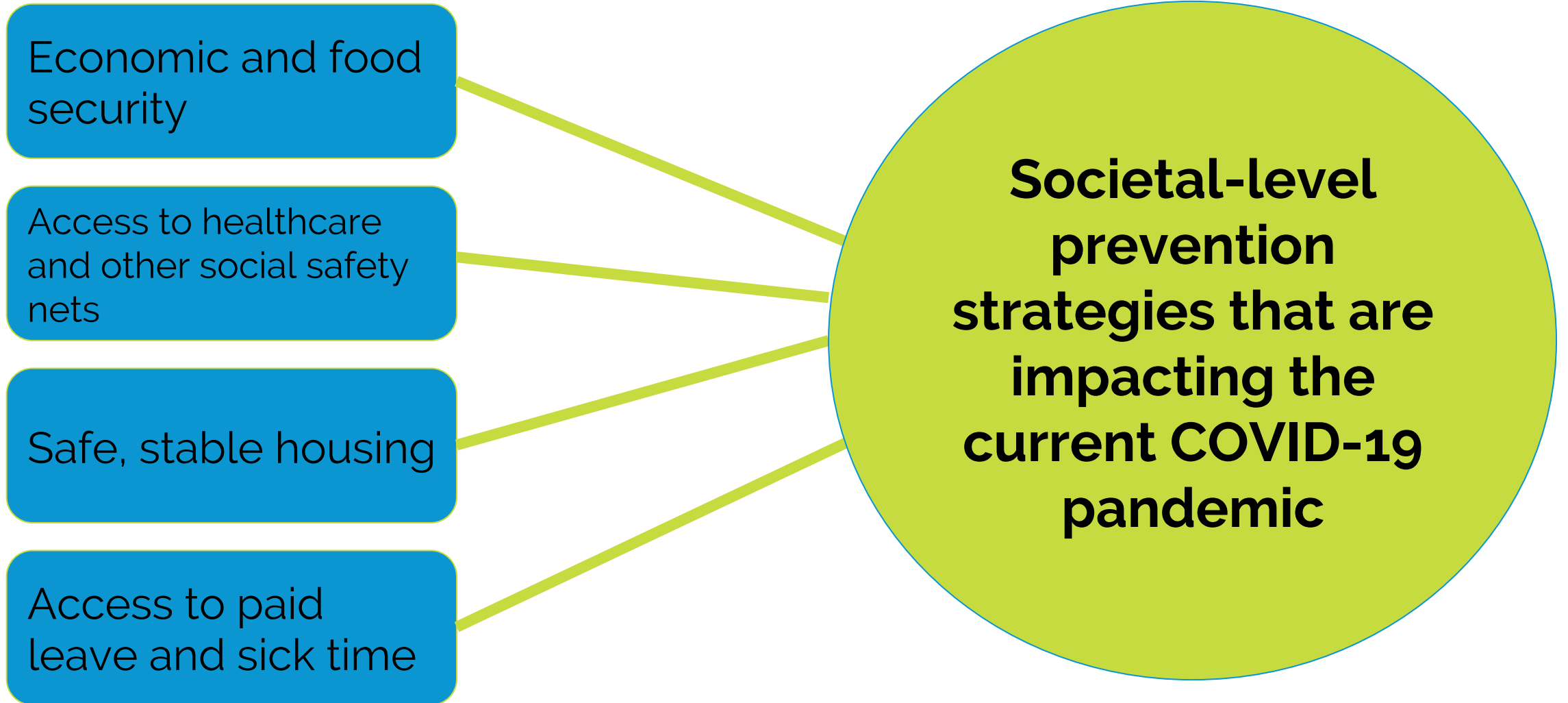


Everyone's health, safety, and wellbeing are dependent on the health, safety, and wellbeing of others. When we protect those who are most vulnerable, we protect our society as a whole.

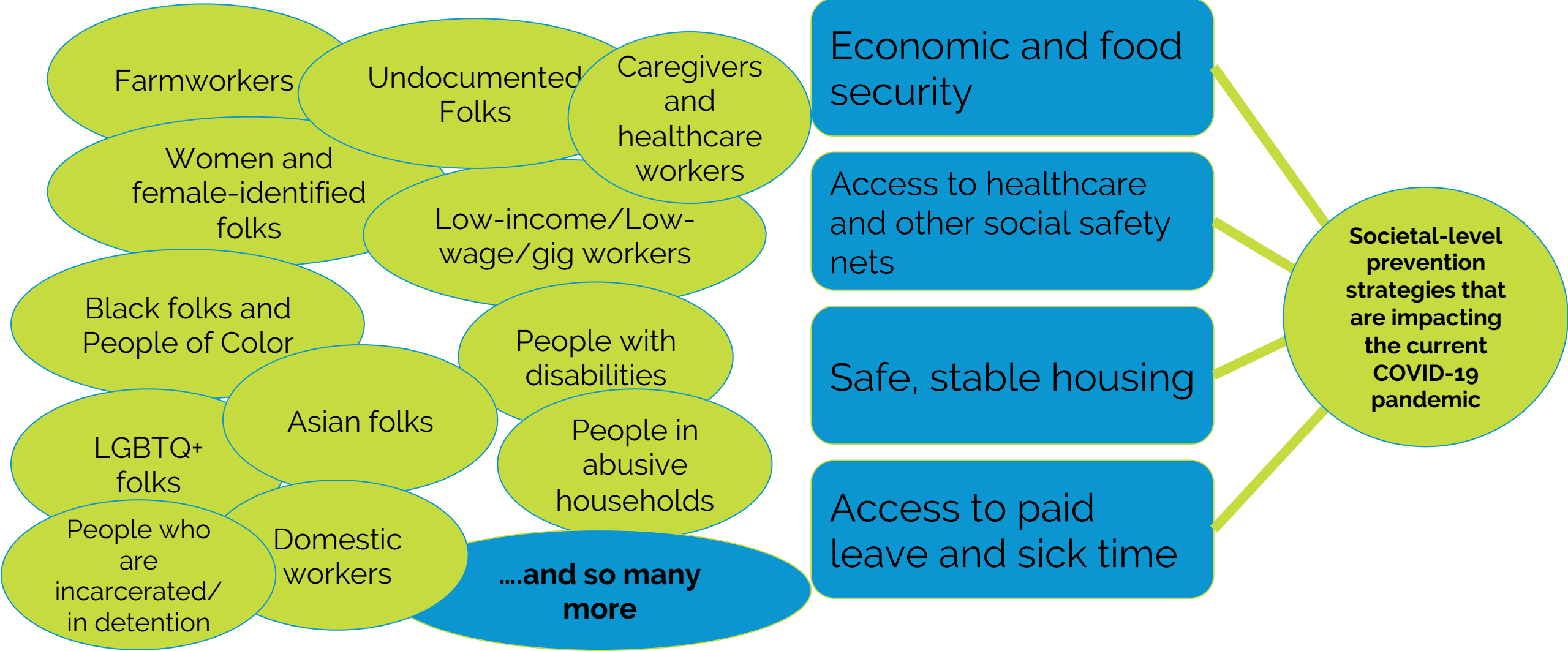
[-Prevention Institute Strategic Framework](#)

<https://us17.campaign-archive.com/?u=5f4bf5a36bd9f72789255d49a&id=e70e4d7b22>

System Connections



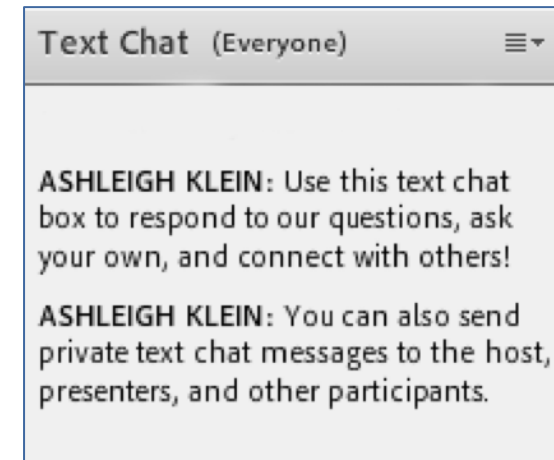
Who is left out? Who is most impacted?



How can you deepen your commitment and efforts to addressing root causes of violence and systems of oppression in your prevention work?

Text Chat Question

Use the Text Chat feature to answer the question.



What can we do now?

Moving forward with prevention

Links Between Pandemics and Violence Against Women and Children

Economic insecurity and poverty-related stress

Quarantines and social isolation

Disaster and conflict-related unrest and instability

Exposure to exploitative relationships

Reduced health service availability and first responders

Inability to leave abusive relationships/households

Virus-specific sources of violence

Exposure to violence and coercion in response efforts

Violence against healthcare workers

Protective Factors - Social Connectedness and Community Cohesion

Astoria organizers assist neighbors in need during COVID crisis

March 16, 2020



COVID-19 pandemic prompts Berkeley neighbors to help one another



In the time of coronavirus, some younger people are reaching out to help seniors. (Note: Current health guidelines advise people not to stand this close.) Photo: Terrence McNally/Creative Commons

U.S. veterans volunteer to patrol SF Chinatown amid coronavirus-related racism

"It's just a lot of these incidents don't get reported, they don't make the news," the founder said.

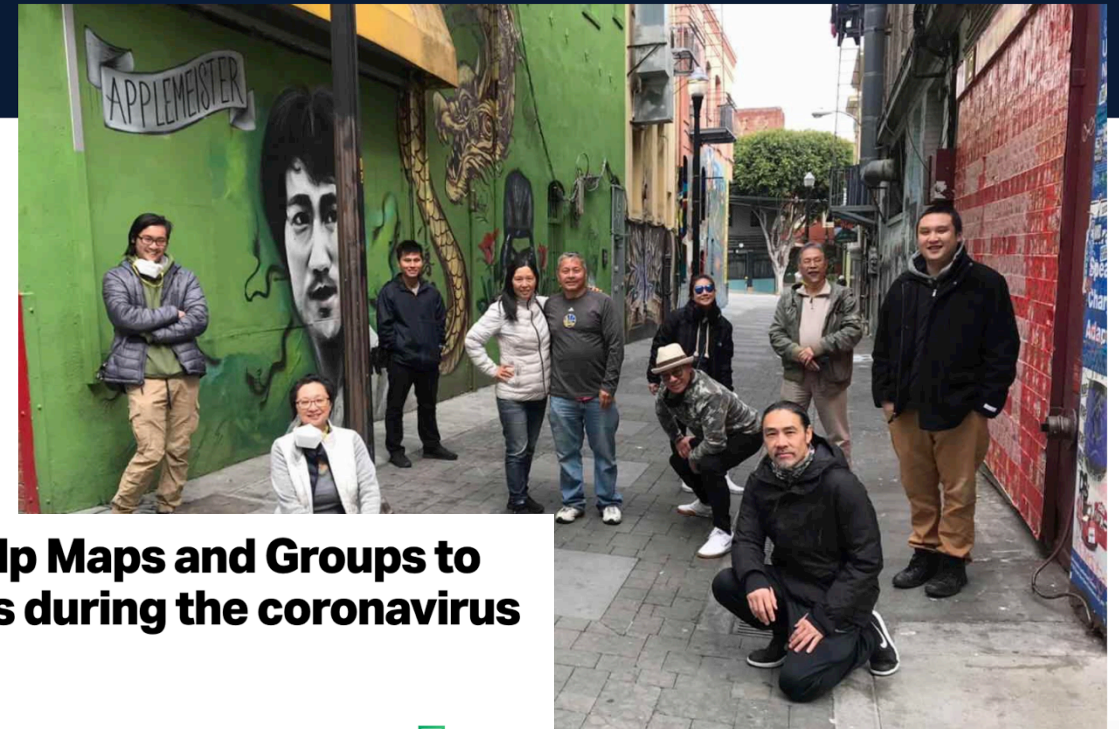


Photo: Courtesy SF Peace Collective

Nextdoor adds Help Maps and Groups to connect neighbors during the coronavirus outbreak

Sarah Perez @sarahintampa / 12:31 pm PDT • March 19, 2020

 Comment

Engaging Adults to Prevent Violence in the Home

Build Relationships and Coalitions

Make a plan and show connections



Self- and community-care

COVID-19 Mutual Aid Fund for LGBTQI+ BIPOC Folks

COVID-19 RELIEF FUND FOR LGBTQI+ BIPOC FOLKS

1000 Total Responses

1000 Completed Responses

See all

TEAM FUNDRAISER

Amita Swadhin and 2 others are organizing this fundraiser on behalf of Tara Jae.

\$158,497 raised of \$250,000 goal

1.6K donors 14K shares 1.6K followers

Donate now

Share

61 people just donated

"We're all actually experts in our own well-being, so what people have done before in the past can help them now."

Aiysha Malik, World Health Organization



"Thriving, healing and hurting can all happen simultaneously."

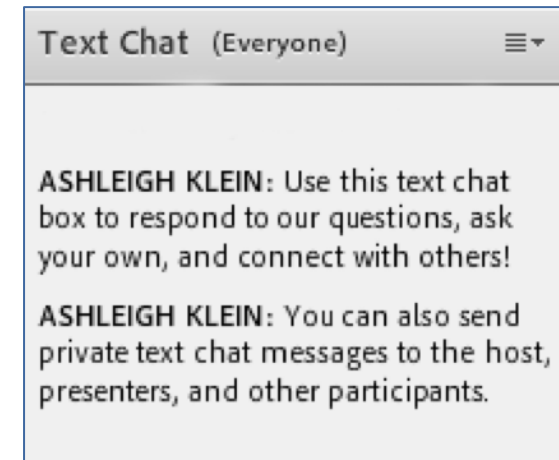
Arlene Vassell, National Resource Center on Domestic Violence



What opportunities for prevention exist now?

Text Chat Question

Use the Text Chat feature to answer the question.



“Right now, we are all aware of our impact on others, our community and world, but this is a power we always have against the hurtful behaviors, attitudes, and beliefs that make abuse and violence possible. I want folks to know that they always have power to create the world they want to live in :)”

--Monica Reyna, The Advocates

Prevention Activities While Physically Distanced

- ▶ Blog: “Get Engaged Online in Sexual Assault Awareness Month”
<https://www.nsvrc.org/blogs/get-engaged-online-sexual-assault-awareness-month>



Upcoming web conference

PREVENTING VIOLENCE IN OUR HOMES

Meeting this moment with
connection, care, and justice

Tuesday, April 14th
11 am PT | 2pm ET





prevent
connect

PreventConnect.org

info@PreventConnect.org

PreventConnect.org/email – email group

Learn.PreventConnect.org – eLearning

Follow Us

twitter.com/PreventConnect

facebook.com/PreventConnect