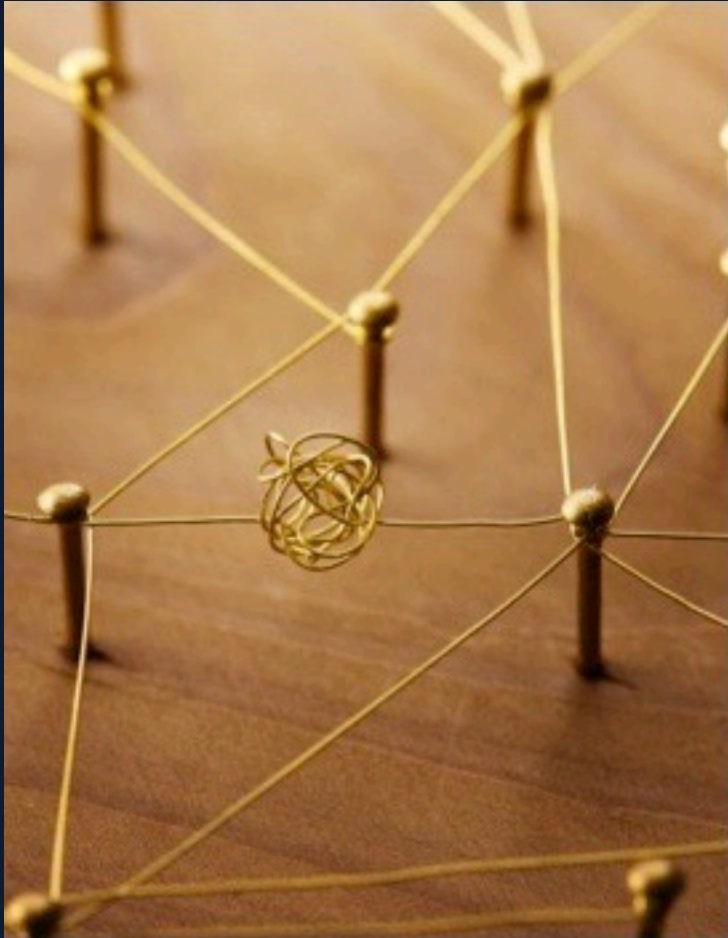


Welcome, this web conference will begin soon



# Engagement as a Process and Strategy

Strengthening connections and  
leadership opportunities to prevent  
sexual and intimate partner violence

Thursday, December 3<sup>rd</sup>, 2020



PREVENTION  
INSTITUTE



prevent  
connect

# Meet the PreventConnect Team



Ashleigh Klein-Jimenez  
Director of Prevention  
she/her/hers



Tori VandeLinde  
Project Coordinator  
she/her/hers



prevent  
connect

[PreventConnect.org](http://PreventConnect.org)

[info@PreventConnect.org](mailto:info@PreventConnect.org)

[PreventConnect.org/email](http://PreventConnect.org/email) – email group

[Learn.PreventConnect.org](http://Learn.PreventConnect.org) – eLearning

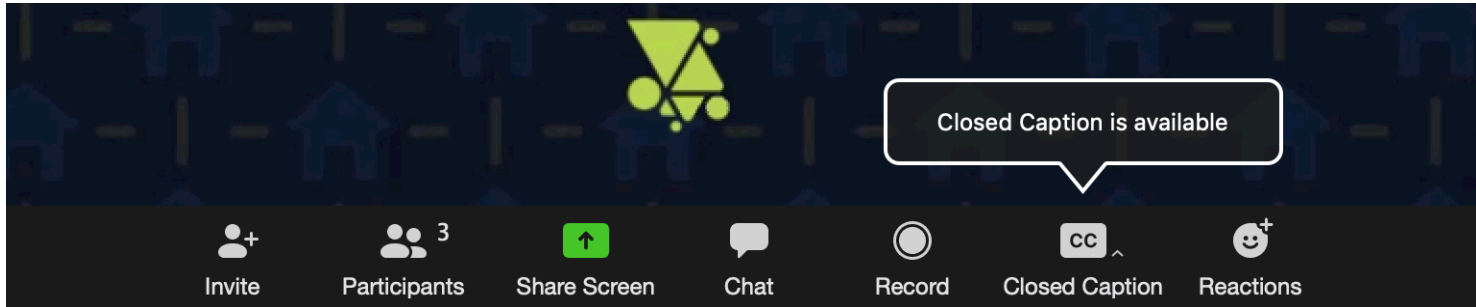
Follow Us

[twitter.com/PreventConnect](https://twitter.com/PreventConnect)

[facebook.com/PreventConnect](https://facebook.com/PreventConnect)

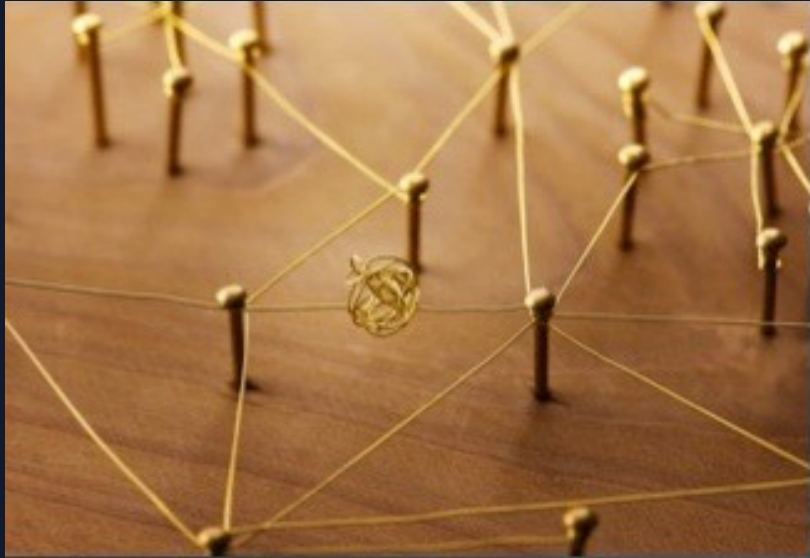
# How to use Zoom

- ▶ Text chat
- ▶ PowerPoint Slides
- ▶ Polling Questions
- ▶ Phone
- ▶ Closed Captioning
- ▶ Web Conference Guidelines



# PreventConnect

- ▶ Domestic violence/intimate partner violence
- ▶ Sexual violence
- ▶ Violence across the lifespan, including child sexual abuse
- ▶ Prevent before violence starts
- ▶ Connect to other forms of violence and oppression
- ▶ Connect to other prevention practitioners



## Engagement as a Process and Strategy

Strengthening connections and leadership opportunities to prevent sexual and intimate partner violence

Thursday, December 3<sup>rd</sup>, 2020



PreventConnect is a national project of the California Coalition Against Sexual Assault sponsored by the U.S. Centers for Disease Control and Prevention. The views and information provided in this web conference do not necessarily represent the official views of the U.S. government, CDC or CALCASA.



# Meet the Prevention Institute Team



**Alisha Somji**

Program Manager  
she/her/hers



**Lisa Fujie Parks**

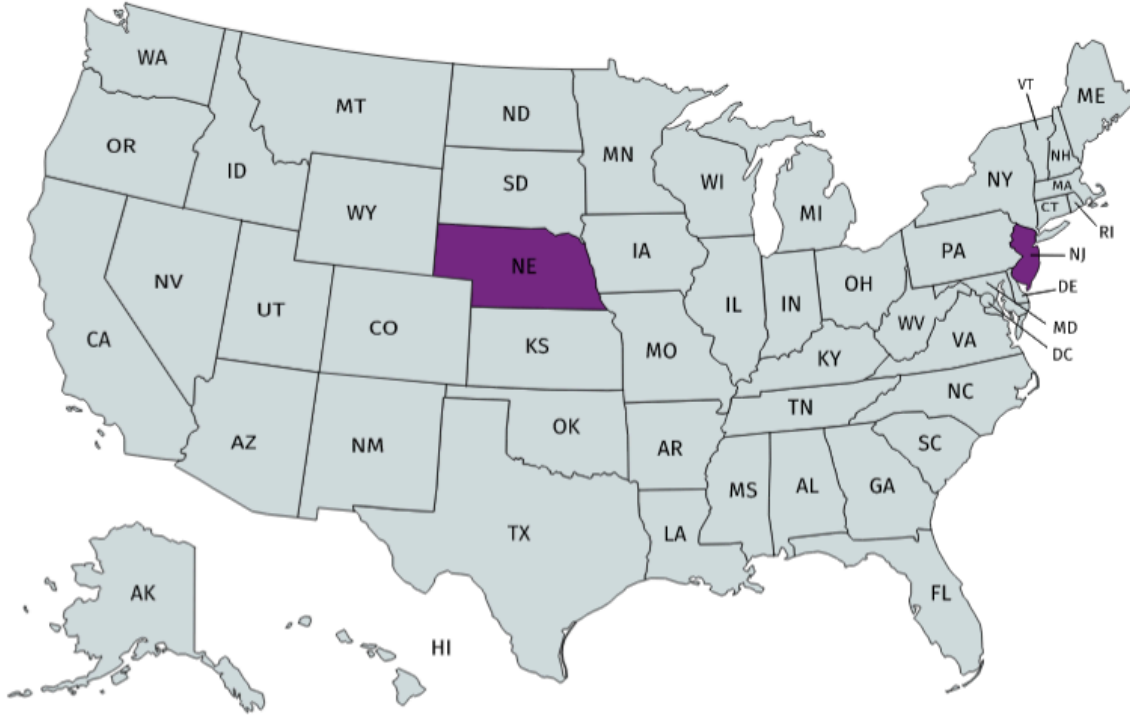
Associate Program Director  
she/her/hers

# Objectives

- ▶ Describe how community leadership and engagement supports sexual and intimate partner violence prevention
- ▶ Identify actions communities are taking to build leadership and engagement in sexual and intimate partner violence prevention
- ▶ Discuss unique challenges and opportunities to doing this work in the context of the current climate

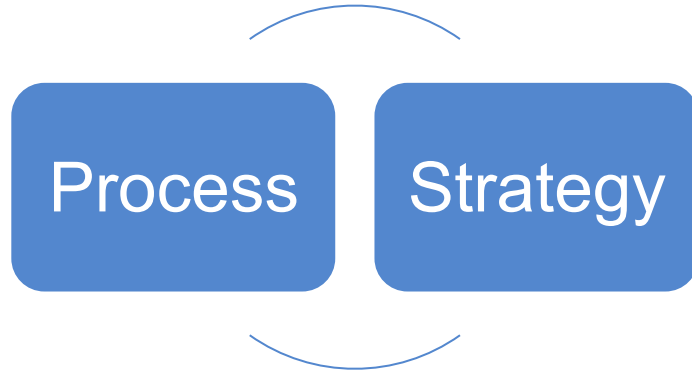


# Locations and Agencies Featured Today



- ▶ Nebraska Coalition to End Sexual and Domestic Violence
- ▶ New Jersey Department of Children and Families, Division on Women

# Engagement as a process and strategy



- ▶ How might the process of community engagement improve our sexual and intimate partner violence prevention strategies?
- ▶ How might community engagement be a strategy for preventing sexual and intimate partner violence?

How might the process  
of engagement  
improve our sexual  
and intimate partner  
violence prevention  
strategies?

Text Chat Question



Chat

From Me to **Everyone**:

Use this text chat box to respond to our questions, ask your own, and connect with others!

To: **Everyone** ▼

Type message here...

“Belonging suggests when you join something, you have the power and standing to participate in the cocreation of the thing you’re joining.”

john a powell, Haas Institute

“Move at the speed of trust.”

Adrienne Maree Brown

# BECKIE MASAKI

movement maker, leader, founder



"If we are serious about ending domestic violence, then we are serious about taking the experiences and perspectives of those most on the margins, and bringing them into the very center of our movement."

**Break** the Cycle



Because Everyone Deserves a  
Healthy Relationship

# Engagement as a strategy

- ▶ Research shows community support/cohesion—the extent that neighbors know each other, are connected to their community and their environment, and the extent that neighbors working together feel a sense of power and autonomy—is a protective factor against multiple forms of violence.
- ▶ Community mobilization can enhance social cohesion and collective efficacy
- ▶ Building capacity in the sociocultural environment facilitates addressing other factors for prevention.



Social  
networks  
& trust



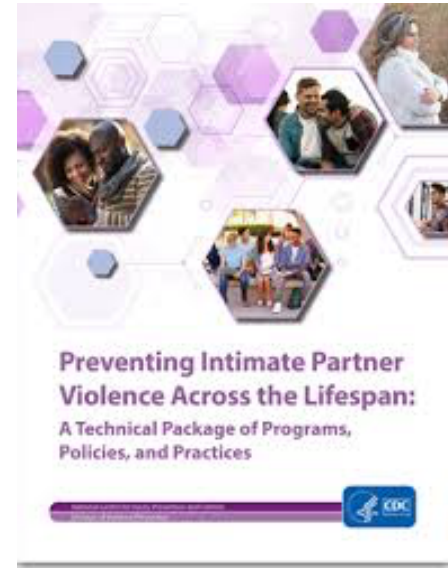
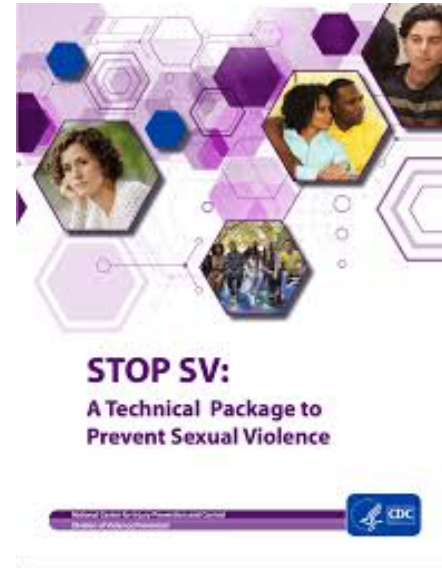
Willingness to take  
action on sexual or  
intimate partner  
violence as a  
community issue



Norms & culture that support  
equitable relationships, non-  
violence, and engagement in  
family matters.

# Engagement is needed to...

- ▶ Build skills around healthy sexuality and relationships
- ▶ Change social norms around violence (including mobilizing men and boys)
- ▶ Create protective environments
- ▶ Strengthen economic supports
- ▶ Etc.





# What is your current level of engagement?

Select the most applicable:

- a) Deny access to decision-making processes
- b) Provide the community with relevant information
- c) Gather input from the community
- d) Ensure community assets, needs & concerns are integrated into process & inform planning
- e) Ensure community capacity to play a leadership role in implementation of decisions
- f) Foster democratic participation and equity by planning full decision-making in the hands of community

# Meet the Guest Speakers



## **Arianna Cohen**

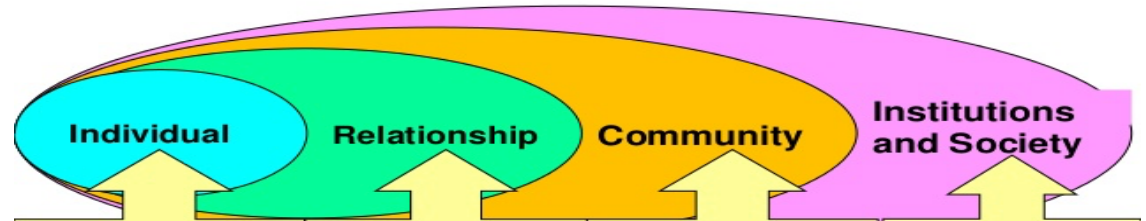
Rape Prevention Education  
(RPE) Program Specialist,  
Department of Children and  
Families, Division on Women  
she/her/hers



# Rape Prevention and Education (RPE) in NJ

- ▶ Funding from the CDC
- ▶ New 5-year cycle
- ▶ New approach

## Social Ecological Model



## Areas and populations of focus

**Creating Protective Environments  
for LGBTQ+**

**Developing Leadership  
Opportunities for Girls**

**Engaging Men and Boys as Allies**

# Advancing our work through existing and new partnerships and collaborations



# What we have done thus far.....



- ▶ Planning Year
- ▶ Gathered qualitative and quantitative data to tell the complete story
  - ▶ Community Conversations across the state
  - ▶ Inform the implementation process
- ▶ Monthly Gatherings
- ▶ TA & Partnerships
- ▶ Statewide Capacity Building

# How are you and your organization/agency building relationships in the community?

Text Chat Question



Chat

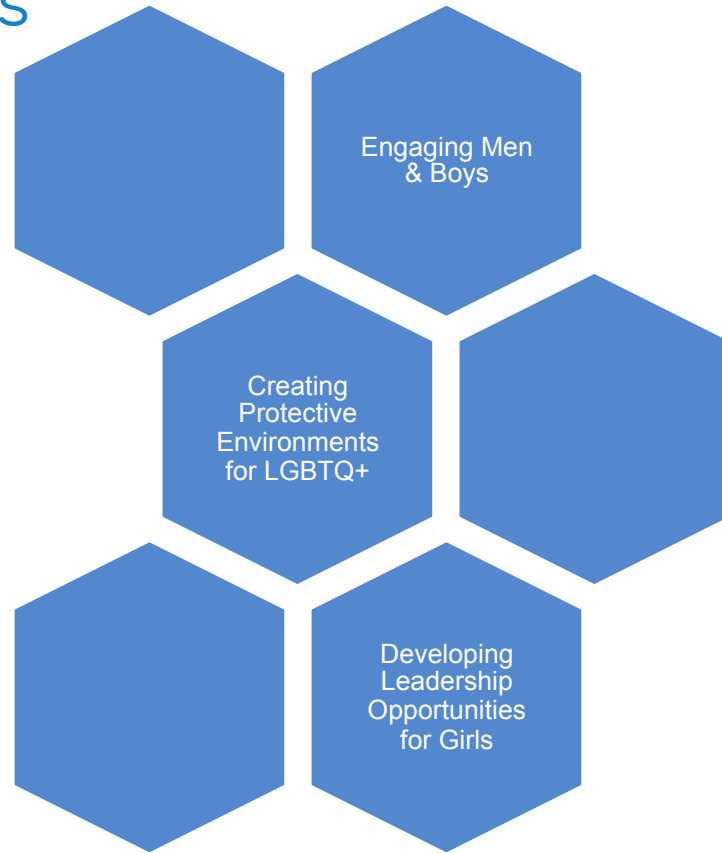
From Me to **Everyone**:

Use this text chat box to respond to our questions, ask your own, and connect with others!

To: **Everyone** ▼

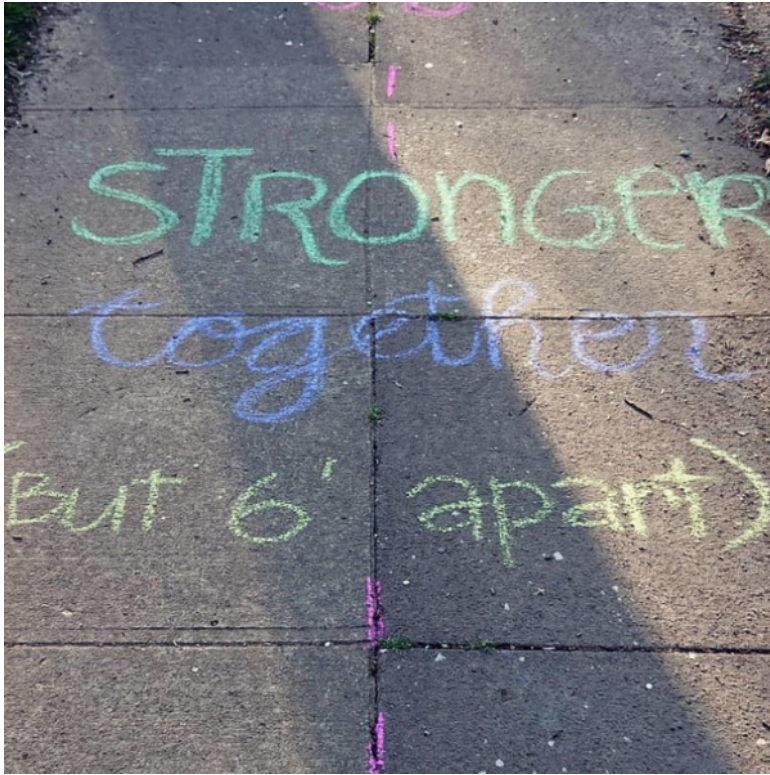
Type message here...

# Community conversations





# Engagement during a pandemic



- ▶ Community gatherings
- ▶ Addressing issues of digital connectivity

# Meet the Guest Speaker



## **Mike Wilson**

Youth Engagement Coordinator, Nebraska  
Coalition to End Sexual and Domestic Violence  
he/him/his



# NEBRASKA COALITION TO END SEXUAL AND DOMESTIC VIOLENCE

Engage

*One Movement. One Voice.*

# What is Nebraska Engage?

Engage

*One Movement. One Voice.*



# Personal Journey

issues  
community  
Integrated Media  
Master's  
people  
cultivate  
organizing  
development  
planning  
engagement  
campaigns  
strategic  
Degree  
personal  
leaders

# otes and Voices

---

Bringing Our Voice To The Ballot Box

## Polling Question

How many of our participants did voter registration and get out the vote work this past election?



# otes and Voices

---

Bringing Our Voice To The Ballot Box



# Young Leaders Coalition

Letting Leaders Lead

# What questions do you have for our guests?

Text Chat Question



Chat

From Me to **Everyone**:

Use this text chat box to respond to our questions, ask your own, and connect with others!

To: **Everyone** ▾

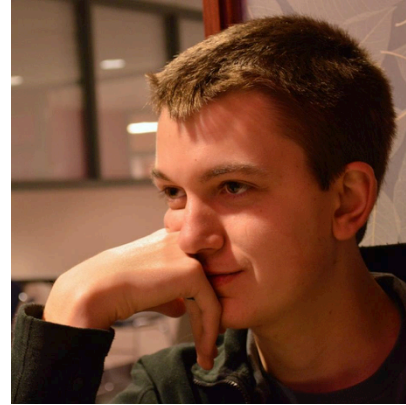
Type message here...

# Why is it important for practitioners and advocates focused on sexual and intimate partner violence prevention to focus on community engagement and leadership?



**Arianna Cohen**

Rape Prevention Education  
(RPE) Program Specialist,  
Department of Children and  
Families, Division on Women

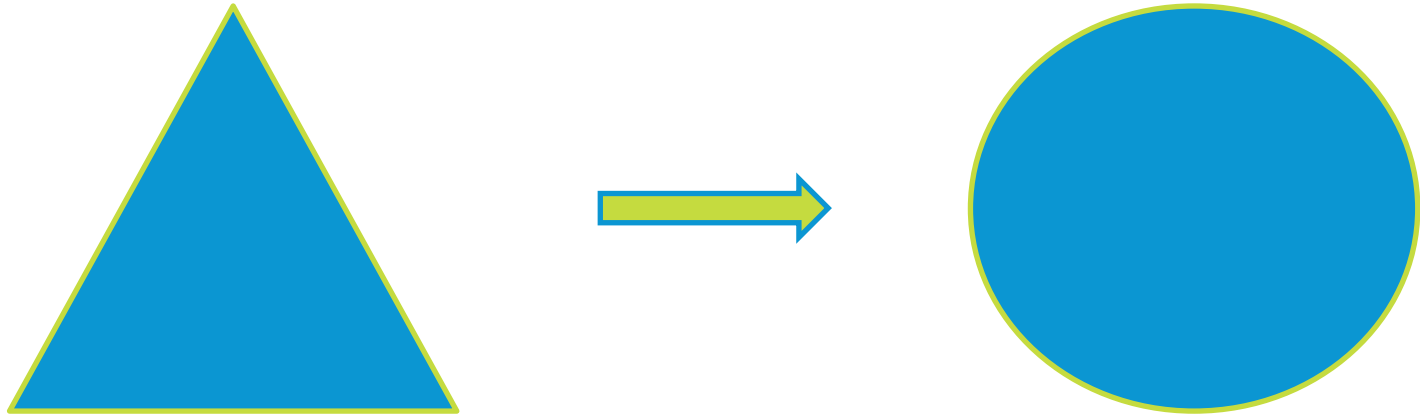


**Mike Wilson**

Youth Engagement Coordinator,  
Nebraska Coalition to End  
Sexual and Domestic Violence

# Lessons from New Jersey

“Nothing about us without us”



# Lessons from Nebraska

Letting leaders lead

Engage

# Tools and Resources



# Sexual Violence Prevention during the COVID-19 Pandemic: Adapting in an Ever-Changing Landscape

## Workshop One: Creating Emergent Spaces for Sexual Violence Prevention during COVID-19





**NEBRASKA COALITION**  
TO END SEXUAL AND DOMESTIC VIOLENCE

**Ariana Cohen**

RPE Program Specialist

[Arianna.Cohen@dcf.nj.gov](mailto:Arianna.Cohen@dcf.nj.gov)

**Mike Wilson**

Youth Engagement Coordinator

<https://www.nebraskacoalition.org/>

[Youth@nebraskacoalition.org](mailto:Youth@nebraskacoalition.org)





**PREVENTION**  
INSTITUTE



prevent  
connect

[PreventionInstitute.org](http://PreventionInstitute.org)

[alisha@preventioninstitute.org](mailto:alisha@preventioninstitute.org) – Alisha

Follow Us

[twitter.com/preventioninst](https://twitter.com/preventioninst)

[facebook.com/PreventionInstitute.org](https://facebook.com/PreventionInstitute.org)

[PreventConnect.org](http://PreventConnect.org)

[info@PreventConnect.org](mailto:info@PreventConnect.org)

[PreventConnect.org/email](https://PreventConnect.org/email) – email group

[Learn.PreventConnect.org](https://Learn.PreventConnect.org) – eLearning

Follow Us

[twitter.com/PreventConnect](https://twitter.com/PreventConnect)

[facebook.com/PreventConnect](https://facebook.com/PreventConnect)