

Welcome, this web conference will begin soon



**COMMUNITY-LEVEL AND COMMUNITY-DRIVEN
SEXUAL VIOLENCE PREVENTION IN ALCOHOL-
SERVING ESTABLISHMENTS DURING THE
COVID-19 PANDEMIC**



Friday, May 21st, 2021 | 11 AM-12:30 PM PT/2 PM-3:30 PM ET

Meet the PreventConnect Team



Ashleigh Klein-Jimenez
Director of Prevention
she/her/hers



Tori VandeLinde
Project Coordinator
she/her/hers



prevent
connect
A ValorUS PROJECT

PreventConnect.org

info@PreventConnect.org

PreventConnect.org/email – email group

Learn.PreventConnect.org – eLearning

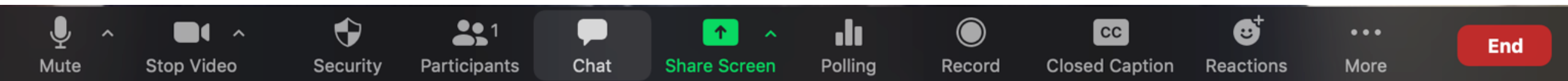
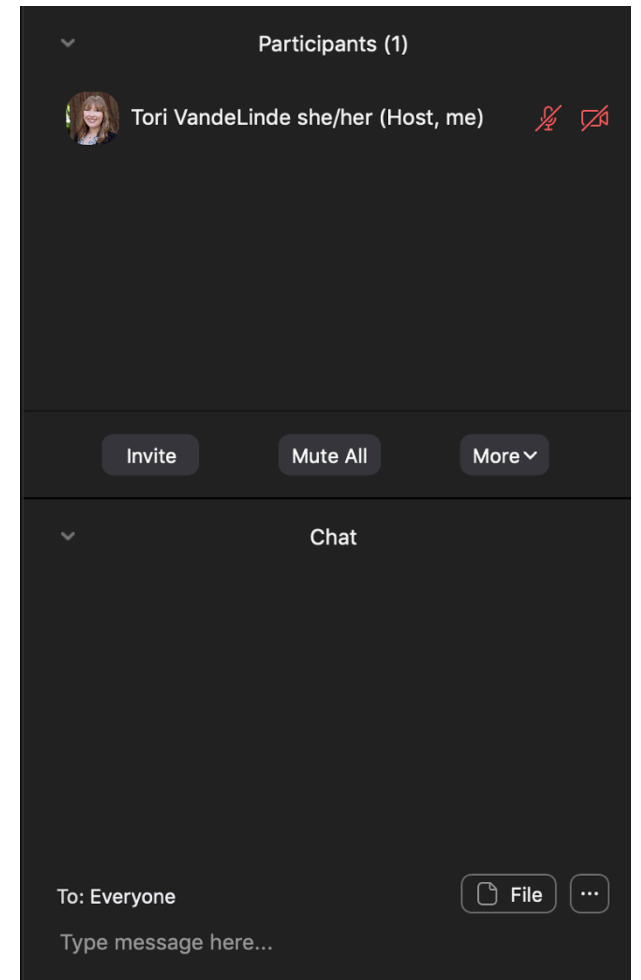
Follow Us

twitter.com/PreventConnect

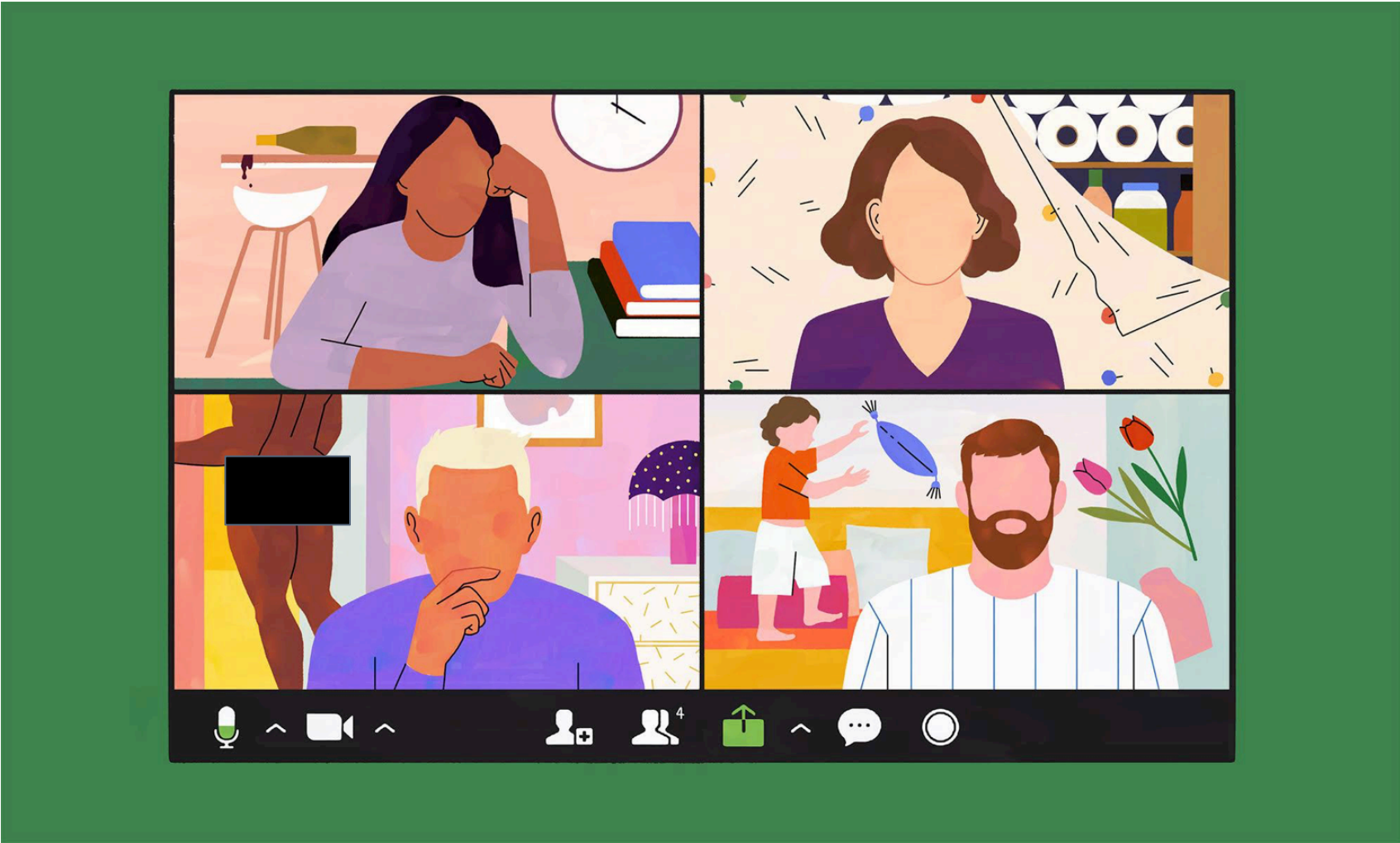
facebook.com/PreventConnect

How to use Zoom + Housekeeping

- ▶ Text chat and private chat
 - ▶ Please send a private chat message for help.
- ▶ PowerPoint Slides
- ▶ Polling Questions
- ▶ Phone
- ▶ Closed Captioning
- ▶ Web Conference Guidelines



How this landscape is impacting us



PreventConnect

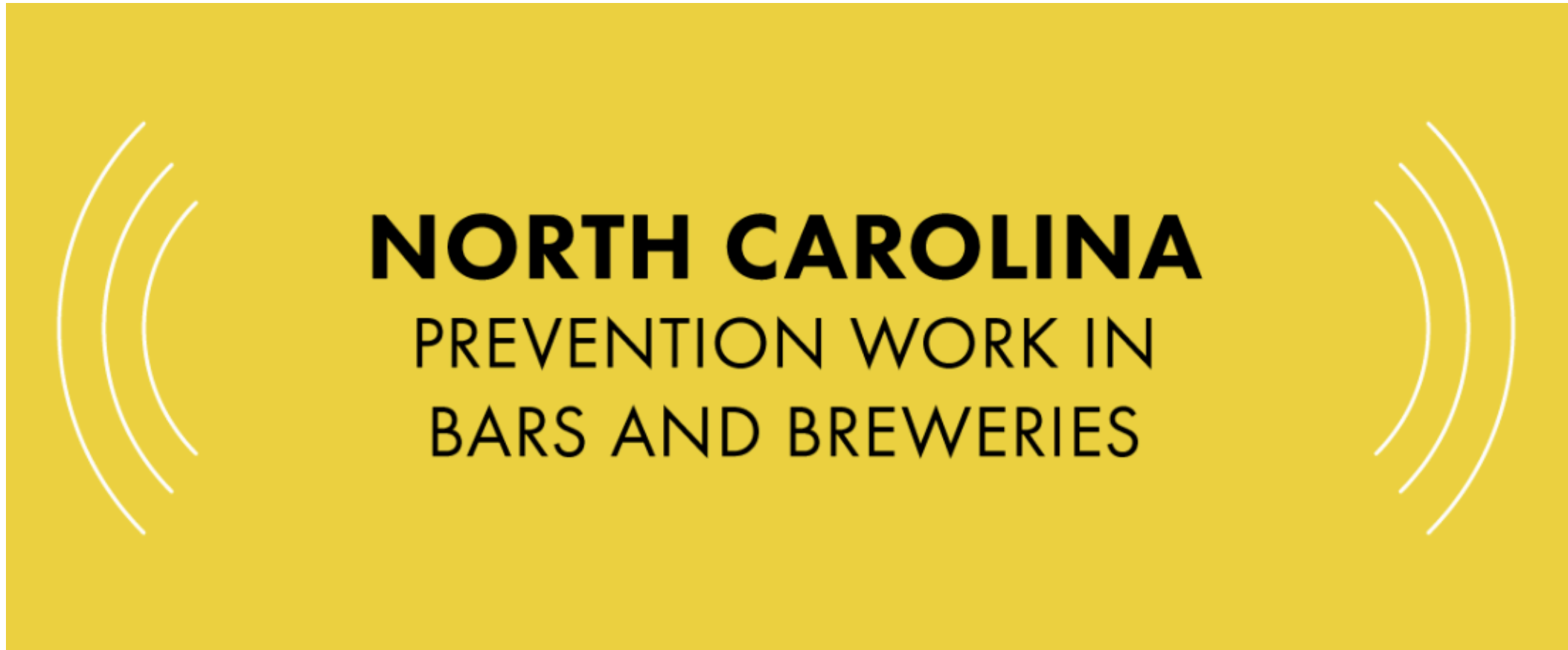
- ▶ Domestic violence/intimate partner violence
- ▶ Sexual violence
- ▶ Violence across the lifespan, including child sexual abuse
- ▶ Prevent before violence starts
- ▶ Connect to other forms of violence and oppression
- ▶ Connect to other prevention practitioners

Past conferences/resources



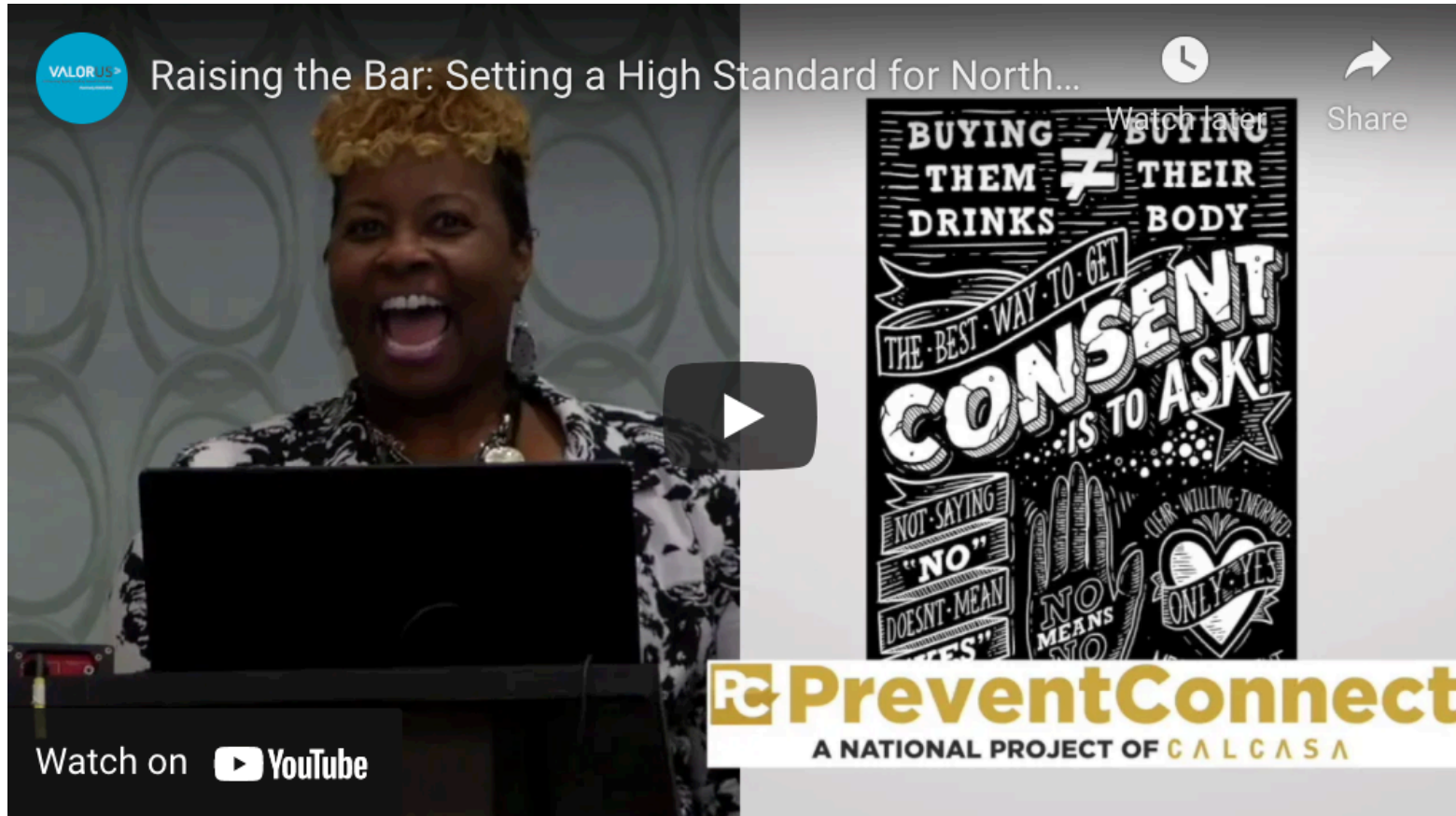
<http://www.preventconnect.org/2019/09/cheers-to-creating-protective-environments-sexual-and-intimate-partner-violence-prevention-in-bars-and-alcohol-serving-establishments/>

Past conferences/resources



<http://www.preventconnect.org/2018/10/podcast-series-partnering-with-bars-to-prevent-sexual-violence-across-north-carolina/>

Past conferences/resources



<http://www.preventconnect.org/2018/10/ignite-talk-raising-the-bar-setting-a-high-standard-for-north-carolina-bar-none/>



COMMUNITY-LEVEL AND COMMUNITY-DRIVEN SEXUAL VIOLENCE PREVENTION IN ALCOHOL- SERVING ESTABLISHMENTS DURING THE COVID-19 PANDEMIC



Friday, May 21st, 2021 | 11 AM-12:30 PM PT/2 PM-3:30 PM ET

PreventConnect is a national project of ValorUS, formerly known as the California Coalition Against Sexual Assault sponsored by the U.S. Centers for Disease Control and Prevention. The views and information provided in this web conference do not necessarily represent the official views of the U.S. government, CDC or VALOR.

Objectives

- ▶ Describe the connections between community partnership and community-level sexual violence prevention in alcohol-serving establishments
- ▶ Identify examples of community-level sexual violence prevention in alcohol-serving establishments
- ▶ Discuss opportunities for partnership and sexual violence prevention with local alcohol-serving establishments

Situational Prevention

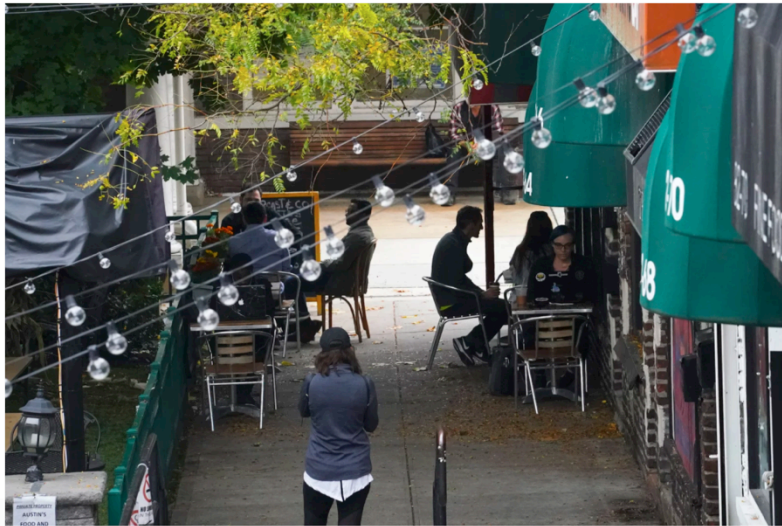
THE CORONAVIRUS CRISIS

Tipped Service Workers Are More Vulnerable Amid Pandemic Harassment Spike: Study

December 6, 2020 · 7:55 AM ET
Heard on Weekend Edition Sunday



5-Minute Listen + PLAYLIST



<https://www.npr.org/sections/coronavirus-live-updates/2020/12/06/943559848/tipped-service-workers-are-more-vulnerable-amid-pandemic-harassment-spike-study>

A graphic showing a stack of booklets. The top booklet has a cover with a photo of students walking and the title 'Enhancing Campus Sexual Assault Prevention Efforts THROUGH SITUATIONAL INTERVENTIONS'. The background is dark blue with faint upward-pointing arrows.

Enhancing Campus Sexual Assault Prevention Efforts
THROUGH SITUATIONAL INTERVENTIONS

The logo for 'prevent connect' is located in the bottom right corner of the graphic, featuring a stylized green and yellow triangle icon.

<http://www.preventconnect.org/2020/02/preventing-sexual-assault-on-campus-through-situational-prevention/>

Bystander Intervention in Bars

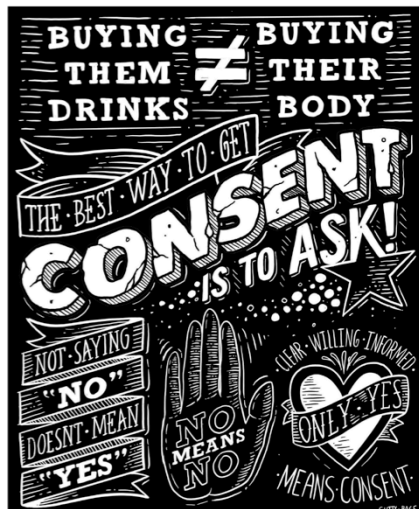


The **Arizona Safer Bars Alliance (ASBA)** is a statewide initiative of the Arizona Department of Health Services and The University of Arizona. The free five-hour Safer Bars patron safety training teaches bar staff to safely and effectively respond to sexual aggression.

Help make your bar a fun and safe environment for your patrons. Learn more about this initiative and how to become a safer bar.

<https://www.azdhs.gov/prevention/womens-childrens-health/womens-health/az-safer-bars-alliance/index.php>

ASBA bars participate in two sexual assault prevention events every year to show their commitment to community safety.



Sponsored by the OASIS Sexual Violence Prevention Task Force

<http://www.preventconnect.org/2018/10/podcast-series-partnering-with-bars-to-prevent-sexual-violence-across-north-carolina/>



<http://www.makeyourmovemissoula.org/bar-overview>

Community, Connection, & COVID-19

2019



2020

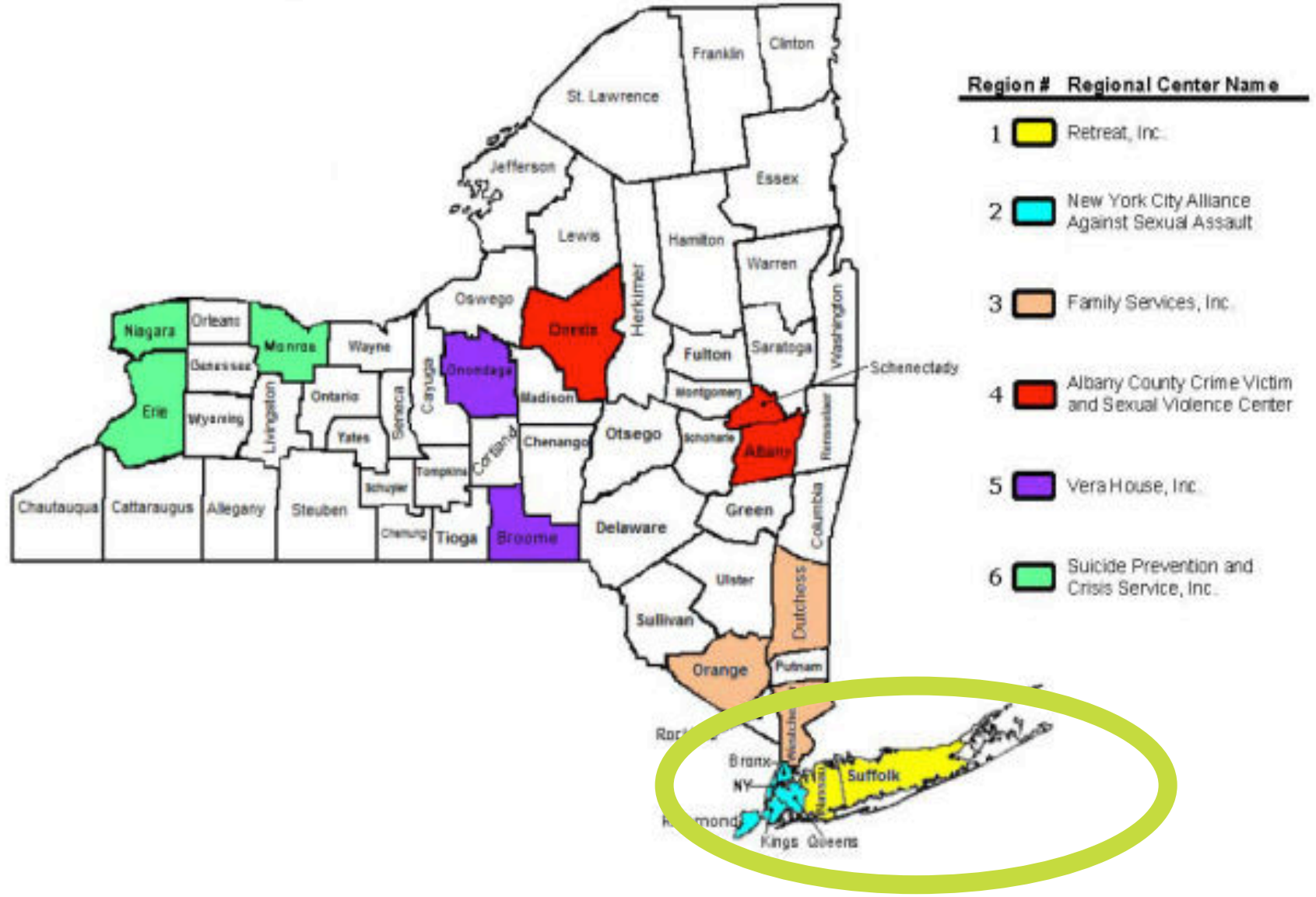


2021



Regional Center for Sexual Violence Prevention Providers Map

Place
+ Context



How are you currently partnering with bars, restaurants, and other alcohol-serving establishments to prevent sexual violence?

Text Chat Question

Use the Text Chat feature to answer the question.

▼ Chat

From Me to **Everyone**:

Use this text chat box to respond to our questions, ask your own, and connect with others!

To: **Everyone** ▼

Type message here...

Meet Our Guest



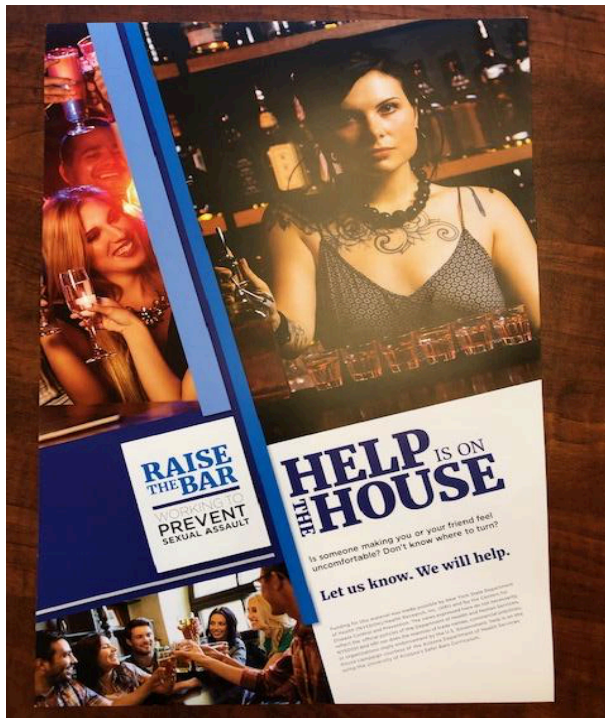
Sarah Samson

Project Coordinator, Sexual
Violence Prevention Program,
The Retreat, Inc.

pronouns: she/her/hers

Shifting Our Work

Forced to stop relying on face-to-face interactions



No one can do everything, but everyone can do something.



LONG ISLAND SAFER BARS INITIATIVE



Social Marketing

- Social Media Consultants (grow following, but target a certain age/location)
- Began with promoting and engaging partners via social media
- Strategize a bystander intervention banner (along with an ad)
- Social Norms campaign on IG

Look for the lighthouse! Another one of Long Island's beautiful lighthouses located in Kismet! Lighthouses mean safety and Patchogue goes above and beyond to have your back.

#patchogue #patchoguevillage
#lookforthelighthouse #raisethebar
#healthynightlife
#patchoguechamber
#patchoguenightlife
#bystanderintervention #safety

Ongoing Work During COVID

- Training
- Policy/Environmental Work
- Alive After 5 Summer Festival
- In-house policy handbooks for establishments
- Importance of community connectedness/relationship building with partners and stakeholders



How have you/can
you maintain
partnerships for
prevention now and
in the near future?

Text Chat Question

Use the Text Chat feature to
answer the question.



Chat

From Me to **Everyone**:

Use this text chat box to respond to our questions, ask
your own, and connect with others!

To: **Everyone** ▼

Type message here...

Meet Our Guests



Michelle Henkhaus
Prevention Program Coordinator,
New York Alliance Against Sexual Assault
she/her/hers



Eric McGriff
Prevention Coordinator,
Crime Victims Treatment Center
he/him/his

It's A VUCA World Out There...

VUCA = **Volatile, Uncertain, Complex, Ambiguous** world where change is continuous.

Info-Tech & Globalization creating more diverse and connected world

Machine Model/Technical interventions offer, at best, partial solutions to the problems **Complex Adaptive Systems** face

In a complex world, **change is not linear**



Our Approach

- ▶ Bridge the gap between evidence-supported interventions and real-life, local context through facilitation that integrates combined expertise and sees people as whole people.
- ▶ Fold trauma-informed practices into public health approaches for more accurate data, inclusive solutions, and to create conditions for emergence in an ever-evolving context.
- ▶ Cultural Humility and Humble Inquiry
- ▶ Psychological Safety

Bridging the Facilitation-Evaluation Gap

Epistemic Justice: fairness in knowledge and how knowledge is produced. From British Philosopher Miranda Fricker's identification of the unfairness built into systems of knowledge production, where certain viewpoints and personas are more represented, and hold more power.

Disintermediation: reducing intermediary interpretation of data and information to put decision-makers and stakeholders in contact with raw data rather than pre-analyzed insights.

Sense-Making: knowledge production as an activity where we use data toward a shared understanding of problem areas so as to generate the right action.

Complex Facilitation: an approach to facilitation designed to encourage emergence and allow for diversity. This form of facilitation disrupts regular group dynamics and facilitates through encouraging emergence and flow.

How can you practice prevention in your processes?

Text Chat Question

Use the Text Chat feature to answer the question.



Chat

From Me to **Everyone**:

Use this text chat box to respond to our questions, ask your own, and connect with others!

To: **Everyone** ▼

Type message here...

Community-driven policy approach

Nightlife Policy Workgroup

Engage nightlife and service providers to take actions to strengthen and advocate for policies and improve practices related to sexual violence prevention that are driven by nightlife and best available evidence and knowledge.

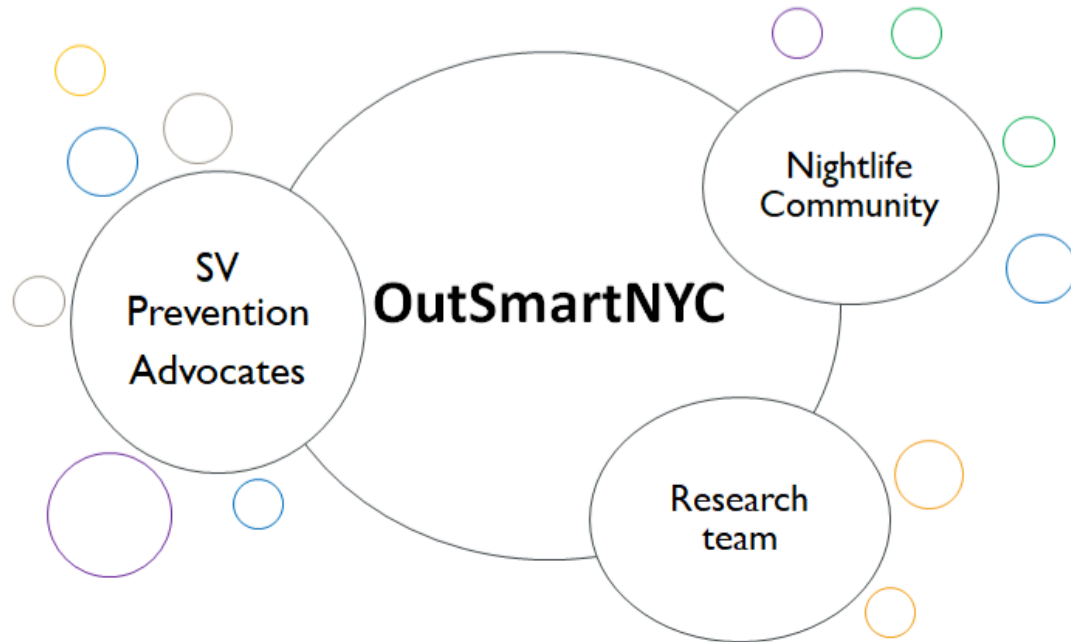
Shifts during the pandemic:

- Understand challenges facing venues throughout COVID
- Focus on policy advocacy and venue assessment tools
 - Enhanced training for security guards working in ASEs
 - Developing Best Practices Toolkit and Guide

Addressing venue policy and environment

Best Practices Toolkit for Sexual Violence Prevention in Nightlife Spaces

to provide nightlife venue owners and managers the tools to assess their establishments and make more informed decisions on venue changes that will help create safer nightlife environments free from sexual violence.



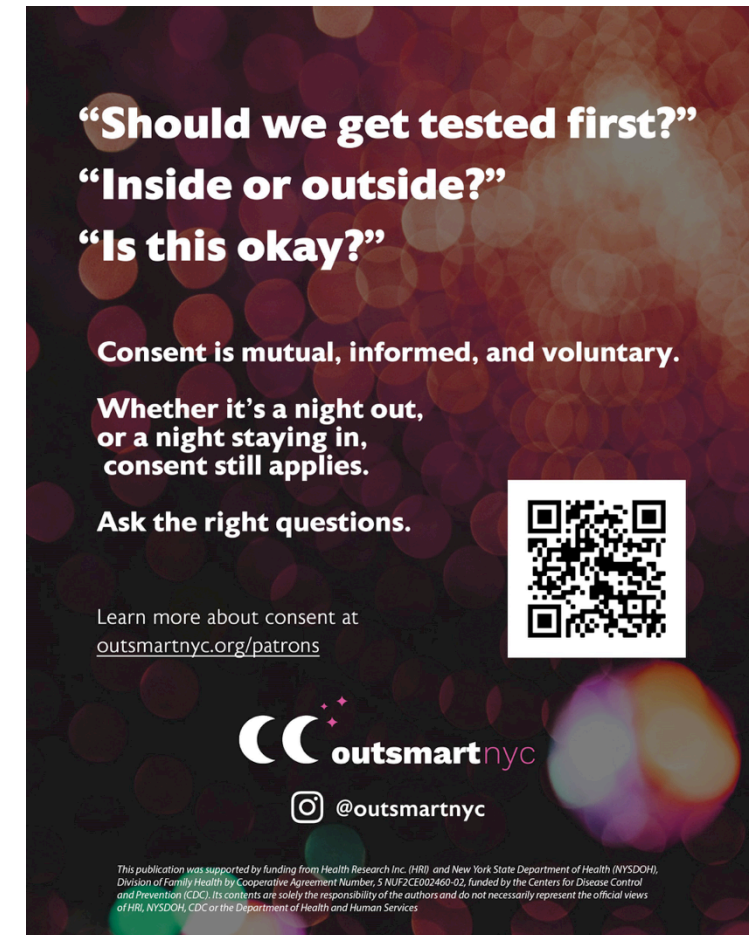
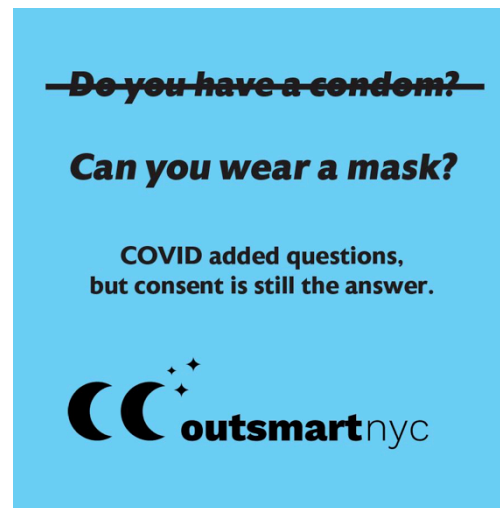
- Combining evidence-based research with community stakeholder input
 - Literature review
 - Feedback from nightlife stakeholders convened in policy workgroup

Addressing venue policy and environment

- *Best practices and recommendations regarding:*
 - Frontline Staff Training, Social and Physical Environment, Managerial approaches and venue policies, Public Education
- *Venue Assessment checklist*
 - examine policies, practices, and environment within their establishment
 - recognize aspects that can be improved upon
 - reassess continually to track their progress and record improvements
- *Organizational Readiness Assessment*
 - understand whether venue staff at all levels are willing and able to implement a particular change
 - help inform venue's best next steps

Community-driven social marketing approach

- Convened Campaign Workgroup to adapt print campaign materials to the COVID context
- Created messaging relevant to this period
- Materials that could reach patrons at this time i.e. to-go packaging, inserts, stickers, coasters



How can you
reimagine nightlife
in your communities
for connection and
prevention?

Text Chat Question

Use the Text Chat feature to
answer the question.



Chat

From Me to **Everyone**:

Use this text chat box to respond to our questions, ask
your own, and connect with others!

To: **Everyone** ▼

Type message here...

Re-Imagining Nightlife, Connection, and Community



Sarah Samson
Project Coordinator,
Sexual Violence
Prevention Program,
The Retreat, Inc.
pronouns: she/her/hers



Michelle Henkhaus
Prevention Program
Coordinator,
New York Alliance
Against Sexual Assault
she/her/hers



Eric McGriff
Prevention Coordinator,
Crime Victims Treatment
Center
he/him/his



prevent
connect
A ValorUS PROJECT

PreventConnect.org

info@PreventConnect.org

PreventConnect.org/email – email group

Learn.PreventConnect.org – eLearning

Follow Us

twitter.com/PreventConnect

facebook.com/PreventConnect