

Welcome, this web conference will begin soon

# CONNECTING WITH COMMUNITY TO PREVENT SEXUAL & INTIMATE PARTNER VIOLENCE DURING CRISIS: LESSONS LEARNED FROM MINNESOTA

Tuesday November 16, 2021  
11 AM-12:30 PM PT/2 PM-3:30 PM ET



# Meet the PreventConnect Team



**Ashleigh Klein-Jimenez**  
Director of Prevention  
she/her/hers



**Tori VandeLinde**  
Project Manager  
she/her/hers



**Claudia Sibaja**  
Project Coordinator  
she/her/hers



**prevent  
connect**  
A ValorUS PROJECT

## **PreventConnect.org**

[info@PreventConnect.org](mailto:info@PreventConnect.org)

[PreventConnect.org/email](https://PreventConnect.org/email) – **email group**

[Learn.PreventConnect.org](https://Learn.PreventConnect.org) – **eLearning**

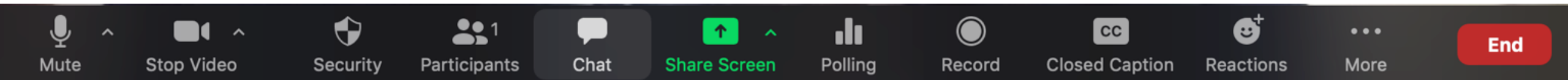
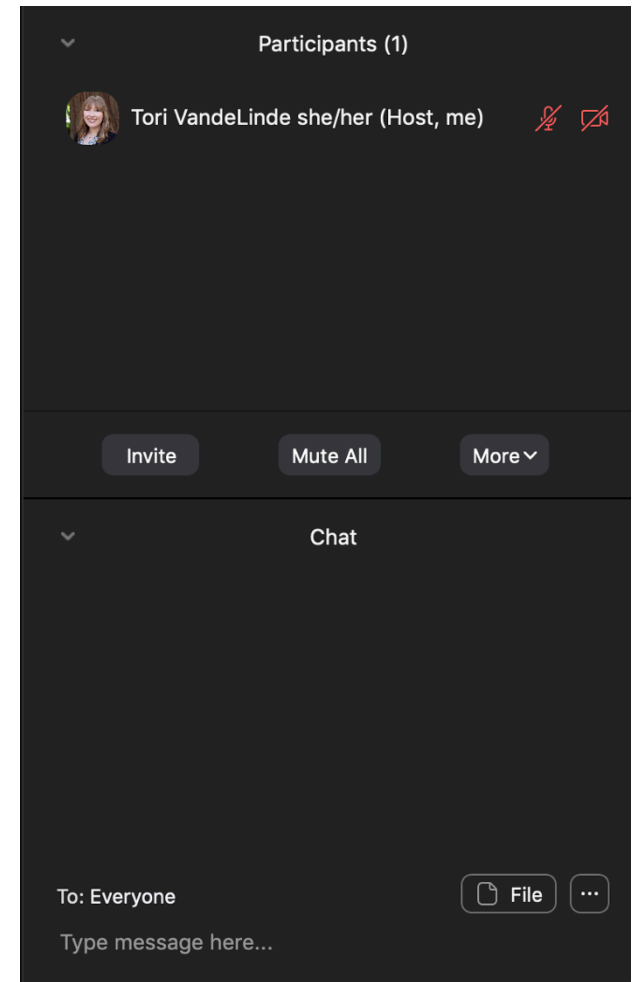
## **Follow Us**

[twitter.com/PreventConnect](https://twitter.com/PreventConnect)

[facebook.com/PreventConnect](https://facebook.com/PreventConnect)

# How to use Zoom + Housekeeping

- ▶ Text chat and private chat
  - ▶ Please send a private chat message for help.
- ▶ PowerPoint Slides
- ▶ Polling Questions
- ▶ Phone
- ▶ Closed Captioning
- ▶ Web Conference Guidelines



# PreventConnect

- ▶ Domestic violence/intimate partner violence
- ▶ Sexual violence
- ▶ Violence across the lifespan, including child sexual abuse
- ▶ Prevent before violence starts
- ▶ Connect to other forms of violence and oppression
- ▶ Connect to other prevention practitioners

# CONNECTING WITH COMMUNITY TO PREVENT SEXUAL & INTIMATE PARTNER VIOLENCE DURING CRISIS: LESSONS LEARNED FROM MINNESOTA

Tuesday November 16, 2021  
11 AM-12:30 PM PT/2 PM-3:30 PM ET



PreventConnect is a national project of ValorUS, formerly known as the California Coalition Against Sexual Assault sponsored by the U.S. Centers for Disease Control and Prevention. The views and information provided in this web conference do not necessarily represent the official views of the U.S. government, CDC or VALOR.

# Objectives

- ▶ Describe the impacts of community connectedness as protective factor against sexual and intimate partner violence
- ▶ Identify the impacts of community connectedness across the socioecological model and as it relates to addressing systemic harms and oppression
- ▶ Discuss opportunities for promoting community connectedness to prevent sexual and intimate partner violence, and for new or strengthened partnerships



# Community Connectedness





What does community  
connectedness look like  
in your own community?

Text Chat Question

Use the Text Chat feature to  
answer the question.



Chat

From Me to **Everyone**:

Use this text chat box to respond to our questions, ask  
your own, and connect with others!

To: **Everyone** ▼

Type message here...

# Meet Our Guests



**Noelle Volin**

We Are All Connected  
Project Director,  
Men As Peacemakers  
she/her/hers



**Pheng Thao**

Co-Executive Director,  
Transforming  
Generations  
he/him/his



**Catherine Diamond**

Supervisor of Evaluation  
and Economics Unit of  
Injury and Violence  
Prevention Section;  
Minnesota Department  
of Health  
she/her/hers

# Community-Identified Strategies:

Prevention During Times of Compounding Crises



TRANSFORMING  
GENERATIONS



MEN AS PEACEMAKERS



DEPARTMENT  
OF HEALTH

# Who We Are



TRANSFORMING  
GENERATIONS



MEN AS PEACEMAKERS



DEPARTMENT  
OF HEALTH





“I’ll say this, 2020 lifted up the rug of all the ugliness we’ve swept under the rug. And it just said, ‘You know what, no more rug. Have all your crap and then not only just have it, we’re going to place more crap on top of it.’ And it’s really forced organizations and funders to think about how do we do community work.”



TRANSFORMING  
GENERATIONS



MEN AS PEACEMAKERS

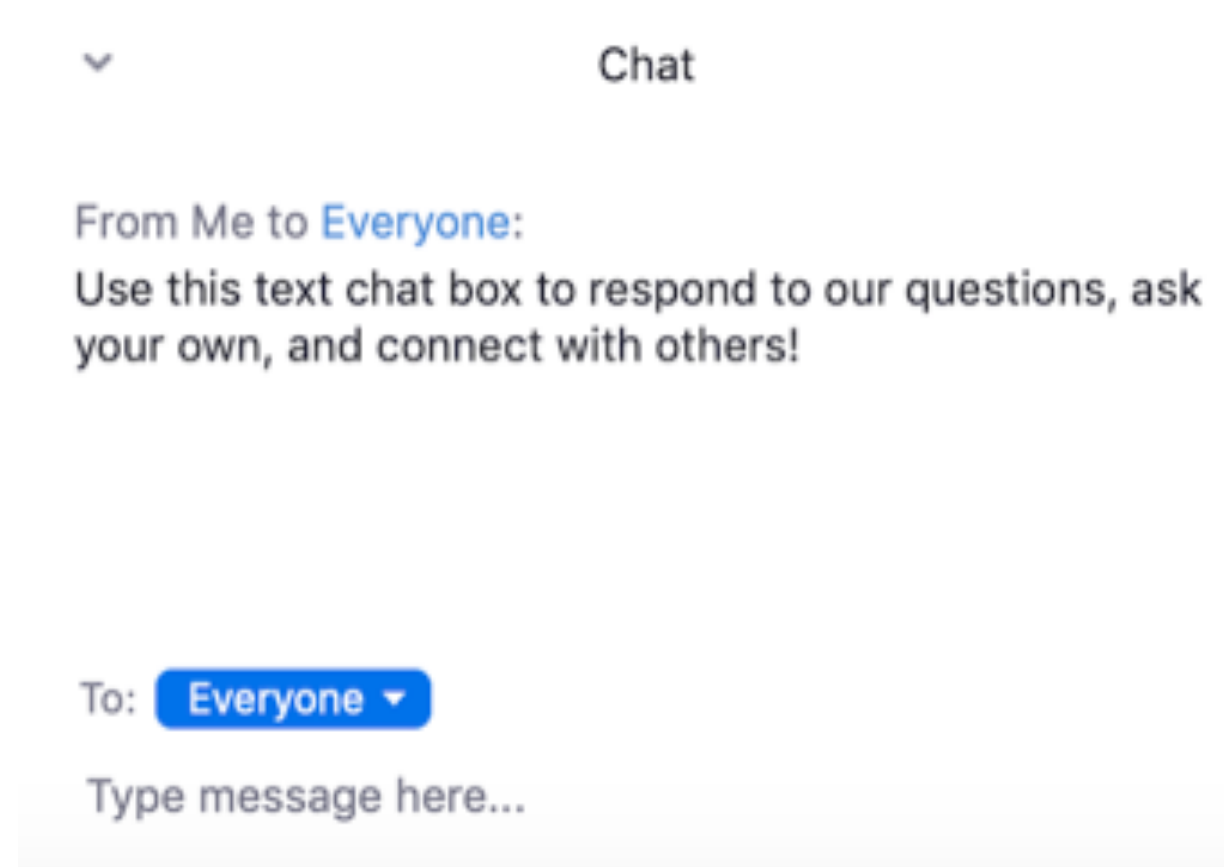


DEPARTMENT  
OF HEALTH

How has the COVID-19 pandemic forced your organization to take the rug away, like in the previous example?

### Text Chat Question

Use the Text Chat feature to answer the question.



▼ Chat

From Me to **Everyone**:

Use this text chat box to respond to our questions, ask your own, and connect with others!

To: **Everyone** ▼

Type message here...

# Strategy 1

Expand the understanding of and approach to "prevention" in order to achieve health equity.



TRANSFORMING  
GENERATIONS



MEN AS PEACEMAKERS

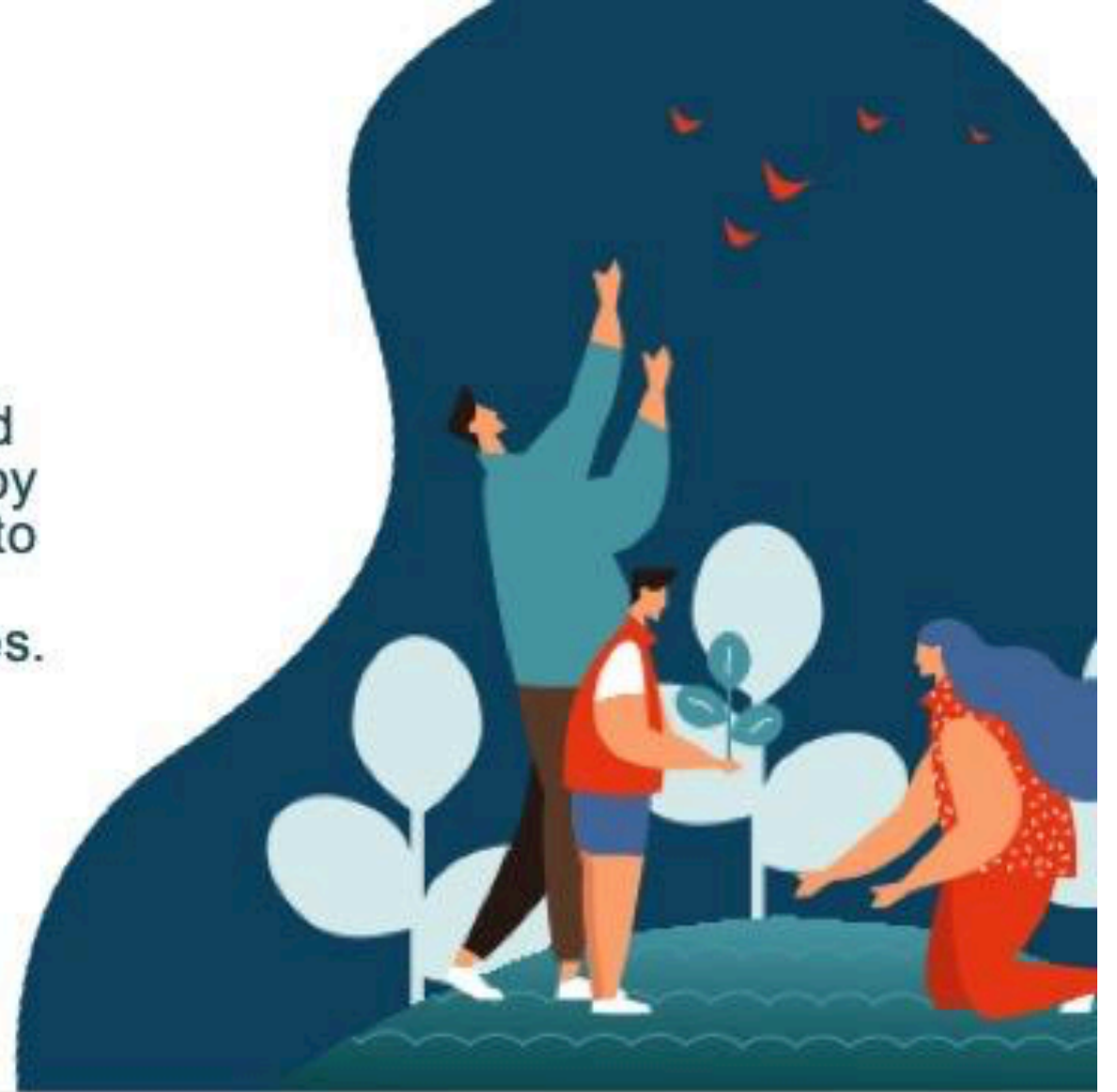


DEPARTMENT  
OF HEALTH



## Strategy 2

Center the voices, leadership, and expertise of those most impacted by the conditions that create barriers to health equity; address systemic conditions that propagate disparities.



TRANSFORMING  
GENERATIONS



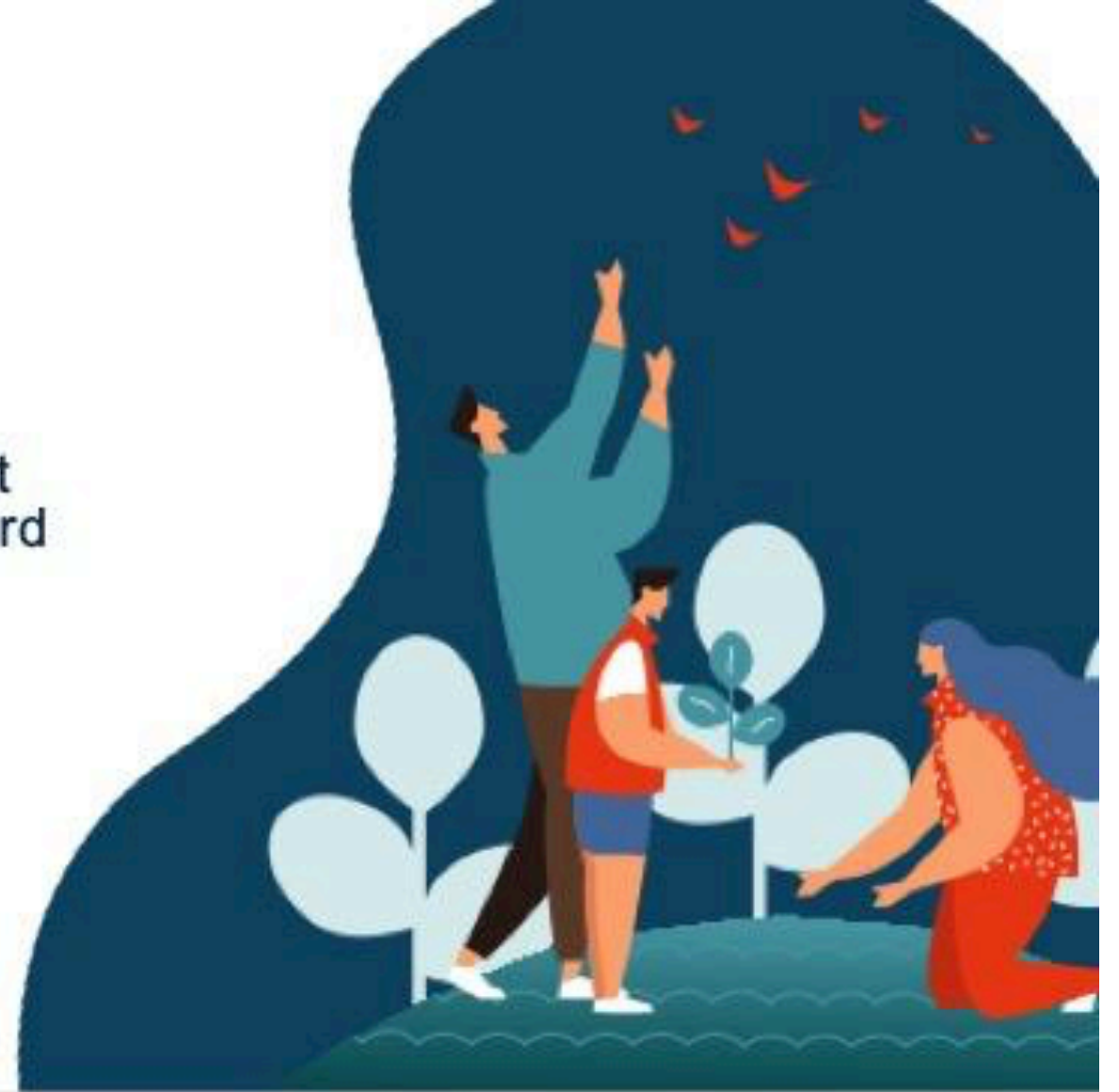
MEN AS PEACEMAKERS



DEPARTMENT  
OF HEALTH

## Strategy 3

Support, amplify, and invest in community-based organizations that meet community need and work toward health equity.



TRANSFORMING  
GENERATIONS



MEN AS PEACEMAKERS



DEPARTMENT  
OF HEALTH

What does it look like to meet community need and work toward health equity (during times of crisis/instability)?

## Text Chat Question

Use the Text Chat feature to answer the question.



Chat

From Me to **Everyone**:

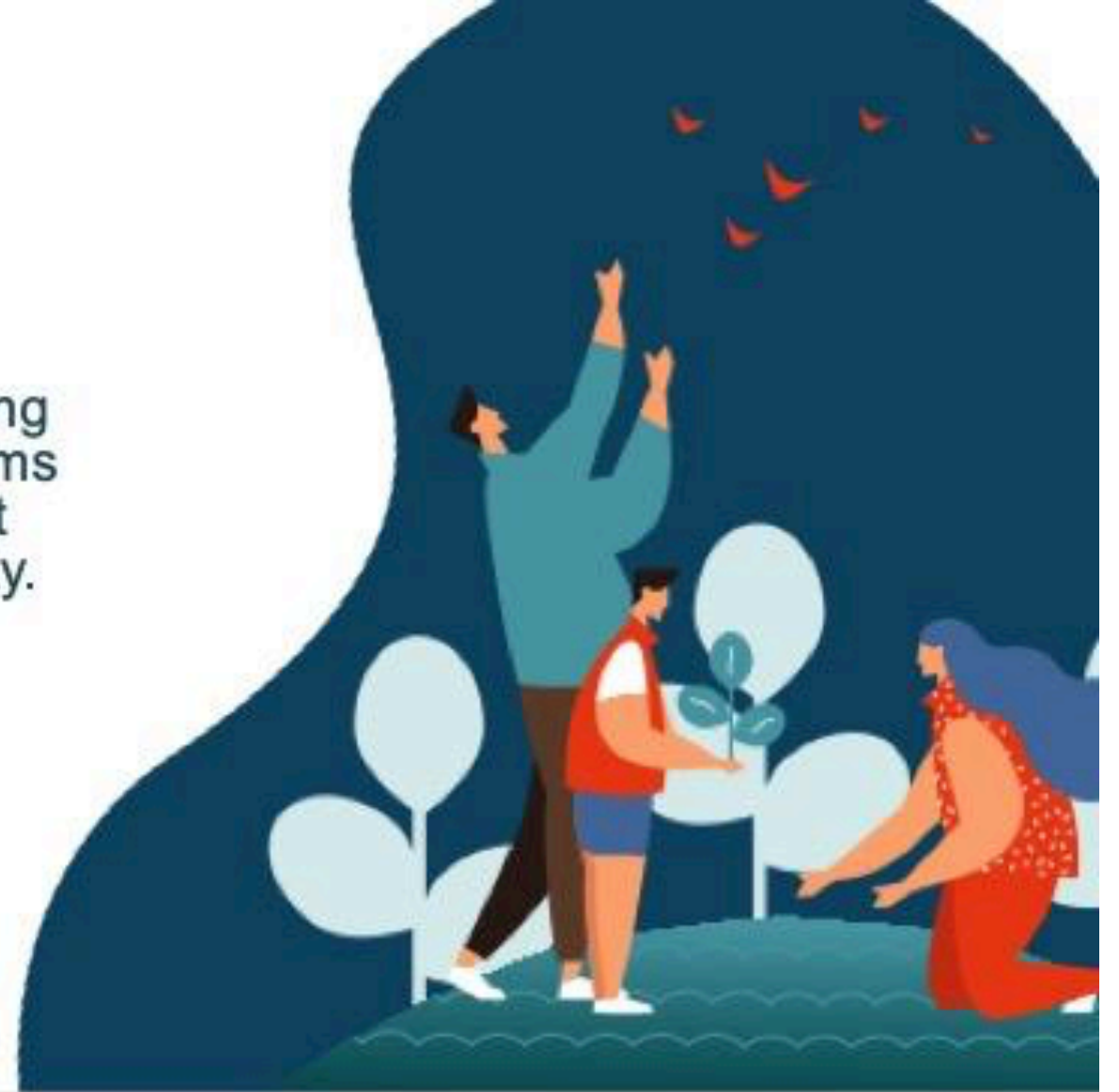
Use this text chat box to respond to our questions, ask your own, and connect with others!

To: **Everyone** ▼

Type message here...

## Strategy 4

“Pause and pivot” to ensure any adaptations to prevention programming actually meet community need; systems partners need to create and support infrastructures that allow this flexibility.



TRANSFORMING  
GENERATIONS



MEN AS PEACEMAKERS



DEPARTMENT  
OF HEALTH



# Strategy 5

Adopt community-connectedness as the foundation of prevention.



TRANSFORMING  
GENERATIONS



MEN AS PEACEMAKERS



DEPARTMENT  
OF HEALTH

Which of the 5 Strategies resonates with you the most? How do you see this strategy being implemented in your organization?

Text Chat Question

1. Expand the understanding of and approach to "prevention" in order to achieve health equity.
2. Center the voices, leadership, and expertise of those most impacted by the conditions that create barriers to health equity; address systemic conditions that propagate disparities.
3. Support, amplify, and invest in community-based organizations that meet community need and work toward health equity.
4. "Pause and pivot" to ensure any adaptations to prevention programming actually meet community need; systems partners need to create and support infrastructures that allow this flexibility.
5. Adopt community-connectedness as the foundation of prevention.

# Community Narrative + Prevention Toolkit: <https://www.menaspeacemakers.org/mdhreport>



TRANSFORMING GENERATIONS



**MEN AS PEACEMAKERS**



**DEPARTMENT OF HEALTH**



## Connect with Us!

Pheng Thao, Co-Executive Director, Transforming Generations

[phengt@transforminggenerations.org](mailto:phengt@transforminggenerations.org)

Noelle Volin, Men As Peacemakers

[noelle@menaspeacemakers.org](mailto:noelle@menaspeacemakers.org)

Catherine Diamond, Minnesota Department of Health

[catherine.diamond@state.mn.us](mailto:catherine.diamond@state.mn.us)



TRANSFORMING  
GENERATIONS



MEN AS PEACEMAKERS



DEPARTMENT  
OF HEALTH

# Q&A



## **Noelle Volin**

We Are All Connected  
Project Director,  
Men As Peacemakers  
she/her/hers



## **Pheng Thao**

Co-Executive Director,  
Transforming  
Generations  
he/him/his



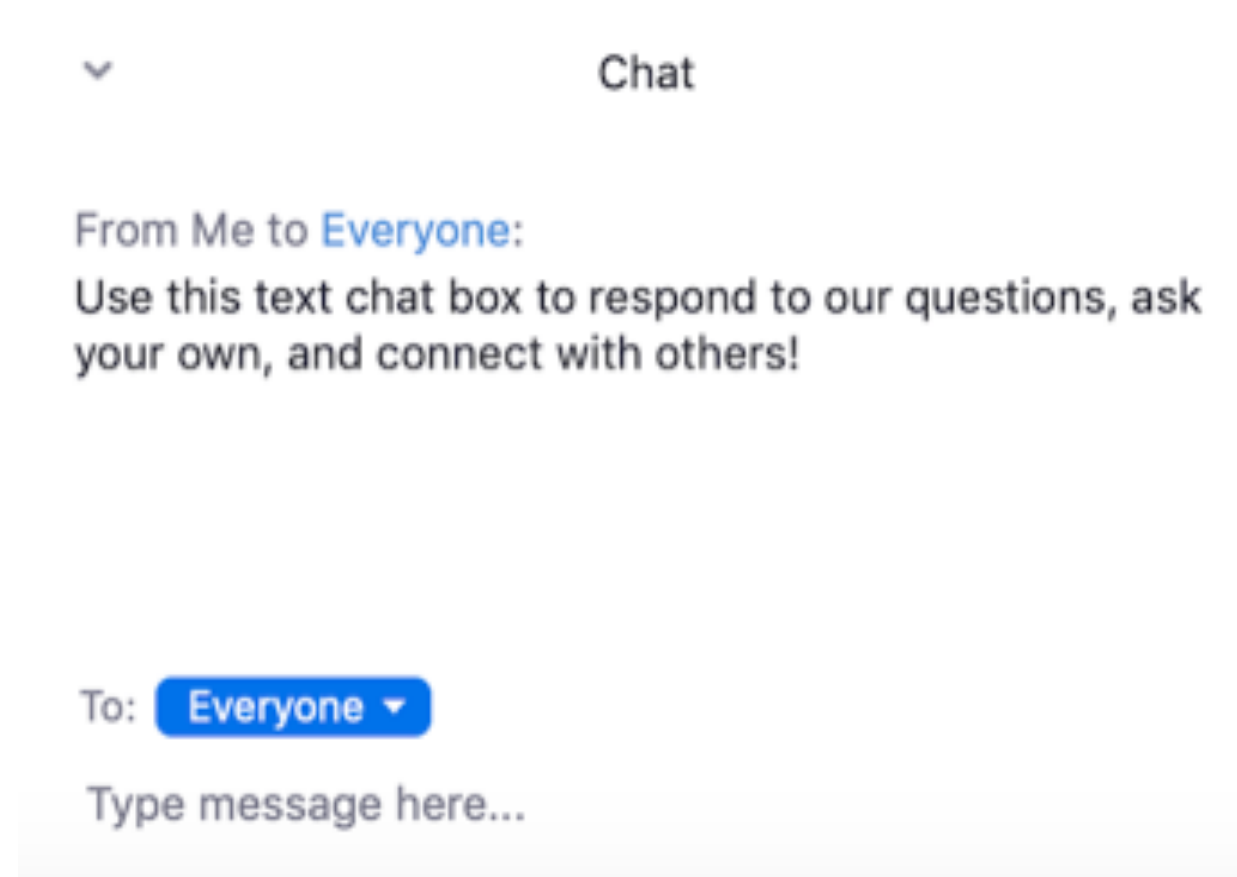
## **Catherine Diamond**

Supervisor of Evaluation  
and Economics Unit of  
Injury and Violence  
Prevention Section;  
Minnesota Department  
of Health  
she/her/hers

What can you do this week to support community connectedness as a sexual and intimate partner violence prevention strategy?

Text Chat Question

Use the Text Chat feature to answer the question.



▼ Chat

From Me to **Everyone**:

Use this text chat box to respond to our questions, ask your own, and connect with others!

To: **Everyone** ▼

Type message here...



prevent  
connect  
A ValorUS PROJECT

[PreventConnect.org](https://PreventConnect.org)

[info@PreventConnect.org](mailto:info@PreventConnect.org)

[PreventConnect.org/email](https://PreventConnect.org/email) – email group

[Learn.PreventConnect.org](https://Learn.PreventConnect.org) – eLearning

### Follow Us

[twitter.com/PreventConnect](https://twitter.com/PreventConnect)

[facebook.com/PreventConnect](https://facebook.com/PreventConnect)