

Welcome, this web conference will begin soon

COMMUNITY ENGAGEMENT FOR PREVENTION PART 2

AUTHENTICITY IN PRACTICE

Monday, May 23, 2022
11 AM-12:30 PM PT/2 PM-3:30 PM ET



**prevent
connect**
A ValorUS[®] PROJECT



Meet the PreventConnect Team



Ashleigh Klein-Jimenez

Director of Prevention
she/her/hers



Janae Sargent

Project Coordinator
she/they



prevent
connect

PreventConnect.org

info@PreventConnect.org

PreventConnect.org/email – email group

Learn.PreventConnect.org – eLearning

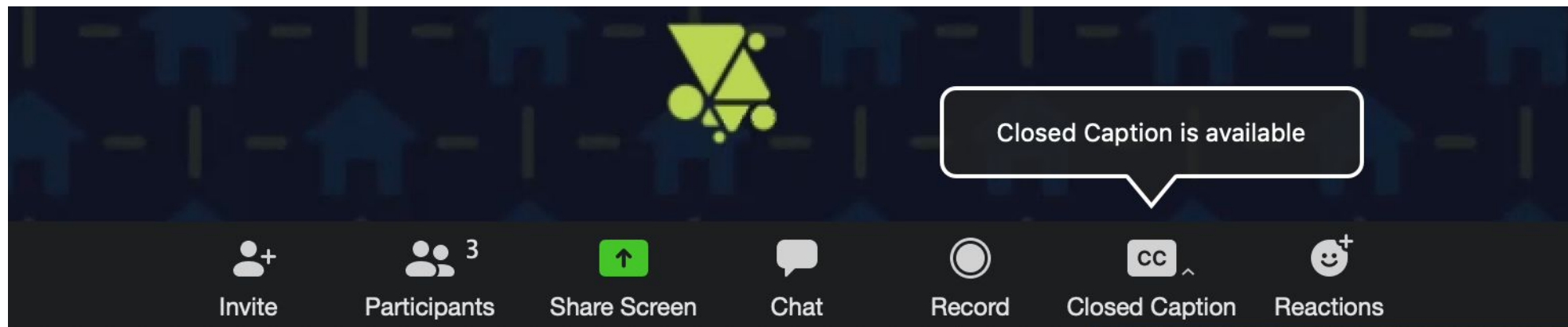
Follow Us

twitter.com/PreventConnect

facebook.com/PreventConnect

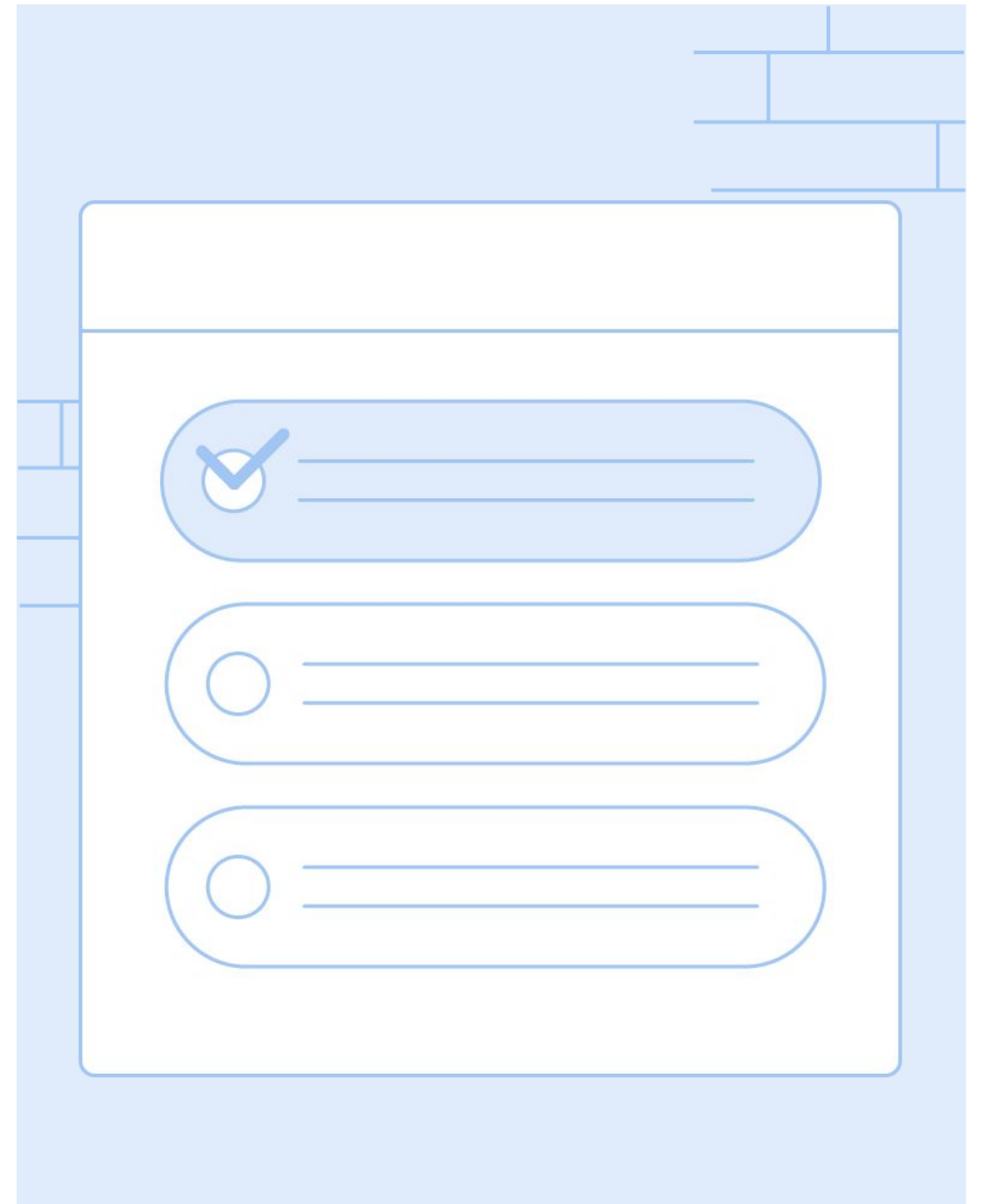
How to use Zoom

- ▶ Text chat
- ▶ PowerPoint Slides
- ▶ Polling Questions
- ▶ Phone
- ▶ Closed Captioning
- ▶ Web Conference Guidelines



Did you attend or
watch a recording of
part 1 in this web
conference series

Polling Question



The diagram illustrates a polling interface. It features a white rectangular area with rounded corners, set against a light blue background with a faint grid pattern. At the top of the white area is a white header bar. Below the header, there are three vertically stacked, rounded rectangular buttons. Each button contains a radio button on the left and two horizontal lines on the right, representing text options. The top button's radio button is filled with a blue checkmark, indicating it is the selected option. The middle and bottom buttons have empty radio buttons.

PreventConnect

- ▶ Domestic violence/intimate partner violence
- ▶ Sexual violence
- ▶ Violence across the lifespan, including child sexual abuse
- ▶ Prevent before violence starts
- ▶ Connect to other forms of violence and oppression
- ▶ Connect to other prevention practitioners

COMMUNITY ENGAGEMENT FOR PREVENTION PART 2

AUTHENTICITY IN PRACTICE

Monday, May 23, 2022
11 AM-12:30 PM PT/2 PM-3:30 PM ET



PreventConnect is a national project of ValorUS sponsored by the U.S. Centers for Disease Control and Prevention. The views and information provided in this web conference do not necessarily represent the official views of the U.S. government, CDC or VALOR.

Objectives

- ▶ Describe how shared leadership models can be utilized within public health departments to engage communities and advance health equity
- ▶ Identify opportunities to collaborate and share power with communities to achieve project outcomes
- ▶ Strengthen implementation skills within shared-leadership models of sexual and intimate partner violence prevention

Meet our Guests



Wil DuBose

Prevention Manager
New Jersey Coalition to
End Domestic Violence



Carter Patterson

Community Liaison
Director of Programs, The
Father Center of New
Jersey



Tim Gregory

Community Liaison
Founder, The Huddle

Community Engagement Series

COMMUNITY ENGAGEMENT FOR PREVENTION

WEB CONFERENCE SERIES OPEN TO
RPE RECIPIENTS AND SUBRECIPIENTS AND
DELTA IMPACT RECIPIENTS AND SUBRECIPIENTS

Part 1 | Monday, May 16, 2022

Part 2 | Monday, May 23, 2022



Community Engagement Series Part 1 Key Themes

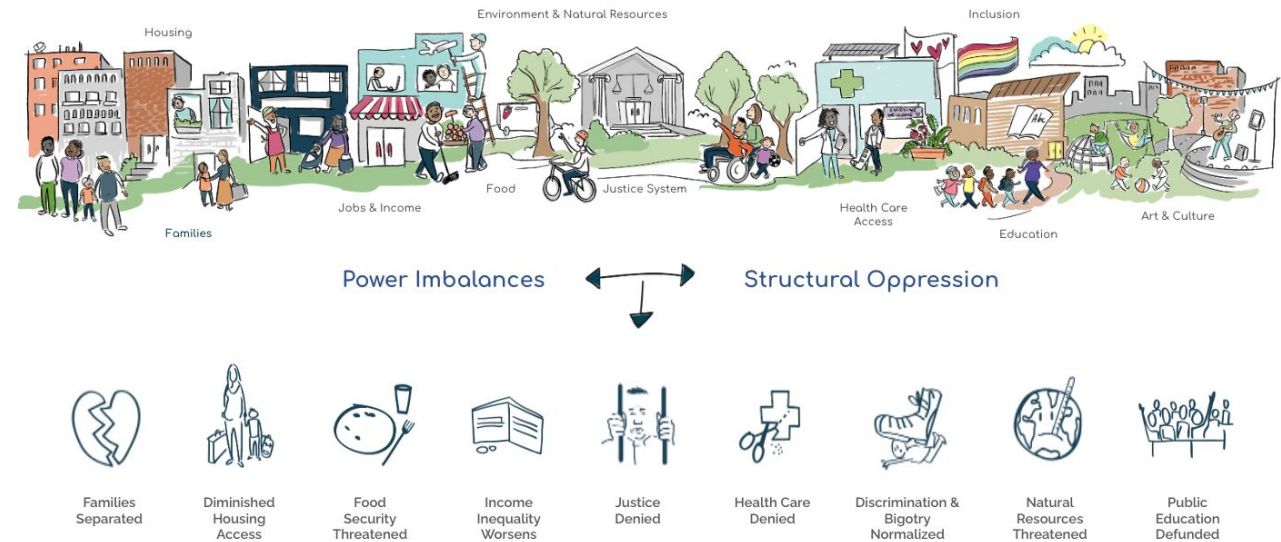
- ▶ Understanding and confronting power is central to Community Engagement
 - ▶ Internal and external structural power inequities
 - ▶ Power sharing

“ Power is the ability to achieve a purpose. Whether or not it is **good** or **bad** depends on the purpose. ”

Dr. Martin Luther King, Jr.

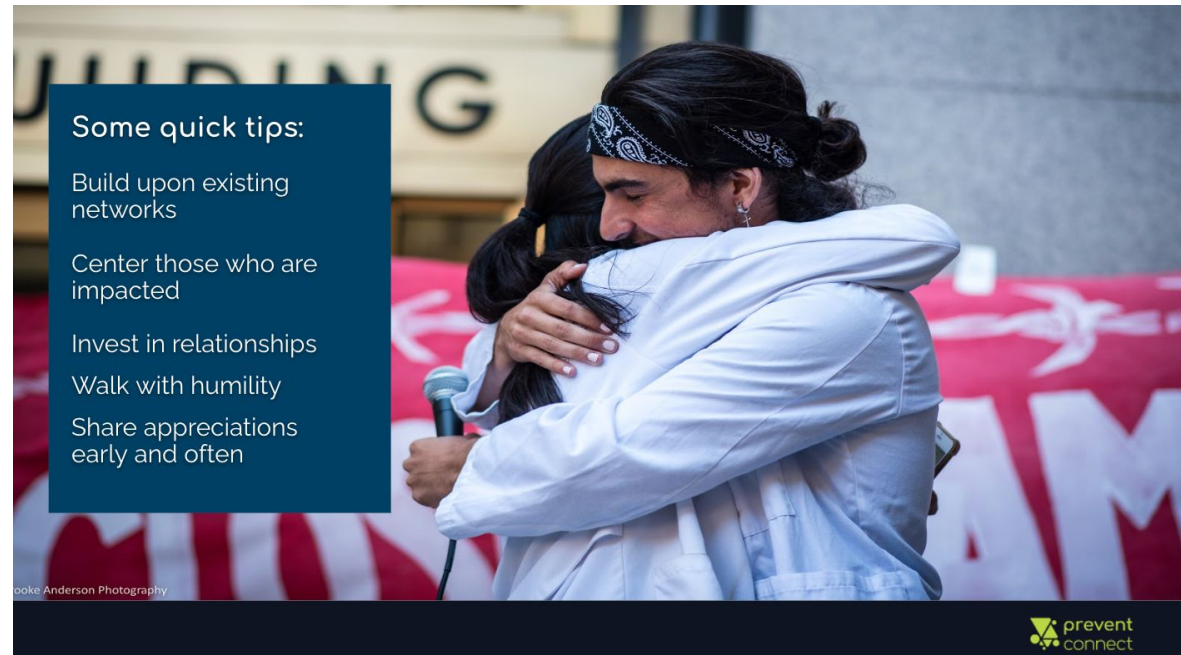
Community Engagement Series Part 1 Key Themes

- ▶ No “one-size-fits-all” approach to authentic Community Engagement
- ▶ Community members must be involved at every level
 - ▶ Program design
 - ▶ Implementation
 - ▶ Evaluation



Community Engagement Series Part 1 Key Themes

- ▶ Requires framework shift
 - ▶ Emphasis on *listening* and *collaborating*
 - ▶ Honesty and trust building



How are you assessing community engagement?



<https://movementstrategy.org/wp-content/uploads/2021/08/The-Spectrum-of-Community-Engagement-to-Ownership.pdf>

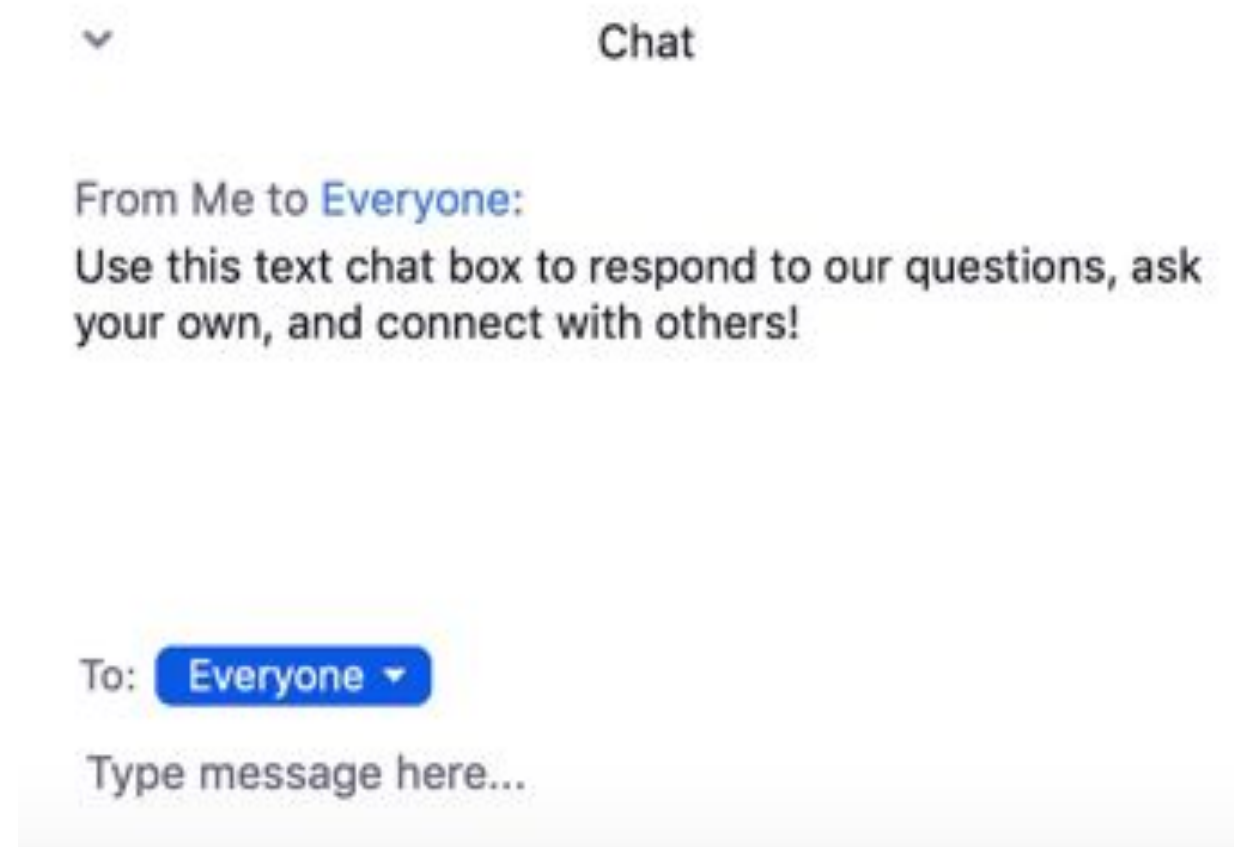
<i>Outreach</i>	<i>Consult</i>	<i>Involve</i>	<i>Collaborate</i>
<p><i>Some Community Involvement</i></p> <p><i>Communication flows from one to the other, to inform</i></p> <p>Provides community with information.</p> <p>Entities coexist.</p> <p>Outcomes: Optimally, establishes communication channels and channels for outreach.</p>	<p><i>More Community Involvement</i></p> <p><i>Communication flows to the community and then back, answer seeking</i></p> <p>Gets information or feedback from the community.</p> <p>Entities share information.</p> <p>Outcomes: Develops connections.</p>	<p><i>Better Community Involvement</i></p> <p><i>Communication flows both ways, participatory form of communication</i></p> <p>Involves more participation with community on issues.</p> <p>Entities cooperate with each other.</p> <p>Outcomes: Visibility of partnership established with increased cooperation.</p>	<p><i>Community Involvement</i></p> <p><i>Communication flow is bidirectional</i></p> <p>Forms partnerships with community on each aspect of project from development to solution.</p> <p>Entities form bidirectional communication channels.</p> <p>Outcomes: Partnership building, trust building.</p>

Reference: Modified by the authors from the International Association for Public Participation.

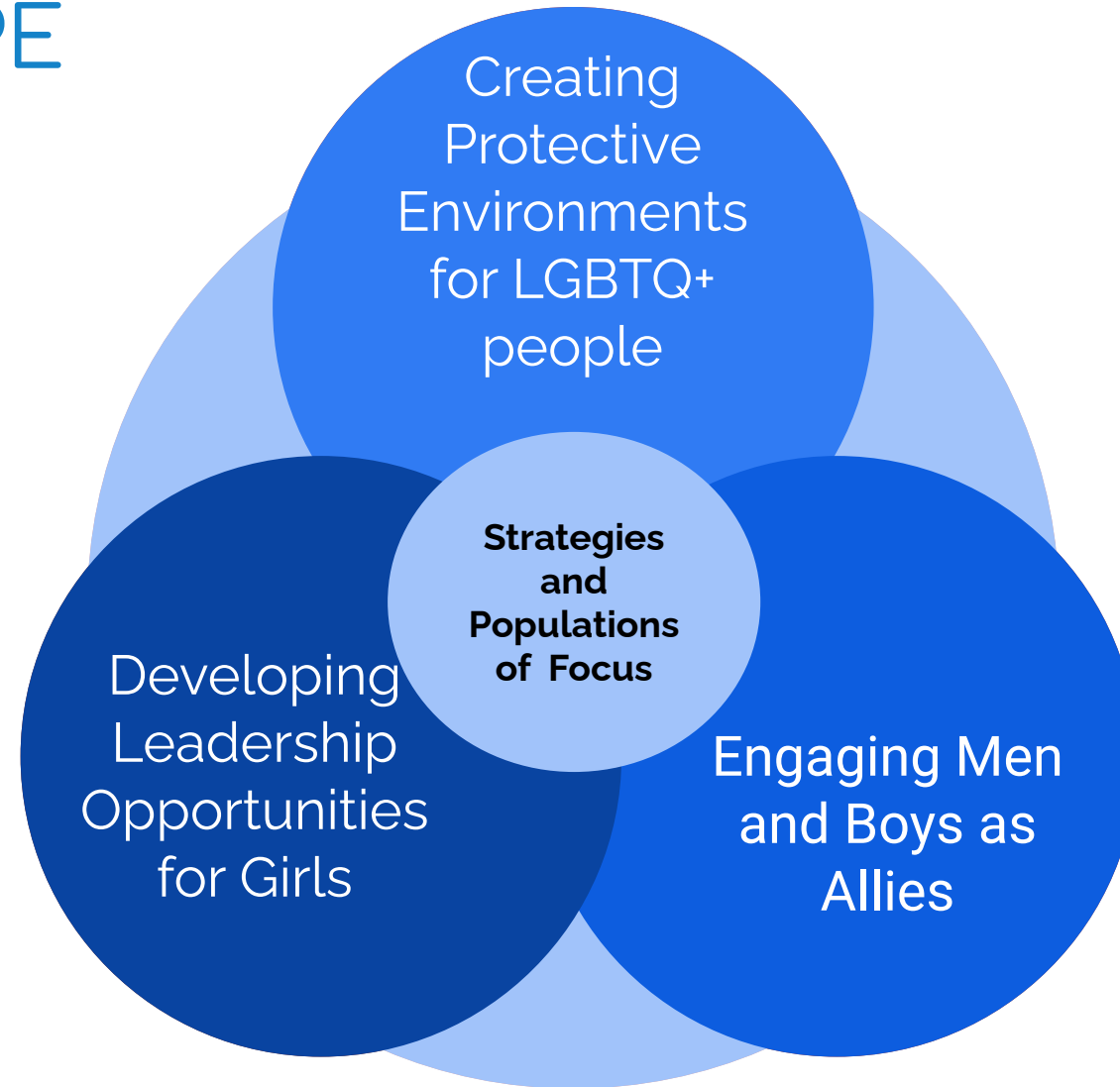
https://www.atsdr.cdc.gov/communityengagement/pdf/PCE_Report_5_08_FINAL.pdf

What challenges or barriers have come up when you have tried to take on Community Engagement work?

Text Chat Question



New Jersey RPE



Panel Discussion



Wil DuBose

Prevention Manager
New Jersey Coalition to
End Domestic Violence



Carter Patterson

Director of Programs
The Father Center of New
Jersey



Tim Gregory

NJCDV Community Liaison
Executive Director, The Huddle

What is one
commitment you
want to make toward
incorporating
authentic
Community
Engagement in your
work?

Text Chat Question

▼ Chat

From Me to **Everyone**:

Use this text chat box to respond to our questions, ask your own, and connect with others!

To: **Everyone** ▼

Type message here...

NJ MEN
OF COURAGE



NJCEDV
New Jersey Coalition to
End Domestic Violence

<https://njcedv.org/>

<https://www.nj.gov/dcf/women/>

info@njcedv.org

wdubose@njcedv.org

Danielle.Scott@dcf.nj.gov



prevent
connect

PreventConnect.org

info@PreventConnect.org

PreventConnect.org/email – email group

Learn.PreventConnect.org – eLearning

Follow Us

twitter.com/PreventConnect

facebook.com/PreventConnect