

# Integrating Health Equity into Sexual and Domestic Violence Prevention: Key Concepts and Components of Strategies and Approaches



---

Monday, September 25 , 2023  
11:00 AM PT/2:00 PM ET



prevent  
connect  
A ValorUS<sup>®</sup> PROJECT

# Meet the PreventConnect Team



**Ashleigh Klein-Jimenez**

Director of Prevention

she/her/hers



**Janae Sargent**

Project Coordinator

she/they



prevent  
connect

## **PreventConnect.org**

[info@PreventConnect.org](mailto:info@PreventConnect.org)

[PreventConnect.org/email](https://PreventConnect.org/email) – email group

[Learn.PreventConnect.org](https://Learn.PreventConnect.org) – eLearning

## **Follow Us**

[instagram.com/PreventConnect](https://instagram.com/PreventConnect)

[linkedin.com/company/preventconnect](https://linkedin.com/company/preventconnect)

[threads/preventconnect](https://threads/preventconnect)

[twitter.com/PreventConnect](https://twitter.com/PreventConnect)

[facebook.com/PreventConnect](https://facebook.com/PreventConnect)

Listen to our podcast!

The Grooming Myth

Fighting Anti-LGBTQ+ Rhetoric

prevent connect  
A VIDEAUS PROJECT

CONNECTICUT ALLIANCE  
TO END SEXUAL VIOLENCE  
Support. Advocate. Thrive.

Available on Spotify

Available on YouTube

The image is a podcast cover with a light blue background on the left and a colorful, stylized illustration of three people's profiles on the right. The illustration uses a palette of red, orange, yellow, green, and blue. The text is in a clean, sans-serif font. Logos for 'prevent connect', 'CONNECTICUT ALLIANCE TO END SEXUAL VIOLENCE', and streaming platforms Spotify and YouTube are included.



# Health Equity in Practice

Foundations for Sexual Violence Prevention Pt. 5

How to build cross-  
movement  
partnerships to  
advance Health Equity

September 26 | 11 a.m. PST / 2 p.m. EST

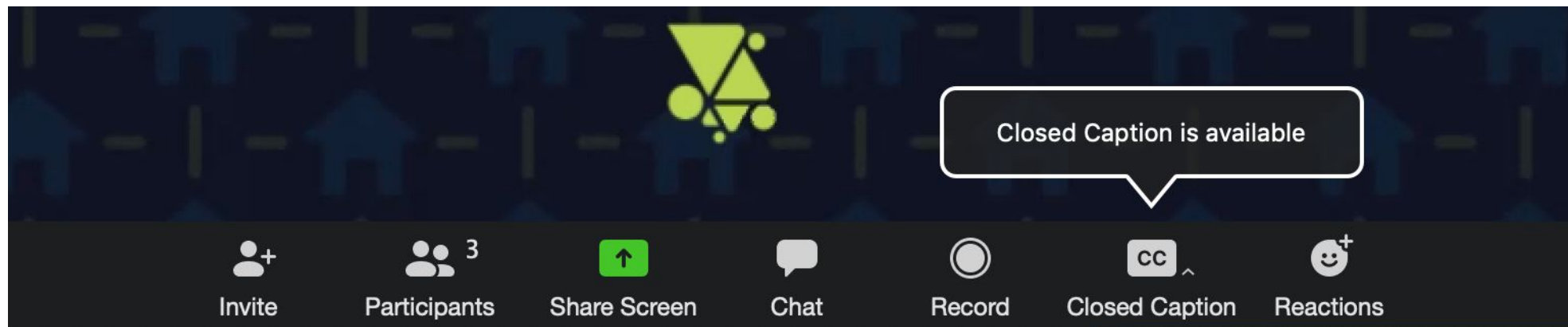


**nsvrc**

National Sexual Violence  
Resource Center

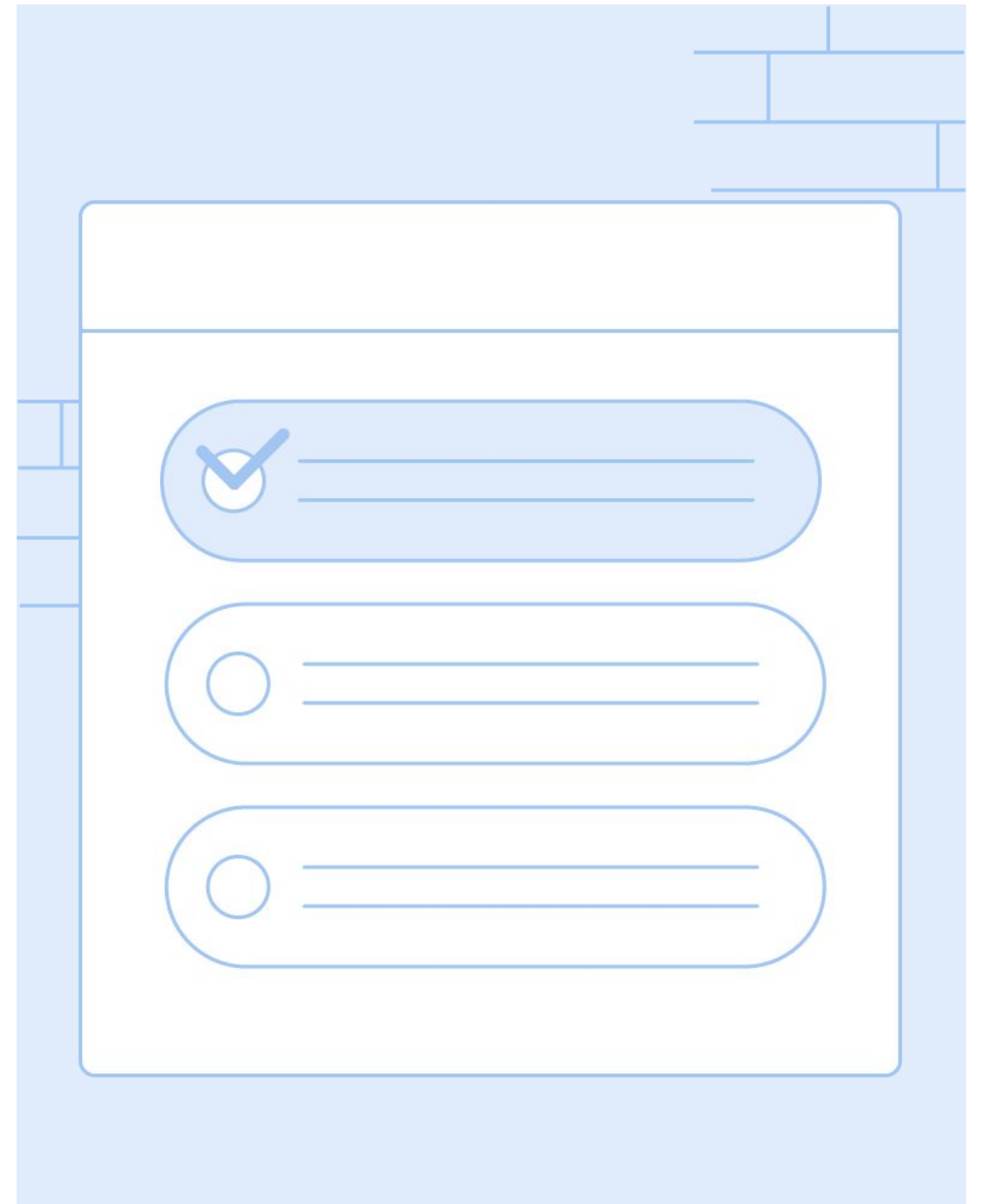
# How to use Zoom

- ▶ Text chat
- ▶ PowerPoint Slides
- ▶ Polling Questions
- ▶ Phone
- ▶ Closed Captioning
- ▶ Web Conference Guidelines



Have you attended a  
PreventConnect Web  
Conference before?

Polling Question



The diagram illustrates a polling question interface. It features a white rectangular box with rounded corners, set against a light blue background with a faint grid pattern. The box contains three vertically stacked radio button options. Each option consists of a circular radio button on the left and two horizontal lines representing text on the right. The top option is highlighted with a light blue background and contains a blue checkmark inside the radio button. The middle and bottom options have white backgrounds and empty radio buttons.

# PreventConnect

- ▶ Domestic violence/intimate partner violence
- ▶ Sexual violence
- ▶ Violence across the lifespan, including child sexual abuse
- ▶ Prevent before violence starts
- ▶ Connect to other forms of violence and oppression
- ▶ Connect to other prevention practitioners



# Integrating Health Equity into Sexual and Domestic Violence Prevention: Key Concepts and Components of Strategies and Approaches



---

Monday, September 25 , 2023  
11:00 AM PT/2:00 PM ET



PreventConnect is a national project of ValorUS sponsored by the U.S. Centers for Disease Control and Prevention. The views and information provided in this web conference do not necessarily represent the official views of the U.S. government, CDC or VALOR.

# Objectives

- Gain a deeper understanding of addressing health equity through violence prevention
- Translate concepts of health equity into on-the-ground program development and implementation
- Identify cross-cutting strategies and partnerships to address social determinants of health and prevent violence in local communities

# HEALTH EQUITY APPROACHES TO PREVENTING SEXUAL AND INTIMATE PARTNER VIOLENCE: A 3-PART SERIES





# Health Equity in Practice

## Foundations for Sexual Violence Prevention

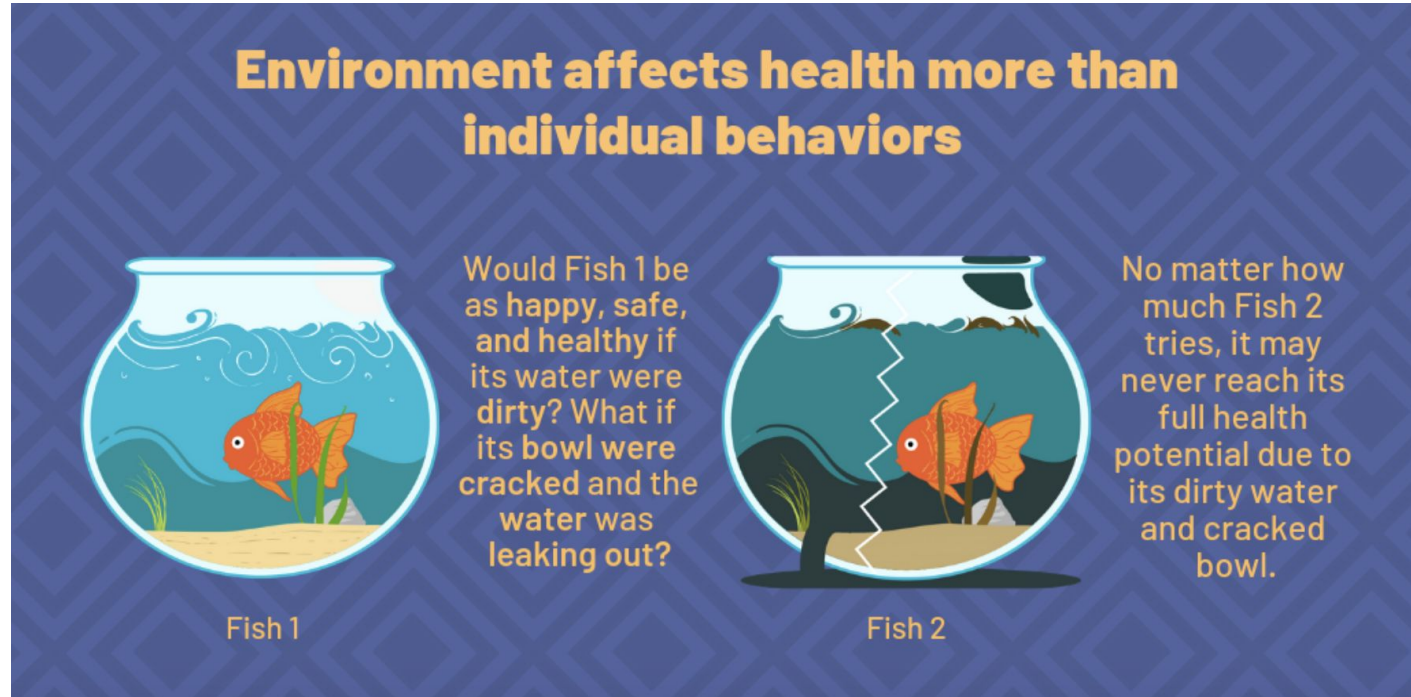
A 5-Part Web Conference Series



<https://www.preventconnect.org/2023/07/health-equity-in-practice-session-1-how-social-justice-issues-connect-to-sexual-violence-prevention/>



Health equity means that “everyone has a fair and just opportunity to attain their highest level of health.”



<https://nam.edu/programs/culture-of-health/young-leaders-visualize-health-equity/what-are-the-social-determinants-of-health/>

<https://www.cdc.gov/healthequity/whatis/index.html>



# Health Equity requires:

- Addressing historical and current injustices
- Overcoming economic, social, & other obstacles to health
- Eliminating preventable disparities

a.

<https://www.cdc.gov/healthequity/whatis/index.html>

# A Health Equity Approach to Violence Prevention



**Create accessible access to power**



To improve the structural and social conditions where people live, learn, work, play, etc.



To eliminate sexual and intimate partner violence in communities

There is no one way to  
increase health equity.

# One place to start is examining your strategy or approach...

- ▶ Does it prioritize the people with the most burden and need?
- ▶ Does it address the conditions where people live, learn, work, and play?
- ▶ Does it create a new narrative about violence prevention?
- ▶ Does it involve sustainable community solutions?

How does your  
prevention  
approach/strategy  
prioritize those with  
the most burden and  
need?

Text Chat Question

▼ Chat

From Me to **Everyone**:

Use this text chat box to respond to our questions, ask your own, and connect with others!

To: **Everyone** ▼

Type message here...



# Meet Today's Guest Speakers



**Belinda Flores**

(she/her/hers)

**Kansas Department of  
Health & Environment**



**Christina Holt**

(she/her/hers)

**University of Kansas Center  
for Community Health &  
Development**



**Gabby Boyle**

(they/them)

**Sexual Trauma and Abuse  
Care Center**



The Sexual Trauma & Abuse  
**CARE CENTER**





# University of Kansas Center for Community Health and Development

Supporting community health and development through...

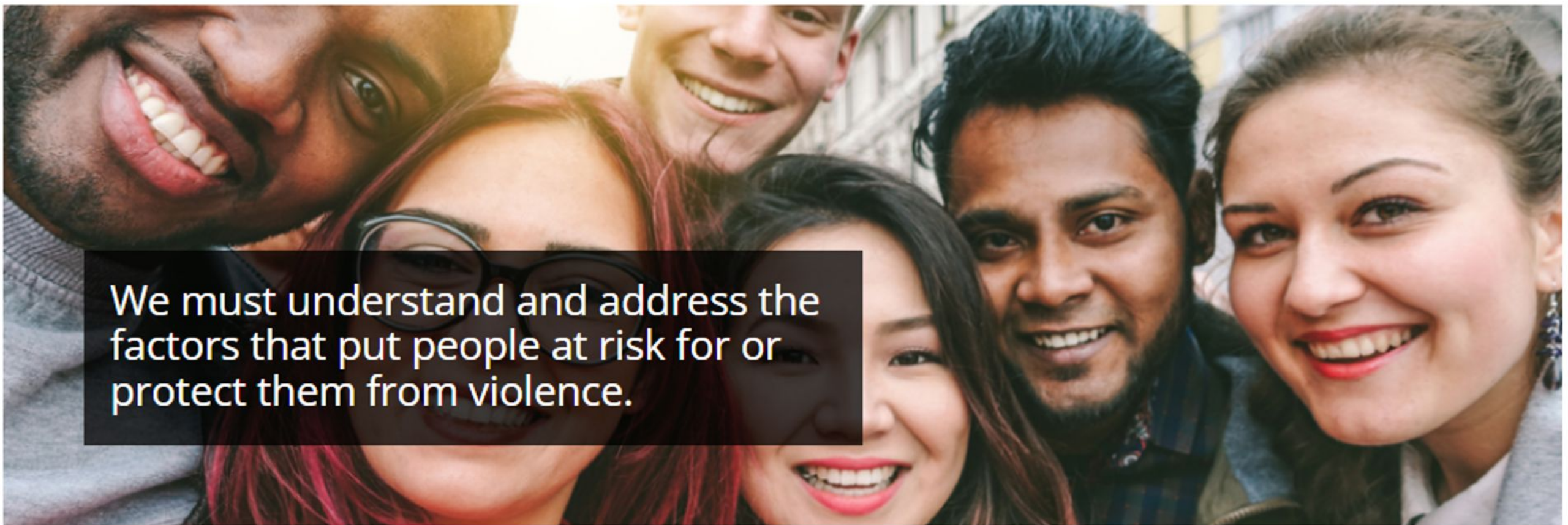
- ▶ participatory **research and evaluation**
- ▶ **teaching and training**
- ▶ technical support and **capacity building**



# Kansas Department of Health and Environment

The Kansas Department of Health and Environment works to protect and improve the health and environment of all Kansans.





We must understand and address the factors that put people at risk for or protect them from violence.

*Source: U.S. Centers for Disease Control and Prevention, 2023*



# Risk Factors for Sexual Violence Perpetration

## Community

- Poverty
- Lack of employment opportunities
- Lack of institutional support from police and judicial system
- General tolerance of sexual violence within the community
- Weak community sanctions against sexual violence perpetrators

## Societal

- Societal norms that support sexual violence
- Societal norms that support male superiority and sexual entitlement
- Societal norms that maintain women's inferiority and sexual submissiveness
- Weak laws and policies related to sexual violence and gender equity
- High levels of crime and other forms of violence

*Source: U.S. Centers for Disease Control and Prevention, 2023*

# Moving Upstream

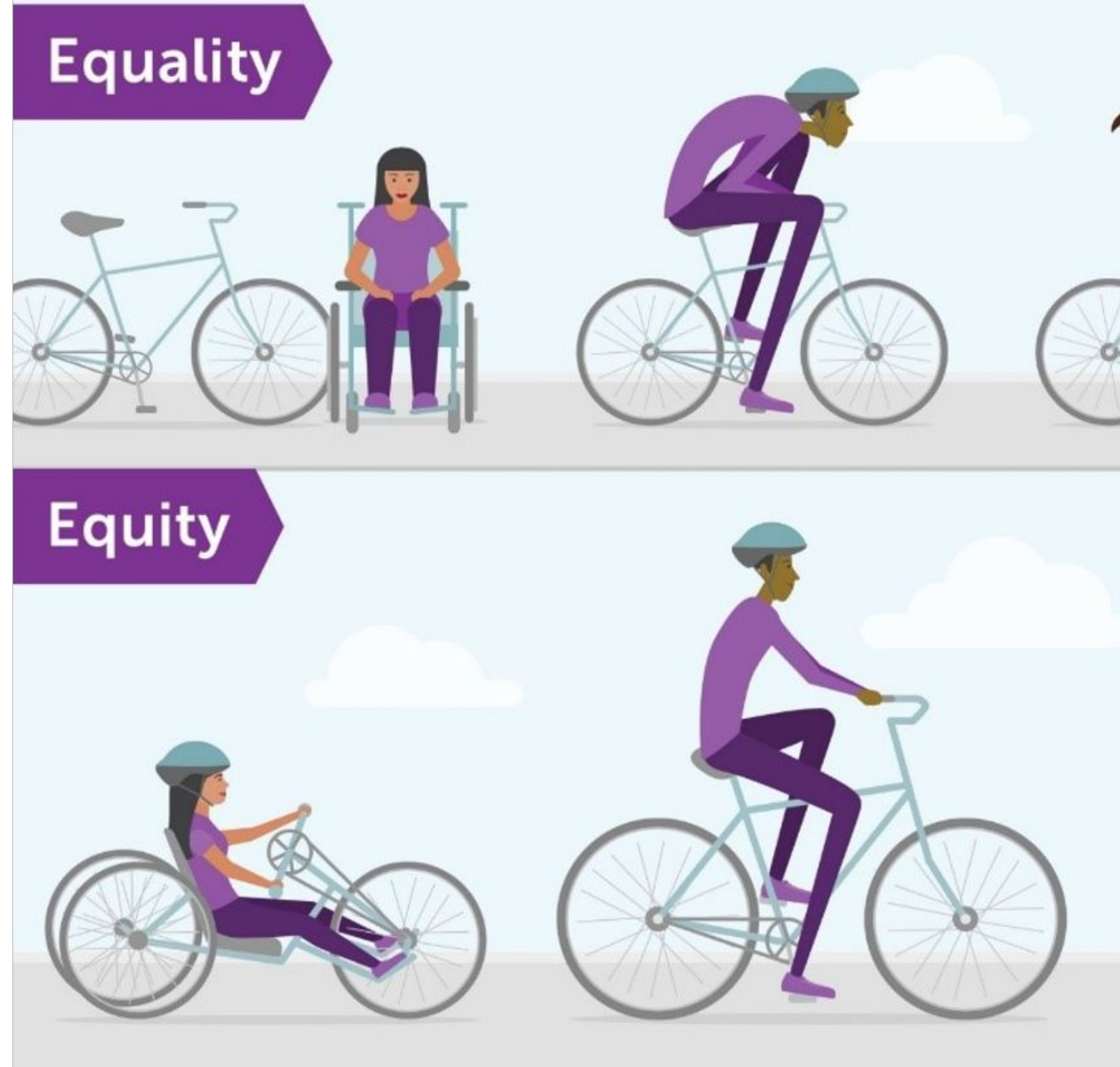


**Health equity for all:** A fair and just opportunity to be as healthy as possible for everyone.

That health inequities are **conditions that are produced by the social, political, and economic factors** at play in societal structures.

Health equity is **an ethical and human rights principle**

**Equal distribution may not eliminate disparities.**



# Social Determinants of Health



Social Determinants of Health

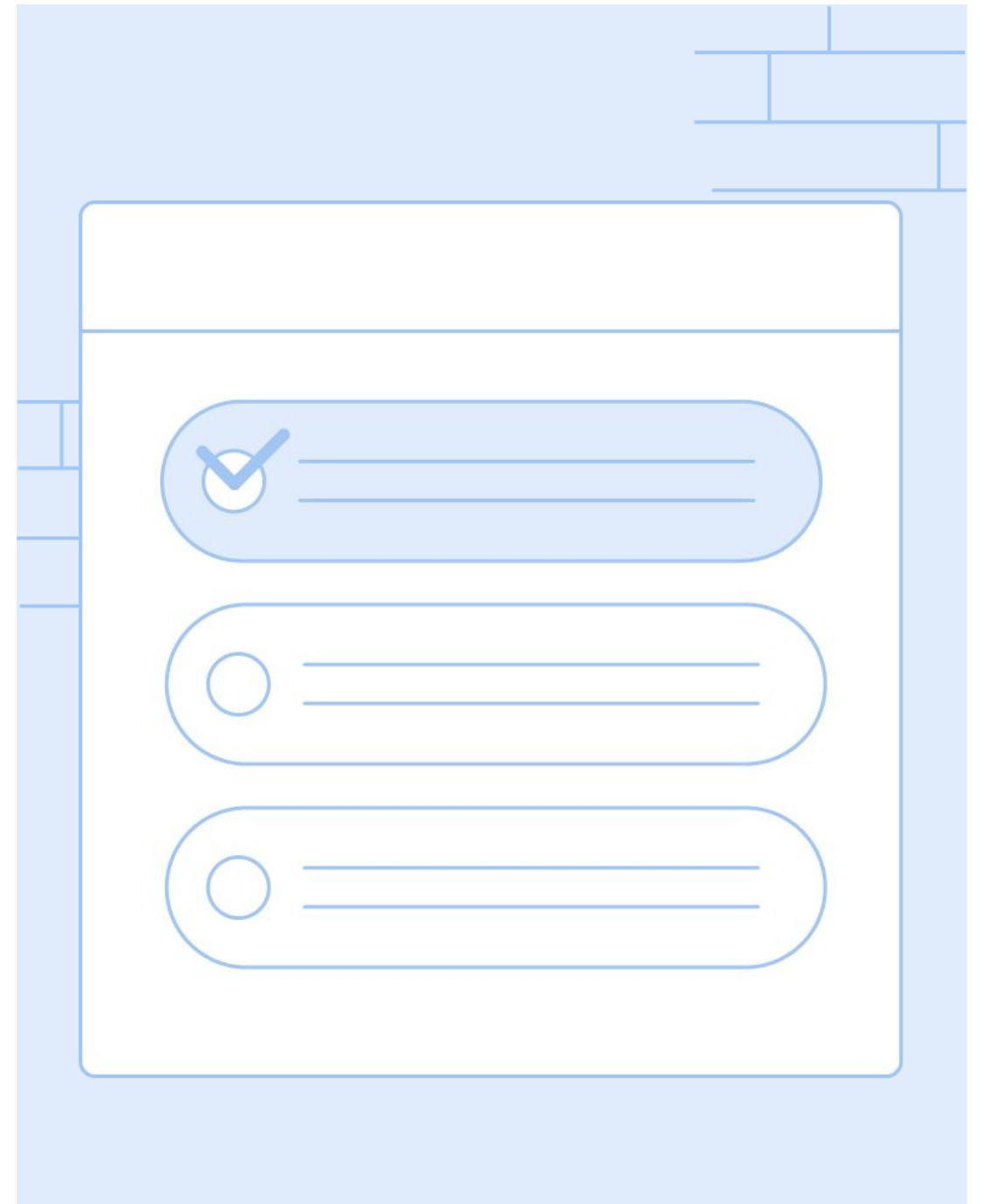
Copyright-free

 Healthy People 2030



What conditions or  
SDOH is your  
prevention work  
addressing?

Polling Question



The image shows a stylized graphic of a polling question interface. It features a white rounded rectangle on a light blue background. Inside the rectangle, there are three rounded rectangular options, each containing a radio button and two horizontal lines representing text. The top option has a blue checkmark inside its radio button, while the other two have empty radio buttons.

# Kansas

## COMPREHENSIVE PLAN TO PREVENT SEXUAL AND DOMESTIC VIOLENCE

### Reweaving Our Social Fabric



### Purpose of This Plan



In 2011, The Kansas Coalition Against Sexual and Domestic Violence (KCS DV), the Kansas Department of Health and Environment (KDHE), and the Kansas Sexual and Domestic Violence Primary Prevention Advisory Committee presented *Reweaving Our Social Fabric: A Plan for the Primary Prevention of Sexual and Domestic Violence in Kansas*. In March of 2019, the Kansas Sexual and Domestic

Violence Primary Prevention Advisory Committee was called together to review progress made since 2011 and update the State Plan. We are pleased to provide this updated *Reweaving the Social Fabric: A Plan for the Primary Prevention of Sexual and Domestic Violence in Kansas, 2019-2024*.

This Plan is the result of the efforts of many dedicated and talented people across Kansas who are committed to preventing sexual and domestic violence and addressing risk factors associated with sexual and domestic violence perpetration and victimization, while building up the protective factors for sexual and domestic violence.

This Plan offers our state and communities a path forward in efforts to prevent sexual and domestic violence by providing a framework based on current best practices, data, evaluation, and participatory action research findings from around the state. Because the causes and supports for sexual and domestic violence are deeply embedded within our society, preventing it will require participation at all levels of society: individual change, change in the way we relate to one another, change in our community structures and change in our social norms.

#### Vision

All people in Kansas will have safe and healthy lives and communities free of sexual and domestic violence.

#### Mission

To prevent and end sexual and domestic violence through education, collaboration, and action for all people and communities throughout Kansas.

# kansas

REWEAVING OUR SOCIAL FABRIC

Goal 1: Decrease social norms that lead to oppression, including male superiority and sexual entitlement

# kansas

REWEAVING OUR SOCIAL FABRIC

Goal 2: Increase equity for people who experience gender-based oppression



# kansas

REWEAVING OUR SOCIAL FABRIC

Goal 3: Decrease unequal burden of risk factors for sexual and domestic violence

# kansas

REWEAVING OUR SOCIAL FABRIC

Goal 4: Increase efforts at the individual, relationship, community, and societal levels to prevent sexual and domestic violence before it occurs.

# kansas

REWEAVING OUR SOCIAL FABRIC

Goal 5: Increase the capacity to monitor, evaluate, and improve primary prevention in a data-driven and evidence-based manner

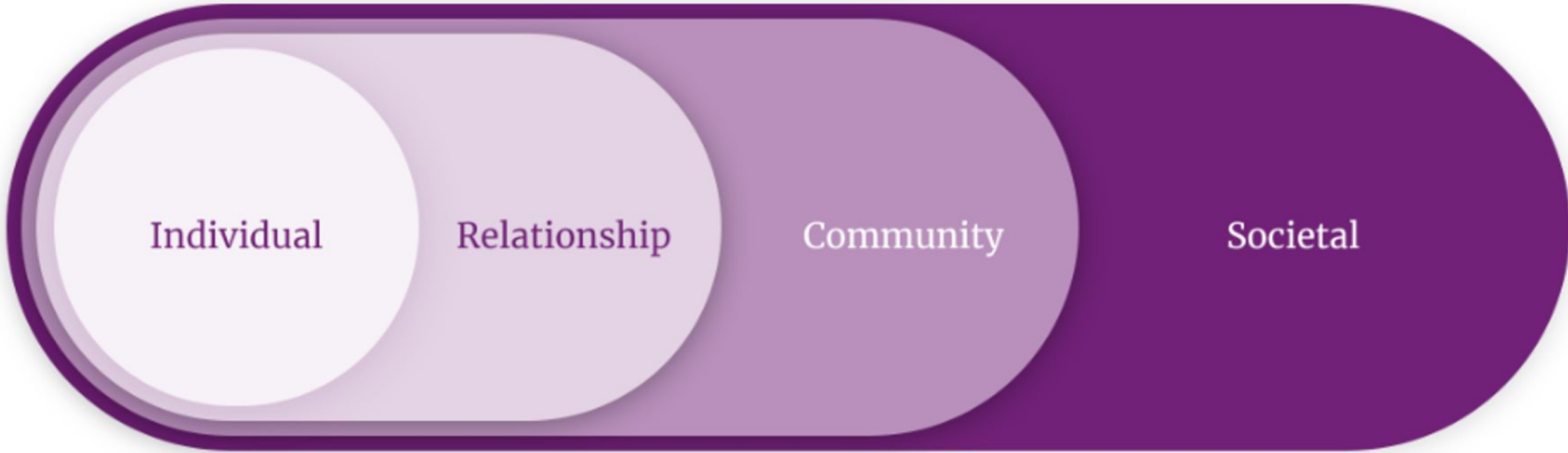
# kansas

REWEAVING OUR SOCIAL FABRIC

Goal 6: Obtain resources to address prevention of sexual and domestic violence



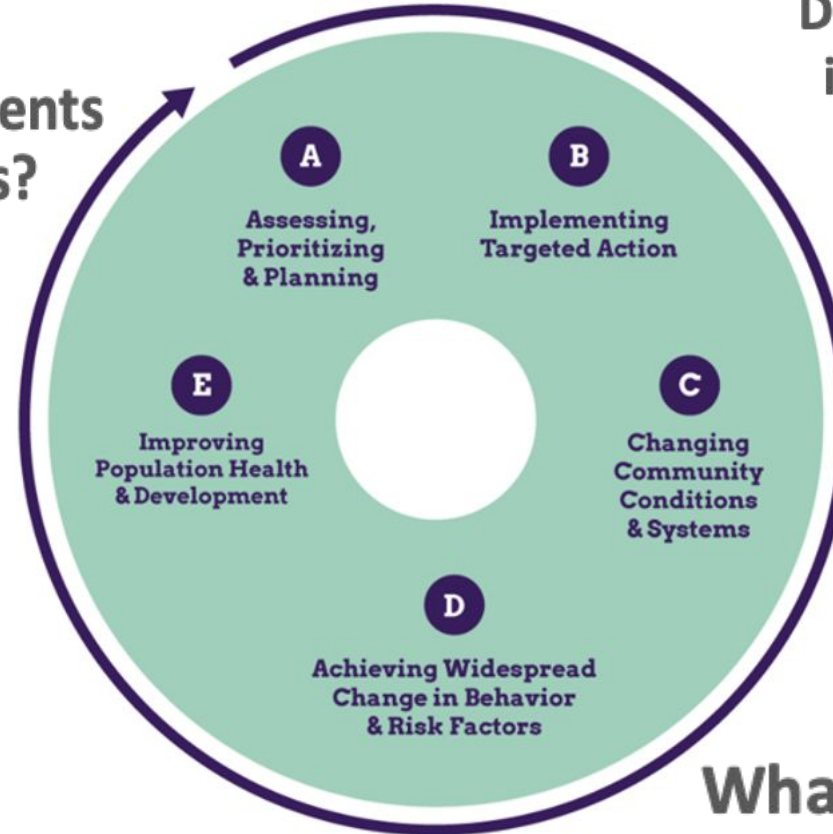
# CDC's Social Ecological Model





# Asking questions of our initiative

Are there associated improvements in population-level outcomes?



Did those most affected participate in planning and implementation?

Are there changes in communities and systems?

What factors are associated with increased rates of change?

How are community and systems changes contributing to changes in behavior and risk factors?

<http://communityhealth.ku.edu> | Copyright © 2023 | The University of Kansas

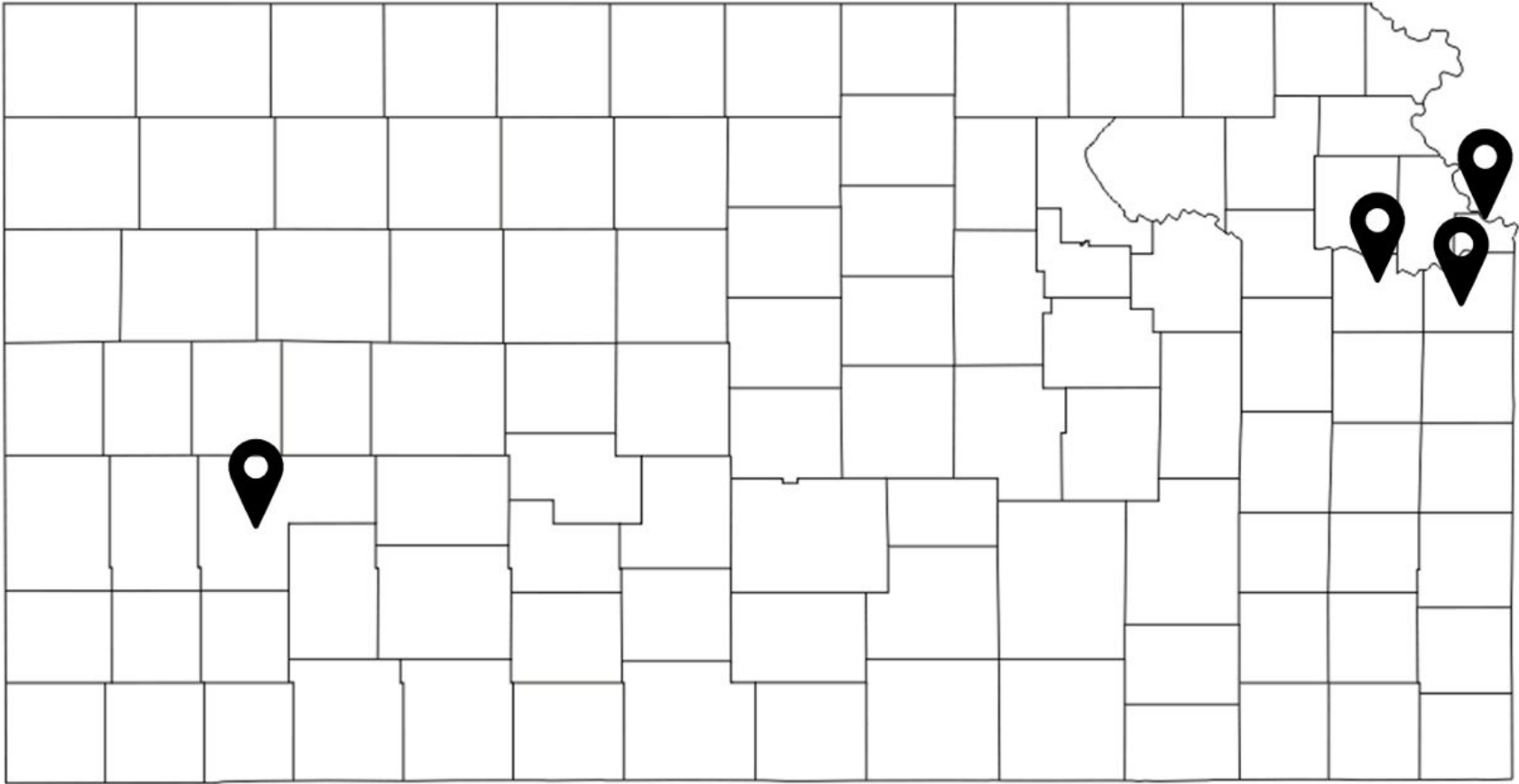




COMMUNITY CHECK BOX  
EVALUATION SYSTEM

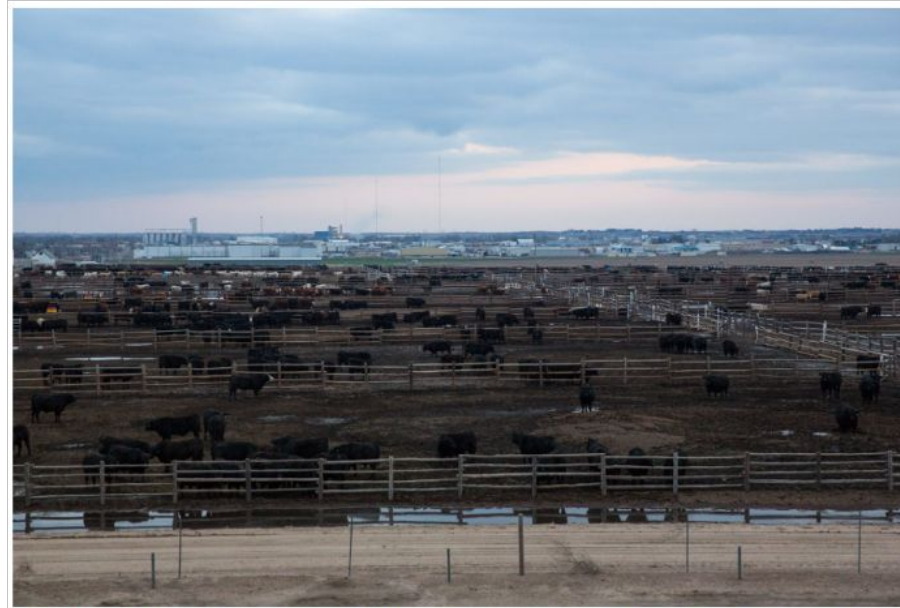


# Kansas RPE Grantee Communities





Community health worker Ifrah Farah and Birgit Lemke make phone calls for Somali refugees Koos Husen (in yellow) and Asli Muhamud (in red) at LiveWell Finney County Neighborhood Learning Center in Garden City, Kansas. LiveWell helps refugees and immigrants with health care, housing, and job applications and offers classes in English, nutrition and other life skills. *Photo courtesy of the Robert Wood Johnson Foundation. (c) Annabel Clark 2019 and (c) Josh Kohanek 2019.*



Cows at the Brookover Feed Yard in Garden City, Kansas. *Photo courtesy of the Robert Wood Johnson Foundation. (c) Annabel Clark 2019 and (c) Josh Kohanek 2019.*



Sister Janice Thome and Tina Kinney attend the Community Services Council Meeting at the Finney County Extension Office in Garden City, Kansas. The monthly meetings bring together community groups to share updates. The meetings are chaired by Tina Kinney of Kansas Workforce, which connects local employers to a motivated workforce having skills to obtain and maintain meaningful employment. *Photo courtesy of the Robert Wood Johnson Foundation. (c) Annabel Clark 2019 and (c) Josh Kohanek 2019.*

# Finney County, Kansas





# Lawrence, Kansas





# Lawrence, Kansas Housing Inequity

- Slightly over 50% of homes are renter-occupied
- Median rent is \$1,105 for 2-bedroom
- 56% of renters are cost burdened (paying 1/3 or more of their income towards rent)





# Lawrence, Kansas Housing Inequity

- In September 2021, ~800 active Housing Choice Voucher users with a wait list of over 400 people at 1.5-2 years
- From April 2021-August 2022, over 1050 households received rental assistance





# Lawrence, Kansas Housing Inequity

- Emergency sheltering needs exceed available services
- Impact vs effort—what is going to make the most impact vs what can we realistically achieve



# Source of income protection precedents

- Adding source of income to protected classes under a city's discrimination code means that landlords cannot deny someone tenancy on the basis of how they're paying rent.
- 20 states and over 100 municipalities have passed source of income protections, with the oldest protections being created in Massachusetts in 1971. However, only 1 in 3 voucher users are protected by SOI protections.
- Recommended as a strategy to increase housing mobility and voucher acceptance by HUD, ABA, and many housing advocacy groups.

# Source of income protections outcomes

- Time spent by voucher holders waiting for housing decrease 14% in communities with these protections.
- There is no evidence of a relationship between source of income protections and rising rents.
- In communities without SOI protections, 77% of prospective HCV tenants were rejected by landlords. This number drops to 33% in communities with SOI protections.
- Communities with SOI protections were less racially segregated
- Housing mobility outcomes improved for elderly HCV recipients and those with large families



# Other Strategies

- SafeBar Alliance curriculum revised to include social norms and power dynamics
- Tenant Experience Survey launched
- Materially supporting community organizers when possible

The infographic features a circular logo for the SafeBar Alliance, which is a program by The Sexual Trauma & Abuse Care Center. The main title 'Fast Facts' is displayed in a large, stylized font. Four speech bubbles contain key statistics and program details:

- Green bubble:** 14 Lawrence bars, restaurants, and venues have received SafeBar Alliance trainings in the last year. That's over 200 people who've got your back-- and counting!
- Orange bubble:** SafeBar Alliance's bystander intervention and social norms approach is proven to work! (See Campbell Systematic Reviews for data.)
- Yellow bubble:** The Care Center can help other communities wanting to start their own SafeBar Alliance programs. Since 2010, we have supported the launch of more than 20 programs nationwide!
- Blue bubble:** No two SafeBar Alliance establishments are the same, and neither are our trainings! Our curriculum is tailored specifically to address each bar's unique needs.

What environmental conditions, policies, programs, or practices might your community address to reduce inequities?

Text Chat Question

▼ Chat

From Me to **Everyone**:

Use this text chat box to respond to our questions, ask your own, and connect with others!

To: **Everyone** ▼

Type message here...



# Johnson County, Kansas



**Kansas Children's Service League**  
Stronger families start here.





# Wyandotte, Kansas



Wyandotte County  
Sexual Assault Prevention  
Coalition



## Violence Prevention

Promote community connectedness, resident supports and cultural norms that reduce violence

### GOALS

- Increase the perception of **community connectedness** by Wyandotte County youth from 56.5% to 58.4%
- Increase **resident satisfaction** with law enforcement, first responders, & the judicial system from 3.4 to 3.6 out of 5 on the annual WyCo resident satisfaction survey

### STRATEGIES



#### Youth Engagement

- Support **youth-led community advisory boards** to engage youth in community development and prevention strategies



#### Community & Justice Systems Relations

- Evaluate and improve **communication and relations** between community and the justice system



#### Norms Change

- Develop a **positive norms change campaign** to acknowledge gun violence and sexual violence among youth in Wyandotte County



### STRATEGIES



#### Crime Prevention Through Environmental Design

- Coordinate efforts among residents, community organizations, and Unified Government (UG) agencies to implement **Crime Prevention Through Environmental Design (CPTED)** strategies, through trauma-informed and equity-based approaches
- **Reduce and prevent violence** by fostering community connectedness through place-based strategies to create inclusive, safe, and beautiful public spaces





# COMMUNITY TOOL BOX



**TOOLS**  
TO CHANGE OUR  
**WORLD**

  [ctb.ku.edu](http://ctb.ku.edu)







Carrying forward the work

What next steps do you envision?



# Thank you!

We welcome you to reach out with questions.

**Belinda Flores**, LMSW, KDHE  
Program Manager, Sexual Violence  
Prevention and Education;  
[belinda.flores@ks.gov](mailto:belinda.flores@ks.gov)

**Christina Holt**, MA, University of  
Kansas; [cholt@ku.edu](mailto:cholt@ku.edu)

**Gabby Boyle**, Sexual Trauma & Abuse  
Care Center;  
[gabby@stacarecenter.org](mailto:gabby@stacarecenter.org)





prevent  
connect

[PreventConnect.org](http://PreventConnect.org)

[info@PreventConnect.org](mailto:info@PreventConnect.org)

[PreventConnect.org/email](http://PreventConnect.org/email) – email group

[Learn.PreventConnect.org](http://Learn.PreventConnect.org) – eLearning

### **Follow Us**

[twitter.com/PreventConnect](https://twitter.com/PreventConnect)

[facebook.com/PreventConnect](https://facebook.com/PreventConnect)