

A 4-PART SERIES:

Integrating Health Equity into Sexual and Domestic Violence Prevention

Session 4:
Community &
Multi-Sector
Partnerships



Meet the PreventConnect Team



Ashleigh Klein-Jimenez

Director of Prevention

she/her/hers



Janae Sargent

Project Coordinator

she/they



prevent
connect

PreventConnect.org

info@PreventConnect.org

PreventConnect.org/email – email group

Learn.PreventConnect.org – eLearning

Follow Us

instagram.com/PreventConnect

linkedin.com/company/preventconnect

threads/preventconnect

twitter.com/PreventConnect

facebook.com/PreventConnect

Listen to our podcast!

EQUITY IN ACTION
NATIONAL SEXUAL ASSAULT CONFERENCE®
2023

Janae Sargent Leah Aldridge Marsela Rojas-salas

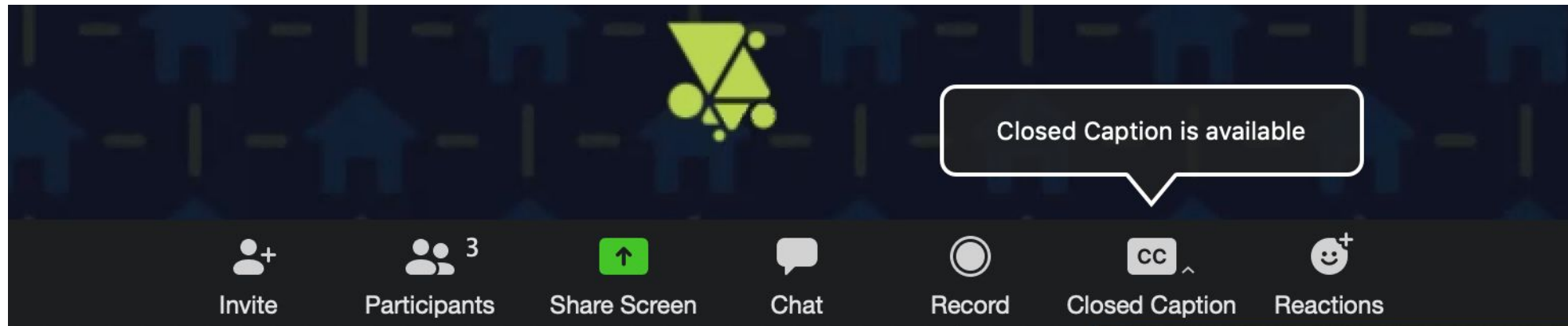
PODCAST **LIVE**

CHANGING THE NARRATIVE
THROUGH STORYTELLING

**prevent
connect**
A ValorUS® PROJECT

How to use Zoom

- ▶ Text chat
- ▶ PowerPoint Slides
- ▶ Polling Questions
- ▶ Phone
- ▶ Closed Captioning
- ▶ Web Conference Guidelines



What type of
organization are you
joining us from?

Polling Question

The image shows a stylized representation of a form or document. It features a light blue background with a white rectangular area in the center. Inside this white area, there are three rounded rectangular input fields. The top field is highlighted with a blue gradient and contains a blue checkmark icon, indicating it is the selected option. The other two fields are white with blue outlines and contain empty radio button icons. The background also features faint blue lines suggesting a grid or table structure.

A 4-PART SERIES:

Integrating Health Equity into Sexual and Domestic Violence Prevention

Session 4:
Community &
Multi-Sector
Partnerships



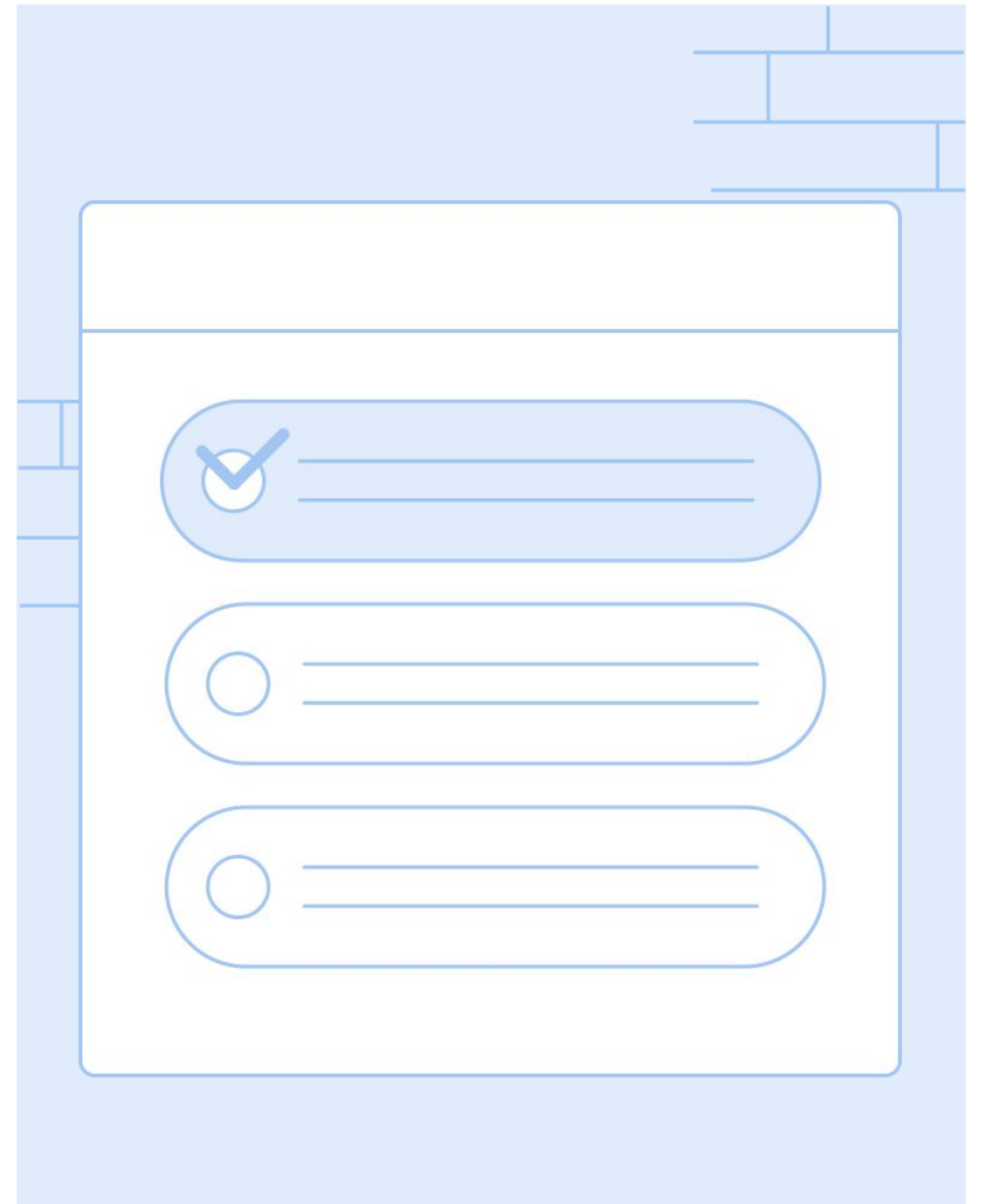
PreventConnect is a national project of ValorUS sponsored by the U.S. Centers for Disease Control and Prevention. The views and information provided in this web conference do not necessarily represent the official views of the U.S. government, CDC or VALOR.

Objectives

- Gain deeper understanding of health equity frameworks in sexual violence prevention.
- Translate concepts of health equity into practical on-the-ground program development and implementation.
- Create cross-cutting strategies and partnerships to address social determinants of health and prevent violence in local communities.

Did you attend
previous sessions in
this web conference
series?

Polling Question

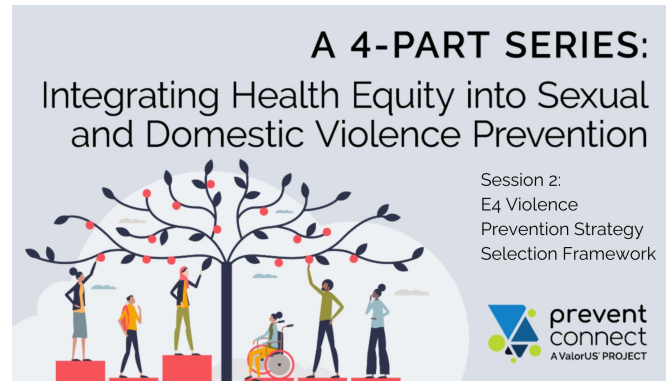


A stylized illustration of a white document with rounded corners and a light blue border, set against a light blue background with faint grid lines. The document contains three horizontal rounded rectangular boxes. The top box is filled with a light blue color and contains a white checkmark icon on the left, followed by two horizontal lines for text. The middle and bottom boxes are white and each contains a small white circle icon on the left, followed by two horizontal lines for text.

Sessions 1 -3 Recordings Available Now



<https://www.preventconnect.org/2023/09/integrating-health-equity-into-sexual-and-domestic-violence-prevention-key-concepts-and-components-of-strategies-and-approaches/>



<https://www.preventconnect.org/2023/10/integrating-health-equity-into-sexual-and-domestic-violence-prevention-e4-violence-prevention-strategy-selection-framework-session-2/>



<https://www.preventconnect.org/2023/10/26769/>

A Health Equity Approach to Violence Prevention



Create accessible access to power



To improve the structural and social conditions where people live, learn, work, play, etc.



To eliminate sexual and intimate partner violence in communities

Integrating Health Equity

Session 1: Content

- ▶ What are the key messages, design elements, and policy components of the strategy or approach?

Session 2: Implementation Process

- ▶ Assessing strategy and approach implementation using E4

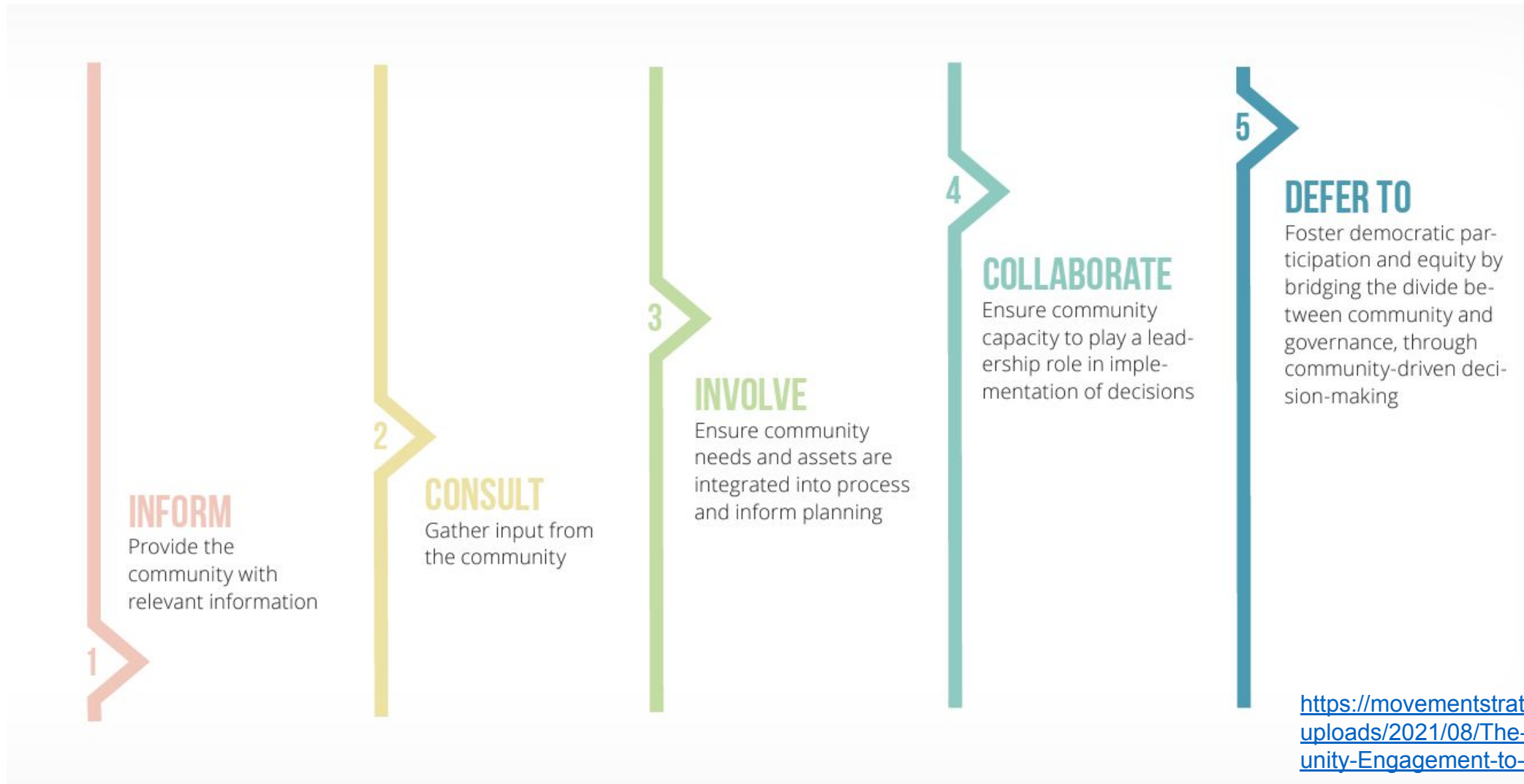
Session 3: Implementation Process continued

- ▶ What are the guiding principle of the strategy or approach? What implementation methods and processes are being used?

Session 4: Partners and leaders central to the success of the strategy/approach

- ▶ **What are the characteristics of partners? What is the relationship like?**

Spectrum of Community Engagement to Ownership

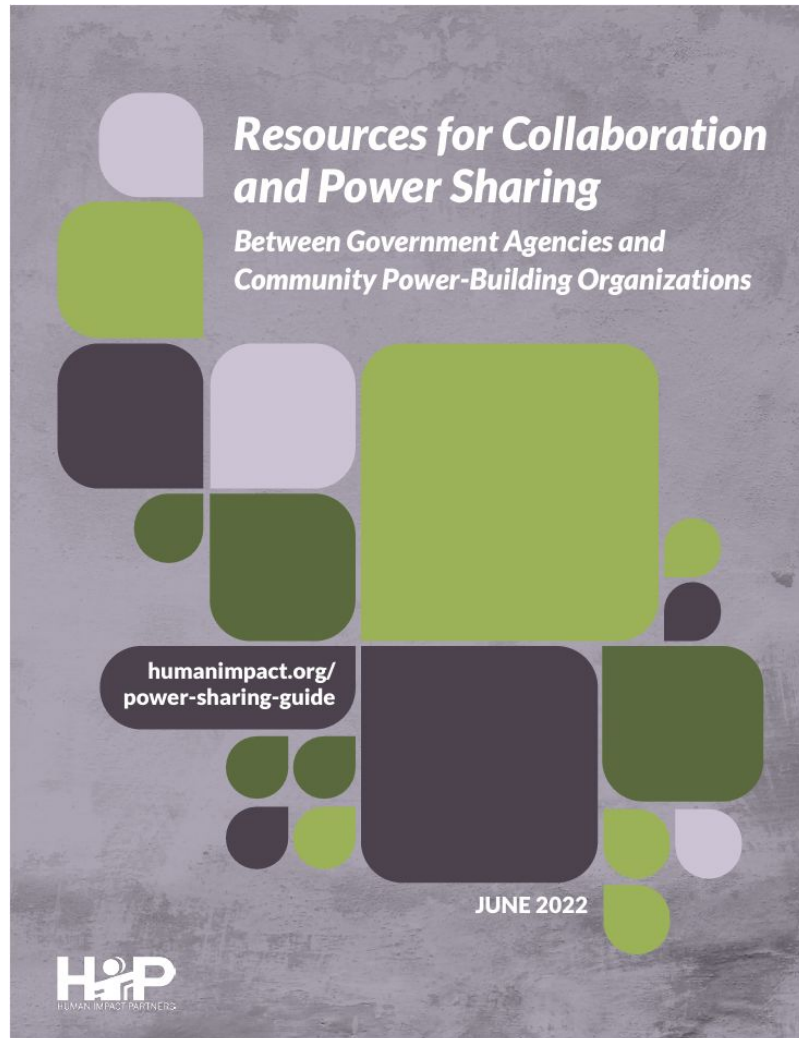


Where does your prevention
work currently fall on the
Spectrum of Community
Engagement to Ownership?

Polling Question

The illustration shows a white document with rounded corners on a light blue background. It features three horizontal rounded rectangular boxes. The top box has a blue checkmark icon on the left and two horizontal lines for text on the right. The middle and bottom boxes each have a small empty circle on the left and two horizontal lines for text on the right, indicating a list of options or a progress indicator.

Power Sharing



<https://humanimpact.org/wp-content/uploads/2022/06/HIP-Set1-Resources-for-Collaboration-and-Power-Sharing.pdf>

Meet Today's Guests



Angela Kemp
she/her
**Rhode Island
Department of Health**



Ryan Fontaine
she/her
**Thundermist
Health Center**

Jaye Watts
he/him
**Thundermist
Health Center**

Andy Taubman
she/they
Youth Pride Inc.



Investing in Community Leadership in Rhode Island Rape Prevention Education

October 18th, 2023

Prevent Connect Web Conference

State of Rhode Island



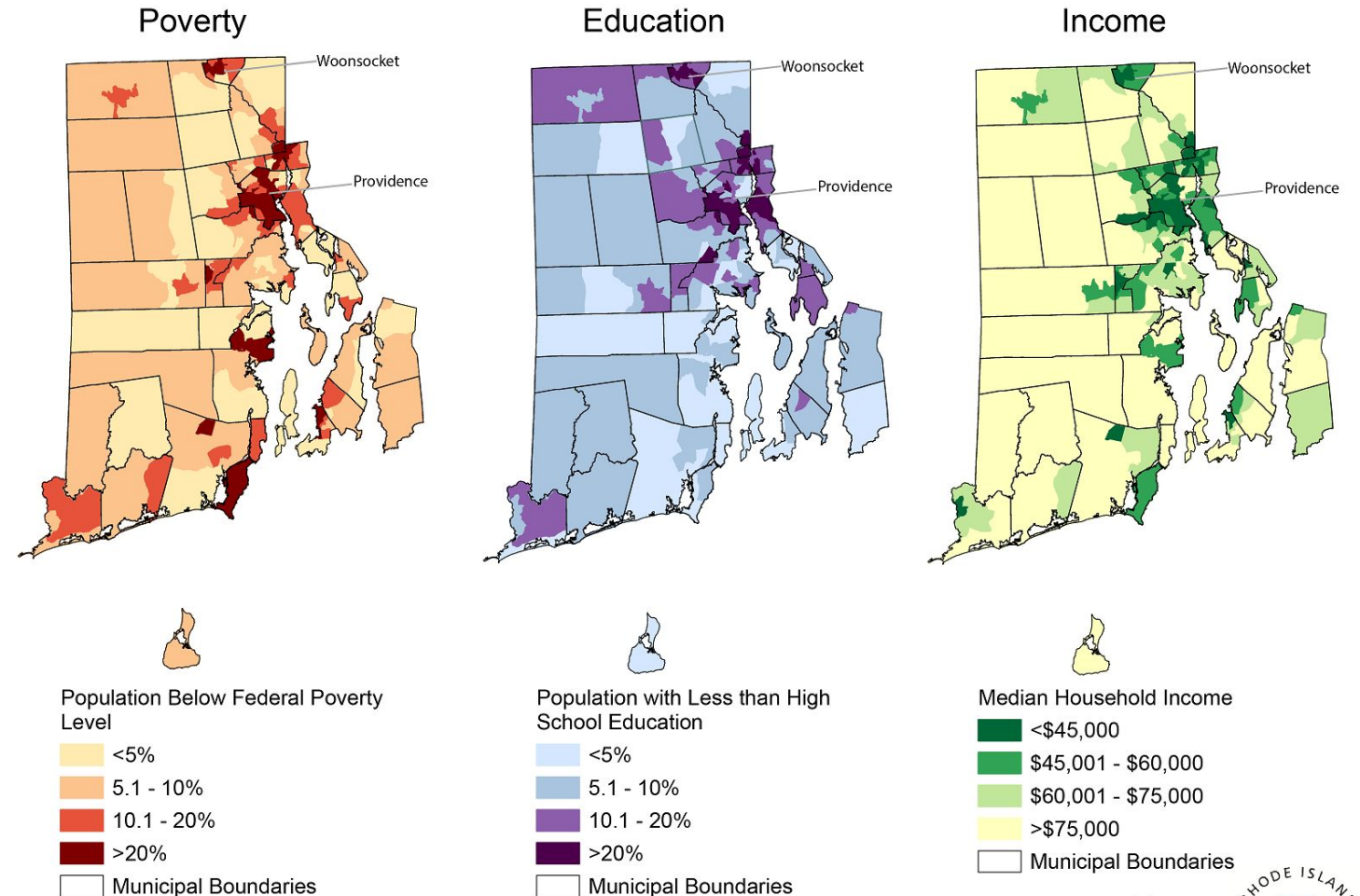
Population: 1.096 million

Coastline: 400 miles

Urban Core: Providence, Pawtucket, Central Falls, Woonsocket & Newport



Comparing Social Correlates of Health by Census Tract, Rhode Island, 2017



Source: American Community Survey, Five-year estimate, 2013-2017, US Census Bureau
All maps use a manual classification scheme. (n=244)

0 5 10 20 Miles



Sources: RI.gov; US Census Bureau

Rhode Island Rape Prevention Education Program



Division of Community Health and Equity

- Violence & Injury Prevention Program
- Funded 2019-2024 Supplemental Category B
- Collaboration with RI Health Equity Zone Initiatives
 - Newport – Women’s Resource Center
 - Woonsocket & W. Warwick - Thundermist

Rhode Island RPE Program



Community Mobilization

RI Sexual Violence Prevention Coalition

RI Cross Campus Learning Collaborative

Trans Action Coalition

Collective of Phenomenal Women

Women, Youth & Gender Expansive Leadership Development

Project Success

Girls Circle

Young Voices

Peer Educator/Advocate Trainings

Creating Protective Environments

Thundermist Community Empowerment Events

K-12 Educator Resource Guide

RPE Retrospective Evaluation



Conducted virtual interviews with stakeholders at 7 RPE sub-recipient organizations

- RPE Coordinator and Evaluator conducted theme analysis of interviews to capture potential community-level outcomes and lessons learned
- Identified themes important to RPE planning and implementation

Importance of adult allies in youth/young adult empowerment

- Not prescriptive – participants lead the work
- Value of professional development opportunities

The value of sustained funding for community organizing

- Building advocates/activists as agents of change
- Competitive funding initiated a change in programmatic work towards community organizing and connected existing efforts to funding and resources
- Community organizing has the power to break down structural barriers
- Being responsive to community needs

RPE Lessons/Themes (2/3)



Our work is more effective when we build prevention networks

- Bridges gaps in capacity
- Humanizes the work & builds sense of belonging and connection
- Strengthening networks during time of increased isolation

Community has the responsibility to own sexual violence prevention

- Need to meet people where they are at
- Widening the public's perception of the scope of prevention
- Sustainability via community activation
- Planting seeds for prevention

It is essential that our prevention work be trauma-informed

- Prevention does not happen in isolation, and often happens simultaneously with response
- Foundation of trust
- Creating brave spaces for disenfranchised voices
- Beyond traditional approaches, need to be vulnerable and authentic
- This work takes **TIME**
- Need to show up consistently for community
- Make space to celebrate in the context of community



Angela Kemp

RPE Coordinator


Division of Community Health and Equity

Rhode Island Department of Health

Angela.kemp@health.ri.gov

What culture shift and
system changes are
needed for authentic
collaboration between
institutions and impacted
communities?

Text Chat Question

 Chat

From Me to **Everyone**:

Use this text chat box to respond to our questions, ask your own, and connect with others!

To: **Everyone** ▼

Type message here...



prevent
connect

PreventConnect.org

info@PreventConnect.org

PreventConnect.org/email – email group

Learn.PreventConnect.org – eLearning

Follow Us

twitter.com/PreventConnect

facebook.com/PreventConnect